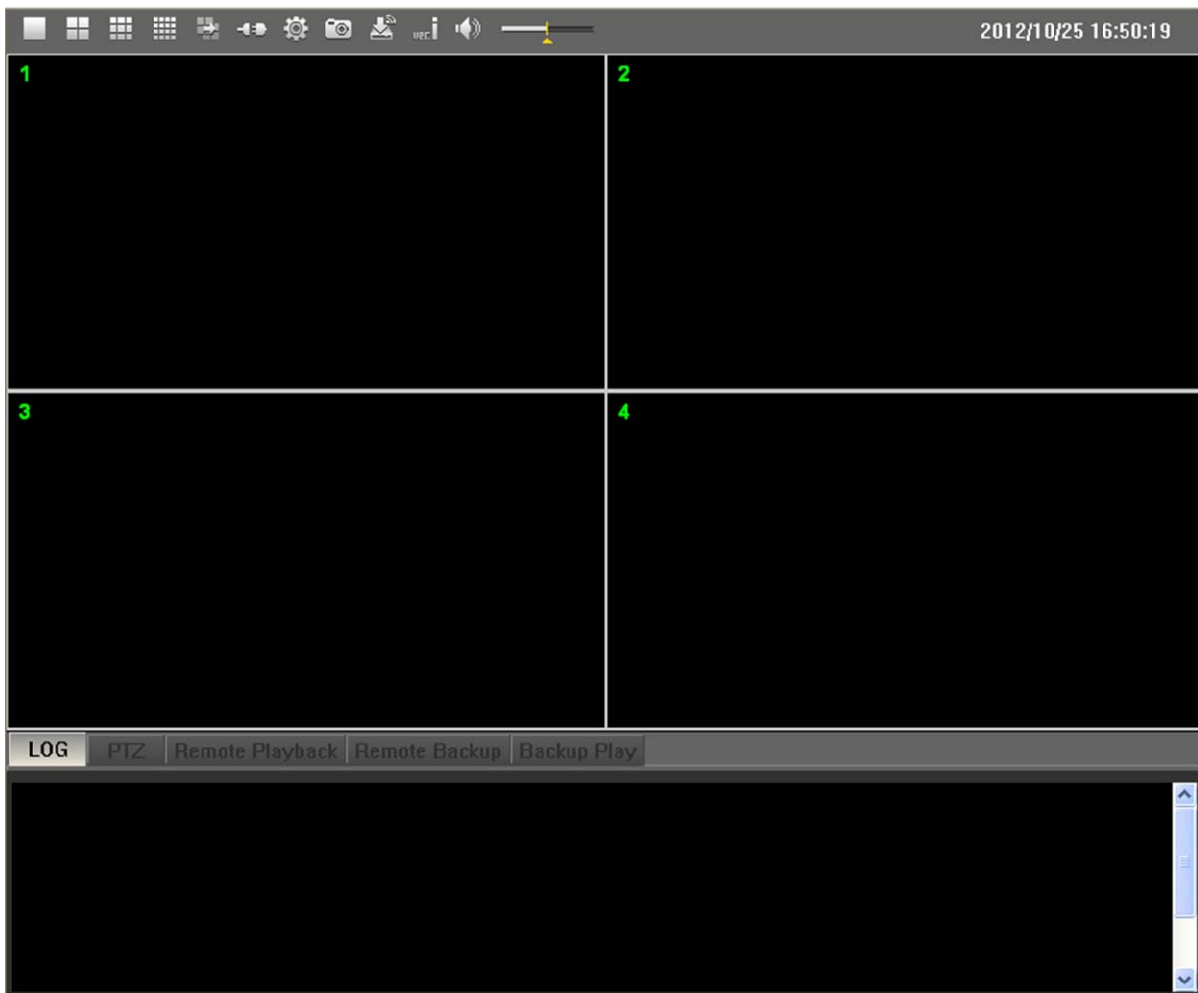


Web viewer

Users Guide



1.1. General

- Web viewer HD was designed to provide network surveillance of HD SDI DVR & HD NVR using Internet explorer. Connecting via IE, built-in web viewer software is downloaded with active X.

This program provides live monitoring (with 1 DVR connection), remote playback, remote setup, remote backup, capture function and more.

■ Main features

- Up to 16 channels live monitoring with 1 DVR connection
- Remote playback with calendar & time bar
- Various screen divisions support (1, 4, 9, 16ch divisions)
- Full remote setup including remote S/W upgrade
- Remote backup & backup file playback
- Capturing & PTZ control

■ System requirements for PC

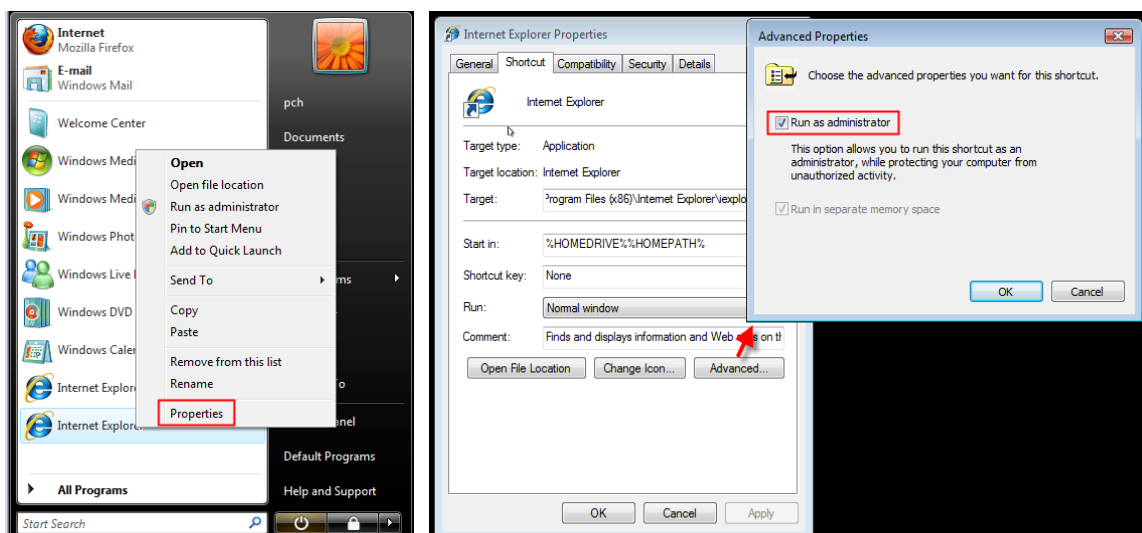
- OS (Operating system) : Windows XP, Vista, Windows 7
- CPU : Dual core or higher
- RAM : 2GB or higher memory recommended
- VGA : 128MB or higher

■ For operators that use windows VISTA or windows 7.

- In order to fully use web-viewer, IE must be run as administrator.
- If it is not run as administrator, web-viewer cannot conduct remote backup, snapshot image saving.

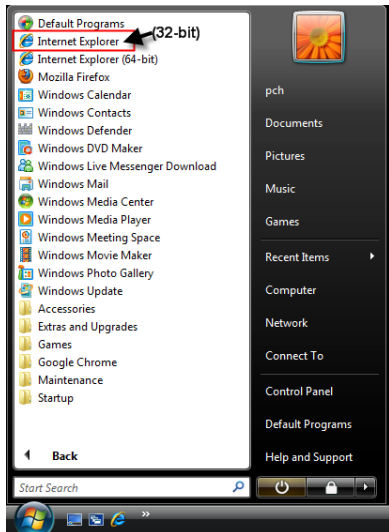
❖ START >> INTERNET EXPLORER >> Mouse right click >> Properties >> Shortcut >>

Advanced



- Regarding use of 64 bit OS (Windows VISTA, windows 7)

Web-viewer was designed only with 32 bit OS. In order to use web-viewer in 64 bit OS, operators need to install 32 bit version of IE additionally and run web-viewer in 32 bit version.

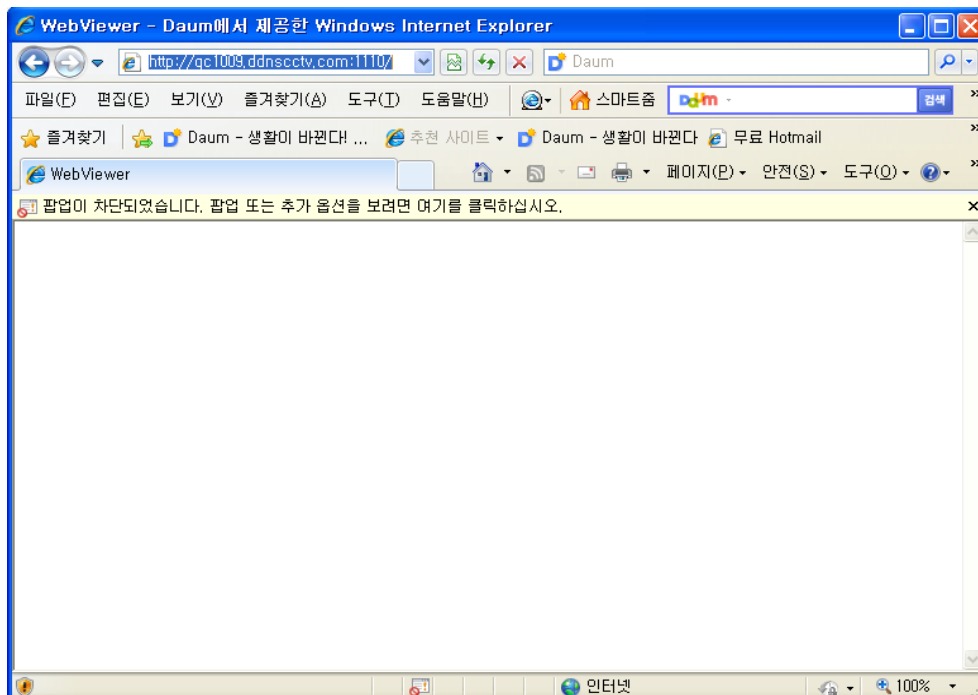


1.2. DVR connect

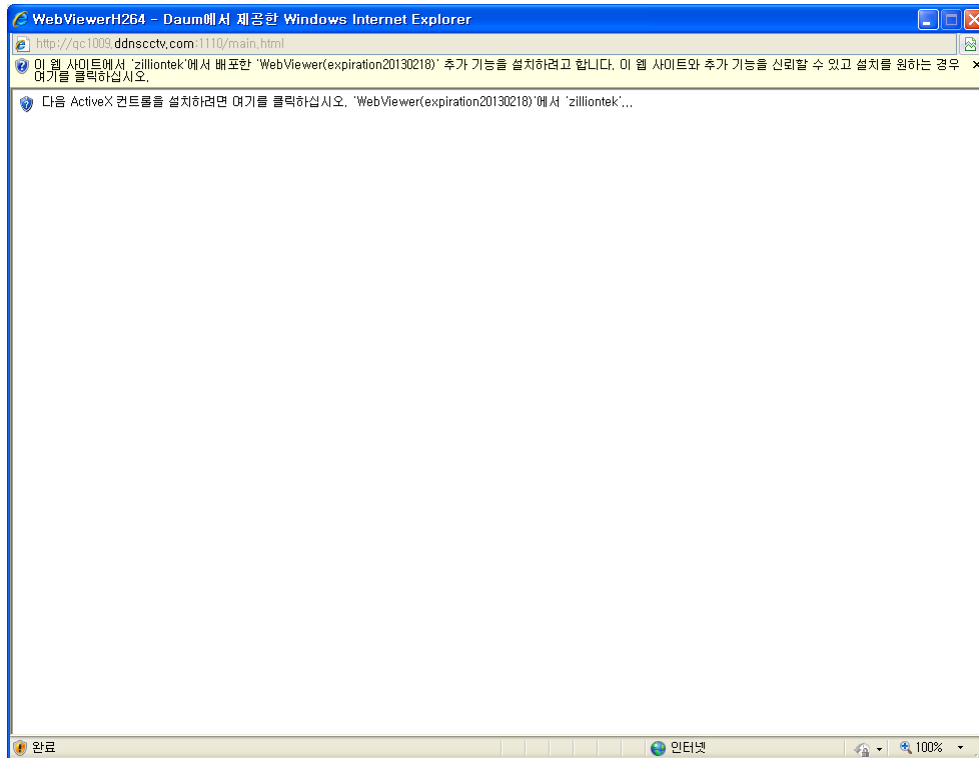
- Input DVR's IP or domain name on IE (Internet Explorer)

(Example: <http://192.168.1.152> or <http://dvra.ddnsctv.com:1005>)

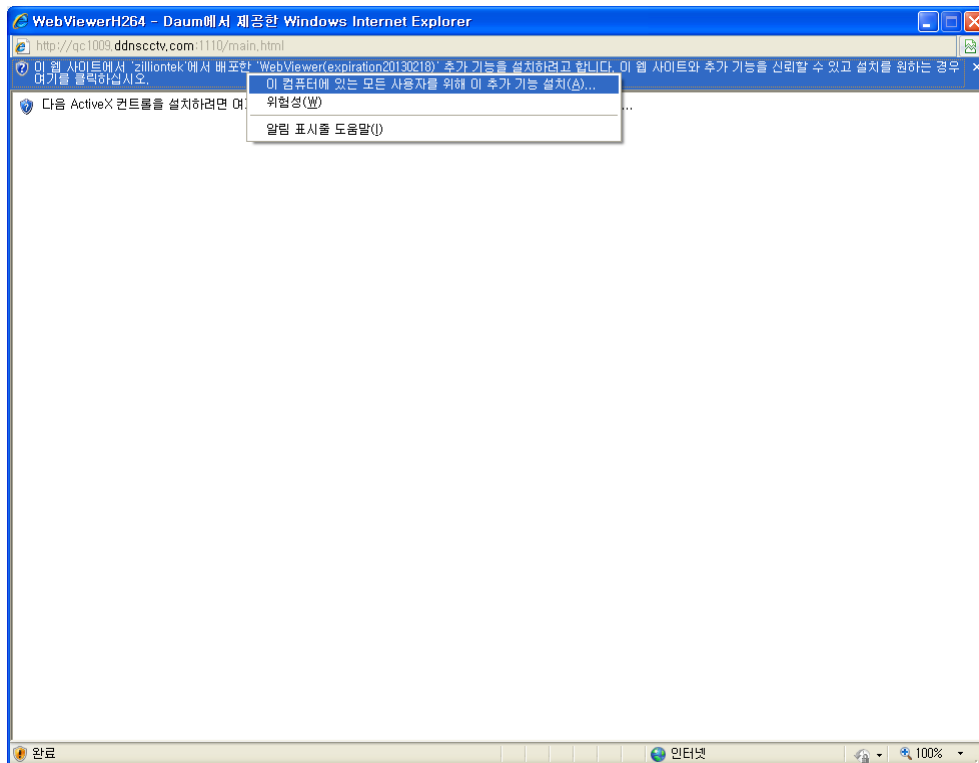
1005 means web port. You can check in DVR menu. MENU > SYSTEM > NETWORK > CLIENT)



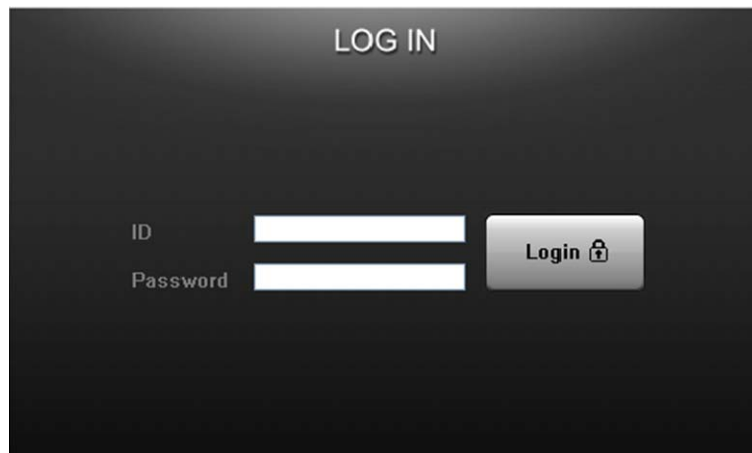
- Unblock the pop-up and web viewer shows up. Then, install Active X control.



- Click installation of Active X control and it will take a few seconds to tens of seconds depending on network bandwidth to install active X control.



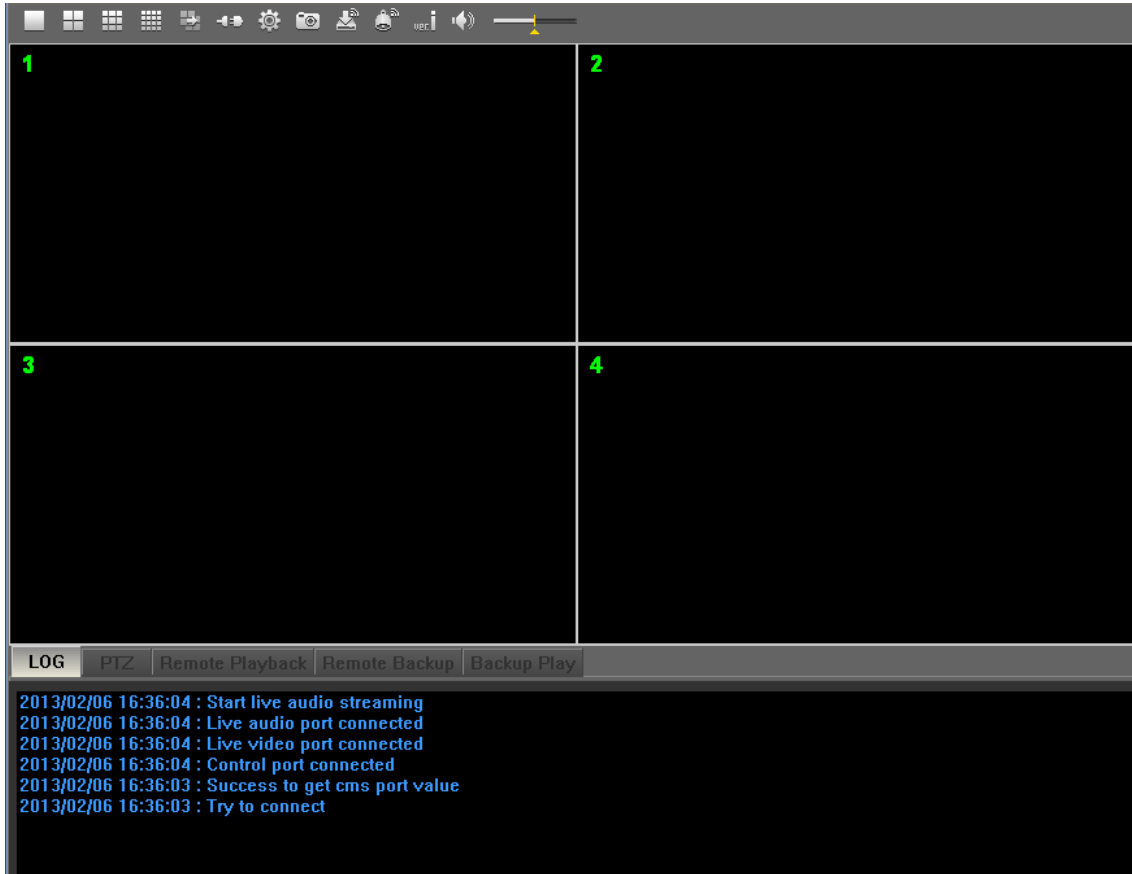
- Once the installation of active X has been completed, LOG IN shows up. Input DVR's ID & password and click "Login" button.



The image shows a dark-themed login window titled "LOG IN". It contains two input fields: "ID" and "Password", both of which are currently empty. To the right of these fields is a "Login" button with a lock icon.

1.3. How to use web viewer


1.3.1. Live




1.3.1.1. Icons




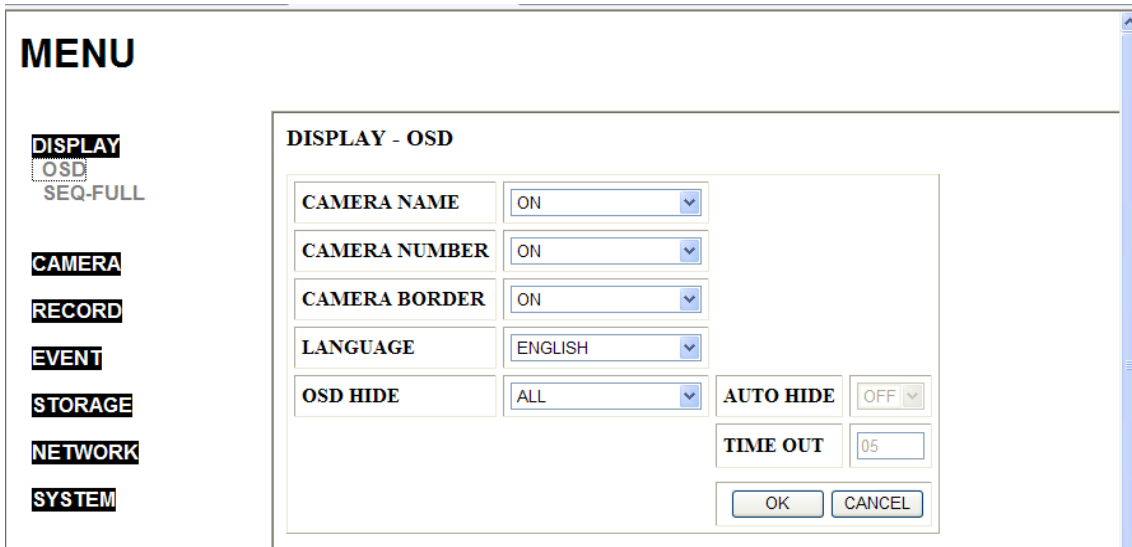
① Screen split mode: 1ch/4ch/9ch/16ch screen split & move to next screen

*When you monitor CH1~CH4 in 4ch split from 16ch DVR, screen moves to CH5~CH8 clicking 




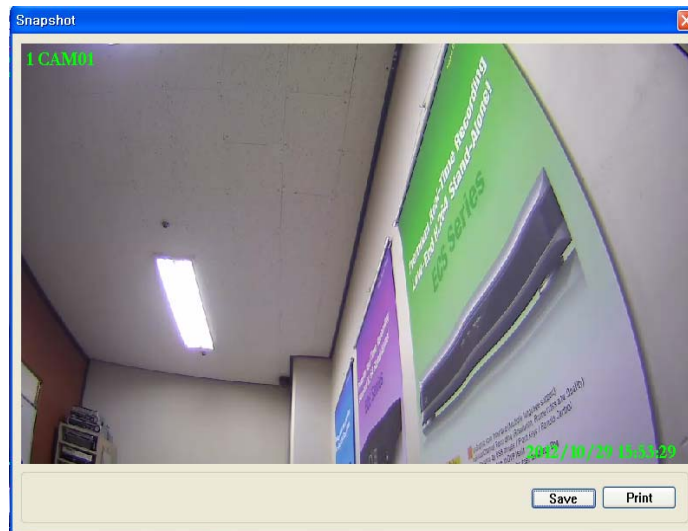
② Connect & disconnect: This icon  indicates connection status and makes operators manually connect or disconnect to remote DVR.

③ Remote setup: Click this icon  then a separate web page will be open for remote setup of DVR.

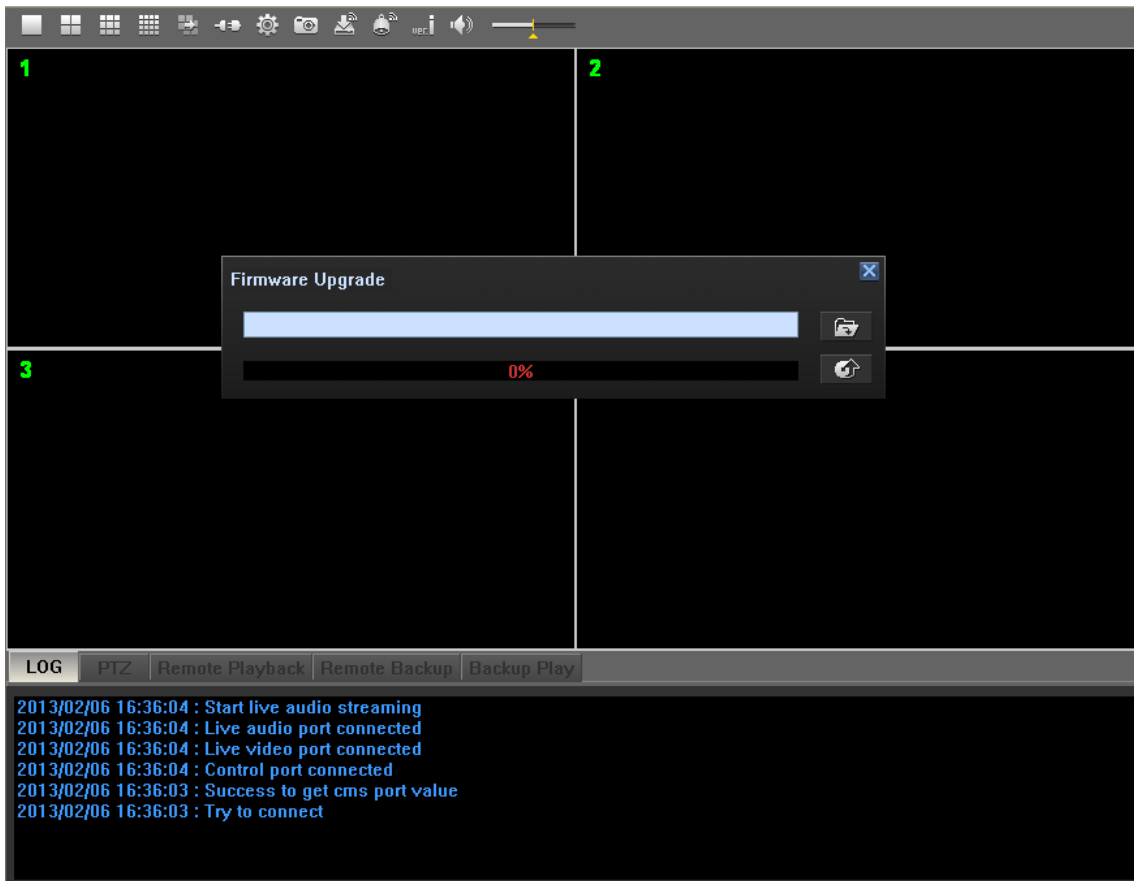


Except setting IP address or web/client ports, every setup of DVR can be made or modified in this page.

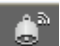
- ④ Capture: You can capture image in live mode & remote playback mode. Capture can be done only by channel so click the channel first before you click this button 



- ⑤ Remote S/W upgrade: Click this icon  in order to upgrade DVR firmware. Make sure firmware file is the form of *.tar.gz on your PC and designate the path for the file clicking this icon 



⑥ Remote alarm control: Alarm out port no. 1 of DVR can be controlled.

Using  icon, alarm out port no. 1 will be ON/OFF

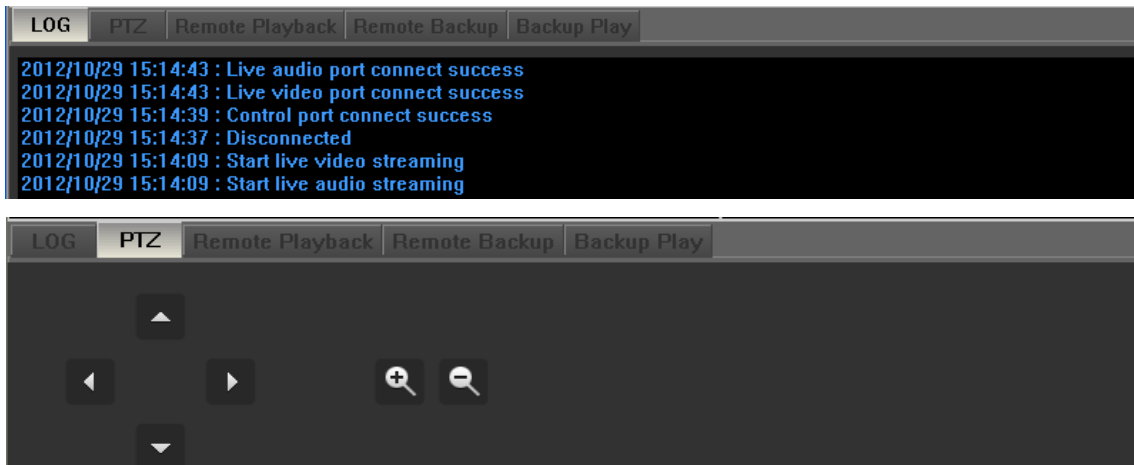
⑦ Version information : This icon  shows you version of web viewer

⑧ Audio control : This icons  are audio mute and volume control

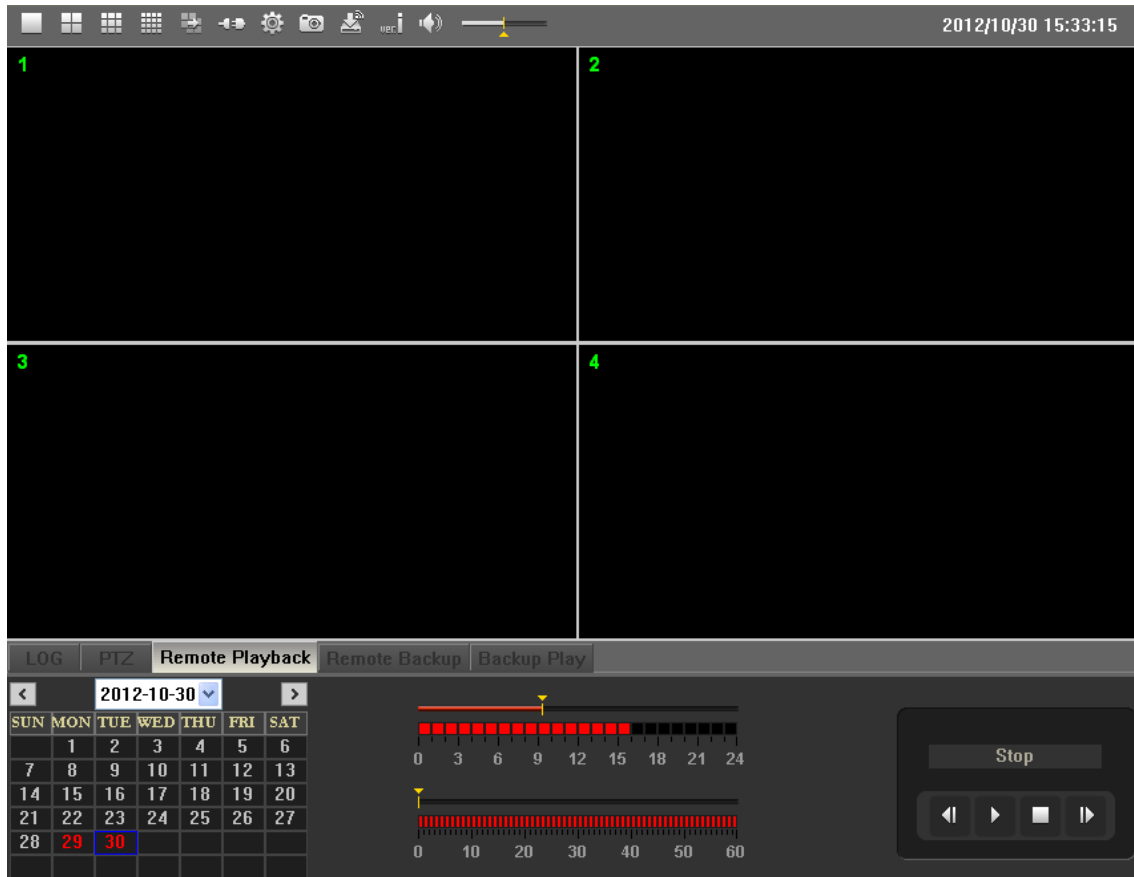
1.3.1.2. LOG & PTZ control

Real time logs are indicated at the bottom of live screen and Pan/tilt/zoom control can be made.

PTZ control only works in 1ch screen split which PTZ camera is connected to.



1.3.2. Remote Playback



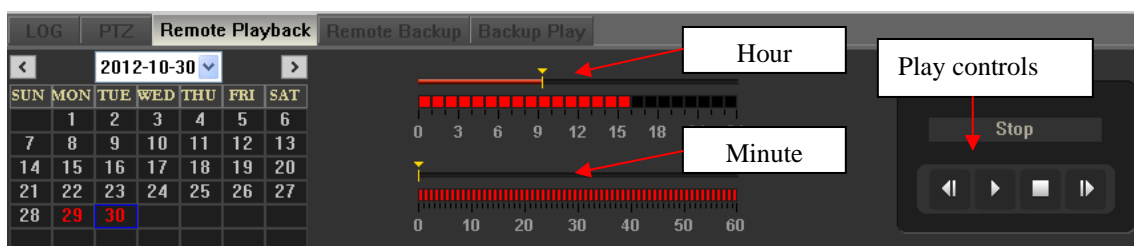
Once you get to “Remote Playback” mode, calendar, time bar & play control buttons are shown at the bottom of screen. On calendar, days with recording are indicated in red color and on time bar as well.

To view recorded video, please follow the steps below,

Step 1 Select day

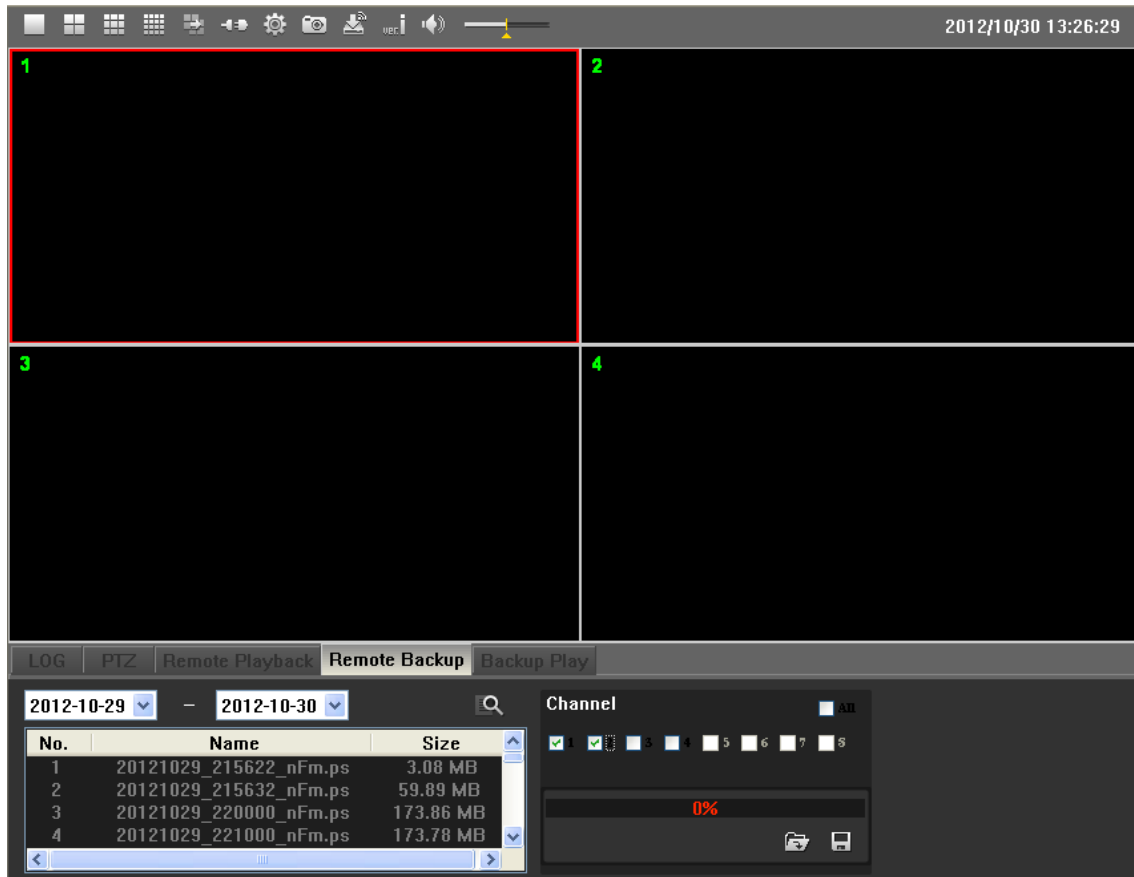
Step 2 Adjust hour & minute

Step 3 Select “play” button



- You can click specific hour/minute on time bar or drag to specific hour/minute. Then you must click “Play” button to view playback.
- While viewing playback, you can move to another time by moving the bar on hour/minute.
- Fast-forward, Rewind speed x1, x2, x4 & x8

1.3.3. Remote backup



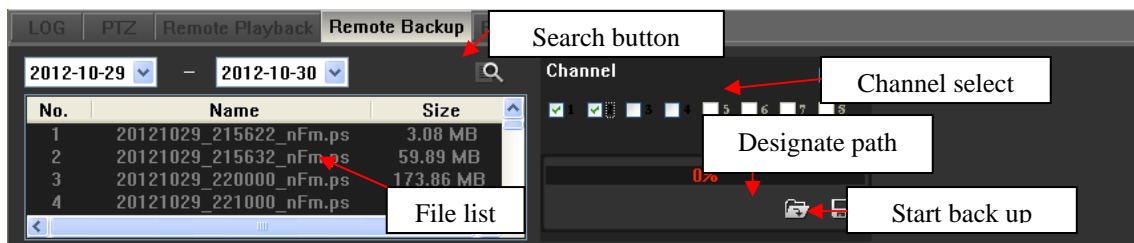
You can archive the recording remotely in this menu. Backup file list is indicated according to selected days and only PS type of files can be archived.

To archive recordings remotely from DVR, please follow the steps below,

Step 1 Select day and click search button to see backup file list.

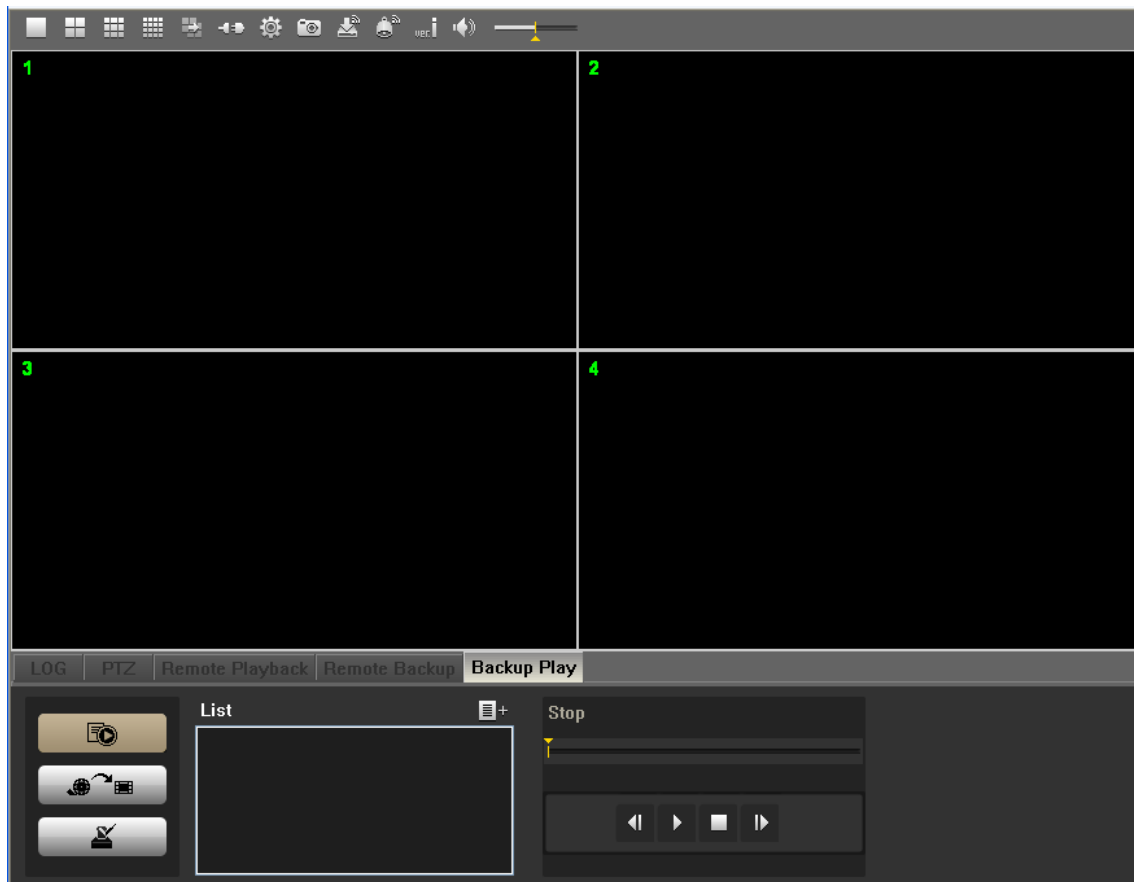
Step 2 Designate the path for backup and click backup button

Step 3 Select file lists and check channels for backup then start backup



- 1 file list is 10 minutes of recording data. The name of file list is made based on the time of recording file. EX> 20121029_215000_nFm.ps = recording data from 21:50:00 to 21:59:59, Oct 29th, 2012
- Backup file format is PS and it cannot be played by public media player such as Windows media but can be played only by “Backup Play” on this software or by backup viewer provided with the DVR.

1.3.4. Backup Play




You can play backup file made from “Remote Backup” on web viewer. File format must be PS and PS backup file cannot be played in public media player.

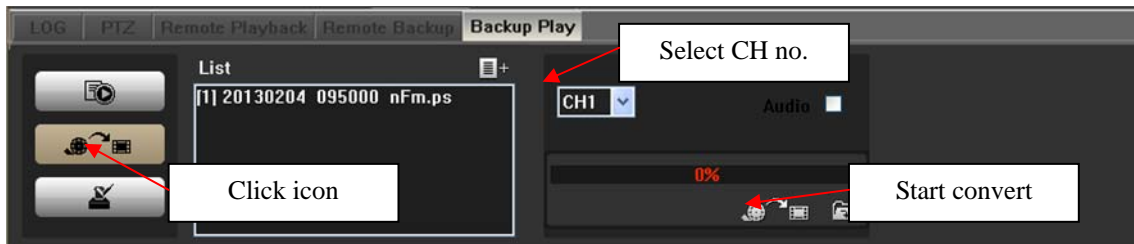
To play PS backup file, please follow the steps below,


- Step 1** Open PS backup file(s) clicking the icon
- Step 2** Click 1 file from the list and click “Play” button



- If the file(s) is more than one, play goes on to the next file until the last file.

There is a convert function to AVI from PS file format. Click  icon and select channel no.



Water mark check is available. From watermark check, you can verify if the backup file has been damaged or edited. Click  icon and software will check the backup file.

