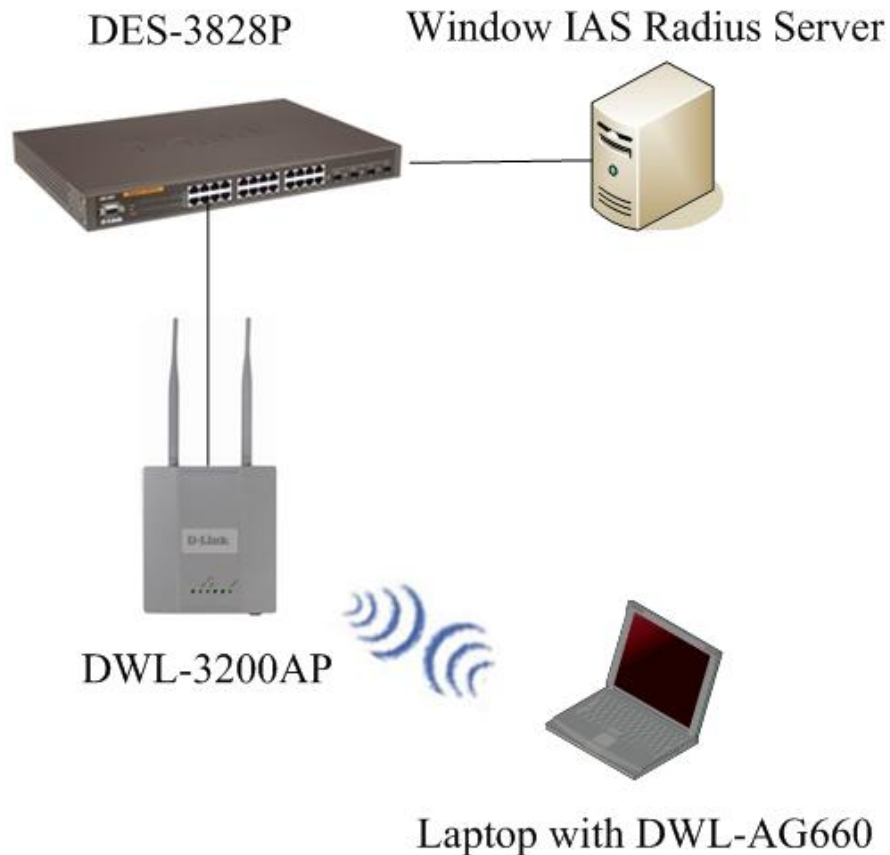


DWL-3200AP Dynamic VLAN function

1. Network topology :

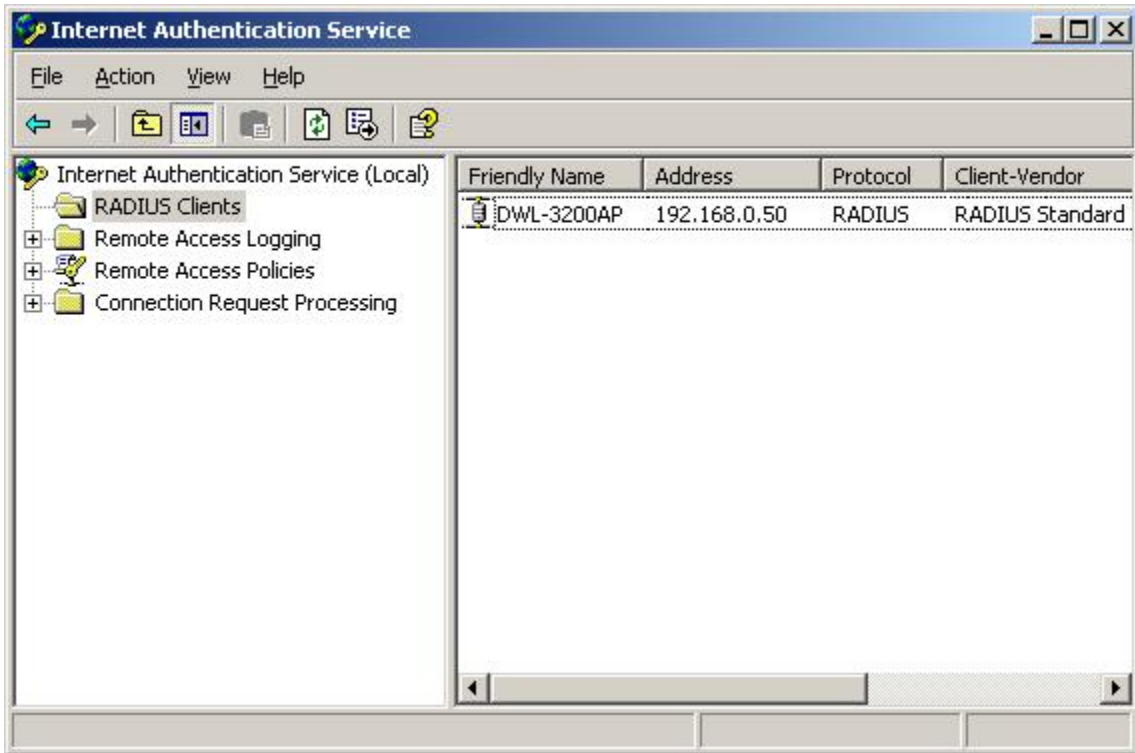


To use the Dynamic Vlan function on DWL-3200AP, you will need a Radius server which support IEEE 802.1x, a switch that support 802.1Q VLAN; DWL-3200AP at least firmware version 2.45 rc266, a wireless adapter that support WPA-EAP encryption.

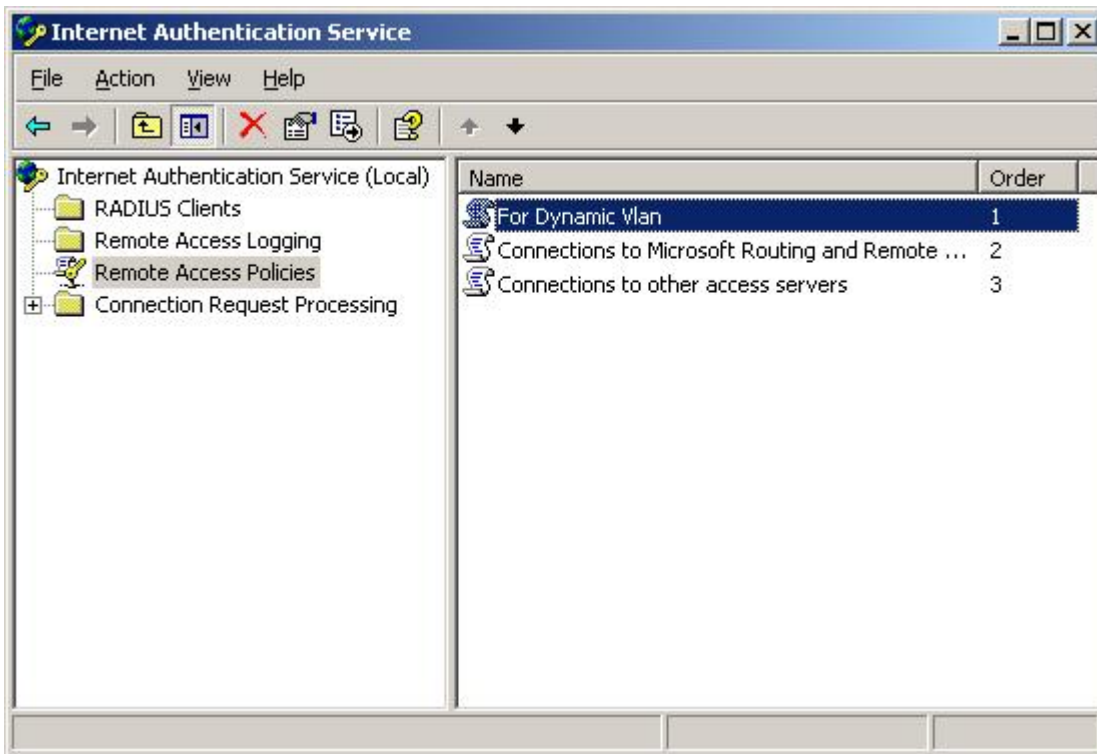
2. Configure Radius Server:

Here we use Windows IAS Radius Server for setup example.

a. Create a Radius client on IAS server, and configure the IP address as the DWL-3200AP's IP address.



b. Create the Remote Access Policy for wireless clients:

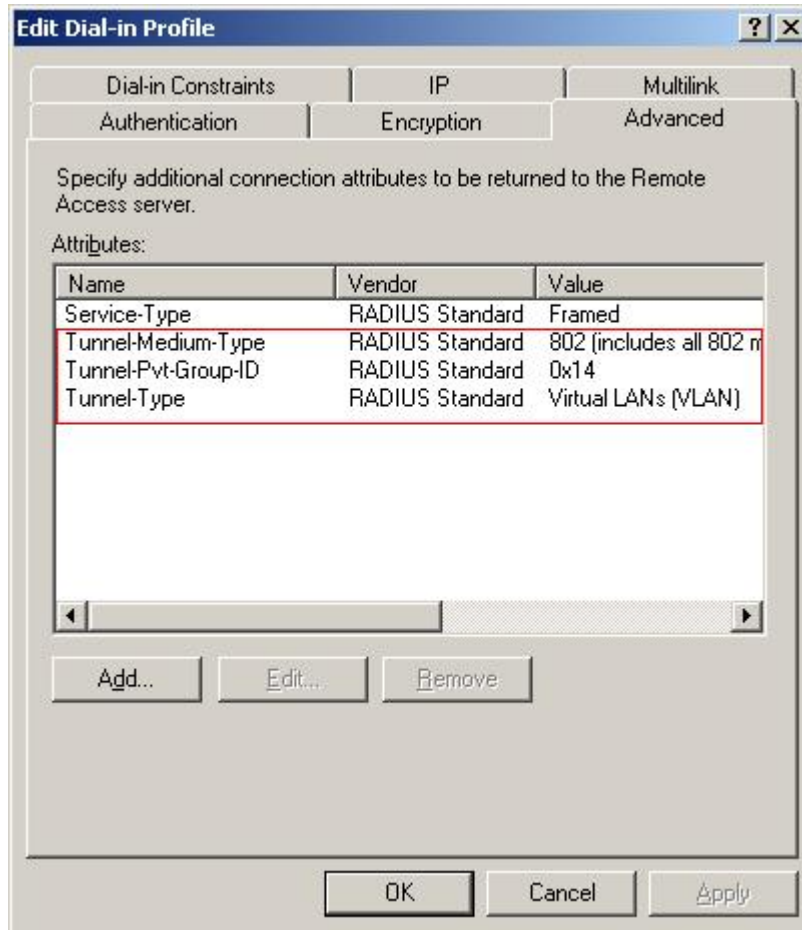


c. Add three attributes in the remote policy:

Attribute name: "Tunnel-Medium-Type", Value: "802(includes all 802midea plus Ethernet canonical format)"

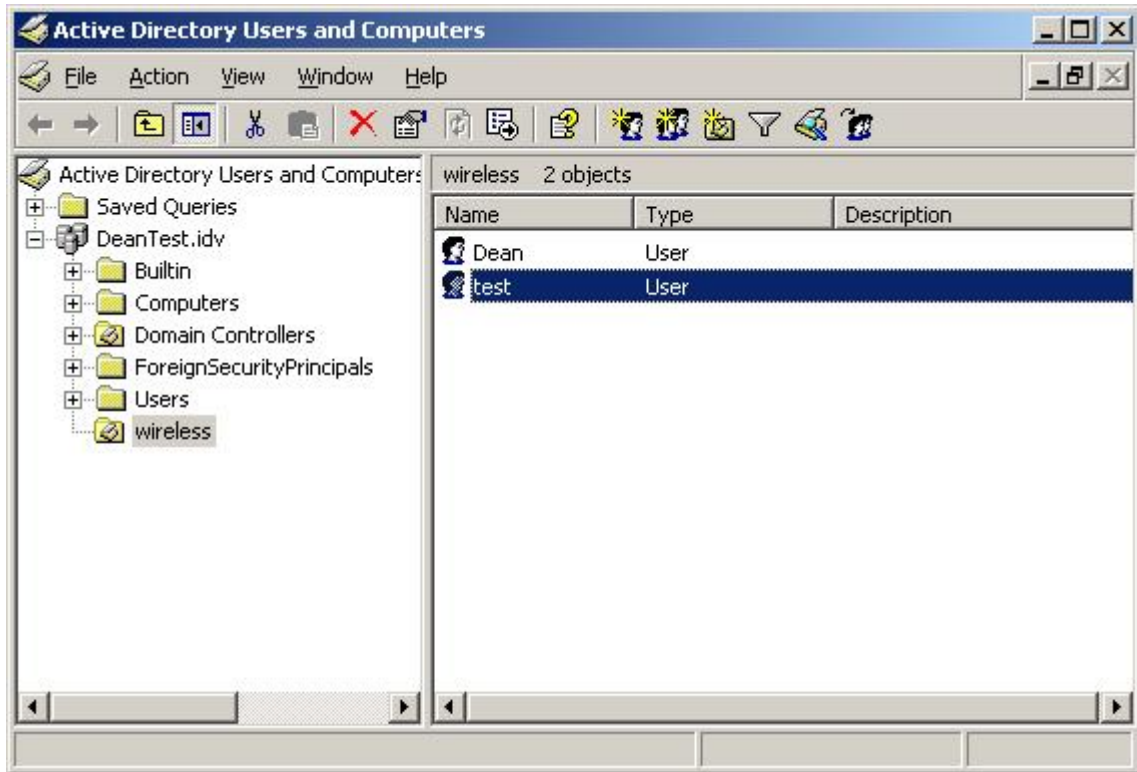
Attribute name: "Tunnel-Pvt-Group-ID", Value= the VID value which you want to give to the user.

Attribute name: "Tunnel-Type", Value: "Virtual LANs (VLAN)"



Note: the value of attribute "Tunnel-Pvt-Group-ID" is hexadecimal, please set a correct VID value.

d. Create remote login user.



3. Configure DES-3828P as below shows:

DES-3800:admin#show vlan

Command: show vlan

VID : 1 VLAN Name : default

VLAN TYPE : static Advertisement : Enabled

Member ports : 1,23-28

Static ports : 1,23-28

Current Tagged ports :

Current Untagged ports : 1,23-28

Static Tagged ports :

Static Untagged ports : 1,23-28

Forbidden ports :

VID : 10 VLAN Name : vlan10

VLAN TYPE : static Advertisement : Disabled

Member ports : 1-8

Static ports : 1-8

Current Tagged ports : 1

Current Untagged ports : 2-8

Static Tagged ports : 1

Static Untagged ports : 2-8

Forbidden ports :

VID : 20 VLAN Name : vlan20

VLAN TYPE : static Advertisement : Disabled

Member ports : 1,9-16

Static ports : 1,9-16

Current Tagged ports : 1

Current Untagged ports : 9-16

Static Tagged ports : 1

Static Untagged ports : 9-16

Forbidden ports :

VID : 30 VLAN Name : vlan30

VLAN TYPE : static Advertisement : Disabled

Member ports : 1,17-22

Static ports : 1,17-22

Current Tagged ports : 1

Current Untagged ports : 17-22

Static Tagged ports : 1

Static Untagged ports : 17-22

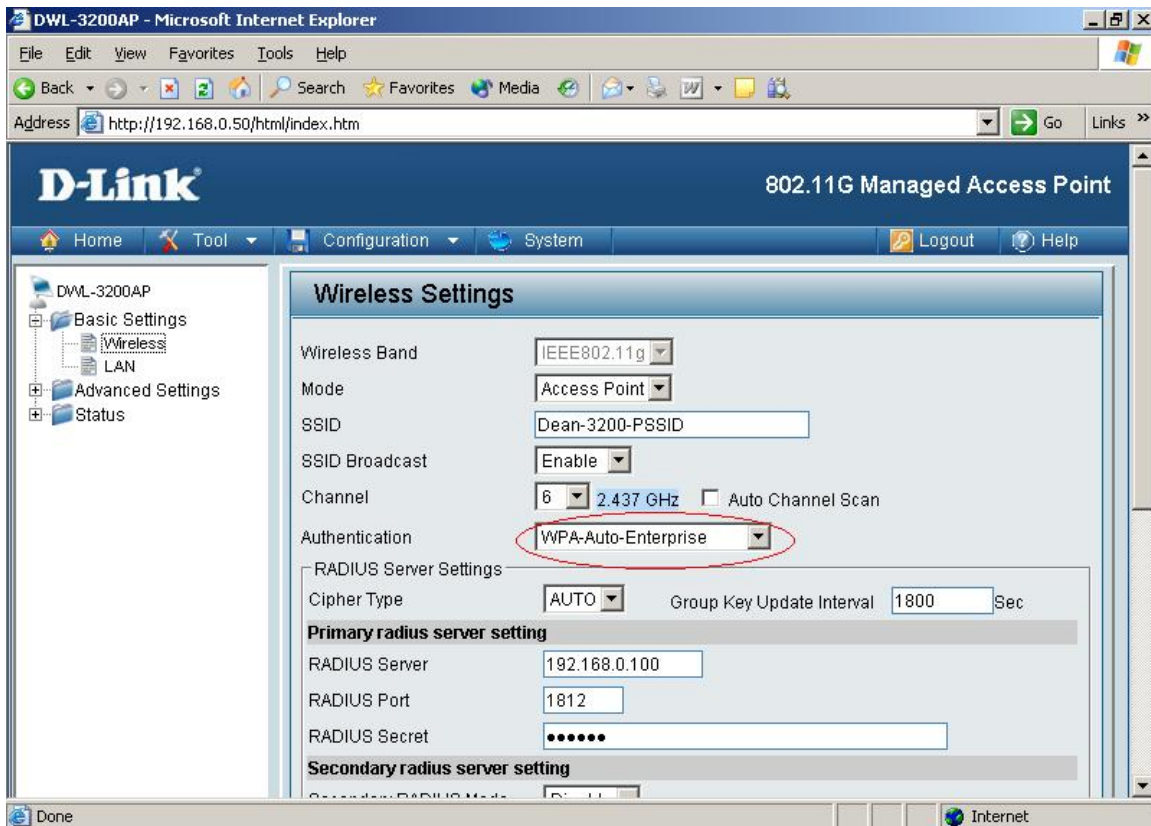
Forbidden ports :

Total Entries : 4

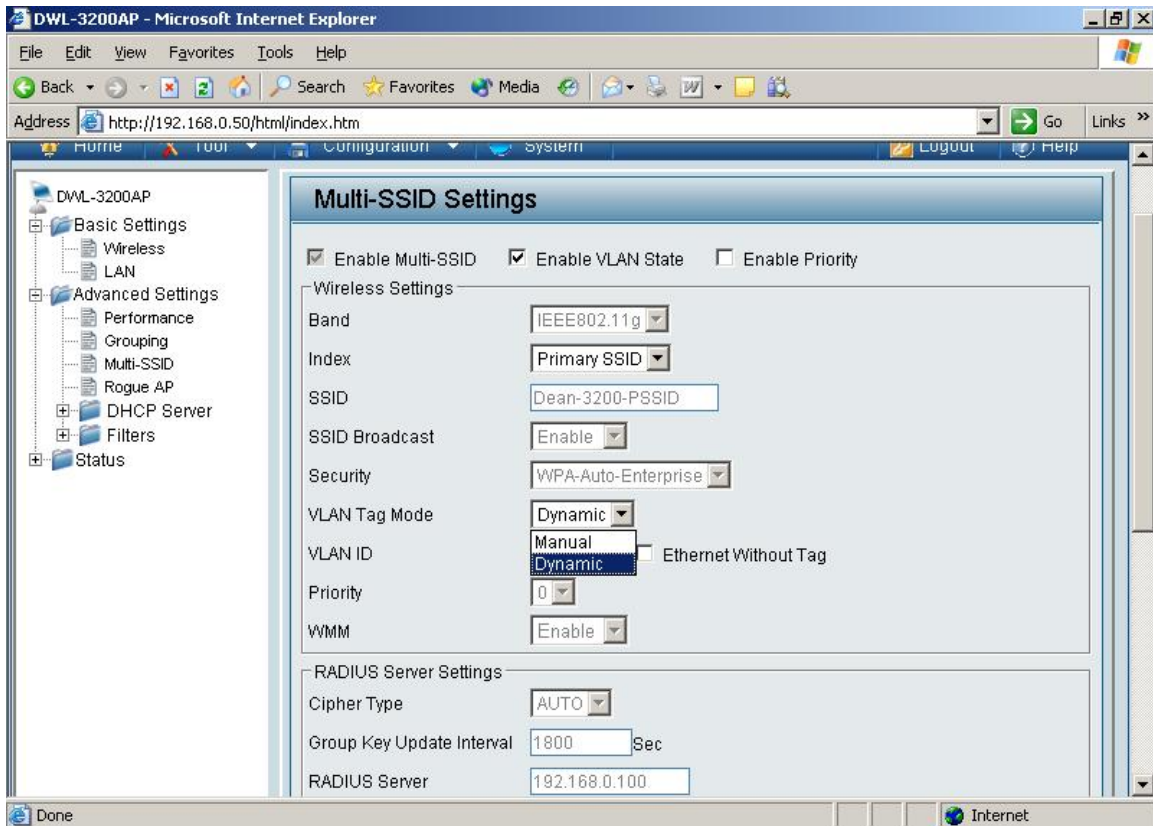
DES-3800:admin#

4. Configure DWL-3200AP :

a. Set the Authentication of Primary SSID as WPA/WPA2 Enterprise.



b. Enable Multiple SSID function, select the “Enable the VLAN Status” option, choose “Dynamic” from “VLAN ID” option, then configure the other Multi-SSID that you need.



5. Result:

Connect DWL-3200AP to DES-3828P port 1, connect Radius server to DES-3828P port 23; connect the Laptop to DWL-3200AP primary SSID, after passing the authentication of the Radius server, the Laptop will automatically be assigned to the vlan which you configured in radius server.

Made by Y.C. Ting

2008/04/30