

30-40 HP Outboard Installation and Water Pump Repair Procedure

NOTICE to INSTALLER

After Completing Installation, These Instructions Should Be Placed with the Product for the Owner's Future Use.

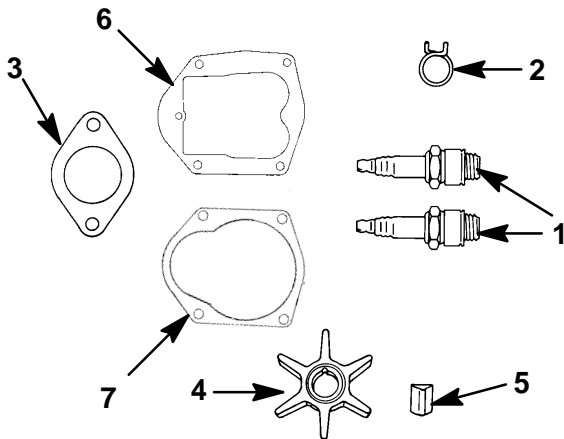
⚠ WARNING

DO NOT, under any circumstances, allow the cupped washers on the ends of the thumb screws to be closer than 1 inch (25.4mm) from top of (real) boat transom, not shims.

Table of Contents

| | Page |
|---|------|
| Repair Parts Kit | 1 |
| Installing Outboard on Boat Transom | 1 |
| Water Pump Repair | 3 |

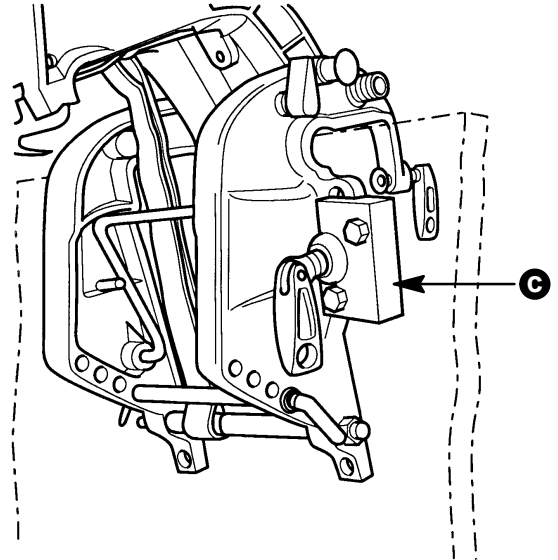
Repair Parts Kit



- 1 - Spark Plugs
- 2 - Extra Hose Clamps
- 3 - Carburetor Gasket
- 4 - Water Pump Impeller
- 5 - Impeller Drive Key
- 6 - Water Pump Base Plate Gasket
- 7 - Water Pump Cover Gasket

Installing Outboard on Boat Transom

IMPORTANT: The outboard can be secured to the boat transom, using optional Quicksilver Accessory Outboard Mounting Kit (" c" P/N 812432A5), to allow for quick removal and installation of outboard. Refer to installation instructions supplied with the mounting kit before drilling any mounting holes in the boat transom.



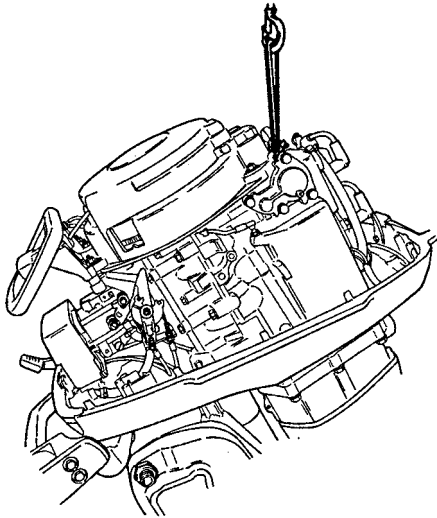
⚠ WARNING

Outboard must be fastened to boat transom one of two ways, permanently fastened to transom with thumb screws, and mounting bolts (provided), or secured to the transom using the optional outboard mounting kit (P/N 812432A5) should the outboard strike an underwater object or be steered into a sharp turn. Failure to fasten outboard correctly to the boat transom with mounting bolts or optional mounting kit could result in outboard ejecting suddenly off boat transom causing serious injury, death, boat damage or loss of outboard.

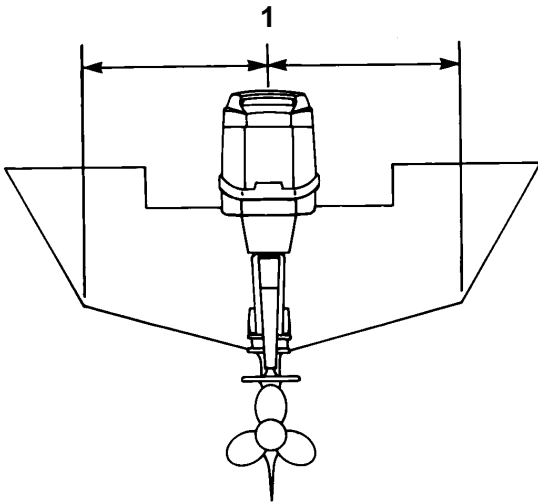
©1993, Brunswick Corporation

The following are registered trademarks of Brunswick Corporation: Autoblend, Jet-Prop, Mariner, Merc, MerCathode, MerCruiser, Mercury, Mercury Marine, Quicksilver, Ride-Guide, and Thruster.

Use lifting eye on outboard and lift outboard on boat transom.

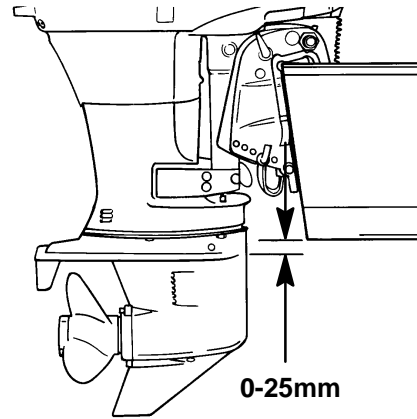


Center outboard on boat transom.

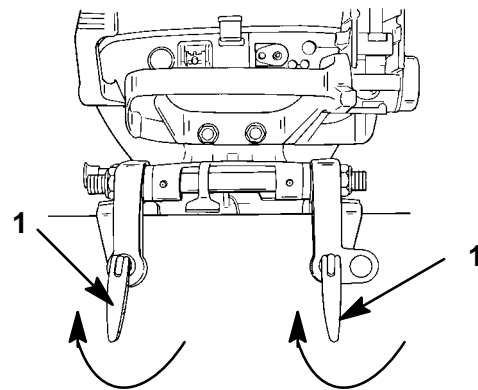


1 - Centerline

Install outboard to correct height.



Tighten transom clamp handles.

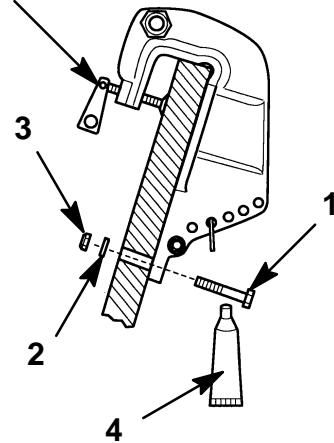


1 - Transom Clamp Handles

See WARNING on Page 1.

Drill two 3/8 in. (9.5mm) bottom holes and fasten outboard to boat transom.

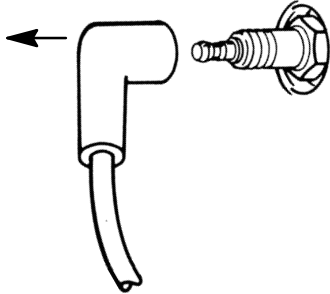
Tighten Transom Clamp Handles



- 1 - 3/8 in. (9.5mm) Bolts (2)
- 2 - Flat Washers (2)
- 3 - Locknuts (2)
- 4 - Marine Sealer

Water Pump Repair

Remove (and isolate) spark plug leads from spark plugs.



Shift into forward gear.

Tilt engine to full "Up" position.

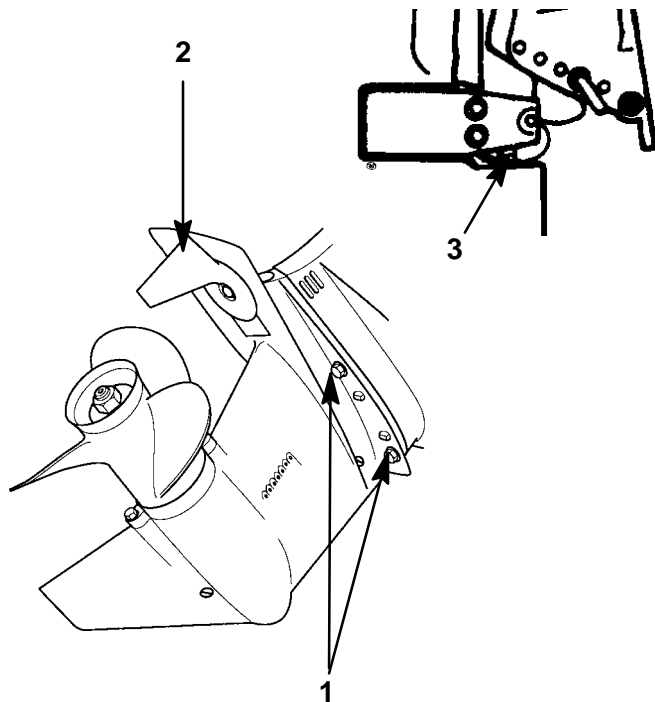
Remove four bolts and washers, two from each side.

Remove trim tab.

Remove locknut and washer in trim tab recess.

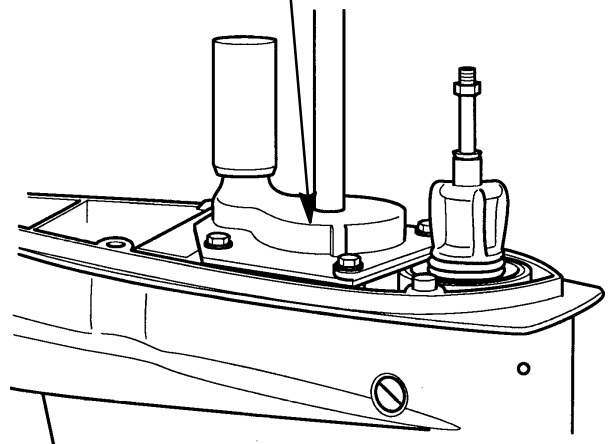
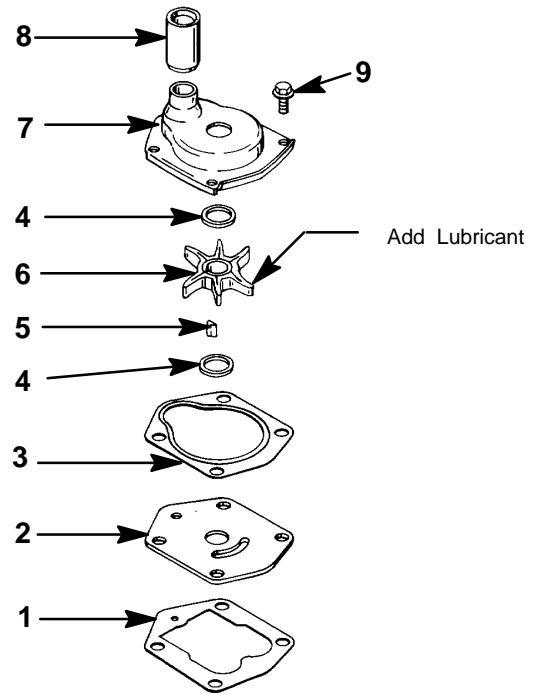
Disengage shift shaft nut.

Remove gear housing.



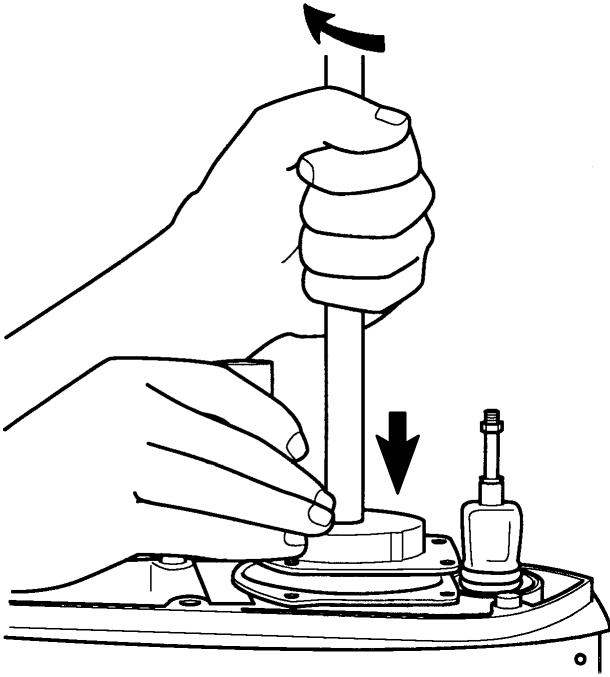
- 1 - Bolts (2 Each Side)
- 2 - Trim Tab
- 3 - Shift Shaft Nut

Replace water pump impeller.



- 1 - Water Pump Base Plate Gasket
- 2 - Water Pump Base Plate
- 3 - Water Pump Cover Gasket
- 4 - Nylon Washer
- 5 - Drive Key
- 6 - Impeller
- 7 - Water Pump Cover
- 8 - Water Tube Seal
- 9 - Bolts (4) Add Loctite to Threads and Torque to 60 lb. in. (6.8 N·m)

Turn drive shaft clockwise while pushing down cover.



Reinstall gear housing.

