

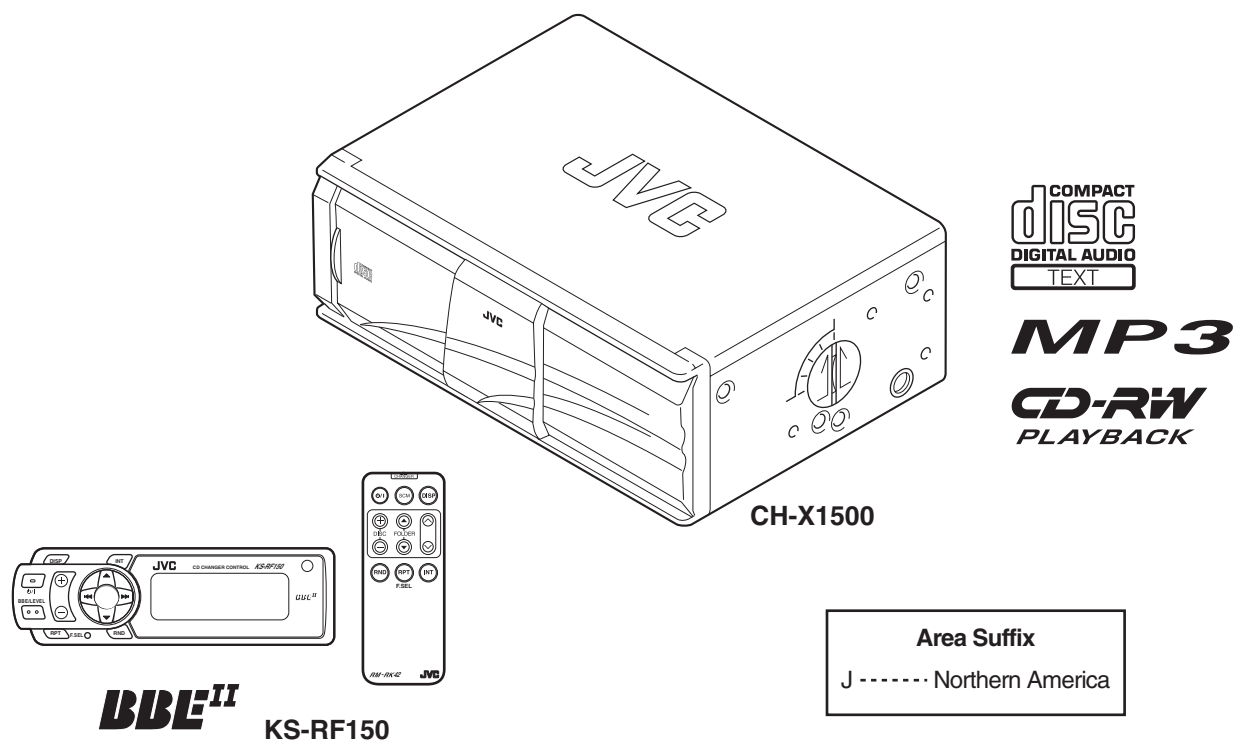
JVC

SCHEMATIC DIAGRAMS

CD CHANGER

CH-X1500RF

CD-ROM No.SML200303



CH-X1500RF is a combination of CH-X1500 and KS-RF150.
KS-RF150 is a combination of Remote control and the RF unit.

Contents

Block diagram	2-1
Standard schematic diagrams	2-2
Printed circuit boards	2-5

Safety precaution

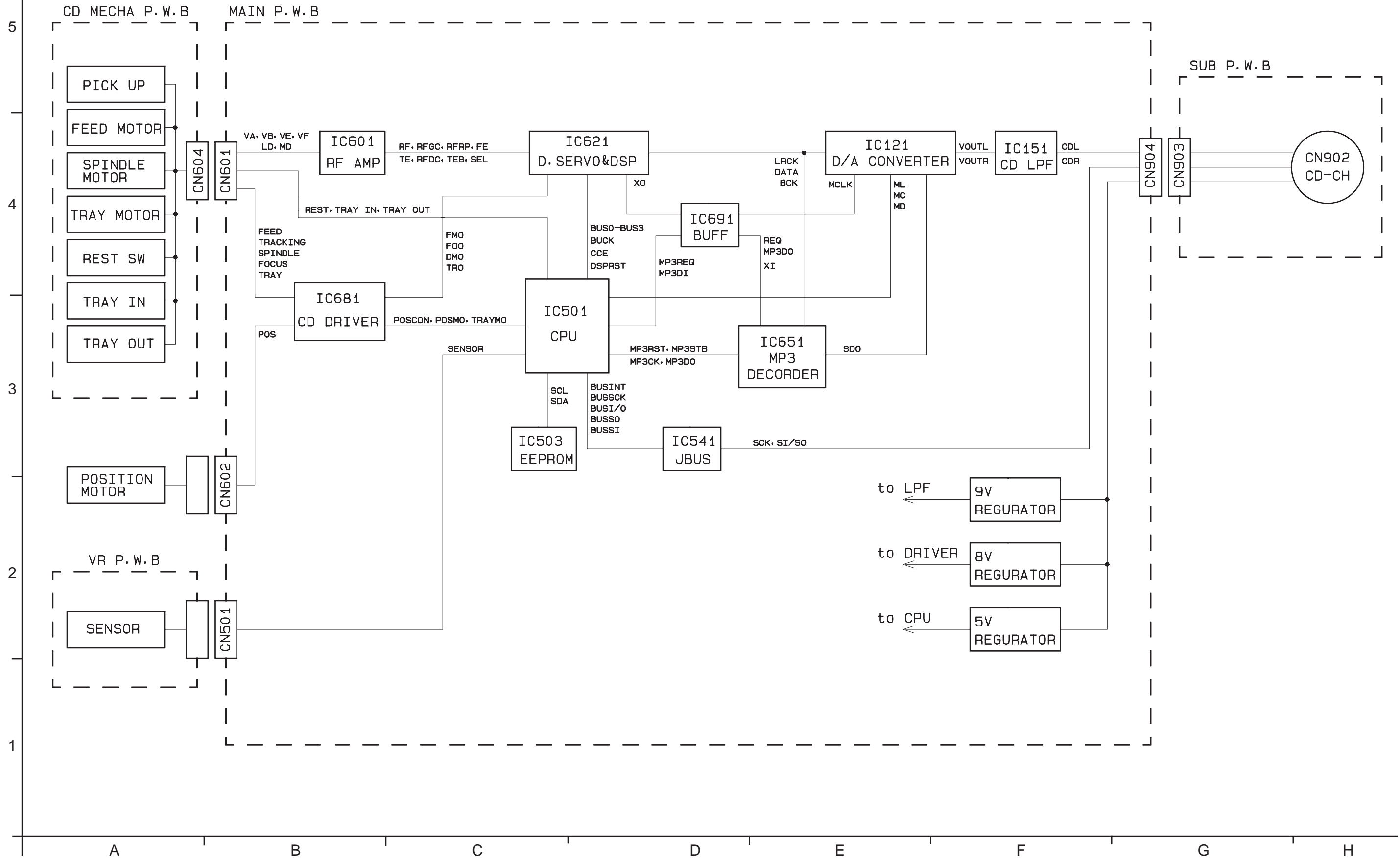


CAUTION Burrs formed during molding may be left over on some parts of the chassis. Therefore, pay attention to such burrs in the case of performing repair of this system.



CAUTION Please use enough caution not to see the beam directly or touch it in case of an adjustment or operation check.

Block diagram



Standard schematic diagrams

Main section (1)

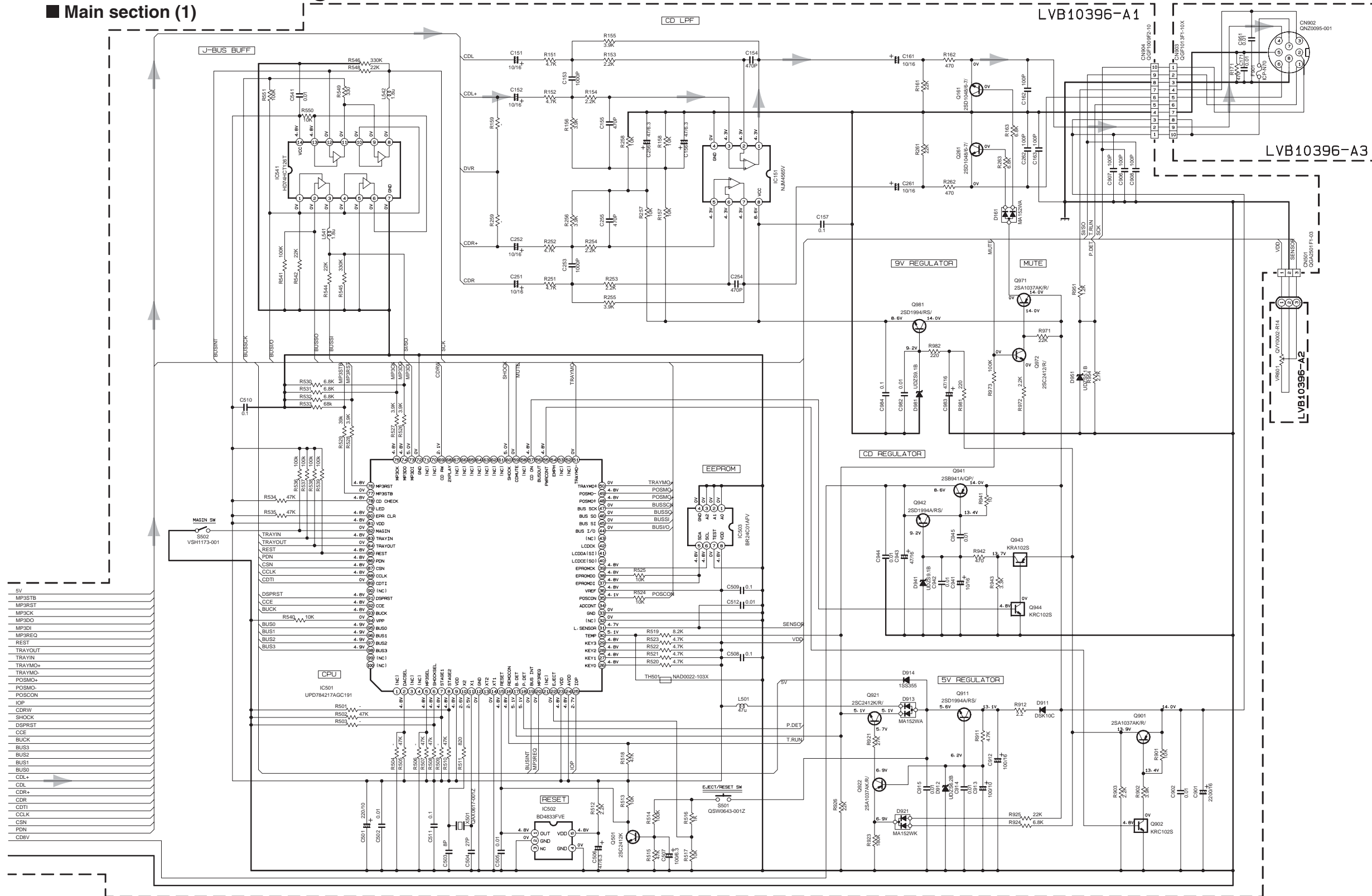
5

4

3

2

1



➔ L ch SIGNAL

KRA102S			10k
KRC102S			10k

NOTES

1. VOLTAGES ARE DC-MEASURED WITH A DIGITAL VOLT METER WITHOUT INPUT SIGNAL. CONDITION --- CD MODE.
2. UNLESS OTHERWISE SPECIFIED, ALL RESISTORS ARE 1/16W OR 1/10W OR 1/8W ±5% METAL GLAZE RESISTOR. ALL CAPACITORS ARE 50V OR 25V OR 16V CERAMIC CAPACITOR. ALL RESISTANCE VALUES ARE IN Ω(M). ALL CAPACITANCE VALUES ARE IN p(F)p(F). ALL E-CAPACITORS ARE SHOWN IN THE FORM OF CAPACITANCE/ RATED VOLTAGE (V).

A

B

C

2-2 D

E

F

G

H

■ Main section (2)

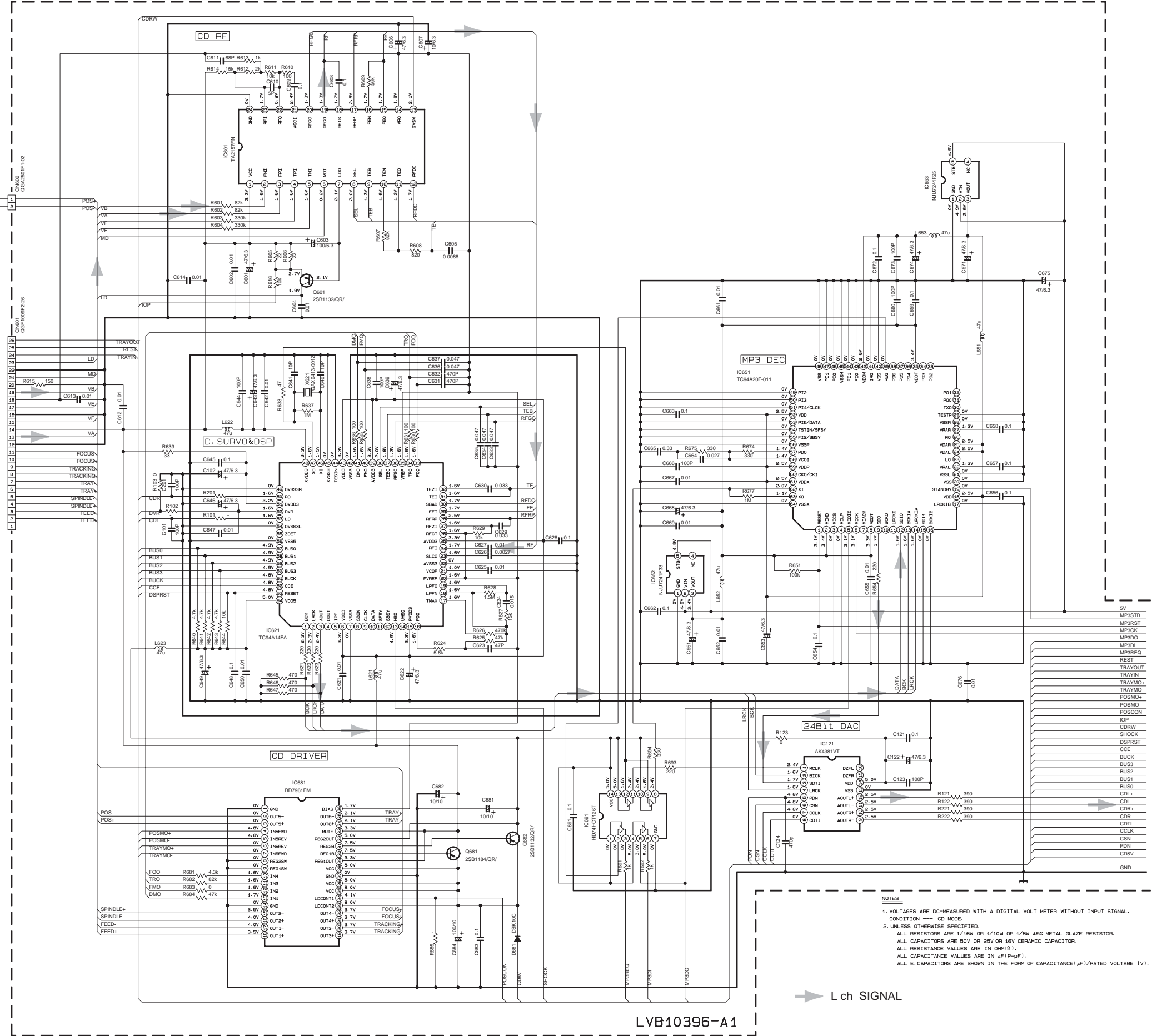
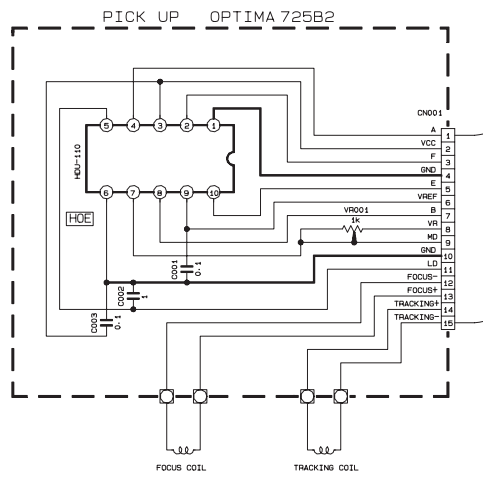
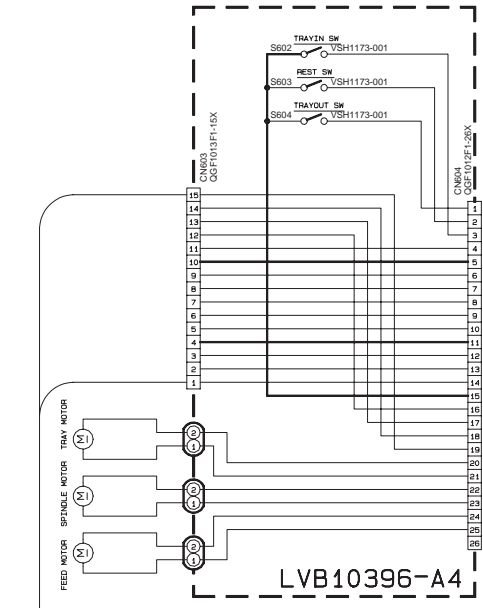
5

4

3

2

1



NOTES

1. VOLTAGES ARE DC-MEASURED WITH A DIGITAL VOLT METER WITHOUT INPUT SIGNAL. CONDITION --- CD MODE.
2. UNLESS OTHERWISE SPECIFIED, ALL RESISTORS ARE 1/16W OR 1/10W OR 1/8W ±5% METAL GLAZE RESISTOR. ALL CAPACITORS ARE 50V OR 25V OR 16V CERAMIC CAPACITOR. ALL RESISTANCE VALUES ARE IN Ω(MΩ). ALL CAPACITANCE VALUES ARE IN μF(P=μF). ALL E-CAPACITORS ARE SHOWN IN THE FORM OF CAPACITANCE(μF)/RATED VOLTAGE (V).

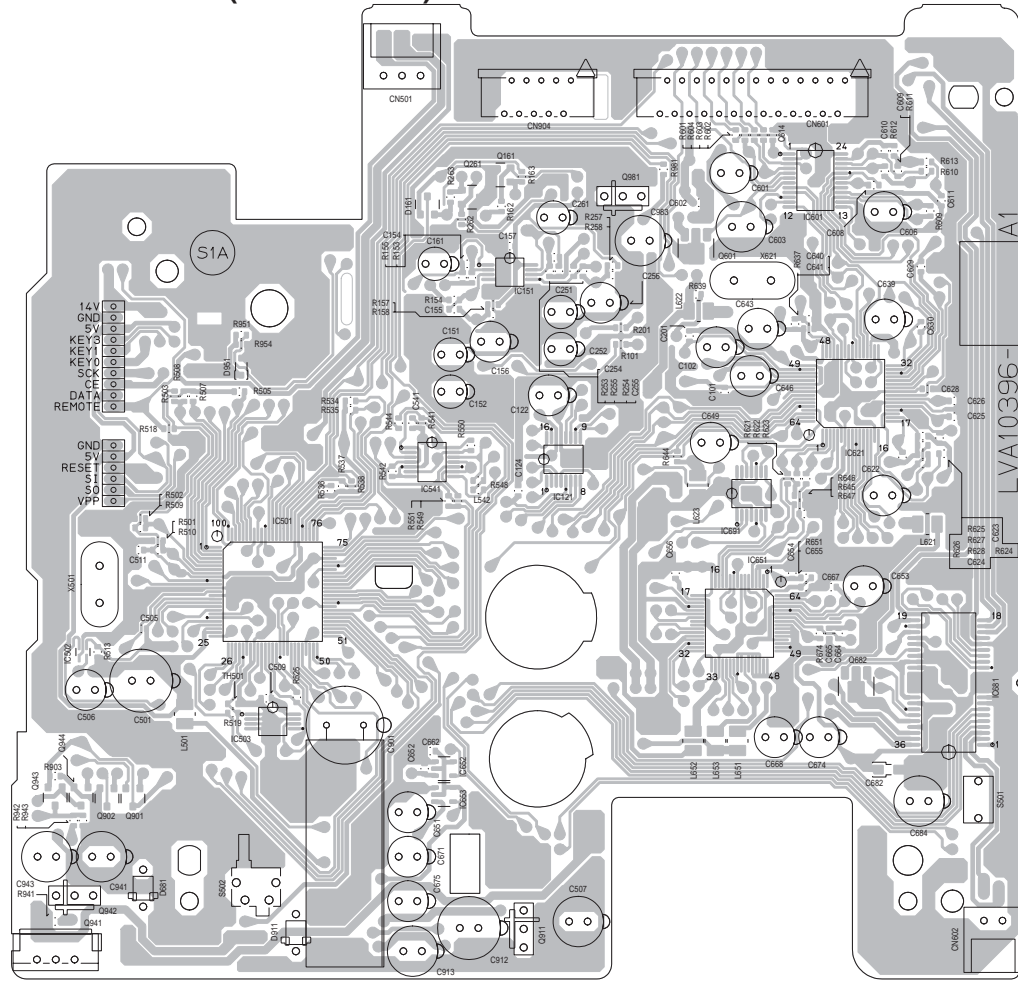
➔ L ch SIGNAL

LVB10396-A1

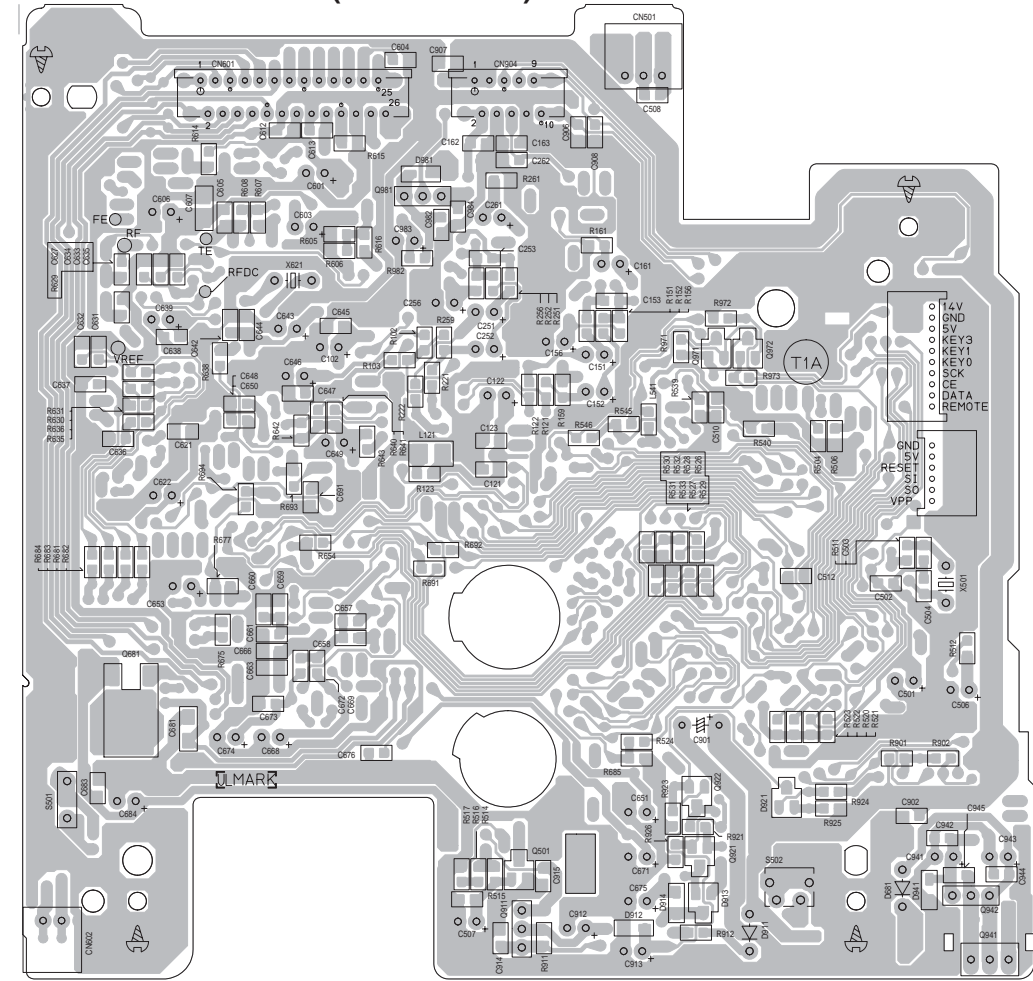
A B C D E F G H

Printed circuit boards

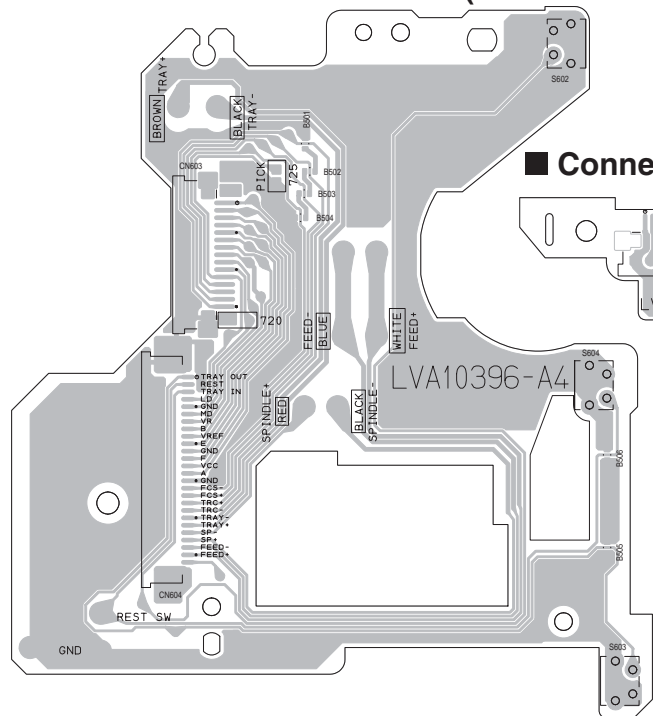
■ Main board (forward side)



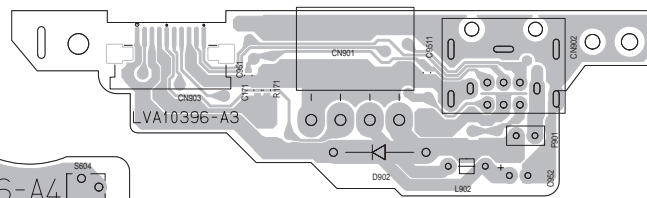
■ Main board (reverse side)



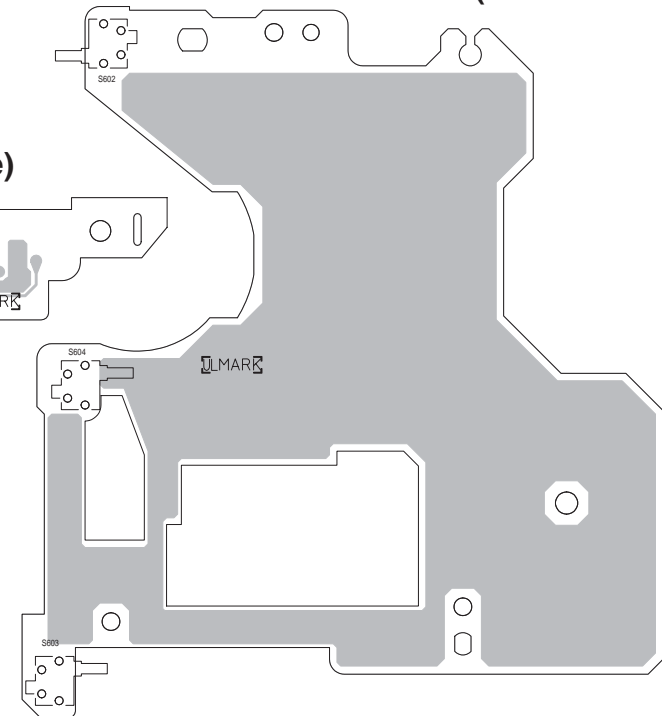
■ Traverse mechanism board (forward side)



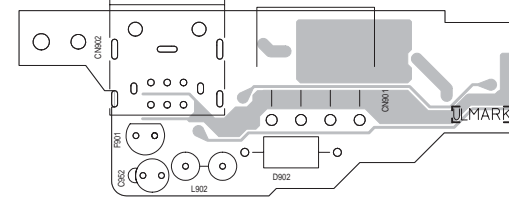
■ Connect board (forward side)



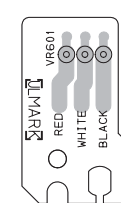
■ Traverse mechanism board (reverse side)



■ Connect board (reverse side)



■ Sensor board (reverse side)



5

4

3

2

1

A

B

C

24

D

E

F

G

H

< MEMO >

CH-X1500RF

JVC

VICTOR COMPANY OF JAPAN, LIMITED

AV & MULTIMEDIA COMPANY 10-1, 1Chome, Ohwatari-machi, Maebashi-city, 371-8543, Japan

(No.49804SCH)



Printed in Japan
200303