

DES-3526



KEY FEATURES

- **24 10/100 BASE-TX Ports + 2 Combo 10/100/1000 BASE-T/ SFP Slots**
- **8.8 Gbps Switching Capacity**
- **Network Management using Web GUI, CLI, SNMP, Telnet**
- **External RADIUS/ TACACS+ Authentication support**
- **Virtual Stack of upto 32 units using D-Link SIM**
- **Redundant Power Supply**
- **Robust Security & L2/L3/L4 Multi-Layer QoS**

High performance managed, stackable switch for workgroups and departments

Part of the DES-3500 series, the DES-3526 is a member of the D-Link xStack family of next generation switches that deliver performance, flexible expansion, robust security, multi-layer Quality of Service (QoS), Power Over Ethernet and redundant power option. Supporting D-Link's Single IP Management, these switches comprise the workgroup access-layer virtual stack for seamless integration with the L3 core Gigabit switches to form part of a multi-level network structured with high-speed backbone and centralized servers.

Features and Benefits:

Cost-Effective Virtual Stack:

The DES-3526 forms an Ethernet workgroup stack with flexible Gigabit uplinks. Traffic running among units in this virtual stack is through the full duplex Gigabit interfaces and your usual network wires, doing away with the costly and cumbersome stacking cables. Without any stacking cable, cable distance barrier and physical stacking limitations, your stack can comprise units that are located anywhere on the network, minimizing the impact of any single point of failure.

Single IP Management:

The DES-3526 simplifies and speeds up your management tasks, as multiple switches can be configured, monitored and maintained from any workstation running a web browser through one unique IP address. The stack is managed as a single object, with all units identified by a single IP address. You can see a Tree View of the members of the stack and a network topology showing the locations of the units and their link information. This simple yet powerful web-based management eliminates the need for you to install expensive SNMP network management software. You can add units to up

to 32 switches per stack not limited to any specific models. With embedded Single IP Management, you can expand your Ethernet stack to include L3 core Gigabit and chassis based switches to accommodate your network growth.

Comprehensive Security:

The DES 3526 provides a complete set of security features for connectivity and access control. This set includes Access Control Lists (ACLs) based on MAC address, switch port, IP address, and/or TCP/UDP port numbers, 802.1x user authentication and MAC address control. The DES 3526 also provides central management for administration access via TACACS+ and RADIUS. Together with network application control, this security ensures that not only proper user access is served, but malicious traffic is also prevented from being spread across the network.

Enhanced Network Performance & Availability:

The DES 3526 switch provide extensive VLAN support including GARP/GVRP, 802.1Q and asymmetric VLAN to enhance network security and performance. Bandwidth control allows you to set traffic limit for each port to control the traffic volume from the edge of the network. 802.1w Rapid Spanning Tree with network recovery of less than 15 seconds and redundant power option increase the reliability and availability of your Virtual Stack. The DES 3526 implements a robust set of multi-layer (L2, L3, L4) QoS/CoS features to ensure that critical network services like VoIP, ERP, Intranet and video conference are served with proper priority. Priority queues for 802.1p/TOS/DiffServ are supported, with classification and marking based on MAC SA/DA, IP SA/DA, and/or TCP/UDP port numbers.

Interface

- 10/100BASE-TX Ports: 24
- Combo 10/100/1000BASE-T Ports/SFP Slots: 2
- Auto-Negotiation of Network Speeds (RJ-45 Ports): Yes
- Auto-MDI/MDIX (RJ-45 Ports): Yes
- RS-232 Console Port: Yes

Power

- Internal Power Supply: DC to DC
- Power Input: 100 to 240VAC, 10A, 50 to 60Hz
- Power Output: 12VDC, 5A (max.)
- Power Consumption: 23 watts (max.)
- Optional Redundant Power Supply: Yes

Performance

- Switching Capacity: 8.8Gbps
- Max. 64-Byte System Packet Forwarding Rate: 6.6Mpps
- MAC Address Table: 8 K
- Packet Buffer Size: 16MB

Diagnostic LEDs

- 10Mbps or 100Mbps Speed (Per Ethernet Port): Yes
- 10/100Mbps or 1000Mbps Speed (Per Gigabit Port): Yes
- Link/Activity (Per Port): Yes
- Power, Console, RPS (Per Device): Yes

Physical/Environmental

- Ventilation DC Fans: 40 x 40 mm x 1
- BTU/Hr.: 73.8
- Dimensions: 441 x 207 x 44 mm
- Size: 19-Inch Standard Rack-Mount Width, 1U Height
- Weight: 2.56 kg (5.64 lbs)
- Operating Temperature: 0° to 40° C
- Storage Temperature: -40° to 70° C
- Humidity: 5 to 95% Non-

Condensing

- EMI: FCC Class A, CE, C-Tick
- Safety: CSA International
- MTBF: 53,838 Hours
- Acoustic (Refer to ISO-7779): < 34dB

SOFTWARE FUNCTIONS

VLAN

- IEEE 802.1Q Tagged VLAN
- Port-based VLAN
- GARP/GVRP
- Maximum number of VLANs per device: 255 VLANs (static and dynamic combined)

Priority Queues (CoS)

- Standard: IEEE 802.1p
- Number of queues: 4

Traffic Classification (CoS)

- Can be based on user-definable application types:
 - TOS
 - Diffserv (DSCP)
 - Port-based
 - MAC address
 - IP address
 - TCP/UDP port number

Access Security

- Port security (64 MAC addresses max.)
- 802.1x port-based access control
- 802.1x MAC-based access control
- SSH v.1, v.2
- SSL
- Per port traffic segmentation
- IP-MAC-Port binding: 512 entries

Access Control List

- Multi-layer ACL (800 entries) based on:
 - Port number
 - TOS
 - Diffserv (DSCP)
 - MAC address
 - IP address

- Packet protocol type
- TCP/UDP port number (user-definable application types)
- TCP/UDP payload (user-definable packet content)
- Per port ACL definition
- IP-MAC-Port binding ACL mode

Spanning Tree Protocol

- 802.1D Spanning Tree compatible
- 802.1w Rapid Spanning Tree (ring protection with network recovery time of less than 15 sec.)
- Per port BPDU filter

IP Multicast

- IGMP v1, v2
- IGMP snooping (128 groups)
- Enable definite VLAN for Multicast
- IGMP Fast Leave
- User-definable per-port IP multicast range limit

Port Trunk

- Maximum number of ports per trunk: 8
- Maximum number of trunks per device: 6
- Operation mode: load sharing
- 802.3ad compatible Link Aggregation (LACP) static & dynamic modes on uplink and downlink ports for traffic load balance and redundancy

Performance Enhancement Functions

- Traffic segmentation
- Bandwidth control from 1Mbps to the port's maximum rate (in steps of 1Mbps)
- Broadcast storm control: user-configurable from 1pps (packet per second)
- D-Link Safeguard Engine
- CPU interface filtering

Management Support

- Management Support
- Single IP Management (SIM) v1.6
- CLI (command line interface)
- RMON v1 support
- Telnet client
- Telnet server (up to 8 sessions)
- TACACS+ authentication on switch admin access
- RADIUS authentication on switch admin access
- SYSLOG
- Dual Images
- Web GUI traffic monitoring
- Web-based MAC address browsing
- RFC 2030 SNTP (Simple Network Time Protocol)
- SNMP v1, v2c, v3
- SSH/SSL v2
- Bootp/DHCP client
- DHCP relay option 82
- STP loopback detection
- Password recovery

MIBs

- 802.1Q Q-BRIDGE-MIB (RFC 2674)
- 802.1p P-BRIDGE-MIB (RFC

- 2674)
- MIB-II (RFC 1213)
- Bridge MIB (RFC 1493)
- RMON MIB (RFC 1757) group 1, 2, 3, 9 (Alarm, Statistics, History, Event)
- IGMP MIB (RFC 2833)
- IF MIB (RFC 2233)
- Ethernet-like MIB (RFC 1643)
- PING-MIB and TRACEROUTE-MIB (RFC 2925)
- ICMP Ping by MIB
- Rate limiting by MIB
- Save configuration by MIB
- 802.1w setting and read by MIB
- Port interface MIB-II trap (RFC 1215)
- D-Link enterprise MIB

Firmware Upgrade

- TFTP remote upgrade

Optional SFP Transceiver

- DEM-310GT SFP transceiver for 1000BASE-LX, single-mode fiber, max. distance 10km, 3.3V
- DEM-311GT SFP transceiver for 1000BASE-SX, multi-mode fiber, max. distance 550m, 3.3V
- DEM-312GT2 SFP transceiver for 1000BASE-SX, multi-mode fiber,

max. distance 2km, 3.3V

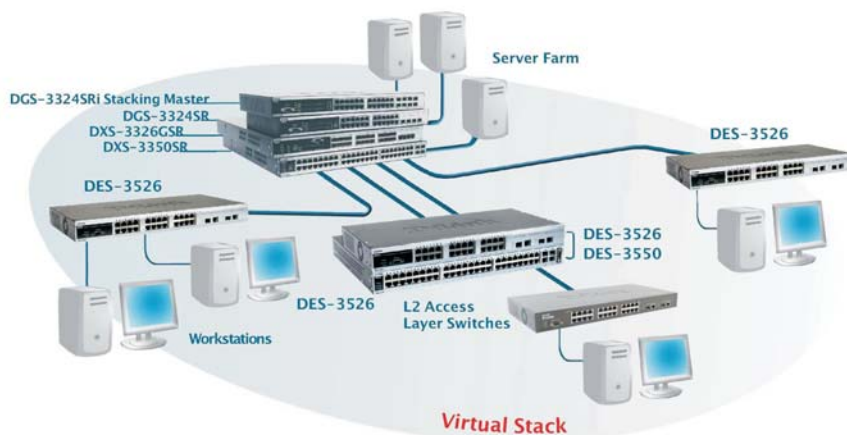
- DEM-314GT SFP transceiver for 1000BASE-LHX, single-mode fiber, max. distance 50km, 3.3V
- DEM-315GT SFP transceiver for 1000BASE-LX, single-mode fiber, max. distance 80km, 3.3V

Optional Redundant Power Supply

- DPS-200 60-watt redundant power supply
- DPS-800 2-slot redundant power supply chassis
- DPS-900 8-slot redundant power supply chassis

Management Software

- DS-510 D-View 5.1 SNMP Network Management Program



Stacking With Single IP Management



Ordering Information:

DES-352624-port

10/100Mbps with 2 Combo
1000Base-T/Mini-GBIC
ports L2 Managed
Stackable Switch

©2007 D-Link India Ltd. All rights reserved.

Users' agree to indemnify, defend and hold D-Link harmless from and against all losses, expenses, damages, including reasonable costs and fees, arising out of or relating to any misuse by the Users of the Product or of the information or content provided in this document.