

# AXIS 213 PTZ Network Camera

*Pan, tilt and zoom live video directly over your network*

The AXIS 213 PTZ Network Camera enables advanced remote monitoring with pan, tilt and zoom through operator control over IP networks. It features a powerful 26x optical zoom, auto focus lens and an IR mode for nighttime conditions.

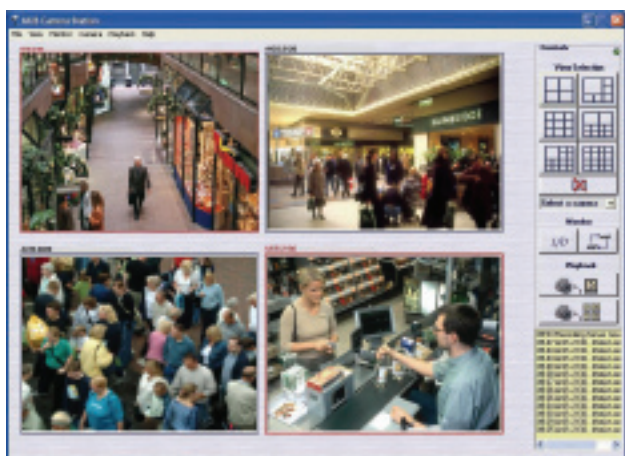
The AXIS 213 PTZ delivers superior quality Motion JPEG and MPEG-4 video streams simultaneously. The camera provides 20 preset positions and 1 preset sequence to monitor specific areas. It also offers built-in motion detection, pre- and post-alarm image buffering, and advanced event management features.

The optional AXIS 213CM Connection Module provides functionalities such as two-way audio, in addition to two alarm inputs and three relay outputs.

The AXIS 213 PTZ connects directly to an IP network, and with a built-in Web server, enables remote monitoring and control from any PC connected to the local area network or the Internet. The AXIS 213 PTZ is ideal for monitoring people and property, and for remote learning and troubleshooting. A protective dome housing is available for indoor and outdoor applications.



- Pan/tilt/zoom network camera with built-in 26x optical zoom and auto focus
- Operates under all light conditions, indoors as well as outdoors
- Superior image quality in simultaneous Motion JPEG and MPEG-4 video streams
- Resolutions up to 768x576 at up to 25 fps (PAL) or 704x480 at 30 fps (NTSC)
- Optional AXIS 213CM Connection Module for two-way audio and alarm inputs/outputs





## Specifications

<b>Models</b>	AXIS 213 PTZ 50 Hz (PAL) AXIS 213 PTZ 60 Hz (NTSC) Supports both desktop and ceiling mounting	<b>Connectors</b>	Ethernet 10BaseT/100BaseTX, RJ-45 26-pin multi-connector (to Connection Module)**
<b>Image Sensor</b>	1/4" Interlaced CCD	<b>Processors and memory</b>	CPU: ETRAX 100LX 32-bit Video processing and compression: ARTPEC-2 RAM: 32 MB, Flash: 4 MB Battery backed up by real-time clock
<b>Lens</b>	3.5 - 91 mm, F1.6 - F4.0, motorized zoom lens, auto focus, manual day/night	<b>Power</b>	11.5 - 14 V DC, max 13 W
<b>Angle of view</b>	1.7° - 42° horizontal	<b>Operating conditions</b>	5 - 40 °C (41 - 104 °F) Humidity 20 - 80% RH (non-condensing)
<b>Zoom</b>	26x optical, 12x digital	<b>Installation, management and maintenance</b>	Axis Camera Management tool on CD and web-based configuration, configuration backup and restore Firmware upgrades over HTTP or FTP, firmware available at <a href="http://www.axis.com">www.axis.com</a>
<b>Minimum illumination</b>	Color mode: 1 lux, F1.6 IR mode: 0.1 lux, F1.6; using built-in IR light in complete darkness up to 3 m (9.8ft)	<b>Video access from web browser</b>	Camera live view, video recording to file (ASF), sequence mode for up to 20 PTZ presets or Axis video sources, customizable HTML pages
<b>Pan Range</b>	± 170°	<b>Minimum web browsing requirements</b>	Pentium III CPU 500 MHz or higher, or equivalent AMD 128 MB RAM, AGP graphics card 32 MB RAM, Direct Draw Windows XP, 2000, DirectX 9.0 or later Internet Explorer 6.x or later For other operating systems and browsers see <a href="http://www.axis.com/techsup">www.axis.com/techsup</a>
<b>Tilt Range</b>	-10 to 90°	<b>System integration support</b>	Open API for software integration including AXIS VAPIX API*, AXIS Media Control SDK*, event trigger data in video stream Embedded Linux operating system *Available at <a href="http://www.axis.com">www.axis.com</a>
<b>Max speed</b>	Pan: 1 - 90°/sec Tilt: 1 - 70°/sec	<b>Supported protocols</b>	IP, HTTP, TCP, ICMP, RTSP, RTP, UDP, IGMP, RTCP, SMTP, FTP, DHCP, UPnP, Bonjour, ARP, DNS, DynDNS, SOCKS, NTP. More information on protocol usage available at <a href="http://www.axis.com">www.axis.com</a>
<b>Video compression</b>	Motion JPEG MPEG-4 Part 2 (ISO/IEC 14496-2), Profiles: ASP and SP	<b>Included Accessories</b>	Installation Guide, CD with User's Manual, demo software, installation and management tools Ceiling and desktop mount kit Power supply 13 V DC MPEG-4 licenses (1 encoder, 1 decoder) MPEG-4 decoder (Windows)
<b>Resolutions</b>	Resolutions 4CIF, 2CIFExp, 2CIF, CIF, QCIF max 704x480 (NTSC) 704x576 (PAL) min 160x120 (NTSC) 176x144 (PAL)	<b>Video management software (not incl.)</b>	AXIS Camera Station - Surveillance application for viewing, recording and archiving up to 25 cameras See <a href="http://www.axis.com/partner/adp_partners.htm">www.axis.com/partner/adp_partners.htm</a> for more software applications via partners
<b>Frame rate (NTSC/PAL)</b>	Motion JPEG: Up to 30/25 fps at 4 CIF MPEG-4: Up to 21/17 fps at 4CIF/2CIFExp Up to 30/25 fps at 2CIF/CIF/QCIF	<b>Accessories (not incl.)</b>	AXIS 213CM Connection Module** - provides duplex audio, I/O and analog video output Housings for adverse indoor/outdoor environments AXIS 292 Network Video Decoder AXIS 295 Video Surveillance Joystick IR Illuminators AXIS MPEG-4 Decoder multi-user license pack
<b>Video streaming</b>	Simultaneous Motion JPEG and MPEG-4 Controllable frame rate and bandwidth Constant and variable bit rate (MPEG-4)	<b>Approvals</b>	EN55022 Class B, EN 61000-3-2, EN61000-3-3, EN55024, FCC Part 15, Subpart B Class B, VCCI Class B, C-tick AS/NZS 3548, ICES-003 Class B, EN 60950 Power supply: EN60950, UL, cUL (power supply)
<b>Image settings</b>	Compression levels: 11 (Motion JPEG)/23 (MPEG-4) Rotation: 90°, 180°, 270° Backlight compensation, manual IR cut filter Day/Night, white balance, Color/BW, brightness, noise reduction, exposure control Overlay capabilities: time, date, text or image Aspect ration correction De-interlace (4CIF Resolution)	<b>Dimensions (HxWxD) and weight</b>	130 x 104 x 130 mm (5.12" x 4.09" x 5.12") 700 g (1.55 lb) excl. power supply
<b>Pan/Tilt/Zoom</b>	20 preset positions, sequence mode, control queue Supports Windows compatible joysticks <i>Designed for operator control*</i>		
<b>Audio</b>	Requires AXIS 213CM Connection Module** Two-way (full or half duplex) or one-way Audio compression G.711 PCM 64kbit/s, G.726 ADPCM 32 or 24 kbit/s		
<b>Security</b>	Multiple user access levels with password protection IP address filtering		
<b>Users</b>	20 simultaneous users Unlimited number of users using multicast (MPEG-4)		
<b>Alarm and event management</b>	Events triggered by built-in motion detection, PTZ preset position, external inputs**, audio detection or according to a schedule, image upload over FTP, email and HTTP, notification over TCP, email, HTTP and external outputs**, pre- and post alarm buffer of 6 MB		

\* Not designed for continuous PTZ movements e.g. Guard tour. For continuous movement, please see Axis network dome offering



**AXIS 213CM Connection Module	
<b>Connectors</b>	2 alarm inputs, 3 outputs Composite video: 1 BNC output
<b>Audio</b>	Line in (3.5 mm jack), Line out (3.5 mm jack)
<b>RS-232</b>	9-pin D-Sub
<b>Connection cable</b>	1 m (3.3 ft)

[www.axis.com](http://www.axis.com)