



CAT4240 LED Driver Evaluation Board

INTRODUCTION

This document describes the CAT4240EVAL2 evaluation board for the CAT4240 high efficiency step – up LED driver. The CAT4240 delivers an accurate constant current ideal for driving LEDs.

SCHEMATIC

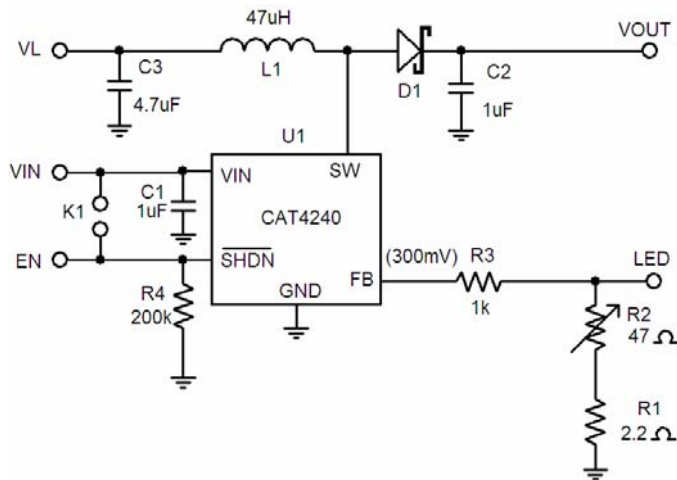


Figure 1. CAT4240EVAL2 Schematic



Figure 2. CAT4240EVAL2 Board

BILL OF MATERIALS

Name	Manufacturer	Description	Part Number	Units
U1	Catalyst	High Efficiency Boost LED Driver, SOT23-5	CAT4240	1
C1	Taiyo Yuden	Ceramic Capacitor 1.0µF/ 6.3V X5R, Size 0805	JMK212BJ105KK-T	1
C2	Taiyo Yuden	Ceramic Capacitor 1.0µF/ 50V X7R, Size 1210	UMK325BJ105KH-T	1
C3	Taiyo Yuden	Ceramic Capacitor 4.7µF/ 25V X5R, Size 0805	TMK212BJ475KG-T	1
D1	NXP	Schottky Diode 60V/1A, SOD323F	PMEG6010CEJ T/R	1
L1	NIC	Inductor 47µH/0.8A	NPIS63D470MTRF	1
R1	Panasonic	SMT Resistor 2.2Ω/250mW, Size 1206	ERJ-8GEYJ2R2V	1
R2	Vishay	Trim Pot 200Ω/500mW, Multi-Turn	T93YA470KT20	1
R3	Yageo	SMT Resistor 1kΩ/100mW, Size 0603	RC0603FR-071KL	1
R4	Yageo	SMT Resistor 200kΩ/100mW, Size 0603	RC0603FR-07200KL	1
K1	Tyco	2 Pin Header Connector 0.1" Pitch	640452-2	1

REVISION HISTORY

Date	Rev.	Comments
22-Apr-08	A	Initial Release

Copyrights, Trademarks and Patents

© Catalyst Semiconductor, Inc.

Trademarks and registered trademarks of Catalyst Semiconductor include each of the following:

Adaptive Analog™, Beyond Memory™, DPP™, EZDim™, LDD™, MiniPot™, Quad-Mode™ and Quantum Charge Programmable™

Catalyst Semiconductor has been issued U.S. and foreign patents and has patent applications pending that protect its products.

CATALYST SEMICONDUCTOR MAKES NO WARRANTY, REPRESENTATION OR GUARANTEE, EXPRESS OR IMPLIED, REGARDING THE SUITABILITY OF ITS PRODUCTS FOR ANY PARTICULAR PURPOSE, NOR THAT THE USE OF ITS PRODUCTS WILL NOT INFRINGE ITS INTELLECTUAL PROPERTY RIGHTS OR THE RIGHTS OF THIRD PARTIES WITH RESPECT TO ANY PARTICULAR USE OR APPLICATION AND SPECIFICALLY DISCLAIMS ANY AND ALL LIABILITY ARISING OUT OF ANY SUCH USE OR APPLICATION, INCLUDING BUT NOT LIMITED TO, CONSEQUENTIAL OR INCIDENTAL DAMAGES.

Catalyst Semiconductor products are not designed, intended, or authorized for use as components in systems intended for surgical implant into the body, or other applications intended to support or sustain life, or for any other application in which the failure of the Catalyst Semiconductor product could create a situation where personal injury or death may occur.

Catalyst Semiconductor reserves the right to make changes to or discontinue any product or service described herein without notice. Products with data sheets labeled "Advance Information" or "Preliminary" and other products described herein may not be in production or offered for sale.

Catalyst Semiconductor advises customers to obtain the current version of the relevant product information before placing orders. Circuit diagrams illustrate typical semiconductor applications and may not be complete.



Catalyst Semiconductor, Inc.
Corporate Headquarters
2975 Stender Way
Santa Clara, CA 95054
Phone: 408.542.1000
Fax: 408.542.1200
www.catsemi.com

Document No: MD-6060
Revision: A
Issue date: 22-Apr-08