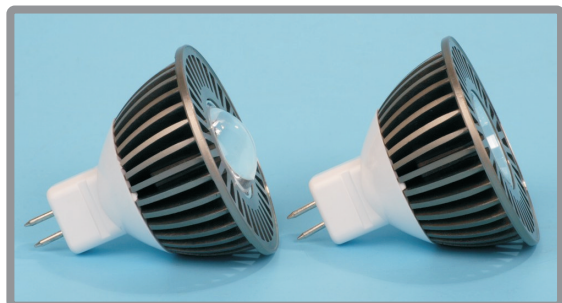


## THE TRISTAR® SERIES

New!

Introducing the TRISTAR®-R3



TRISTAR®-R3-WHT

### ELECTRONIC SPECIFICATIONS

PARAMETERS	TRISTAR-R3
<b>ELECTRICAL:</b>	
Power Supply Voltage (Typ.)	10~17 Vdc/Vac
Power Supply Current	<500mA
Power Consumption	< 5W
<b>OPTICAL:</b>	
Operating Life	>35,000 hrs.
Beam Angle (without lens)	38.9°
Beam Angle (with lens)	47.5°
<b>ENVIRONMENT:</b>	
Operation Temperature	-20~50°C
Storage Temperature	-40~60°C
Operation Humidity	10~90%

Color	Minimum Photometric Flux (lm)	Maximum Photometric Flux (lm)	Color Temperature
Warm White	150	170	3100k
Daylight White	155	175	5500k
Cool White	160	180	6500k

Note: 10~17VDC power supplies are strongly recommended.  
Compatibility of the LED lamps with 12VAC electronic transformers cannot be guaranteed.

REV: 20080919

## TRISTAR®-R3-WHT 5W LED Lamps

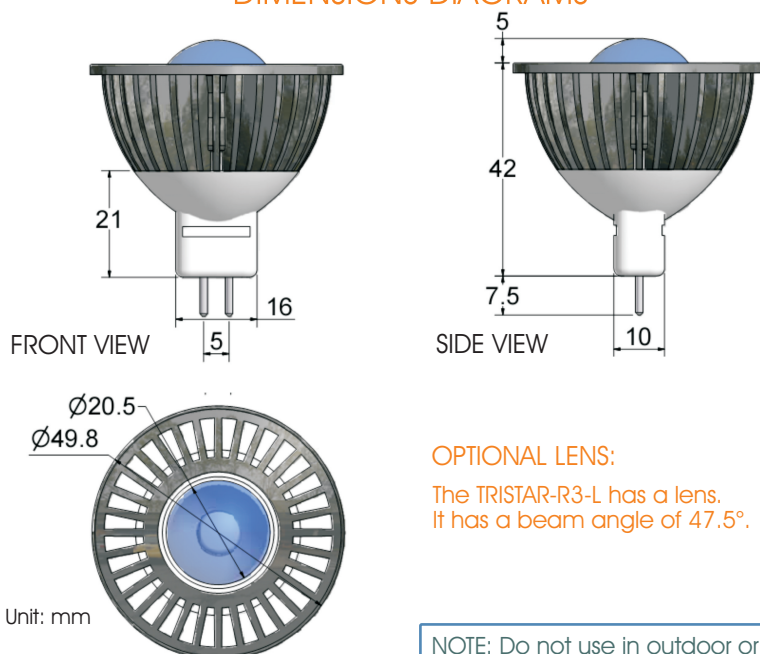
TriStar®-R3-WHT 5 watt LED lamps, with a standard MR16 base, are available in cool white, daylight white and warm white. It has the same LEDs and same lumen output as the 5W TRISTAR®-MR16-WHT LED lamps.

### TRISTAR®-R3-WHT

#### Features

- High power 5W LED
- High luminous intensity output
- Min. 70% lumen maintenance after 35,000 hours
- Higher energy efficiency than incandescent and halogen lamps
- Cool beam (no UV or thermal radiation)

### DIMENSIONS DIAGRAMS



#### OPTIONAL LENS:

The TRISTAR-R3-L has a lens.  
It has a beam angle of 47.5°.

NOTE: Do not use in outdoor or wet/humid areas or in totally enclosed fixtures.

ColorStars Group

#### Taiwan Operations:

##### Color Stars, Inc.

10F, No. 566 Jung Jeng Rd. Sindian City  
Taipei County 231, Taiwan, R.O.C.

Tel: +886-2-8667-6600 Fax: +886-2-8667-1400

Email: sales@colorstars.com Website: www.colorstars.com

#### Headquarters:

##### ColorStars Group

300 Center Ave., Suite 202  
Bay City, MI 48708 USA

Tel: 989-509-5924 Fax: 989-509-5924

Email: sales@colorstars.com Website: www.colorstars.com