

Picturesque light and  
colour effects

# GLOBIX

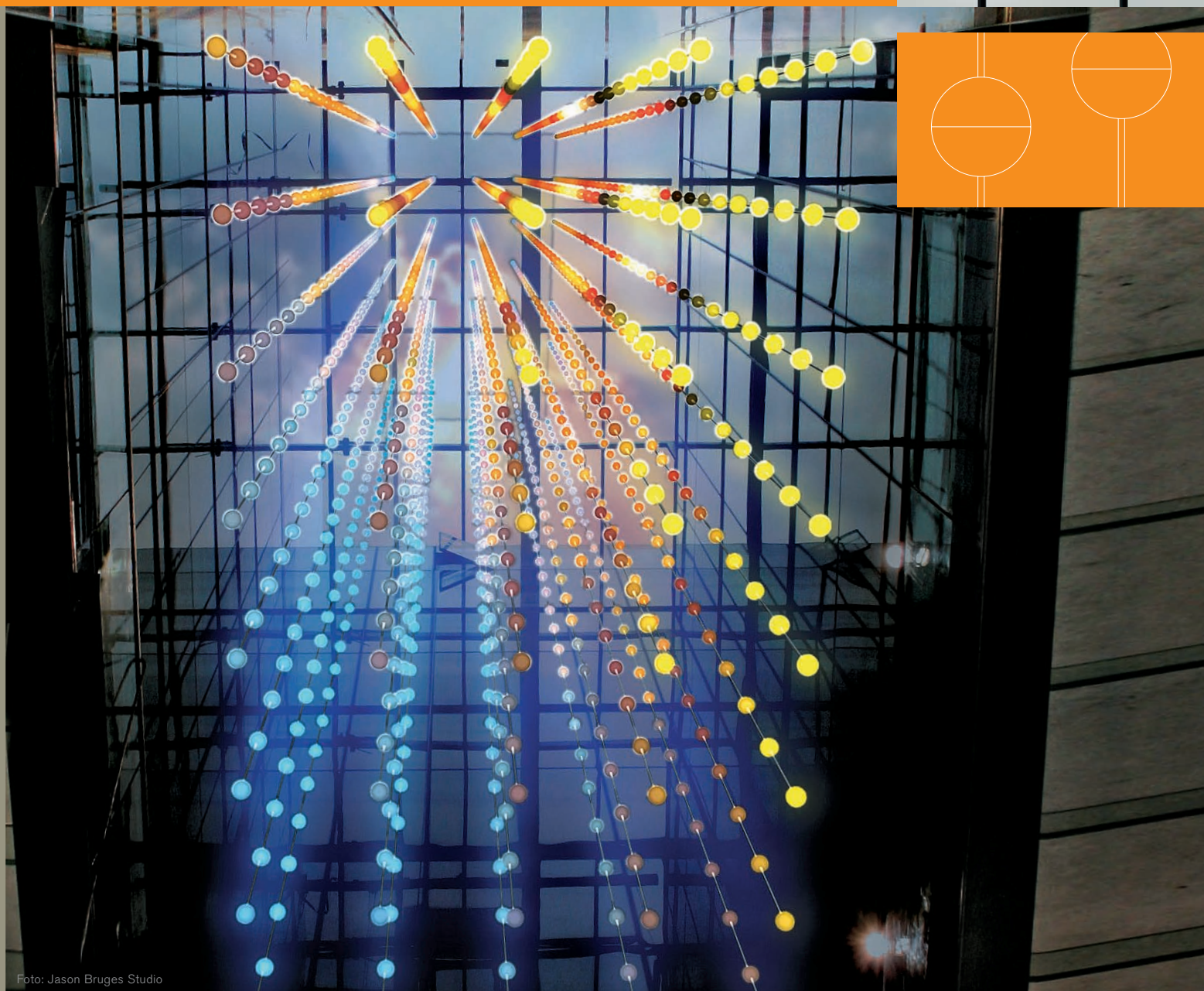


Foto: Jason Bruges Studio

LEDON

# GLOBIX



LED module in the shape of a dodecahedron

## GLOBE

### Product specifications

Colour range	RGB
Light sources	Low-power LEDs
Housing / materials	PC
	2-layer flex board (Capton), folded to form a dodecahedron (see graphic), 50 mm diameter
Dimensions:	120 mm diameter
Standards	CE

### Data specifications

Protocol	SPI protocol (48 bits per globe)
Interface	Data in / out

### Electrical specifications

Supply voltage	24V DC
Power consumption	Max. 4.8W
Safety class	Class 3 (SELV)
Protection	Overcurrent (irreversible), overvoltage (reversible)

### Environmental specifications

Temperature range	0°C to +40°C
Protection rating	IP40

## CHAIN

### Product specifications

Housing / materials	PC
Standards	CE

### Electrical specifications

Supply voltage	24V DC, max. 5A
Power consumption	120W
Safety class	Class 3 (SELV)
Current supply	5A
Power supply	25V
Interface to SCU	Power supply and data combined in one cable

### Environmental specifications

Temperature range	0°C to +40°C
Protection rating	IP40
Shows	The self-test mode is immediately started as soon as the unit is switched on (only if connected to SCU); various shows only possible if connected to VCU
Minimum bending radius	51 mm

Lighting poetry in motion



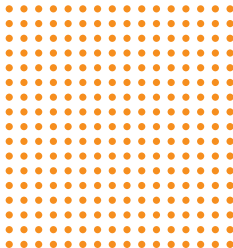
Inner globe core

Soft lighting

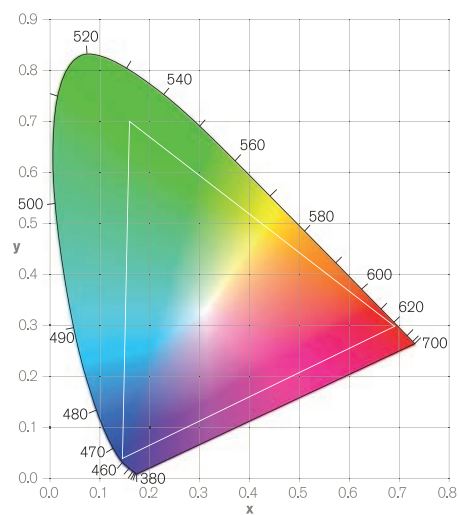
**The lighting globe for effects and colour is poetry in motion.**

GLOBIX can be used as an individual lighting component or as a multi-dimensional chandelier on ceilings and walls. The opal white light globe has a diameter of 120 mm and sophisticated inner workings. A total of 24 RGB LEDs are arranged uniformly over 12 surfaces to create the three-dimensional core.

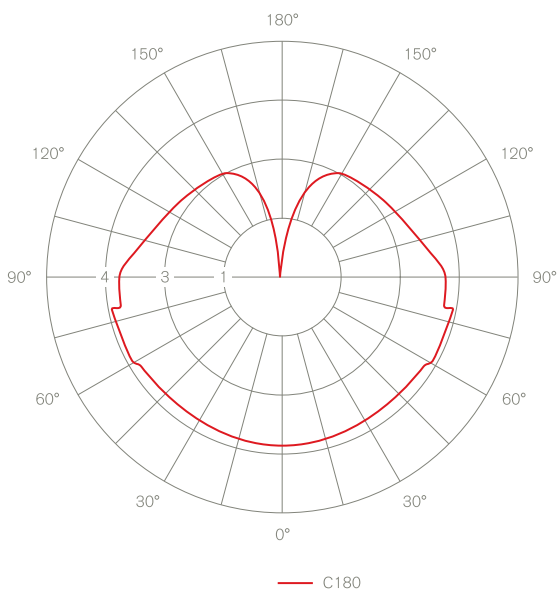
Eight-bit resolution of the primary colours of red, green and blue opens up a huge spectrum of 16 million colours. Each globe can be individually controlled via specially developed software. Changes can be made in real time, creating a small universe of light and colours from this spatial LED installation.



Typical gamut



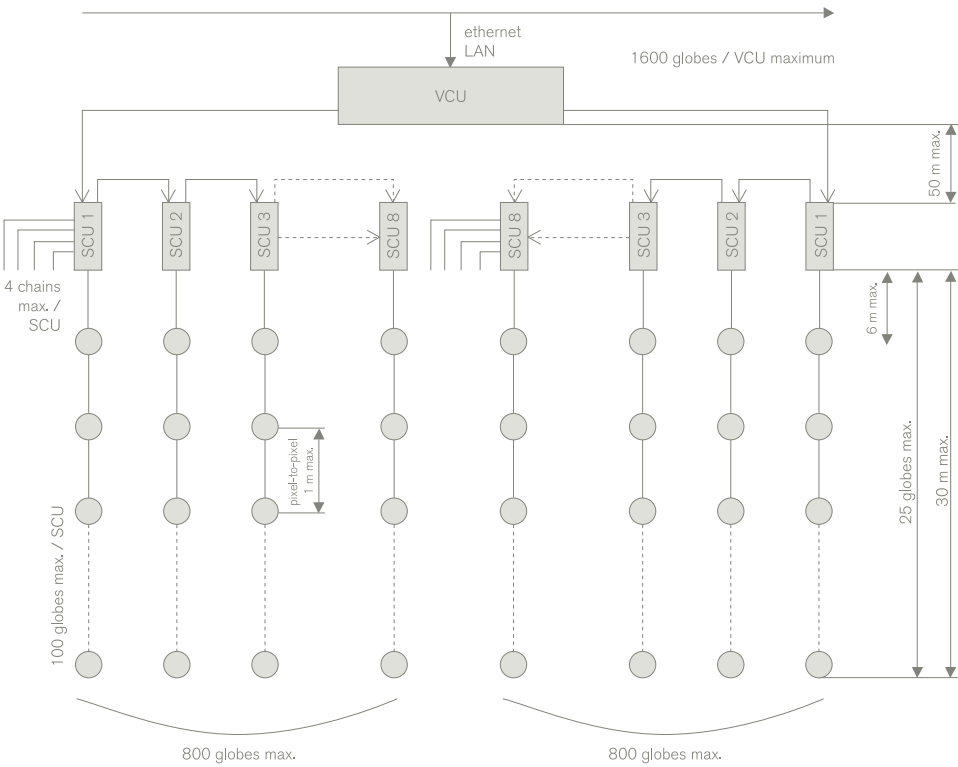
Light distribution



Optical specifications

Light sources	24 x 3-in-1 RGB LEDs
Light distributions	see diagram
Typical wavelength	red: 632 nm green: 518 nm blue: 468 nm
Luminous flux	RGB: 50 lm (100%)

Data



Segment Control Unit (SCU)

Product specifications

Housing / materials	Aluminium housing
Dimensions	Length x width x height: 600 x 310 x 110 mm
Standards	CE

Data specifications

Data in (from VCU)	RS485 video protocol
Data out (globe)	SPI protocol (48 bits per globe)
Max. controllable number of pixels	100 globes, max. number of globes per chain: 25
Max. number of LED chains	4

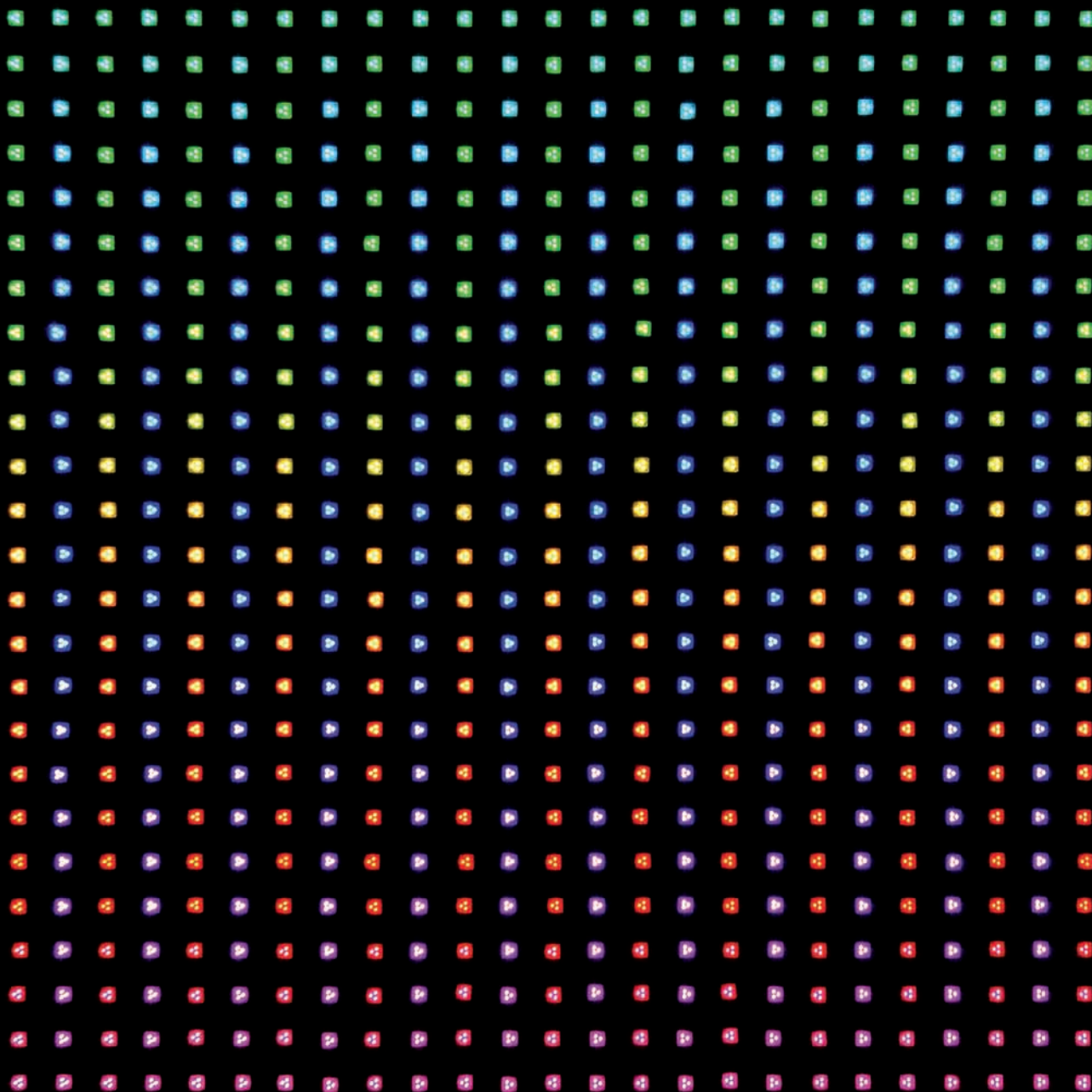
Electrical specifications

Supply voltage	230V AC, 50 Hz, current draw: 4A
Power consumption	920W, PF > =0.95
Safety class	Class 1
Protection	Overcurrent (irreversible), overtemperature (reversible)
Max. output power	480W (4 outputs, max. 120W per output)
Output voltage / tolerance	24V +/- 2%
Output current	Max. 5A per output
Connections	PG cable glands, socket for globe chains, additional plug in the unit

Environmental specifications

Temperature range	0°C to +40°C
Protection rating	IP65



**Warranty**

The Ledon warranty conditions shall apply.

Technical data correct at time of going to press. Subject to change without notice.

Art.-Nr. 70422514-UK 11/08 © by Ledon

**Ledon Lighting GmbH**

Millennium Park 2  
6890 Lustenau, Austria

T +43 (0) 5572 3836-0  
F +43 (0) 5572 3836-3030  
[info@ledonlighting.com](mailto:info@ledonlighting.com)  
[www.ledonlighting.com](http://www.ledonlighting.com)