

DI-186 Design Idea

LinkSwitch-II

High Efficiency, Low Cost, Non-Isolated 350 mA, 12 V LED Driver

Application	Device	Power Output	Input Voltage	Output Voltage	Topology
LED Driver	LNK605DG	4.2 W	85 – 265 VAC	12 V	Tapped Buck

Design Highlights

- Accurate primary-side constant voltage, constant current (CV/CC) controller eliminates optocoupler and all secondary side CV/CC control circuitry
 - No current-sense resistors for maximized efficiency
 - Low part-count solution (16 components) for lower cost
- Auto-restart for output short circuit and open-loop protection
 - Highly Energy Efficient
 - Full Load efficiency >80% over entire input voltage range
 - No-load consumption <200 mW at 265 VAC
 - Easy compliance to EN55015 and CISPR-22 Class B EMI standards
 - Meets ENERGY STAR requirements for solid state lighting (SSL) luminaries
 - Green package: halogen free and RoHS compliant

Operation

Figure 1 shows the schematic for a universal input 12 V, 350 mA AC/DC power supply for LED driver applications using the LinkSwitch-II product LNK605DG in a tapped-inductor non-isolated buck converter configuration.

A tapped buck topology is ideal for converters with a high ratio of voltage input to voltage output: It provides current multiplication

on the output, making it possible to use this variant of a buck topology in applications requiring output currents greater than twice the device current limit.

This topology lends itself to a smaller PCB size, a smaller inductor core size, and greater efficiency (80%, worst-case load) than an isolated flyback converter. EMI filtering is simpler due to less common-mode noise generation. This topology normally requires a clamp circuit on the primary side. However, by virtue of the 700 V MOSFET integrated to U1, the clamp circuitry is not necessary.

IC U1 consists of a power switching device (700 V MOSFET), an oscillator, a highly integrated CV/CC control engine, and startup and protection functions. The MOSFET gives sufficient voltage margin for universal input AC applications including line surges.

Diodes D3, D4, D5, and D6 rectify the AC input; then bulk storage capacitors C4 and C5 filter the rectified AC. Inductor L1 forms a pi (π) filter with capacitors C4 and C5 to attenuate differential-mode EMI noise. This configuration enables easy compliance to EMI standard EN55015 class B, with 10 dB of margin. Fusible, flameproof resistor RF1 provides catastrophic circuit failure protection.

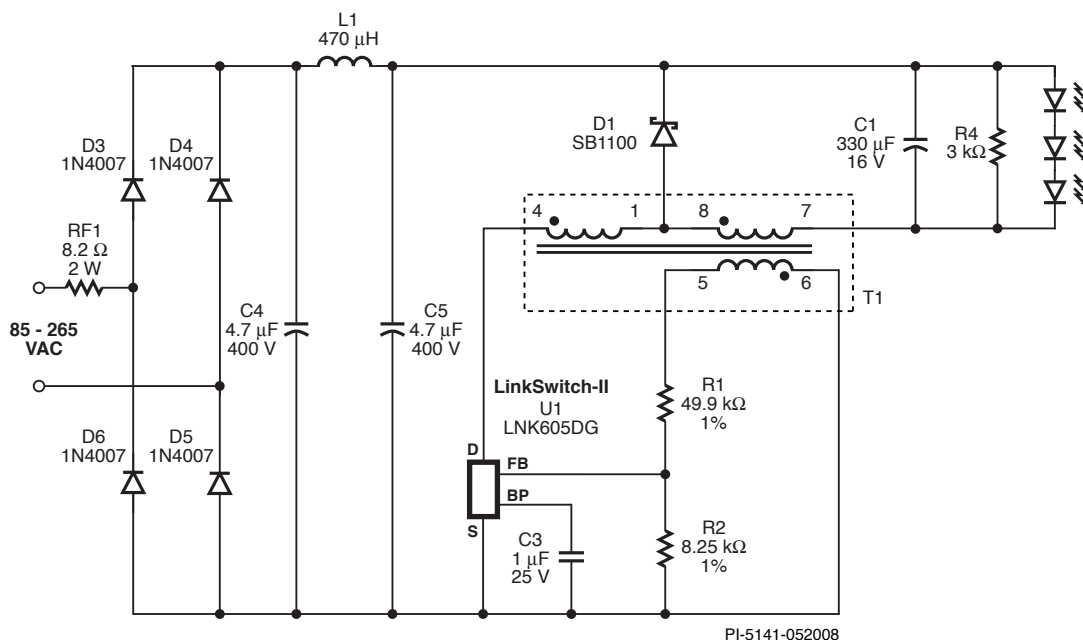


Figure 1. Schematic of a 4.2 W LED Driver Using LNK605DG.

When the switch within U1 turns on, current ramps up and flows through the load and the inductor. Capacitor C1 filters the load current, removing the switching component. Diode D1 does not conduct since it is reverse-biased. The current continues to ramp up until it reaches U1's current limit. Once the current reaches this limit, the switch turns off.

When the switch turns off, the energy stored in the inductor (T1) induces a current to flow in the output section: (Pin 8 - Pin 7). The current in the output winding steps up by a factor of 4.6 (the turns ratio), and flows from the output winding, through freewheeling diode D1, and to the load. The low value of leakage inductance (between the two sections of the inductor) removes the need for a clamp network to limit the peak drain voltage. Normally this would dissipate the leakage energy but in this design the inductor intra-winding and MOSFET capacitance (discharged each switching cycle) is sufficient.

The LEDs are driven with constant current so, U1 operates in CC mode during normal operation. In CC mode, the switching frequency is adjusted as a function of the output voltage (sensed across winding pins 5 and 6) to keep the load current constant.

The CV feature provides inherent output over-voltage protection in case any LEDs fail open circuit or the load gets disconnected.

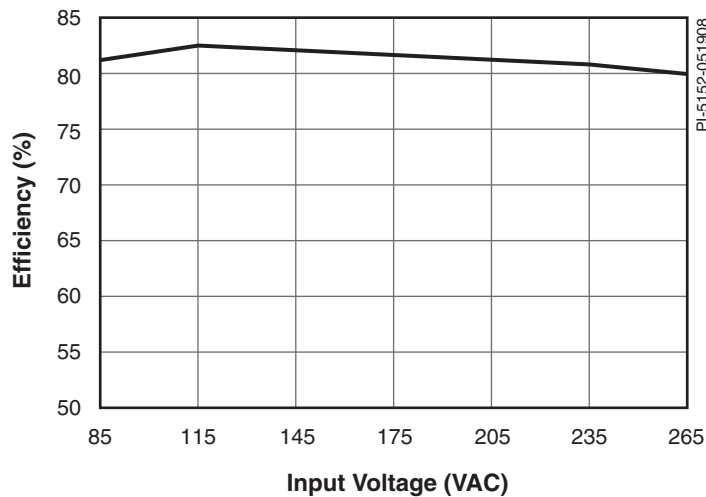


Figure 2. Full Load Efficiency Over Input Voltage.

Key Design Points

- T1 has a turns ratio (4.6) to ensure this circuit operates in discontinuous mode (DCM) at low line (85 VAC), and D1 has a conduction time at least 4.5 μ s.
- Feedback resistors R1 and R2 have 1% tolerance values for tightly centering both the nominal output voltage and the CC regulation threshold.
- RF1 acts as a fuse: Ensure it has a rating to withstand instantaneous dissipation when the supply is first connected to the AC. Use a wire wound or oversized metal-film resistor.
- Preload resistor R4 maintains the output voltage under fault conditions such as a disconnected load.

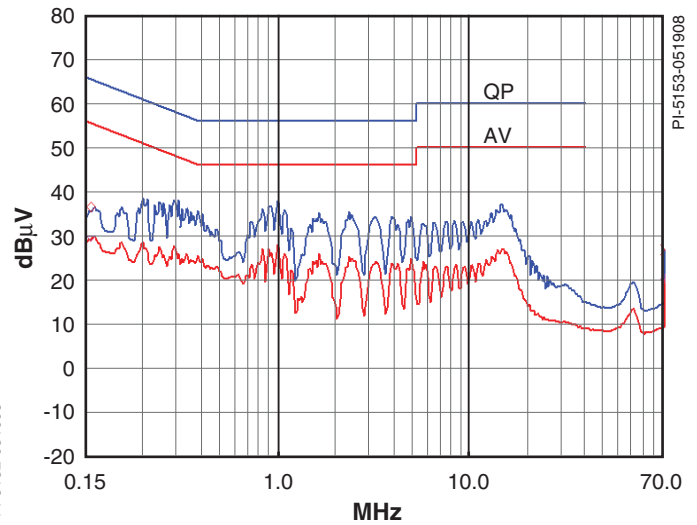


Figure 3. Conducted EMI, 230 VAC Input, EN55015 B Limits Shown, Output RTN Floating.

Inductor Parameters

Core Material	PC44, gapped for AL of 86.3 nH/t ²
Bobbin	Horizontal, 8 pins, EE10
Winding Details	Main Inductor: 97T, 34 AWG Tap Inductor: 27T, 27 AWG Feedback: 27T, 33 AWG
Winding Order	Main Inductor (4-1), Tap Inductor (8-7), Feedback (6-5)
Total Inductance	1.32 mH, \pm 10%
Resonant Frequency	1.1 MHz (minimum)
Leakage Inductance	N/A

Table 1. Transformer Parameters. (AWG = American Wire Gauge, TIW = Triple Insulated Wire)

Power Integrations
5245 Hellyer Avenue
San Jose, CA 95138, USA.
Main: +1 408-414-9200
Customer Service
Phone: +1-408-414-9665
Fax: +1-408-414-9765
Email: usasales@powerint.com

On the Web
www.powerint.com

Power Integrations reserves the right to make changes to its products at any time to improve reliability or manufacturability. Power Integrations does not assume any liability arising from the use of any device or circuit described herein. POWER INTEGRATIONS MAKES NO WARRANTY HEREIN AND SPECIFICALLY DISCLAIMS ALL WARRANTIES INCLUDING, WITHOUT LIMITATION, THE IMPLIED WARRANTIES OF MERCHANTABILITY, FITNESS FOR A PARTICULAR PURPOSE, AND NON-INFRINGEMENT OF THIRD PARTY RIGHTS. The products and applications illustrated herein (transformer construction and circuits external to the products) may be covered by one or more U.S. and foreign patents or potentially by pending U.S. and foreign patent applications assigned to Power Integrations. A complete list of Power Integrations' patents may be found at www.powerint.com. Power Integrations grants its customers a license under certain patent rights as set forth at <http://www.powerint.com/ip.htm>.

The PI logo, TOPSwitch, TinySwitch, LinkSwitch, DPA-Switch, PeakSwitch, EcoSmart, Clampless, E-Shield, Filterfuse, StackFET, PI Expert and PI FACTS are trademarks of Power Integrations, Inc. Other trademarks are property of their respective companies. ©2008, Power Integrations, Inc.