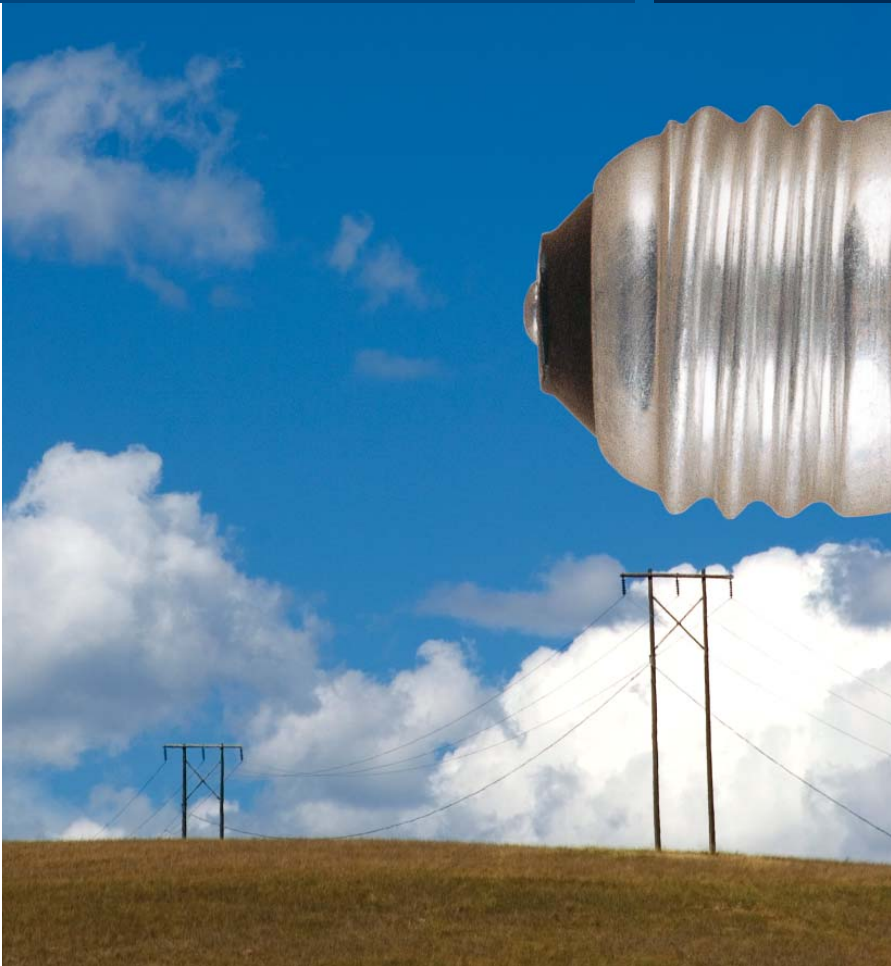


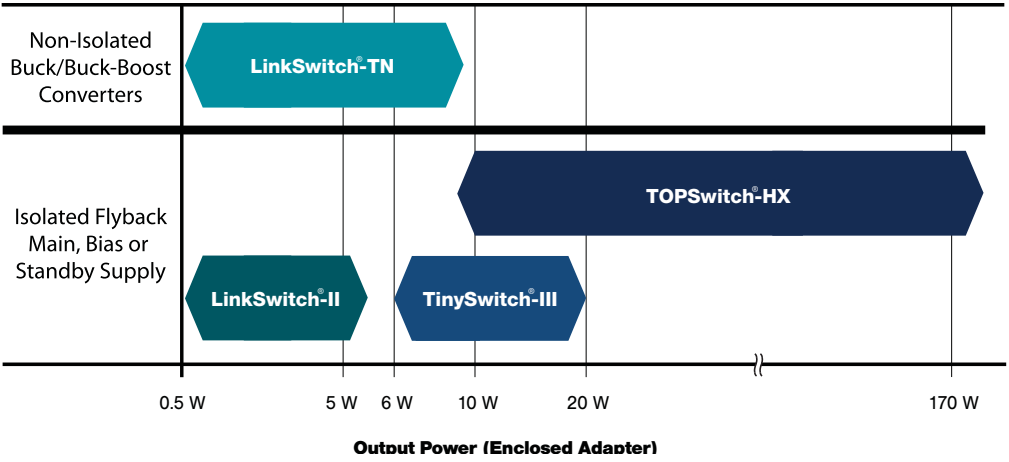
Innovation in power conversion

Product Selector Guide LED Driver Products

November 2008



Product Selector Guide



IC Product Tables and Design Examples

Very Low Power AC-DC, Non-Isolated Linear/Passive Supply Replacement (≤ 360 mA)

Product ¹	Output Current ¹		Output Current ¹	
	MDCM ²	CCM ³	MDCM ²	CCM ³
LinkSwitch-TN	230 VAC \pm 15%		85-265 VAC	
LNK302 PN/GN/DN	63 mA	80 mA	63 mA	80 mA
LNK304 PN/GN/DN	120 mA	170 mA	120 mA	170 mA
LNK305 PN/GN/DN	175 mA	280 mA	175 mA	280 mA
LNK306 PN/GN/DN	225 mA	360 mA	225 mA	360 mA

Additional Features:

- 700 V Internal MOSFET Rating
- Self-Powered
- ON/OFF Control
- Hysteretic Thermal Shutdown
- Power Limiting
- Frequency Jitter Reduces EMI
- EcoSmart[®] Low Standby/No-load Power Consumption

Notes:

1. Typical output current in a non-isolated buck converter. Output power capability depends on respective output voltage. See Key Applications Considerations section for complete description of assumptions, including fully discontinuous conduction mode (DCM) operation.
2. Mostly discontinuous conduction mode.
3. Continuous conduction mode.
4. Packages: PN: DIP-8B, GN: SMD-8B, DN: SO-8C.

Very Low Power AC-DC Power Conversion (Up to 6.1 W)

Product ^{2,4}	Continuous Output Power		Continuous Output Power	
	Adapter ¹	Open Frame ²	Adapter ¹	Open Frame ²
LinkSwitch-II	230 VAC \pm 15%		85-265 VAC	
LNK603/613 PG/DG	2.5 W	3.3 W	2.5 W	3.3 W
LNK604/614 PG/DG	3.5 W	4.1 W	3.5 W	4.1 W
LNK605/615 PG/DG	4.5 W	5.1 W	4.5 W	5.1 W
LNK606/616 PG/GG	5.5 W	6.1 W	5.5 W	6.1 W

Additional Features:

- 700 V Internal MOSFET Rating
- Self-Powered
- ON/OFF Control
- Hysteretic Overtemperature Protection
- Power Limiting
- Frequency Jitter Reduces EMI
- EcoSmart[®] Low Standby/No-load Power Consumption

Notes:

1. Minimum continuous power in a typical non-ventilated enclosed adapter measured at 50 °C ambient.
2. Minimum practical continuous power in an open frame design with adequate heat sinking, measured at 50 °C ambient.
4. Packages: PG: DIP-8C, GG: SMD-8C, DG: SO-8C.

Low Power AC-DC Power Conversion (Up to 36.5 W)

Product ³	Continuous Output Power		Continuous Output Power	
	Adapter ¹	Open Frame ²	Adapter ¹	Open Frame ²
TinySwitch-III	230 VAC \pm 15%		85-265 VAC	
TNY274 PN/GN	6 W	11 W	5 W	8.5 W
TNY275 PN/GN	8.5 W	15 W	6 W	11.5 W
TNY276 PN/GN	10 W	19 W	7 W	15 W
TNY277 PN/GN	13 W	23.5 W	8 W	18 W
TNY278 PN/GN	16 W	28 W	10 W	21.5 W
TNY279 PN/GN	18 W	32 W	12 W	25 W
TNY280 PN/GN	20 W	36.5 W	14 W	28.5 W

Additional Features:

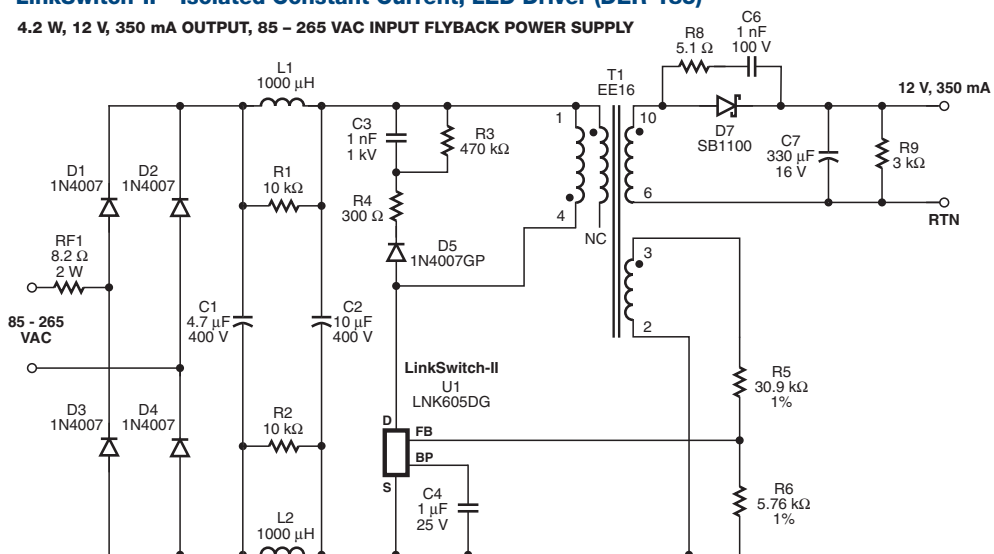
- 700 V Internal MOSFET Rating
- Self-Powered
- Hysteretic Overtemperature Protection
- Frequency Jitter Reduces EMI
- EcoSmart[®] Low Standby/No-load Power Consumption
- On-Time Extension
- Latching Output Overvoltage Protection
- Line Undervoltage (UV) Lockout
- Selectable Current Limit

Notes:

1. Minimum continuous power in a typical non-ventilated encased adapter with minimal heat sinking, measured at a device ambient of 50 °C.
2. Minimum continuous power in an open frame with adequate heat sinking. TinySwitch-III operates without bias winding.
3. Packages: PN: DIP-8C, GN: SMD-8C. Lead-free package options are available for P and G packages.

LinkSwitch-II – Isolated Constant Current, LED Driver (DER-185)

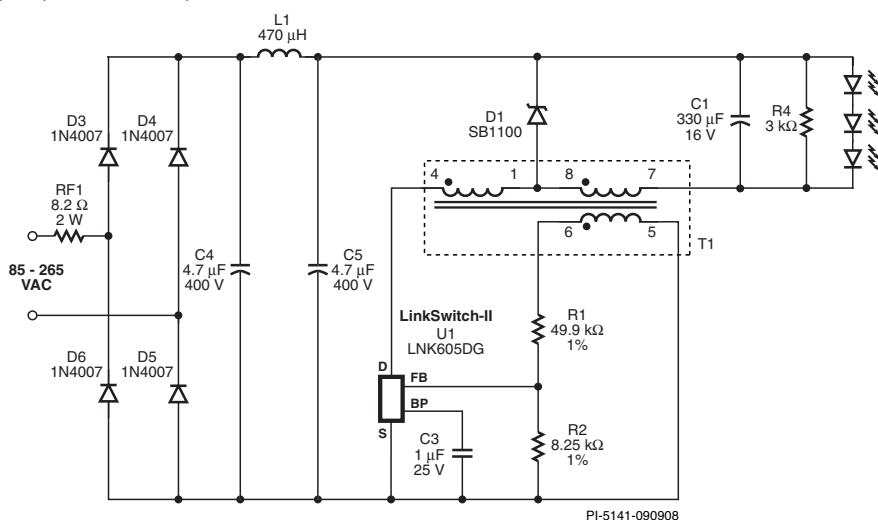
4.2 W, 12 V, 350 mA OUTPUT, 85 – 265 VAC INPUT FLYBACK POWER SUPPLY



PI-5117-042308

LinkSwitch-II – Tapped Buck LED Driver (DER-186)

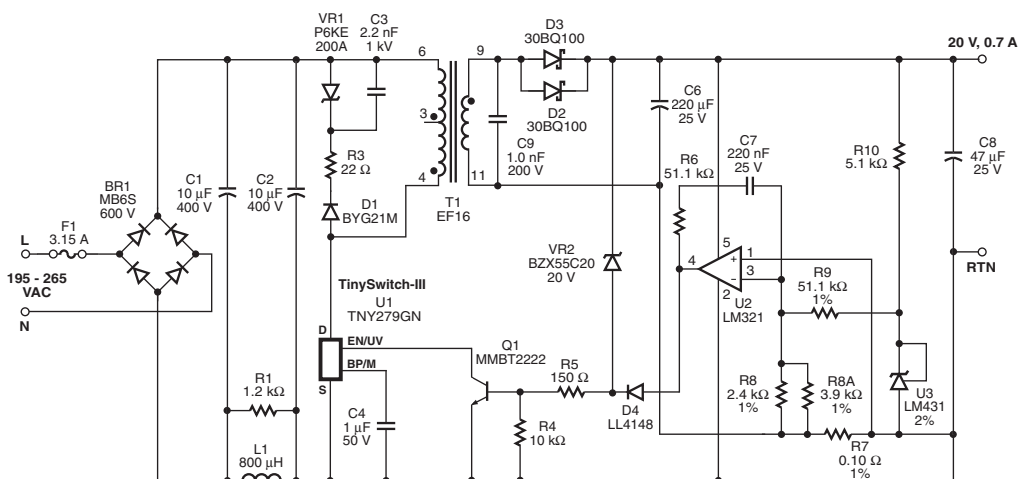
4.2 W, 12 V, 350 mA OUTPUT, 85 – 265 VAC INPUT TAPPED BUCK CONVERTER



PI-5141-090908

TinySwitch-III – Non Isolated, Constant Current High Efficiency LED Driver (DER-173)

14 W, 20 V, 0.7 A OUTPUT, 195 – 265 VAC INPUT FLYBACK POWER SUPPLY



PI-4980-040708

