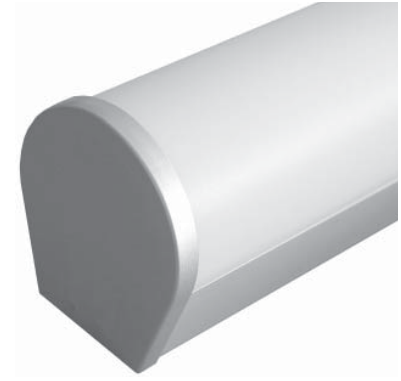
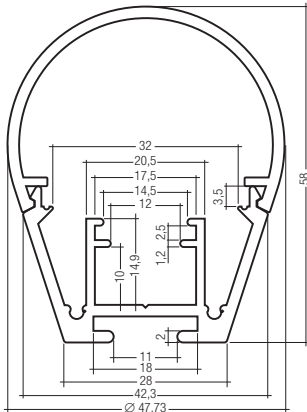


**TALEX(profile Z203
Mounting profile**

RoHS



TALEXprofile Z203 with cover and end cap

- versatile mounting profile for large format contour or luminaire conception
- suited for TALEX strips (in combination with TALEX(profile Z204) and TALEXspaceLED
- wide accessory range
 - covers
 - insertion/cooling profile
 - end caps

TALEX

type	article number	material	colour	dimensions HxWxL mm	weight/piece kg	packing unit ①
Z203 mounting profile	24138967	aluminium	anodised nature	27 x 42.3 x 2,000	1.54	5

TALEX accessories ②

type	article number	material	colour	dimensions HxWxL mm	packing unit ①
Z204 insertion/cooling profile ③	24138850	aluminium	anodised nature	5 x 17.3 x 2,000	5
Cover white	24138971	PMMA	white	35.4 x 47.7 x 2,000	5
Cover frosted	24138972	PMMA	semi-transparent	35.4 x 47.7 x 2,000	5
Cover transparent	24138973	PMMA	transparent	35.4 x 47.7 x 2,000	5
End cap for TALEX(profile Z203	24138970	PMMA	metallic grey	61.5 x 52 x 6	10

① Delivery in packing units only.

② The cover may not be exposed to any mechanical stresses. If it is exposed to vibrations or wind the mounting plate can detach from the fixture. It must therefore be additionally secured.

③ Details see page 2.

④ Data are valid for applications with cover and end caps and with sufficient air circulation (convection). Compliance with the max. permissible temperature of the TALEX(module at the tc point (see data sheet) must be ensured in the thermally stable state. For further information on installation please refer to the brochure entitled "TALEX installation instructions".

Cooling properties:

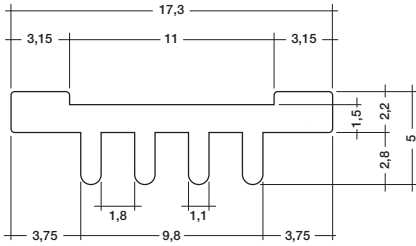
1 cm Z203 = 7 cm² surface

Recommended profile length in cm ④

ta °C	P110/111	P108	P118	P130/131	P211-2 350 mA	P211-2 700 mA
20	20	20	20	10	4	6
30	20	20	20	10	4	7
40	20	20	20	13.5	5	10
50	20	27	32	20	7	16

TALEXprofile Z204
Insertion/cooling profile

RoHS



- insertion for TALEXprofile Z202/203
- cooling profile for TALEX strips with a maximum width of 10 mm
- compact profile 5 x 17 mm

TALEX

Typ	article number	material	colour	dimensions HxWxL mm	weight/piece kg	packing unit ①
Z204 insertion/cooling profile	24138850	aluminium	anodised nature	2.2x17.3x2,000	0.22	5

① Delivery in packing units only.