



Inventec Appliances Corp.
英華達股份有限公司

DG12BT(FLY DS400)_Maintenance Instruction

Prepared by : Tan, Hong Yun

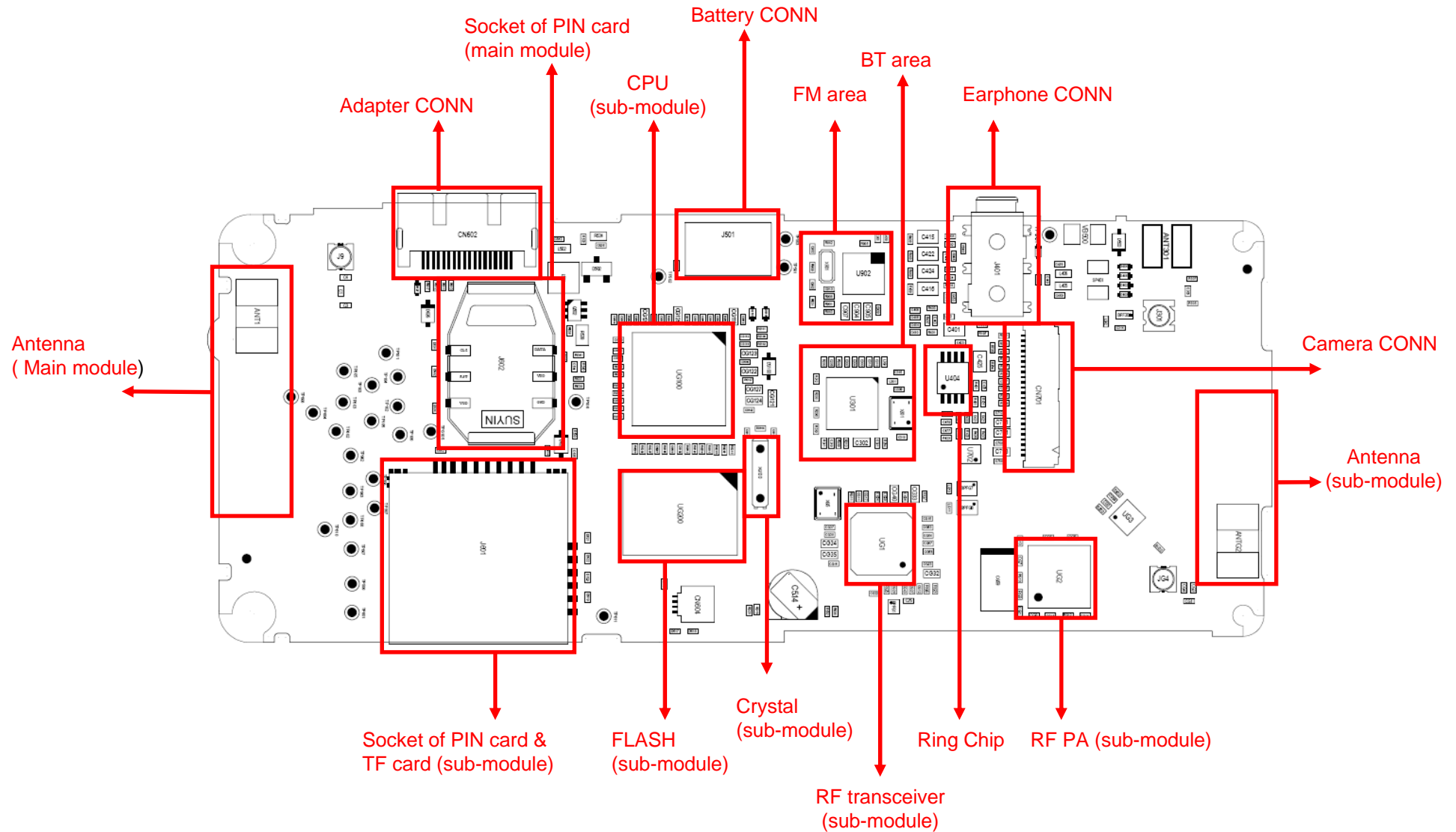
Approved by : Zhang, Guo-Pei

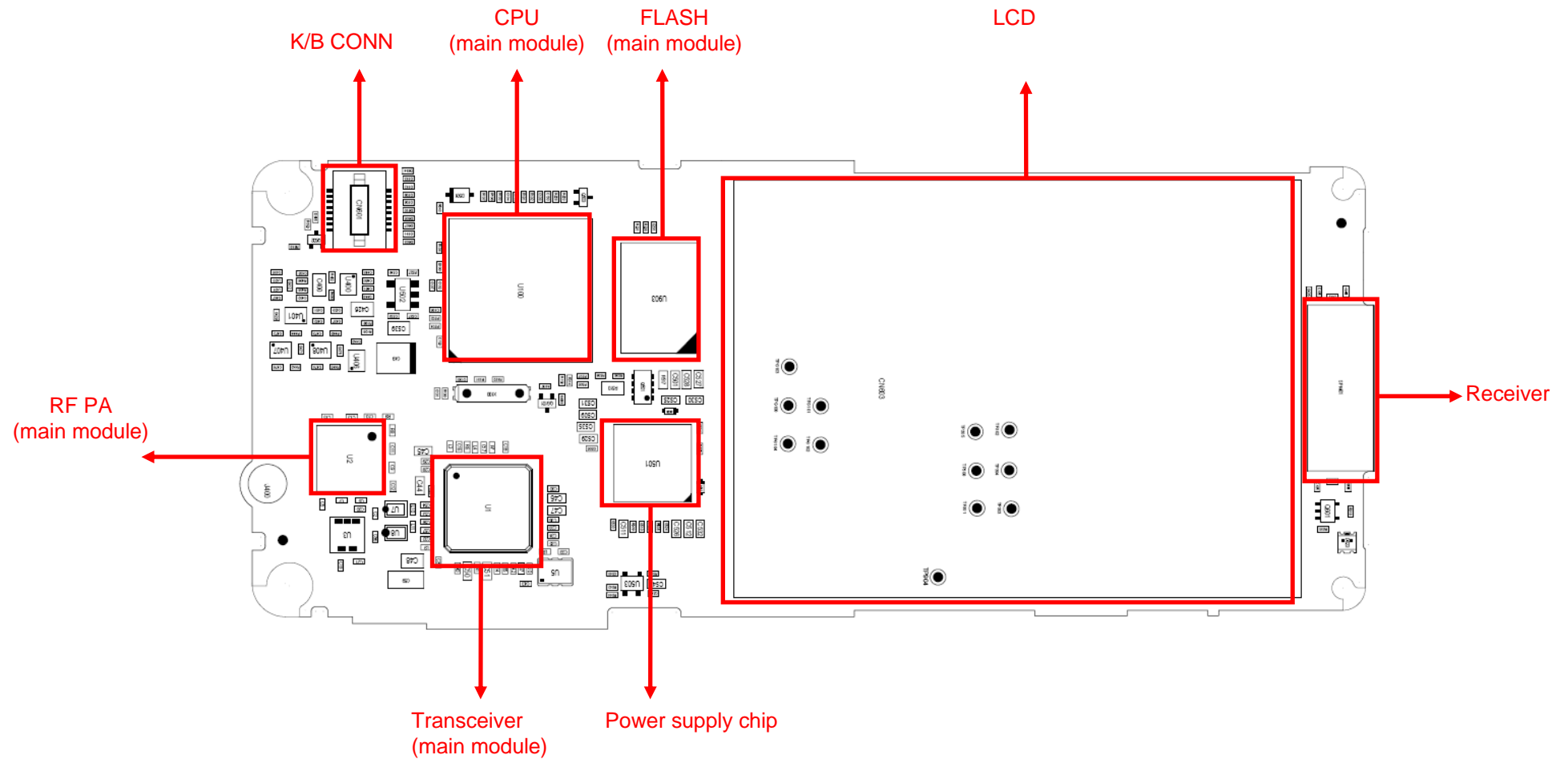
Date: 2008-07-12



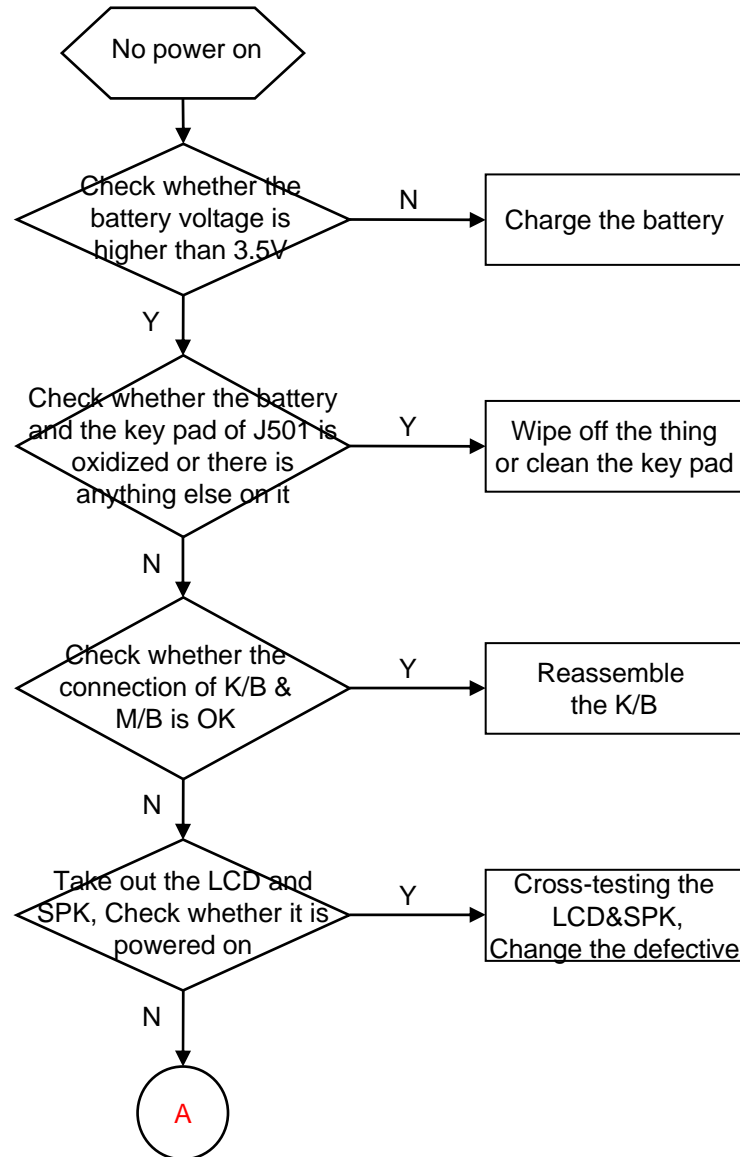
TABLE OF CONTENTS

- ❑ No power on
- ❑ No power on (sub-module)
- ❑ Shut off automatically
- ❑ Death halt
- ❑ No charge
- ❑ Quantity of electricity faulty detection
- ❑ No display
- ❑ LED NG (on the LCD)
- ❑ LED NG (on the keyboard)
- ❑ Key NG
- ❑ No ring
- ❑ No receiving voice
- ❑ No sending voice or the voice is small
- ❑ No vibration
- ❑ Card inefficacy ((Main module)
- ❑ Card inefficacy ((Sub-module)
- ❑ Camera inefficacy
- ❑ Bluetooth inefficacy
- ❑ TF card inefficacy





➤ No power on



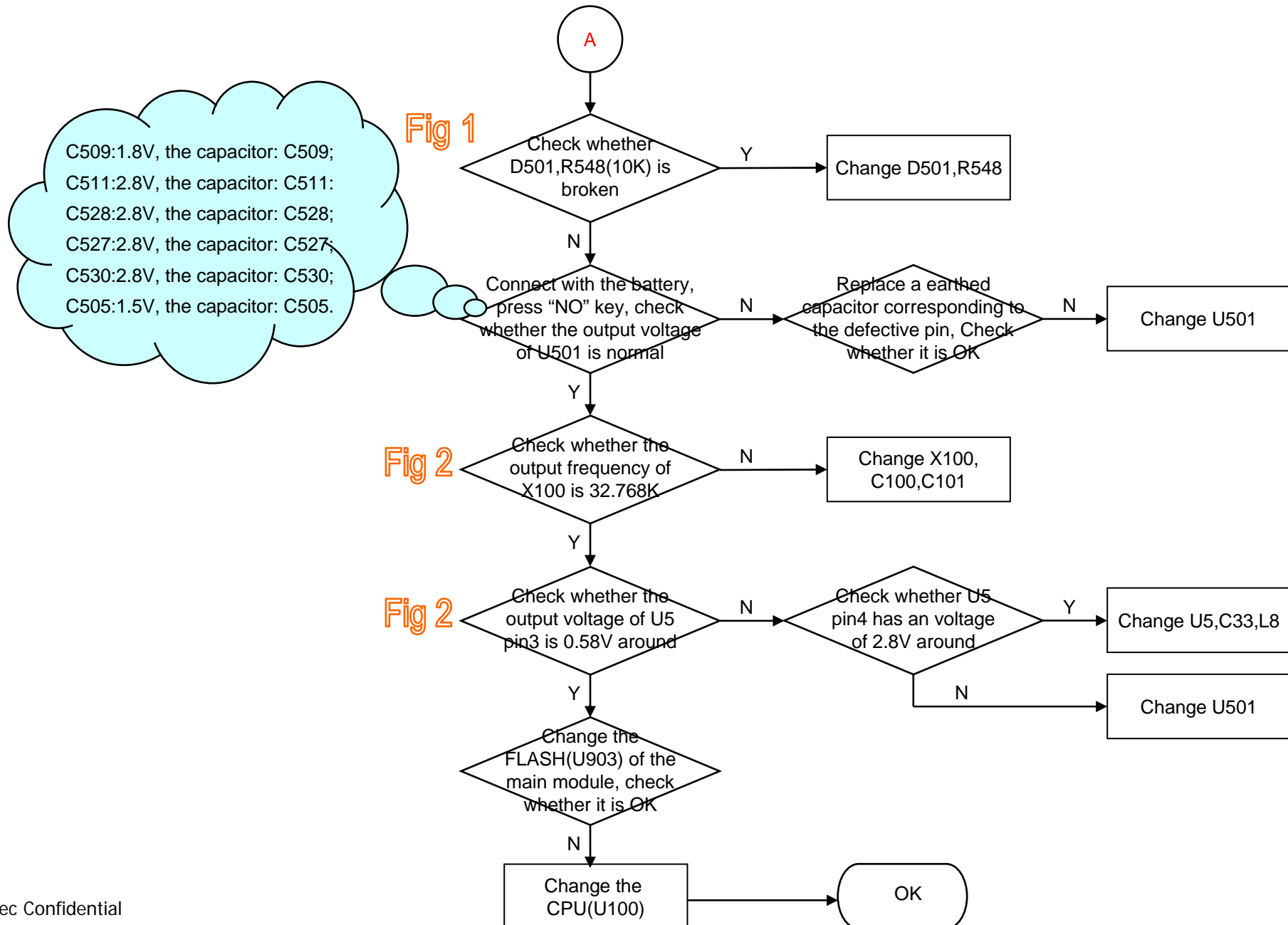


Fig 1

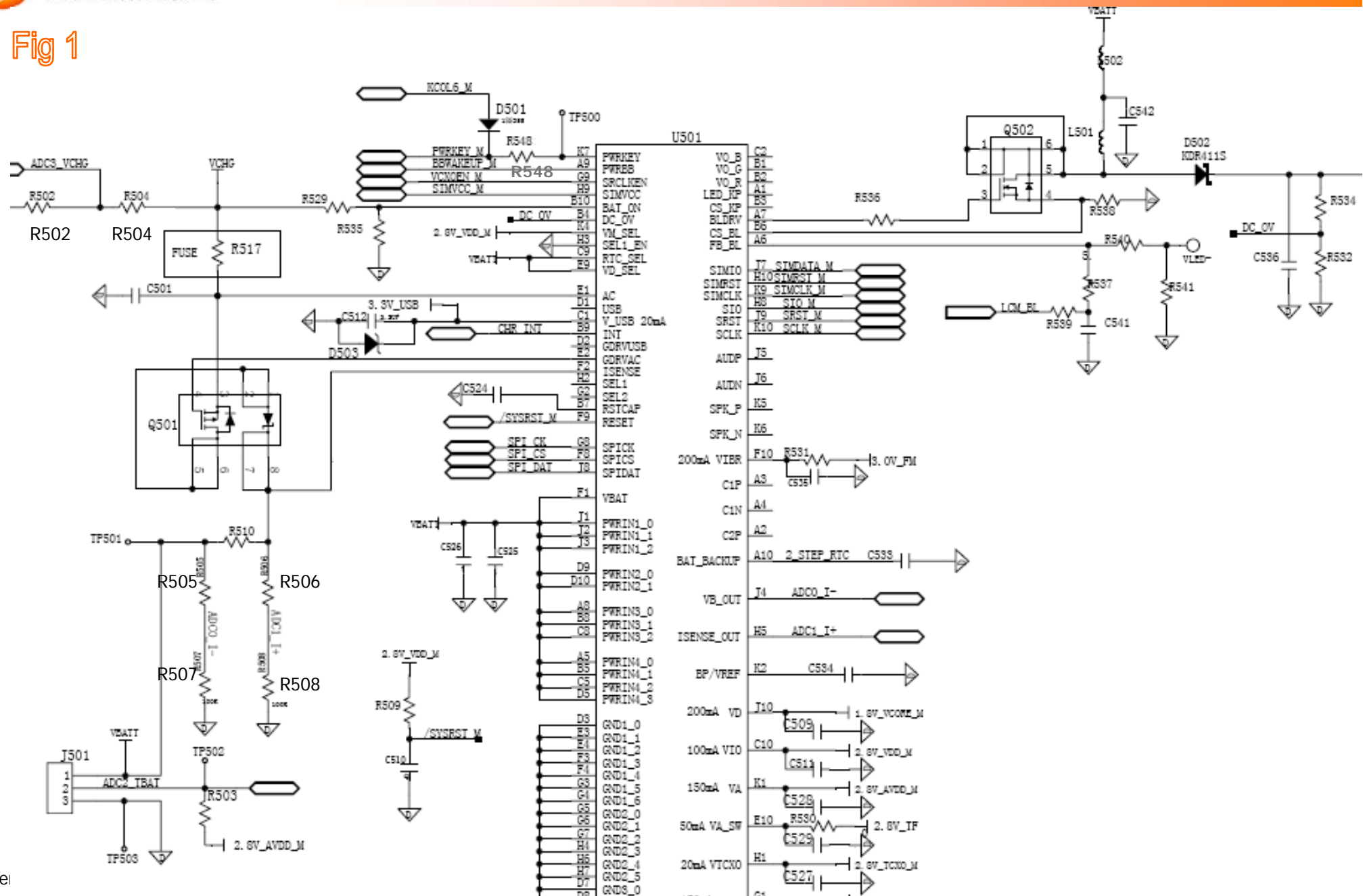
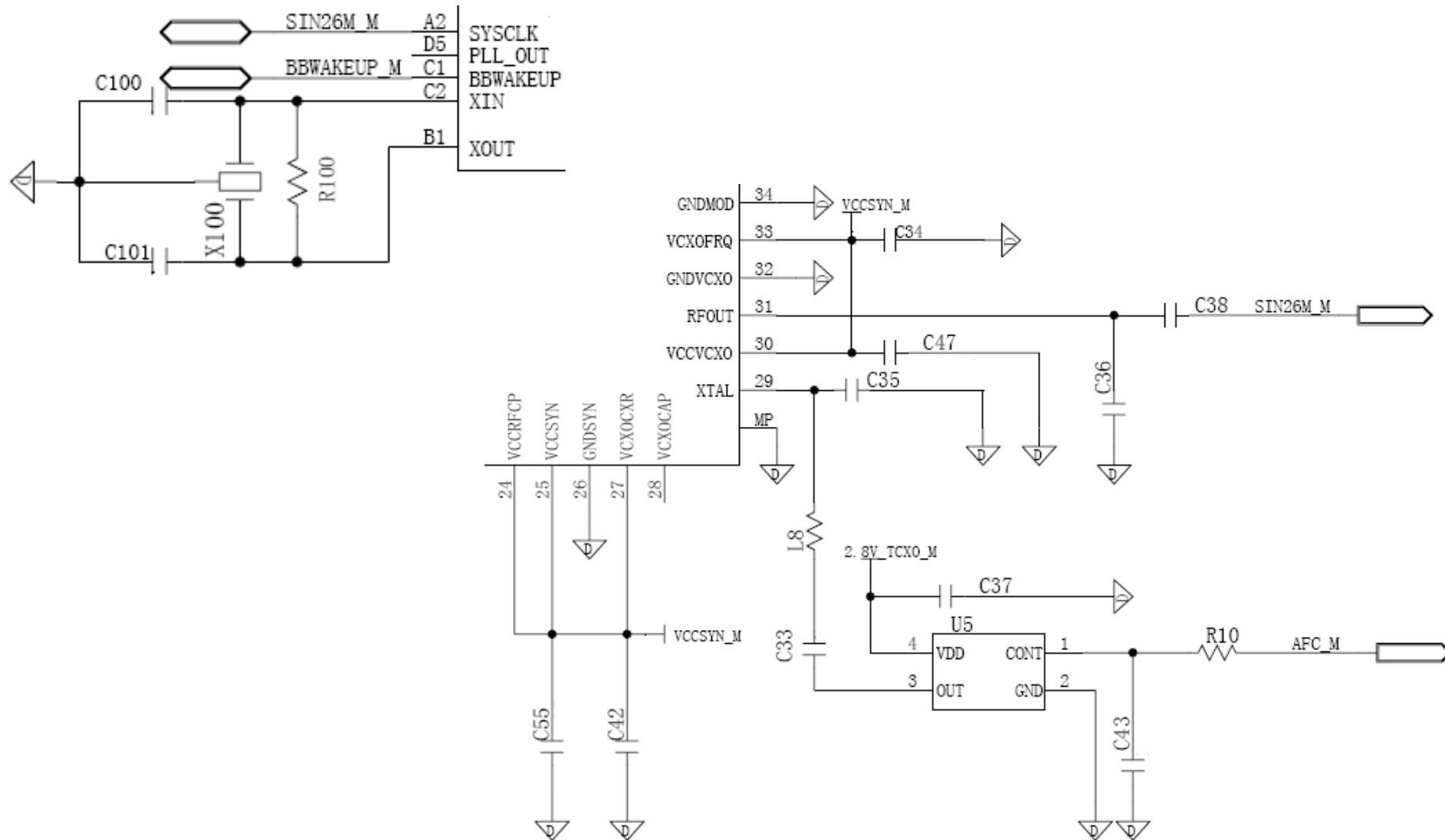
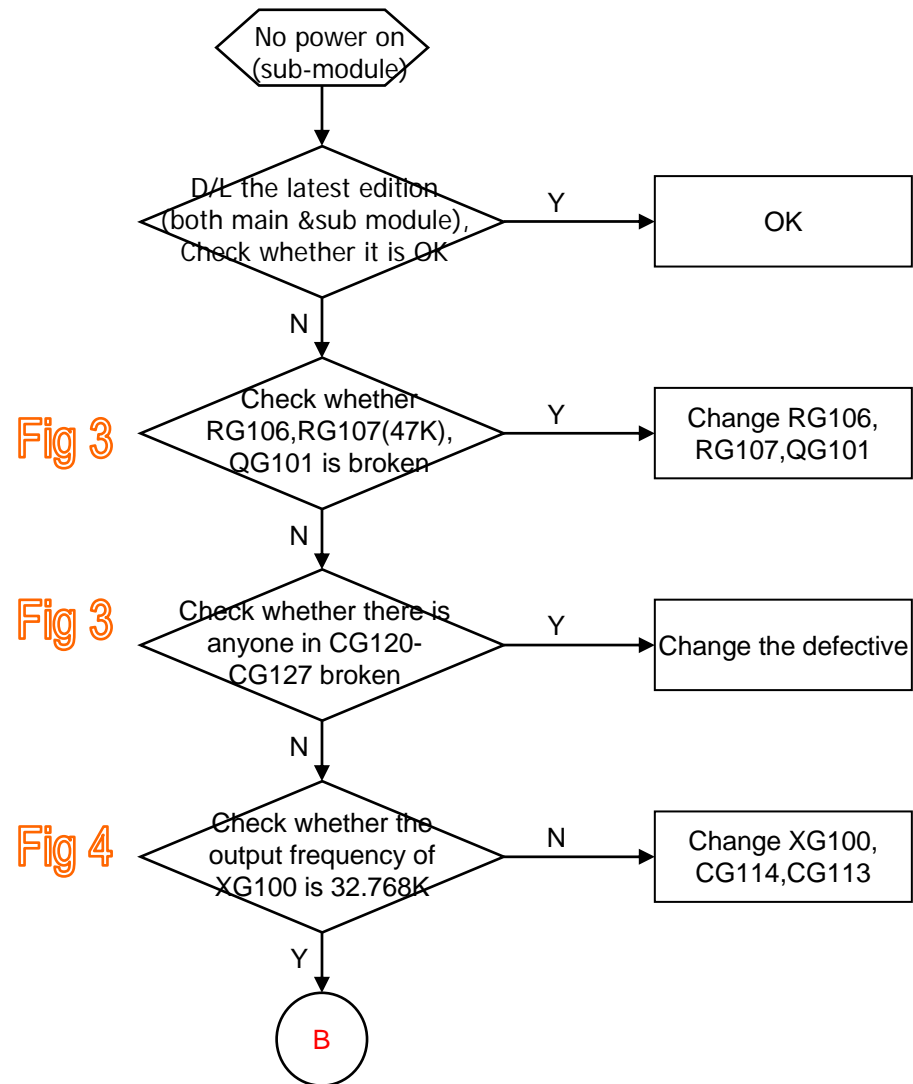


Fig 2





➤ No power on (sub-module)



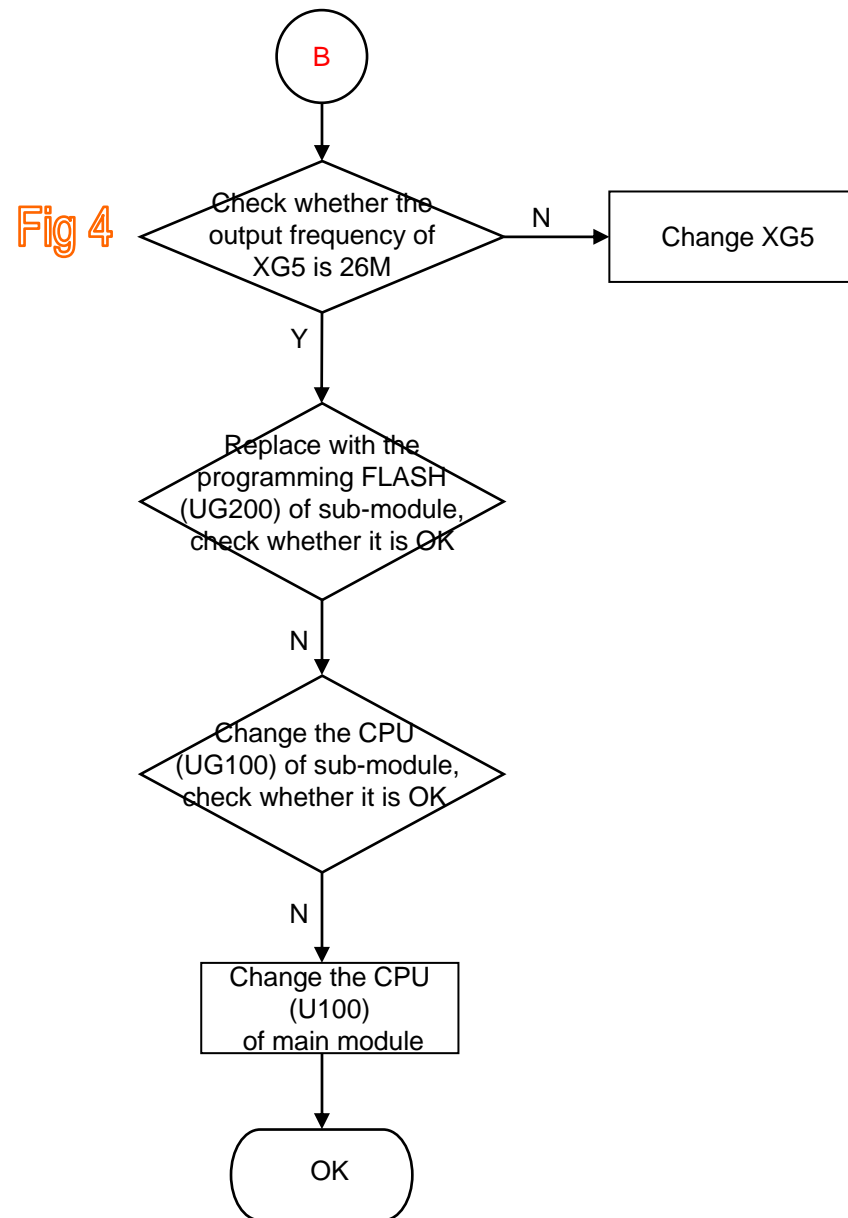




Fig 3

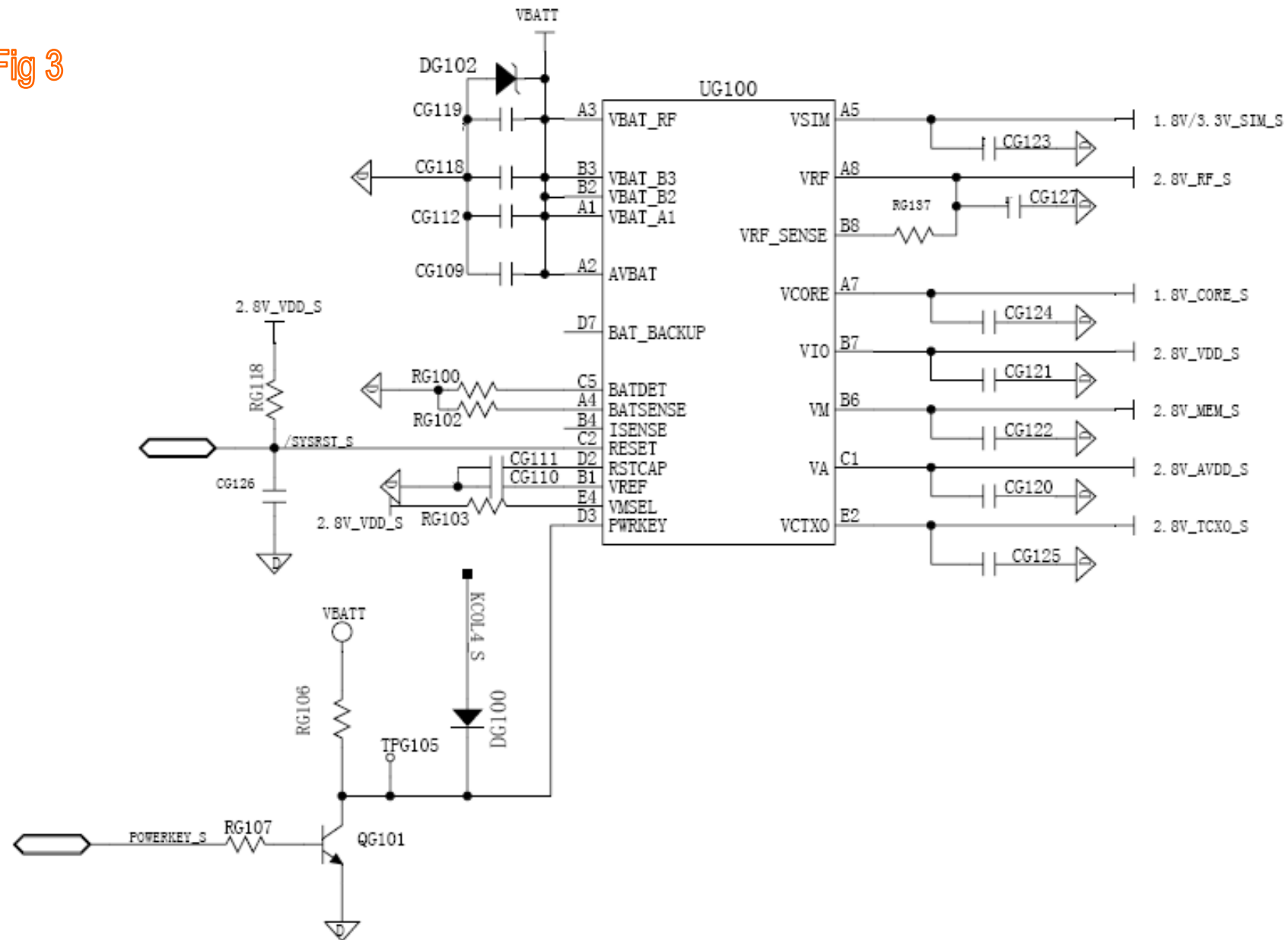
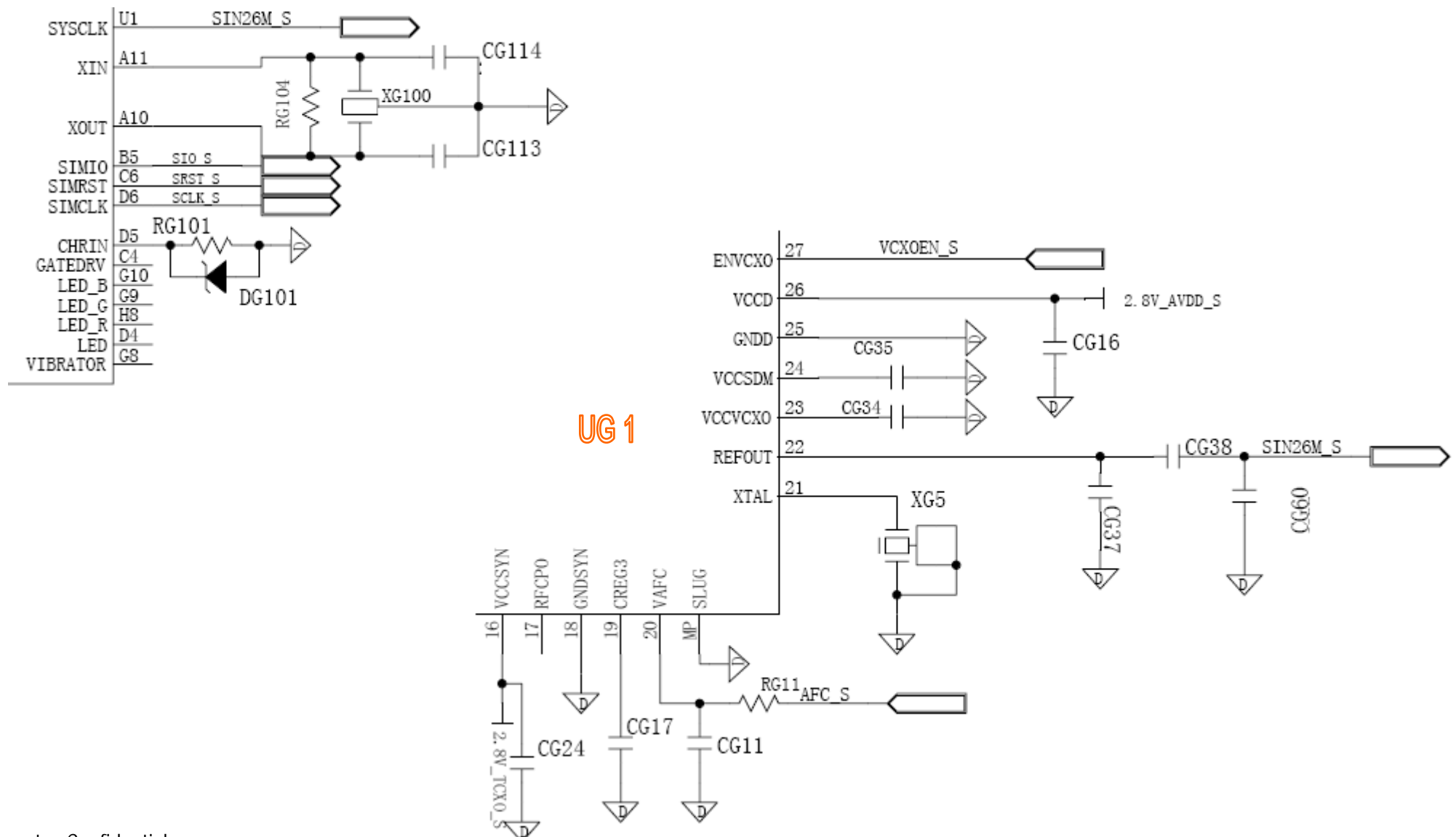


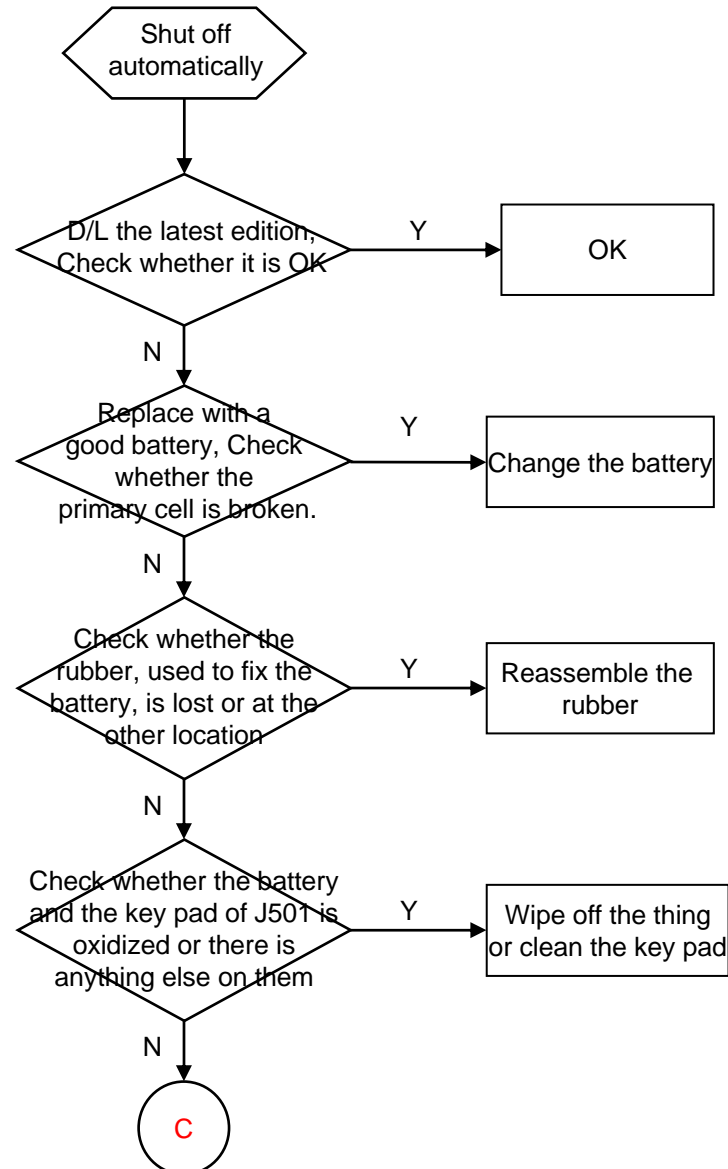


Fig 4





➤ Shut off automatically



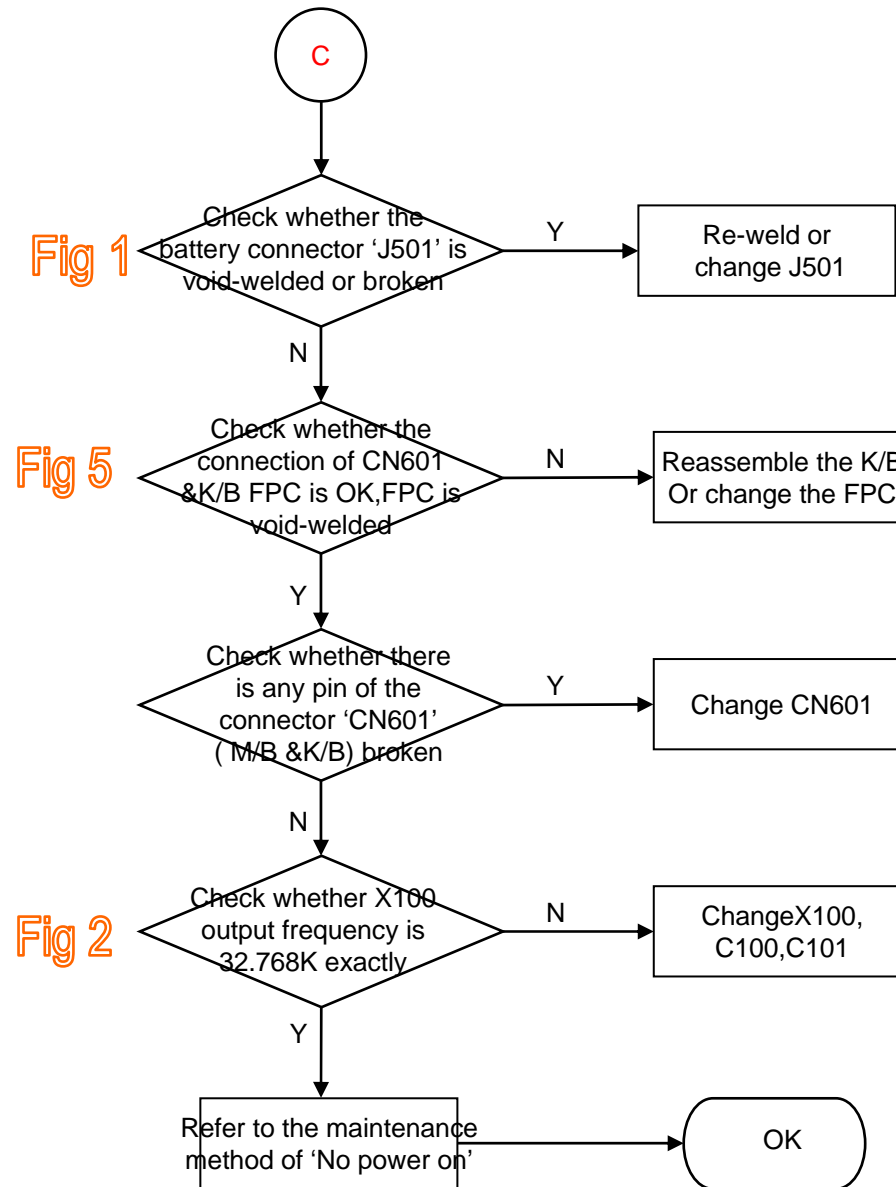
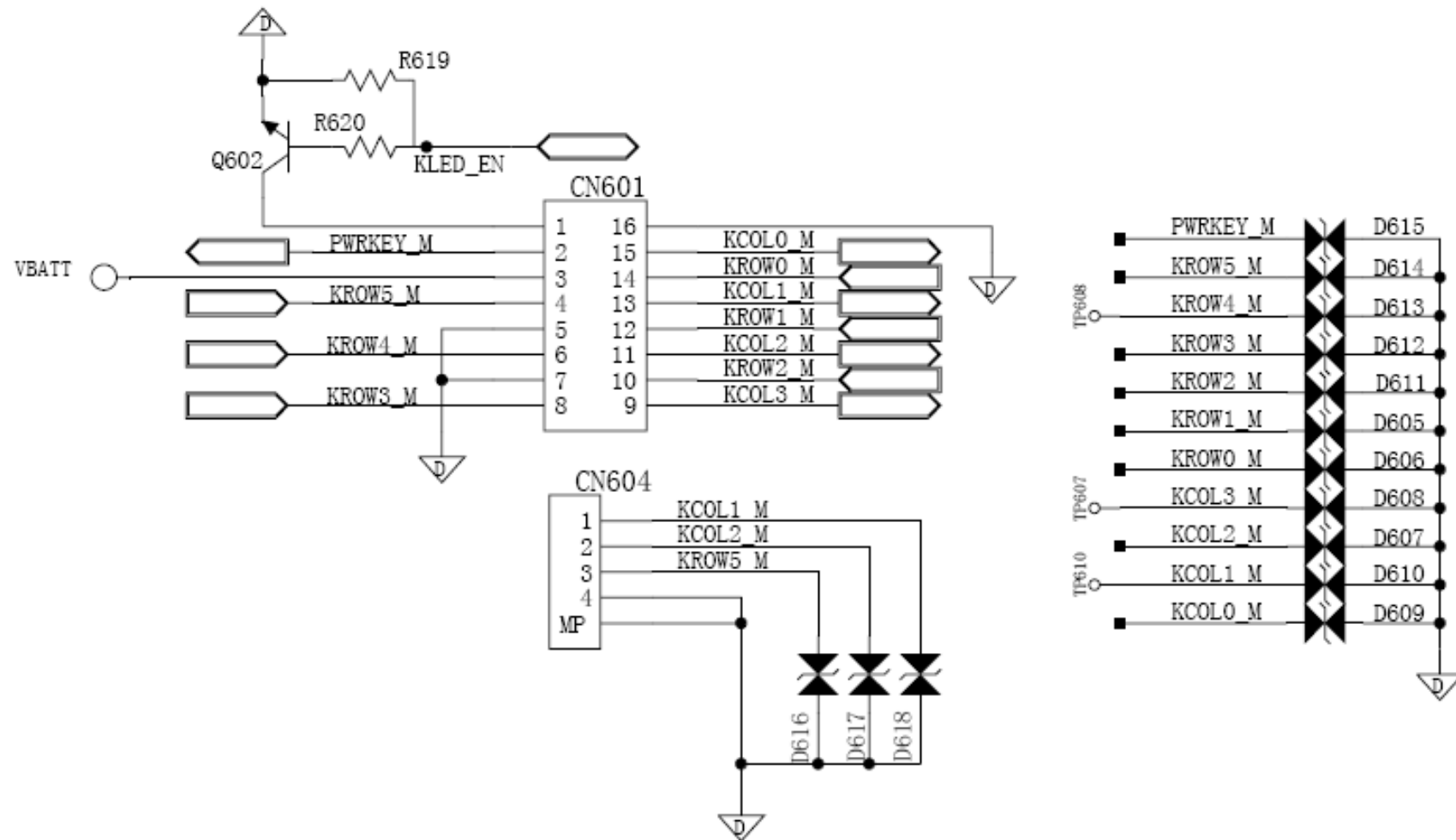
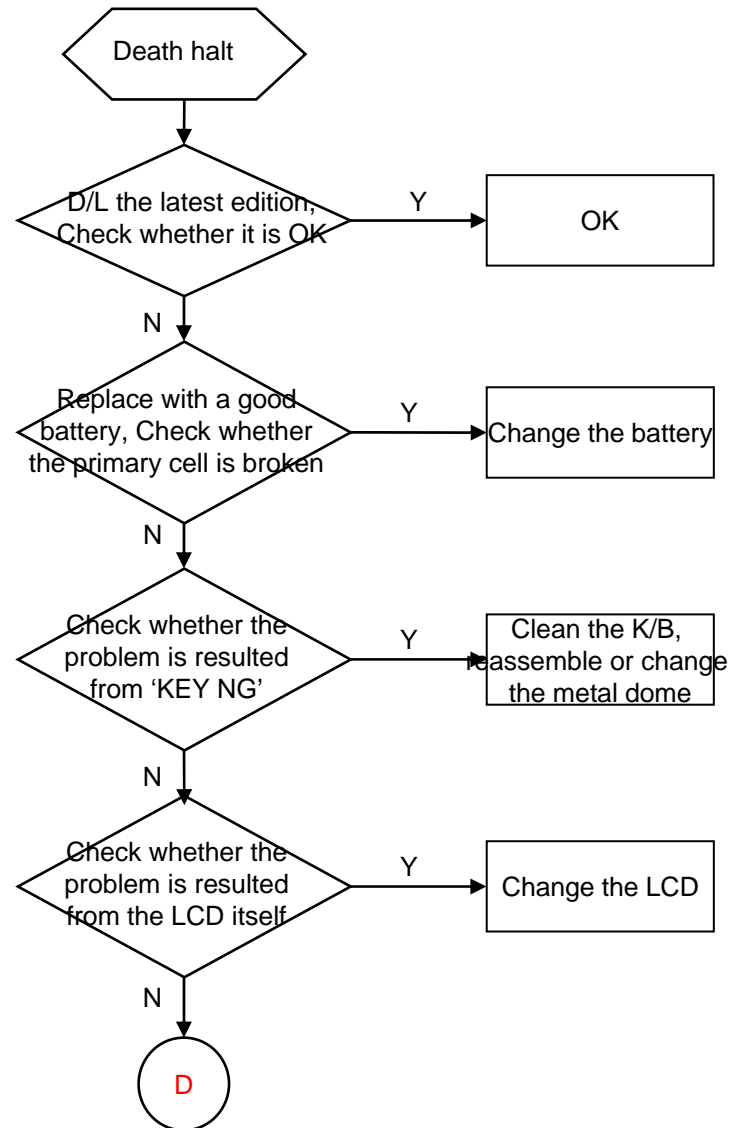


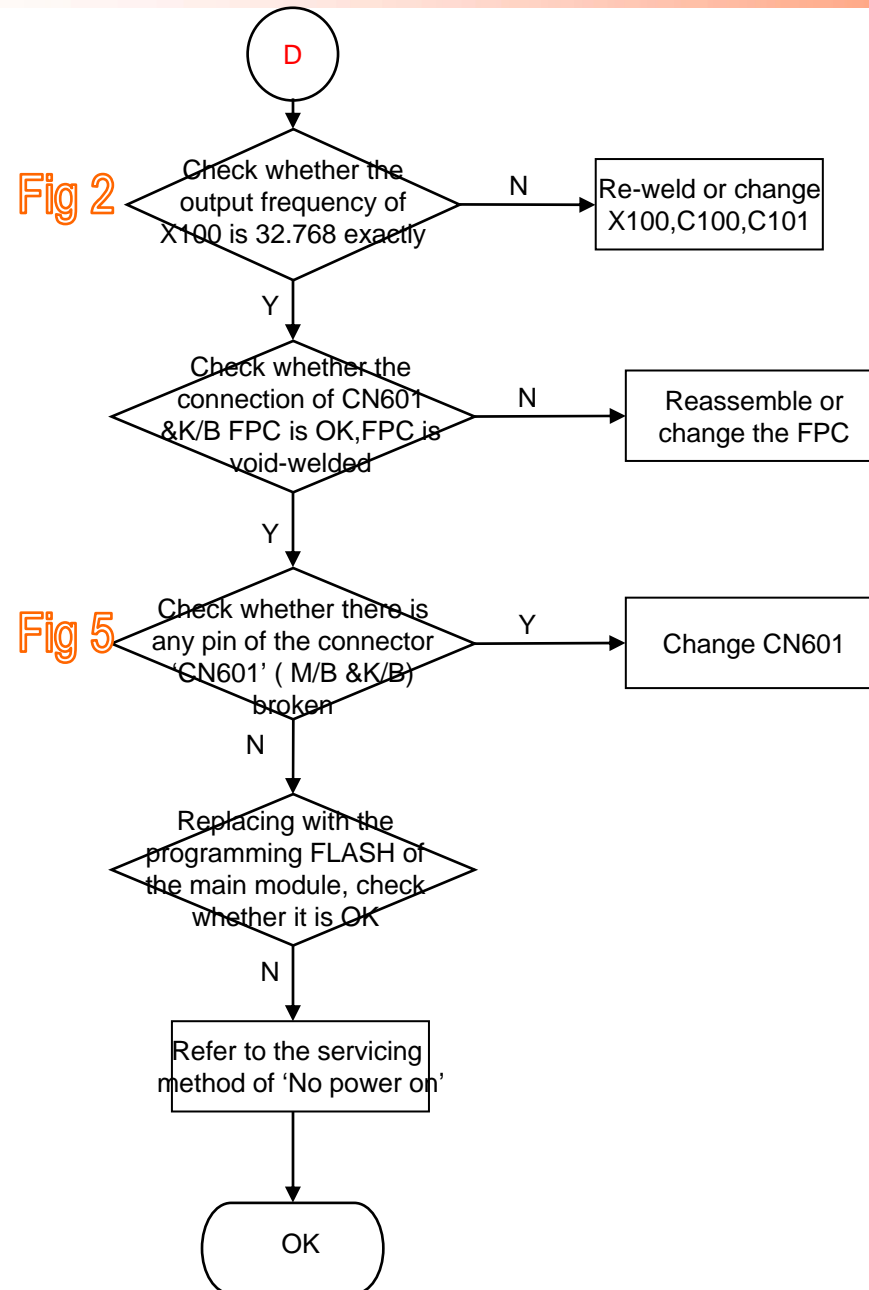
Fig 5



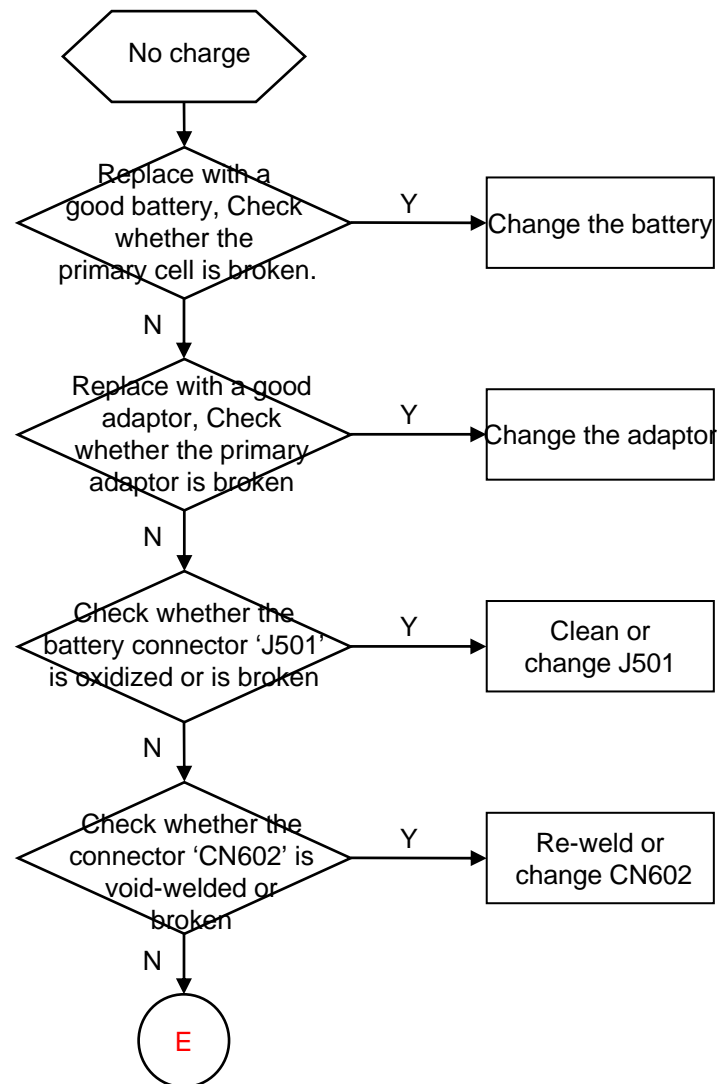


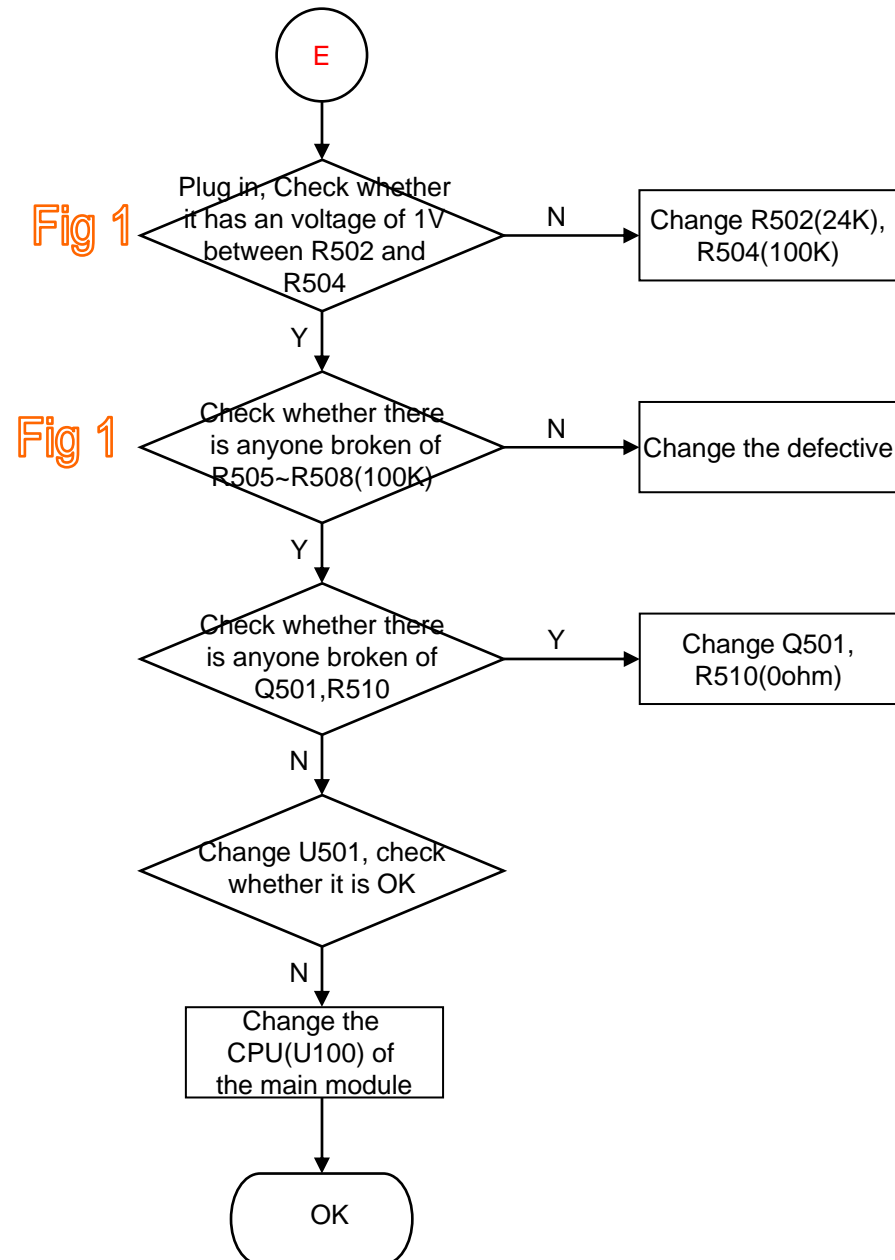
➤ Dead halt



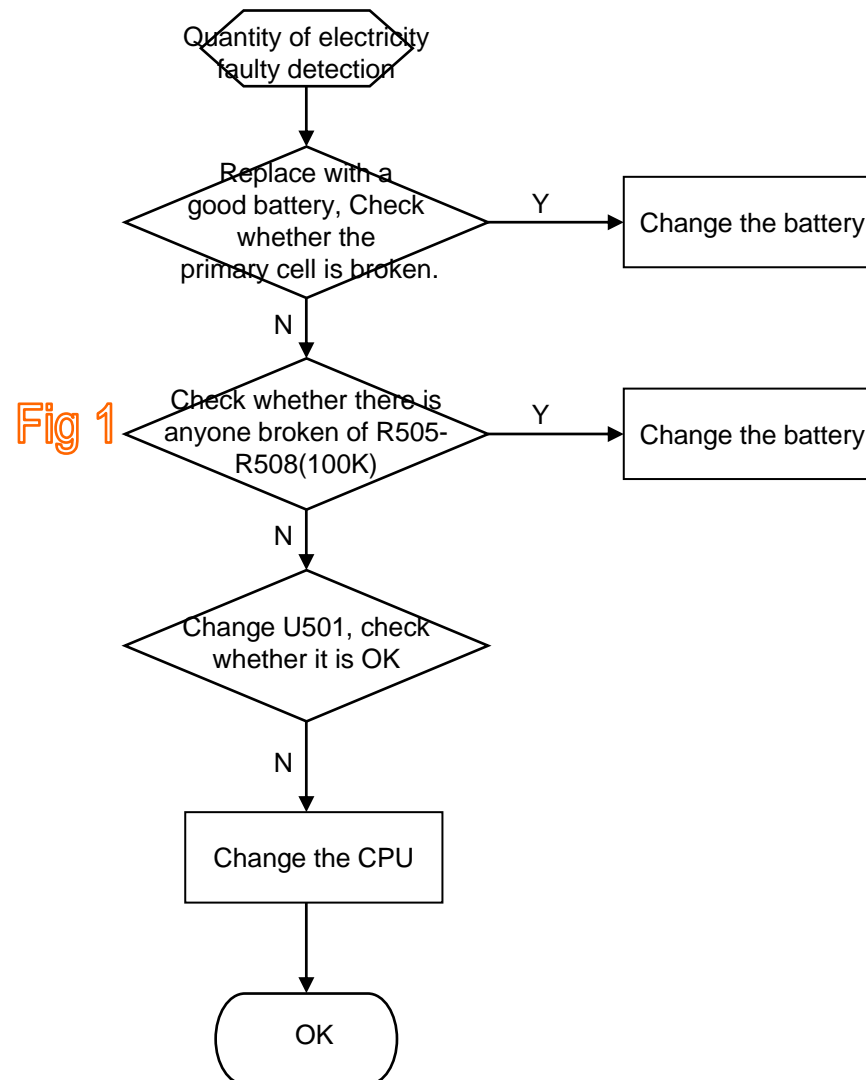


➤ No charge





➤ Quantity of electricity faulty detection



➤ No display

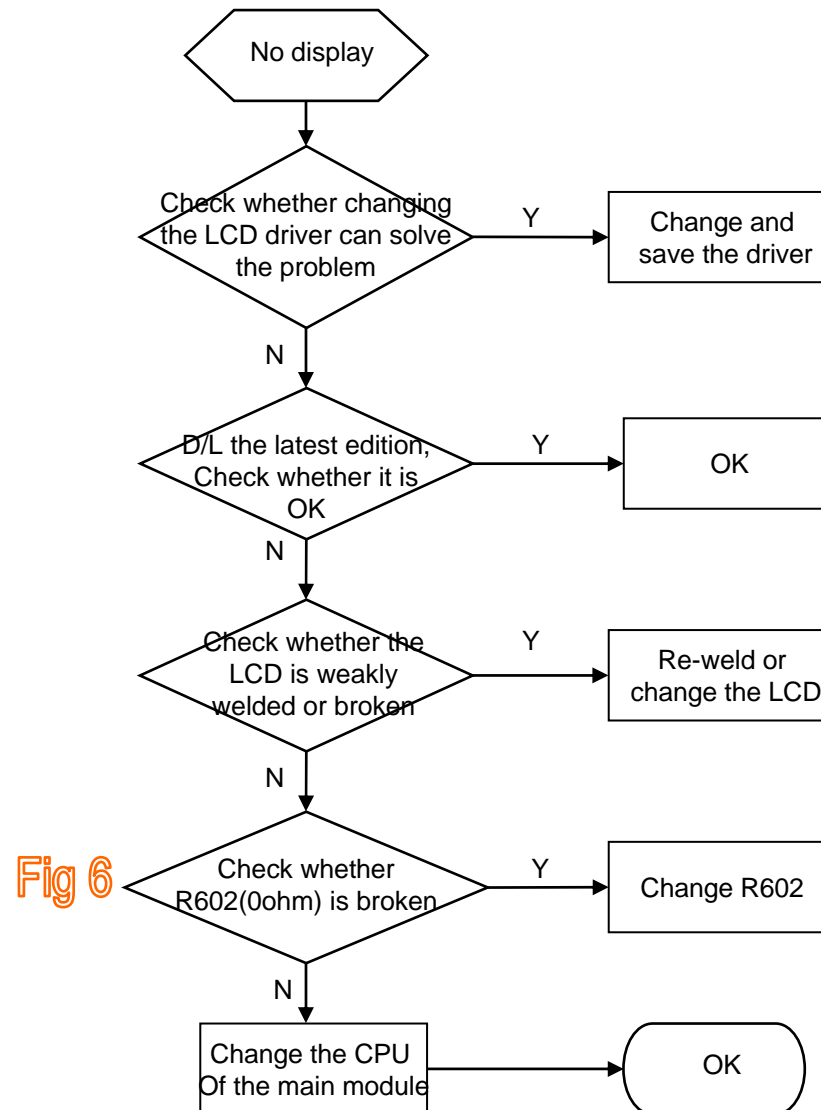
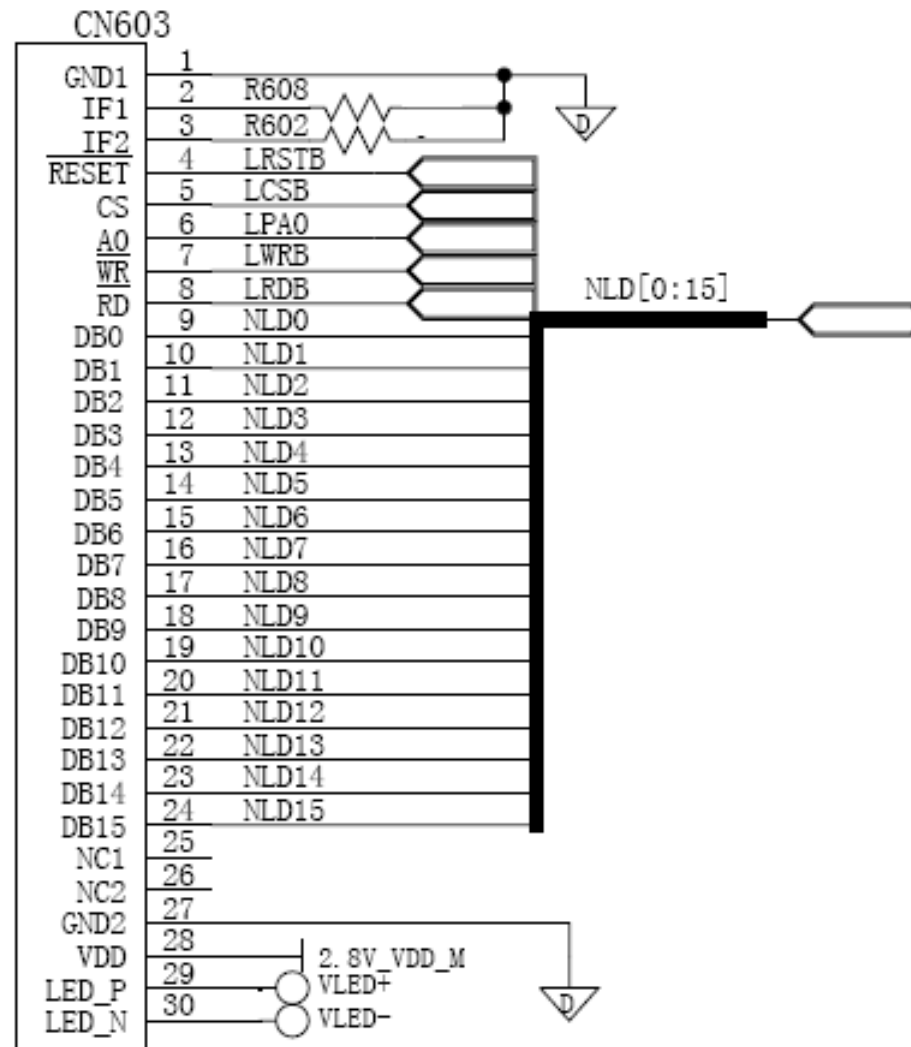


Fig 6





➤ LED NG (on the LCD)

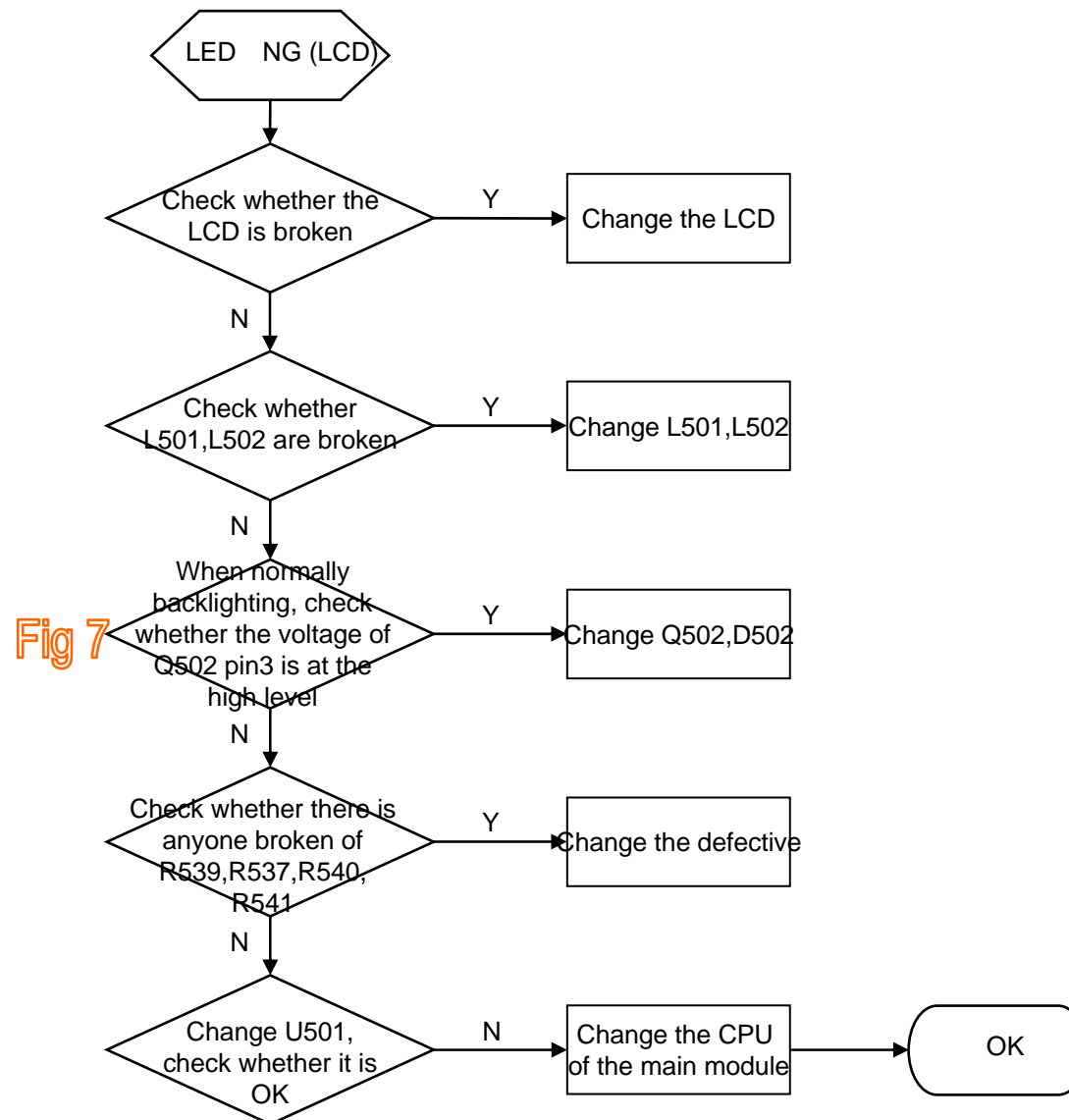
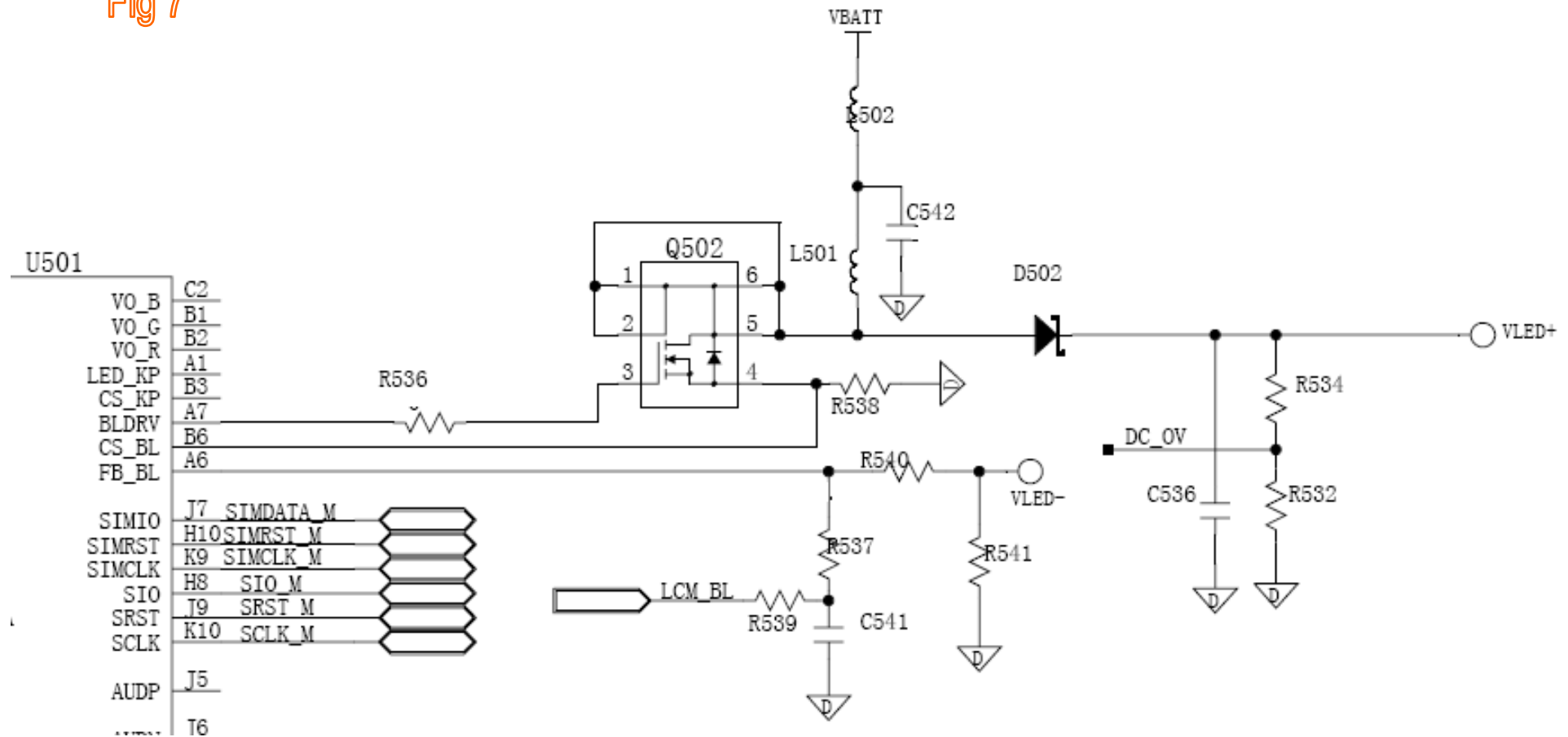


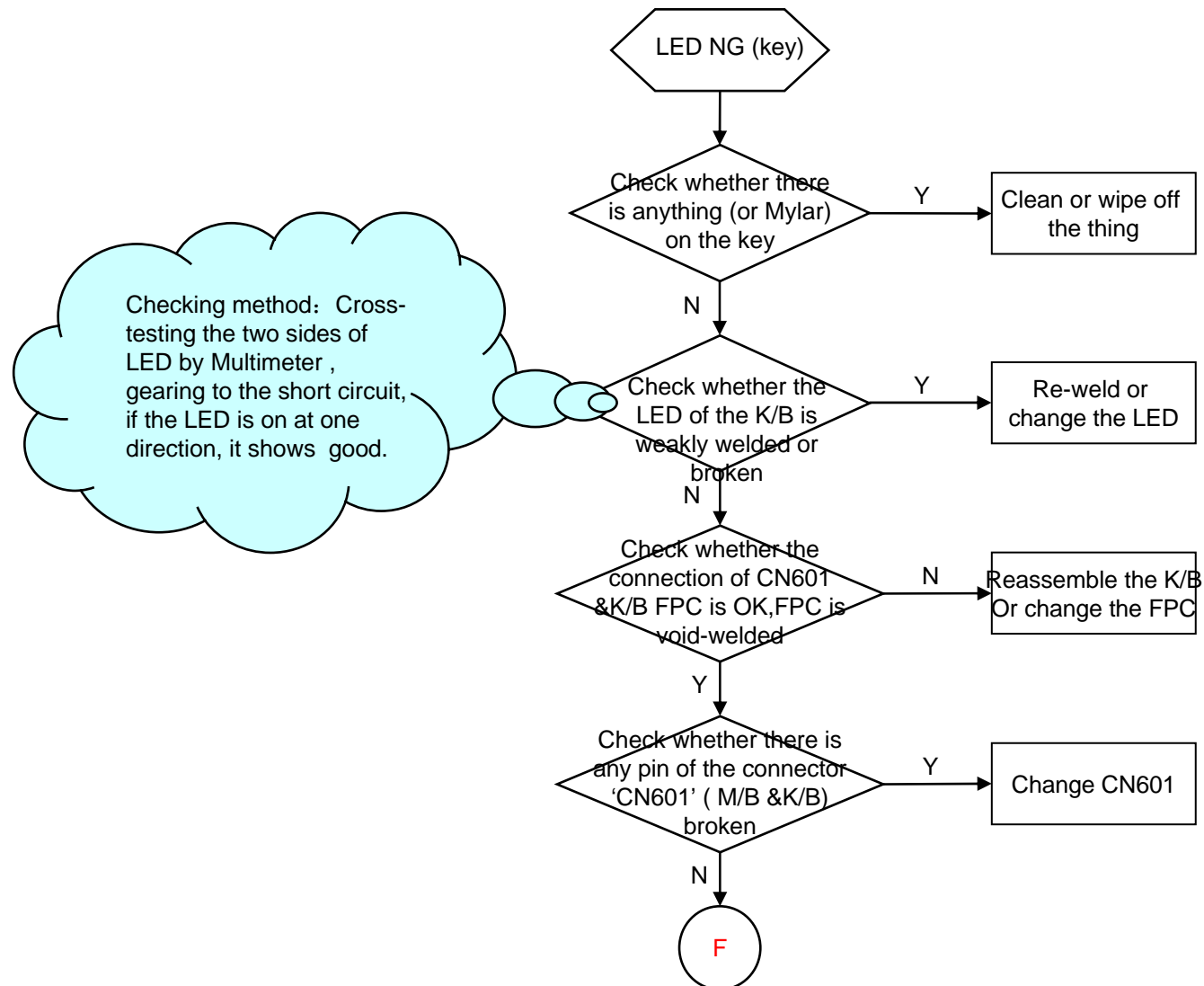


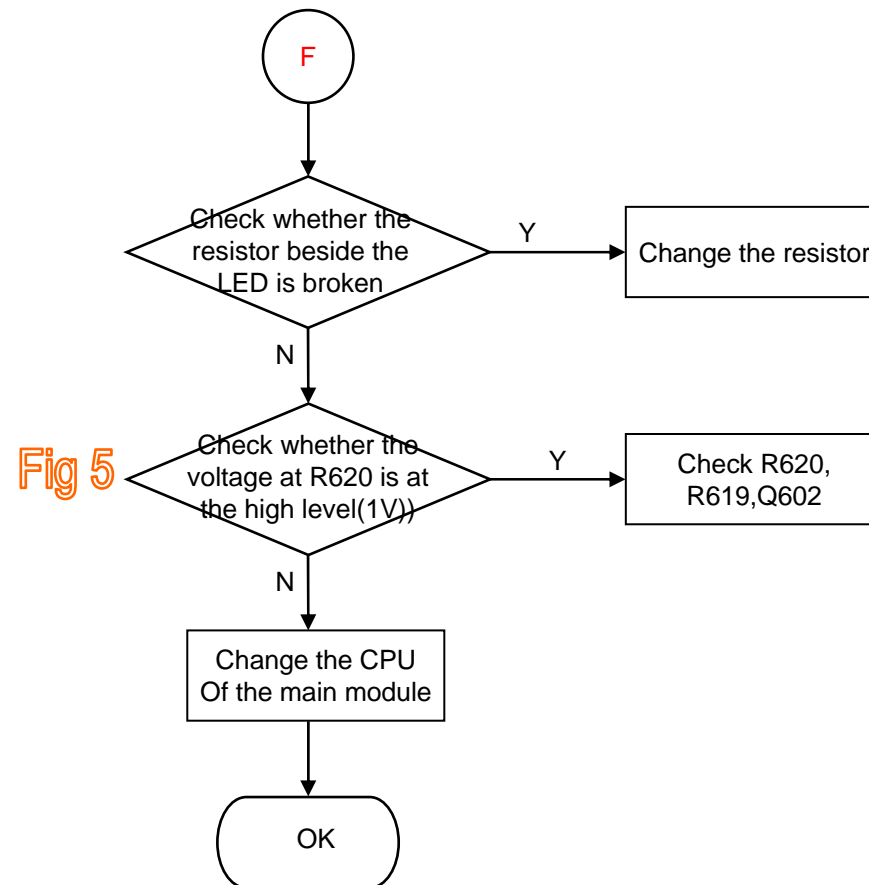
Fig 7



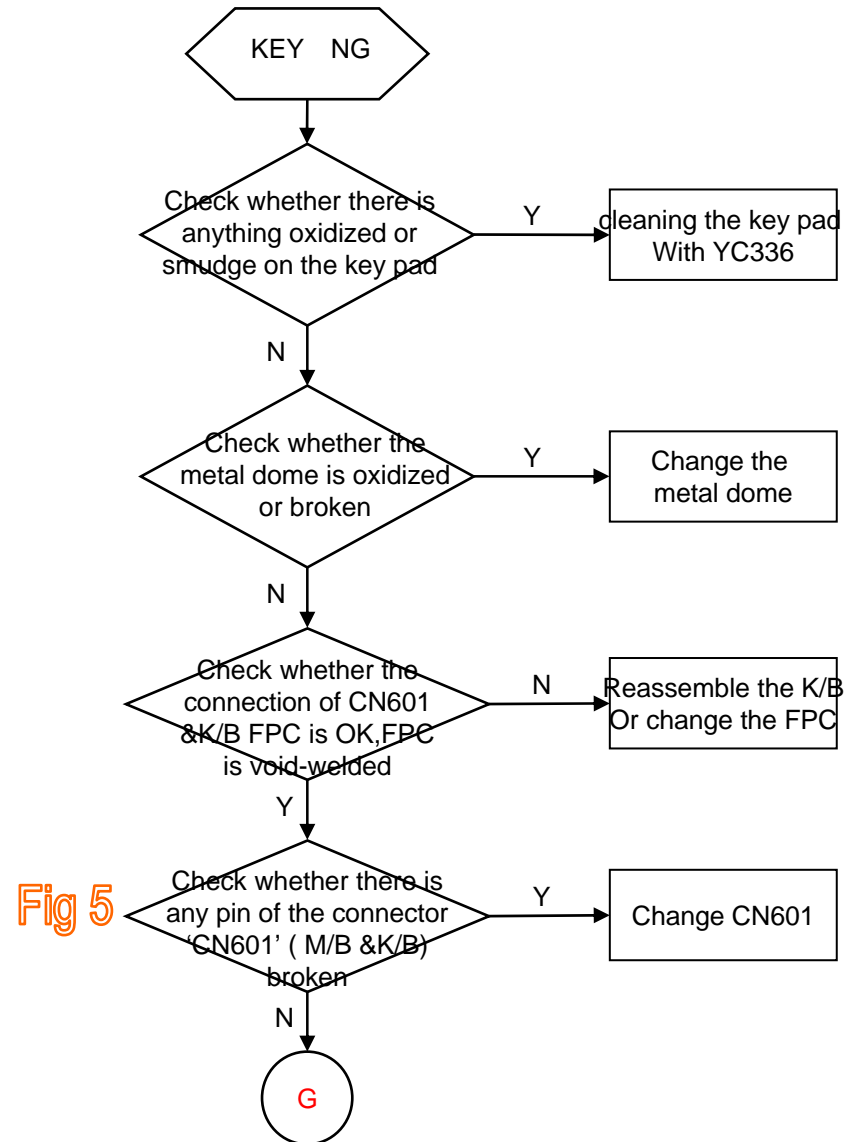


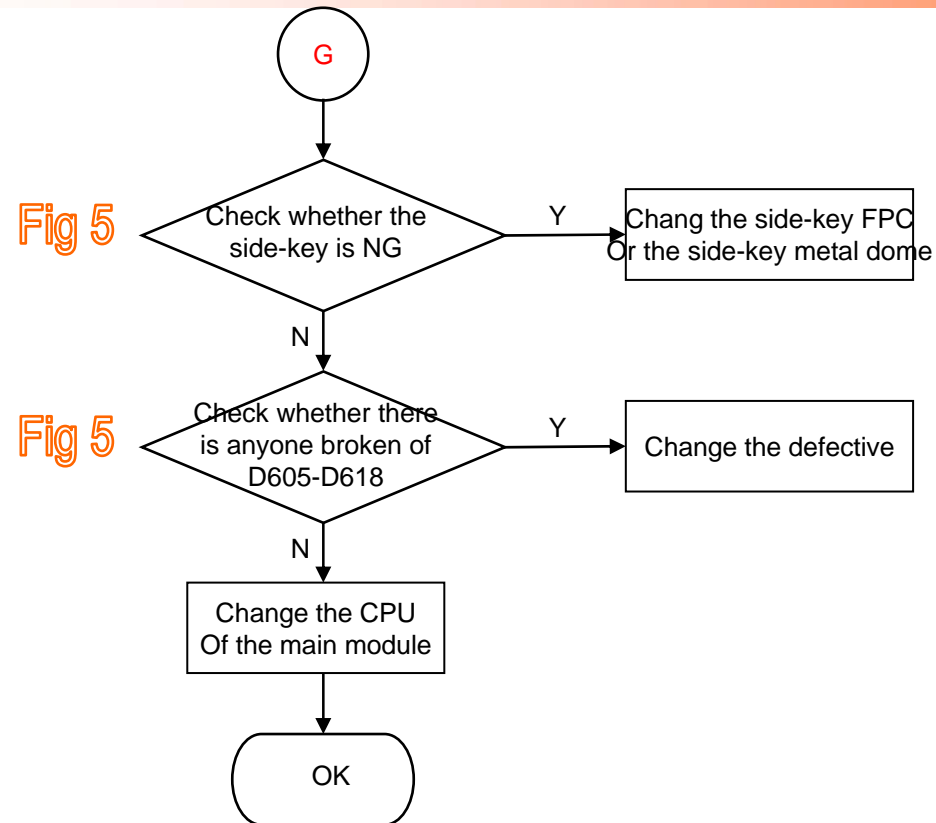
➤ LED NG (on the key board)



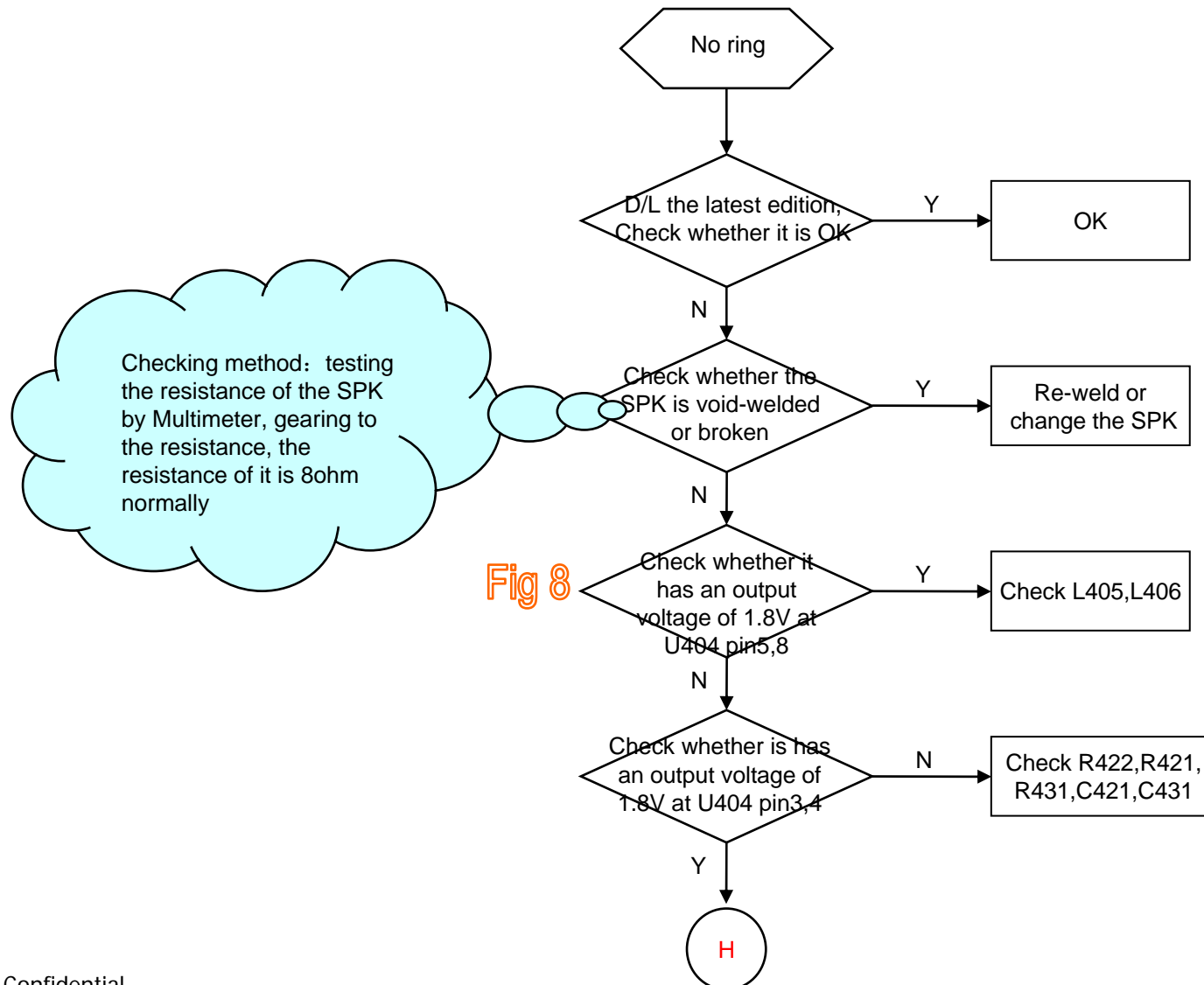


➤ Key NG





➤ No ring



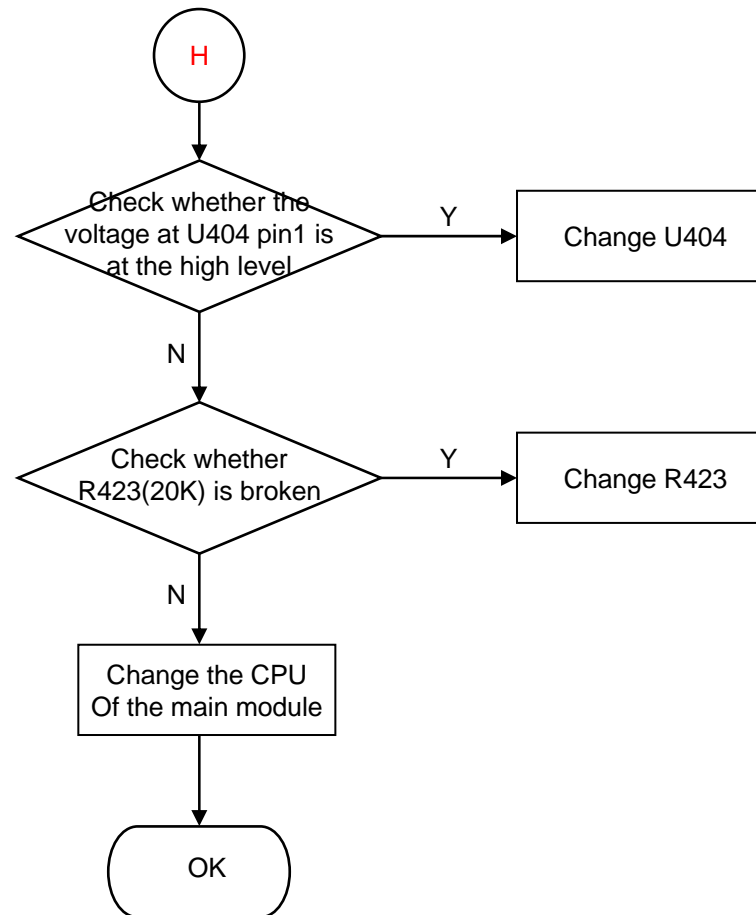
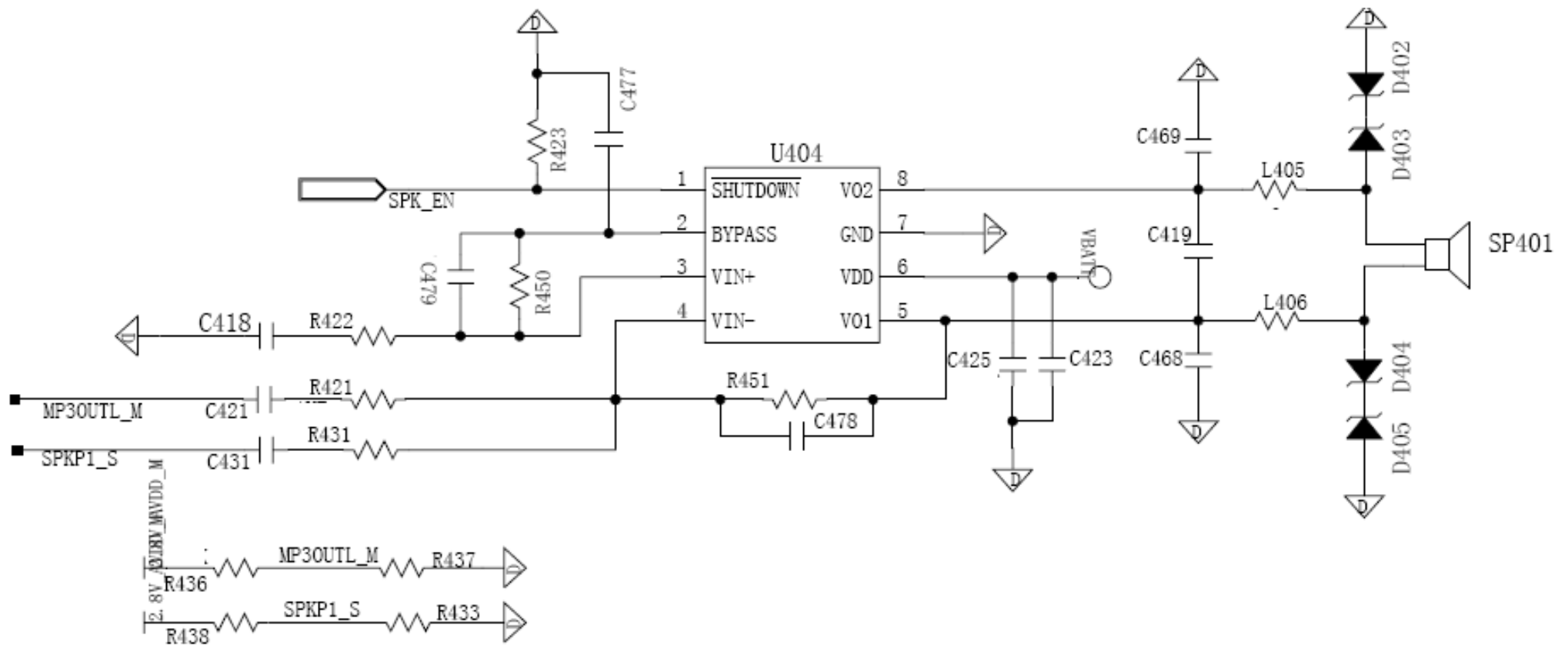


Fig 8





➤ No receiving voice

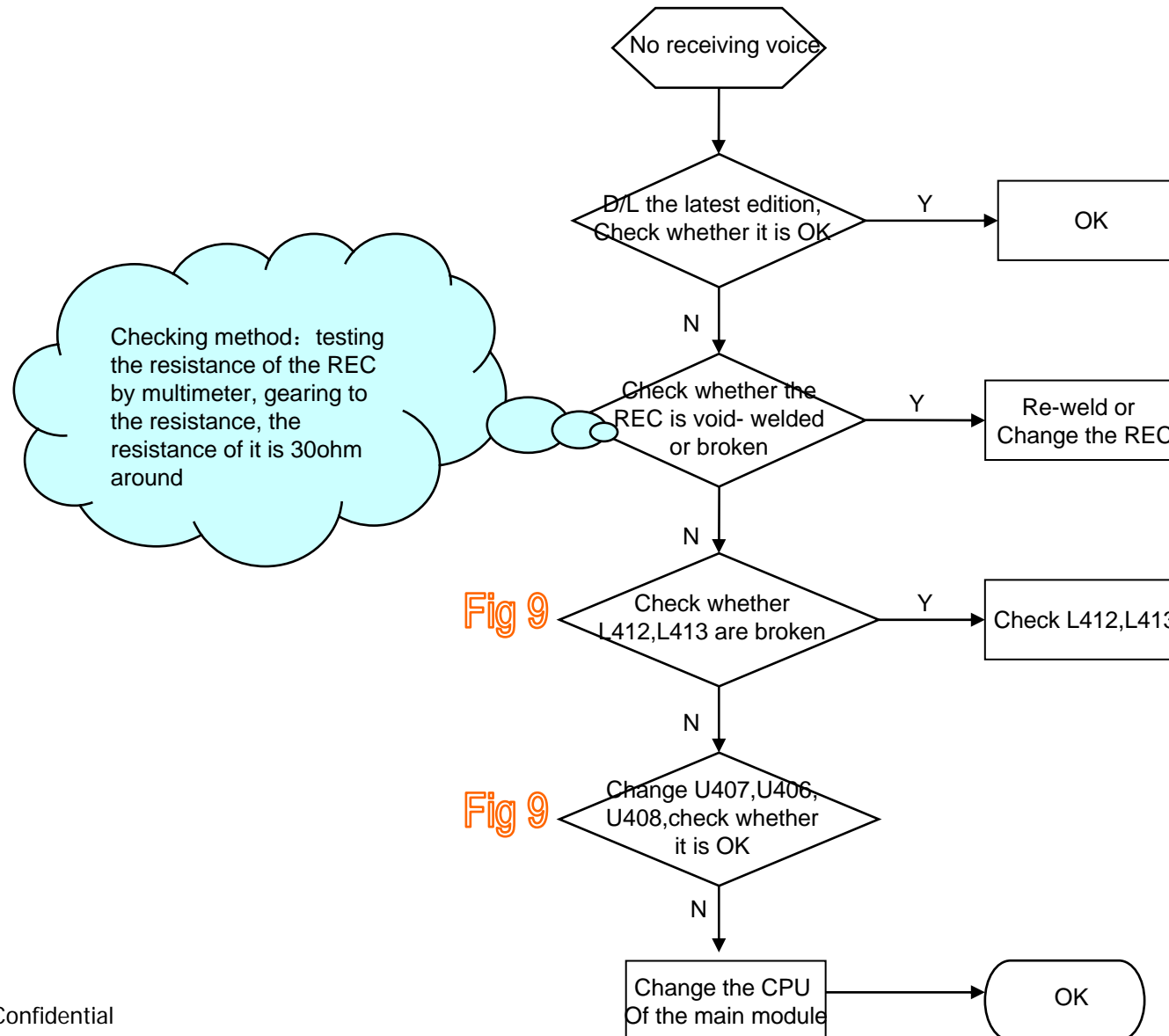
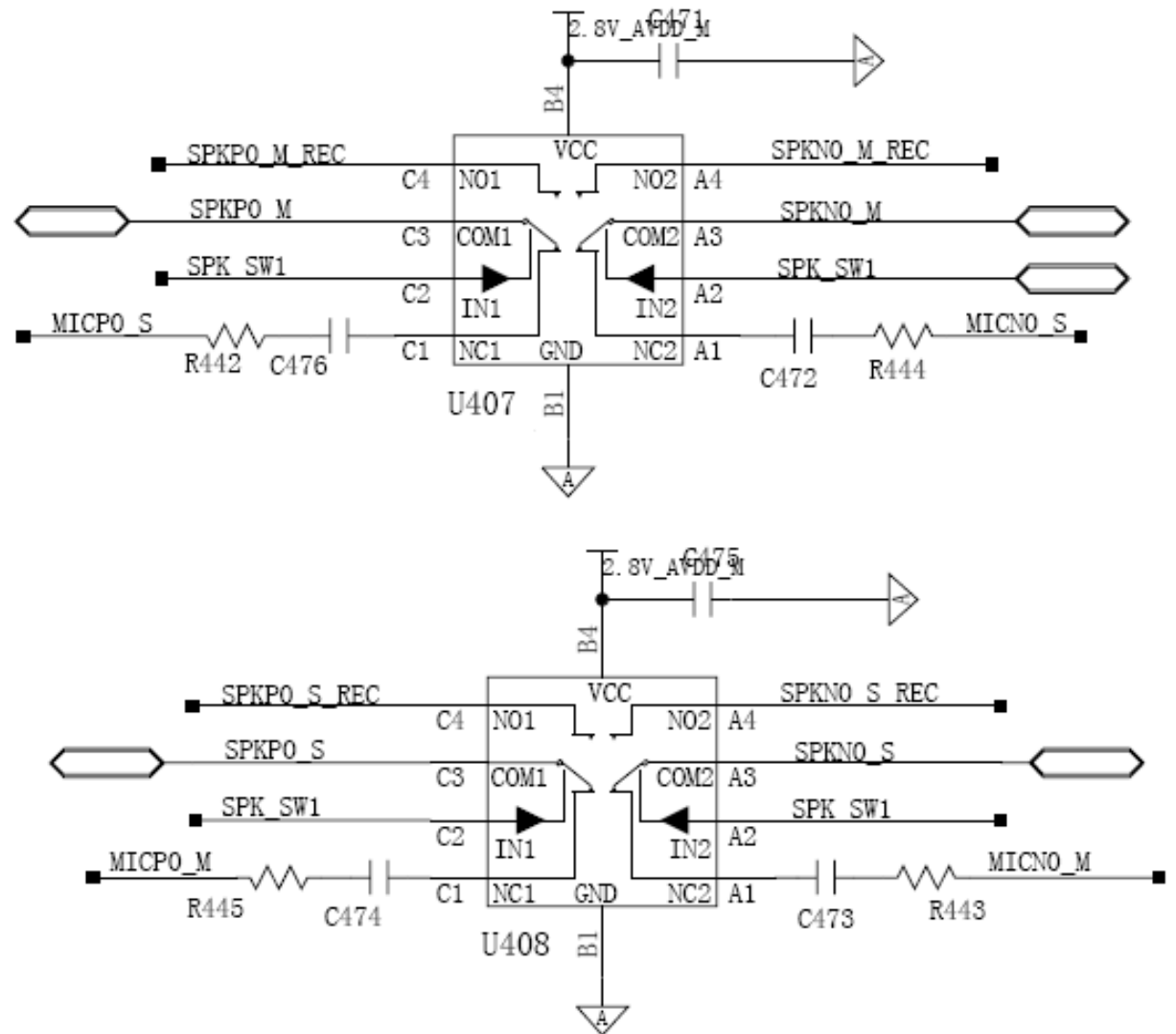
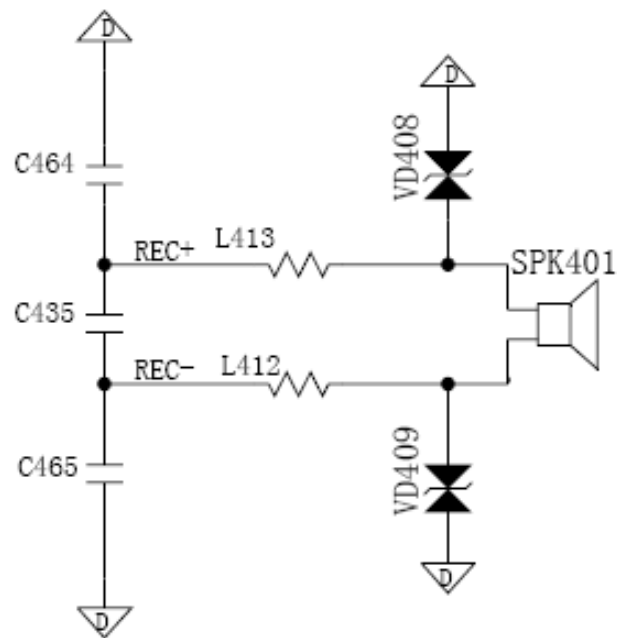




Fig 9





➤ No sending voice or the voice is small

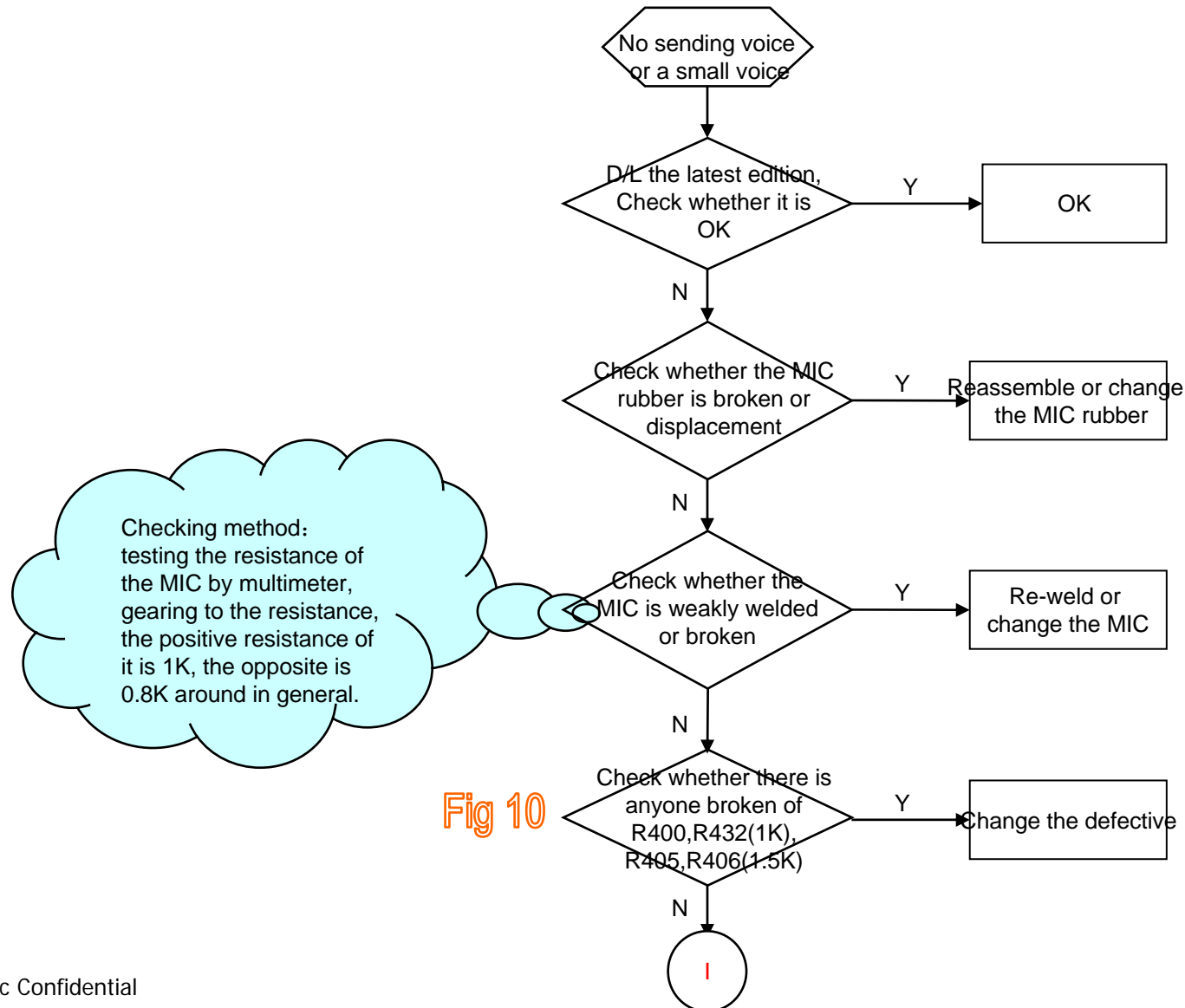


Fig 10

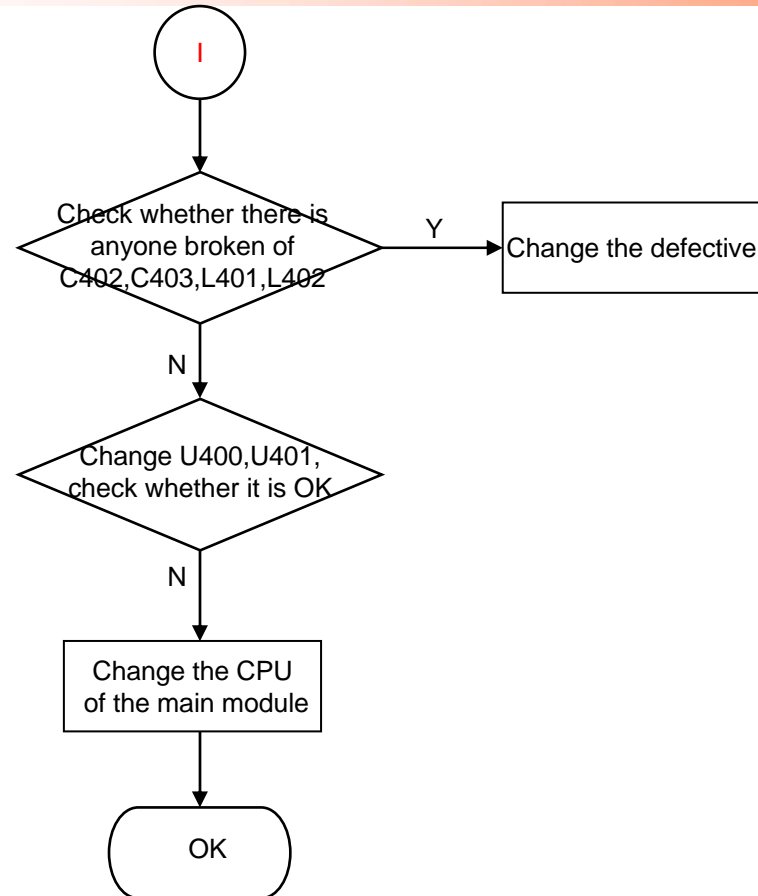
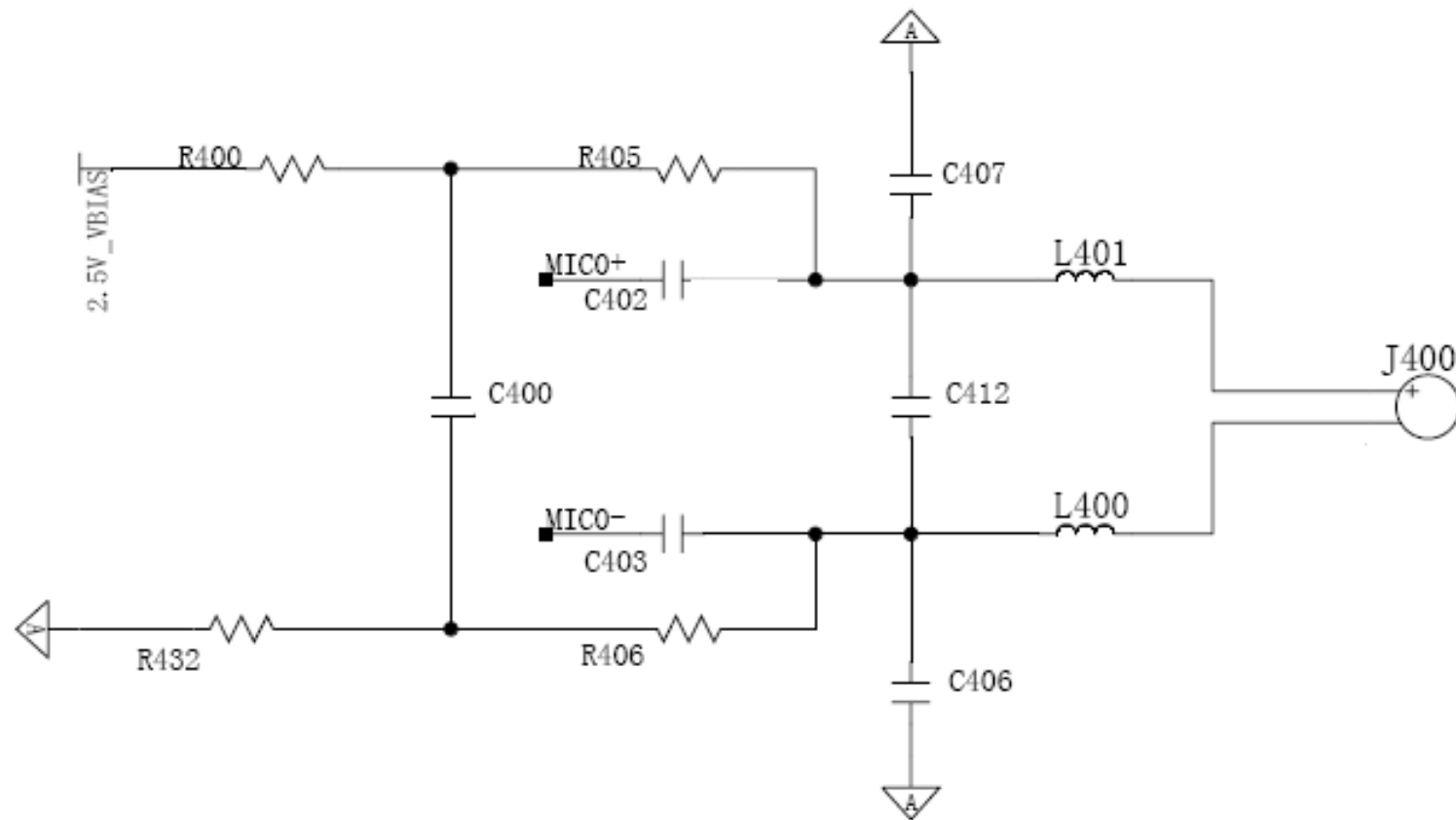




Fig 10





➤ No vibration

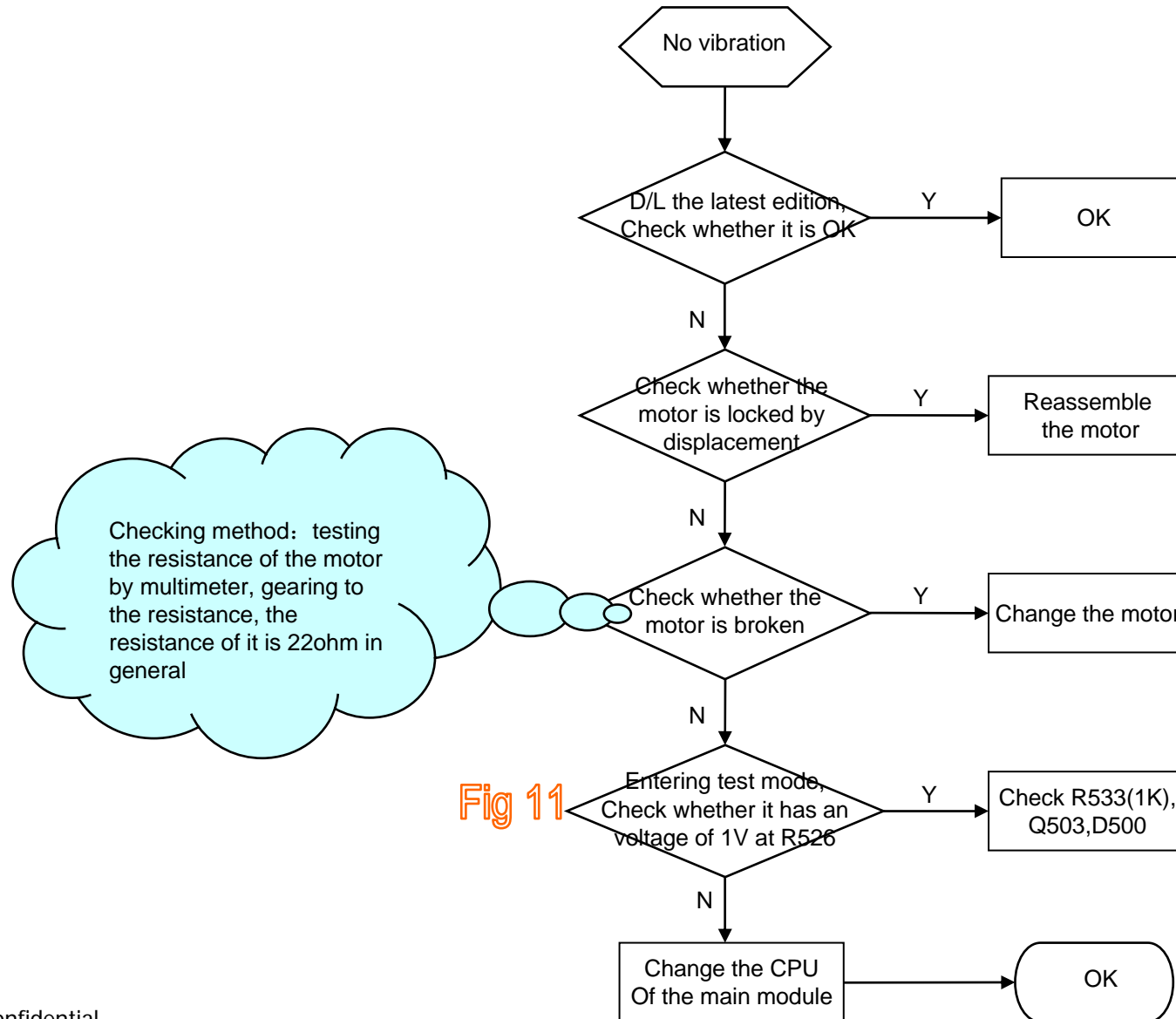
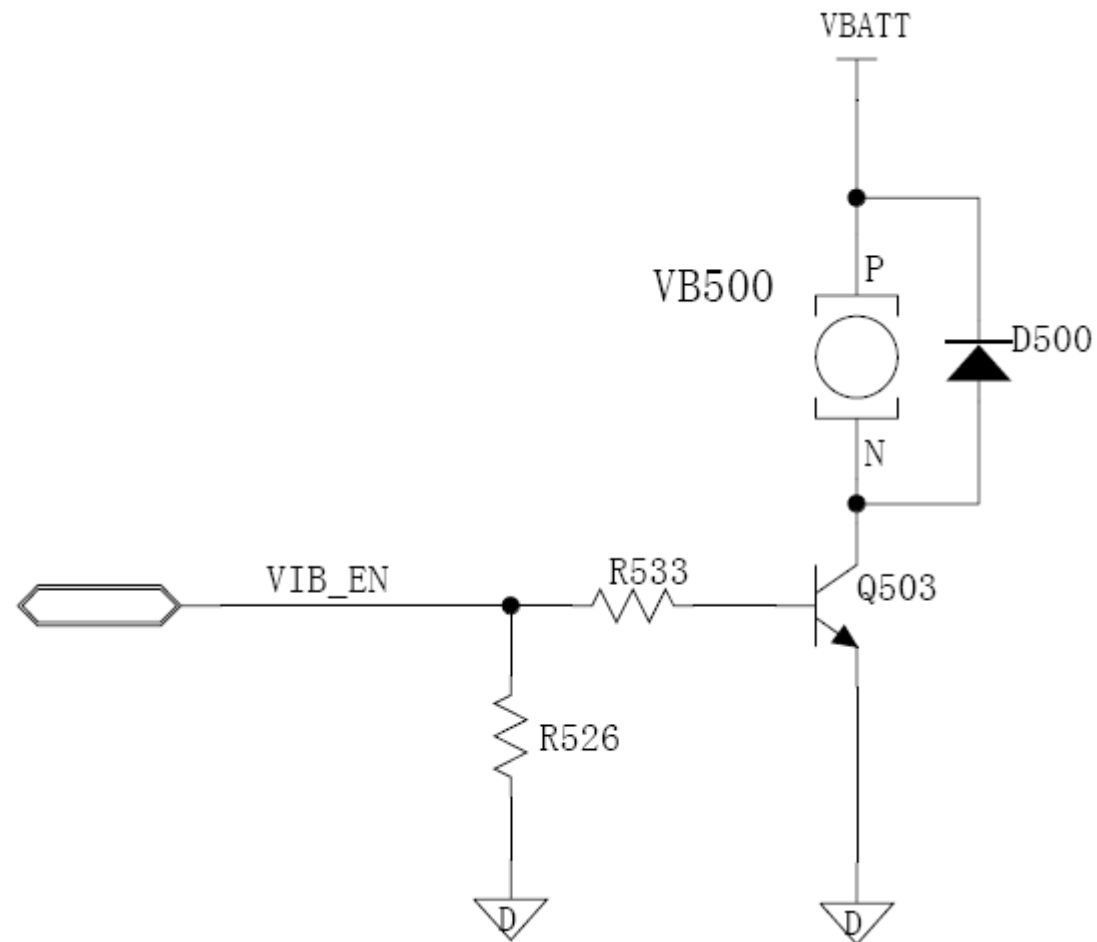
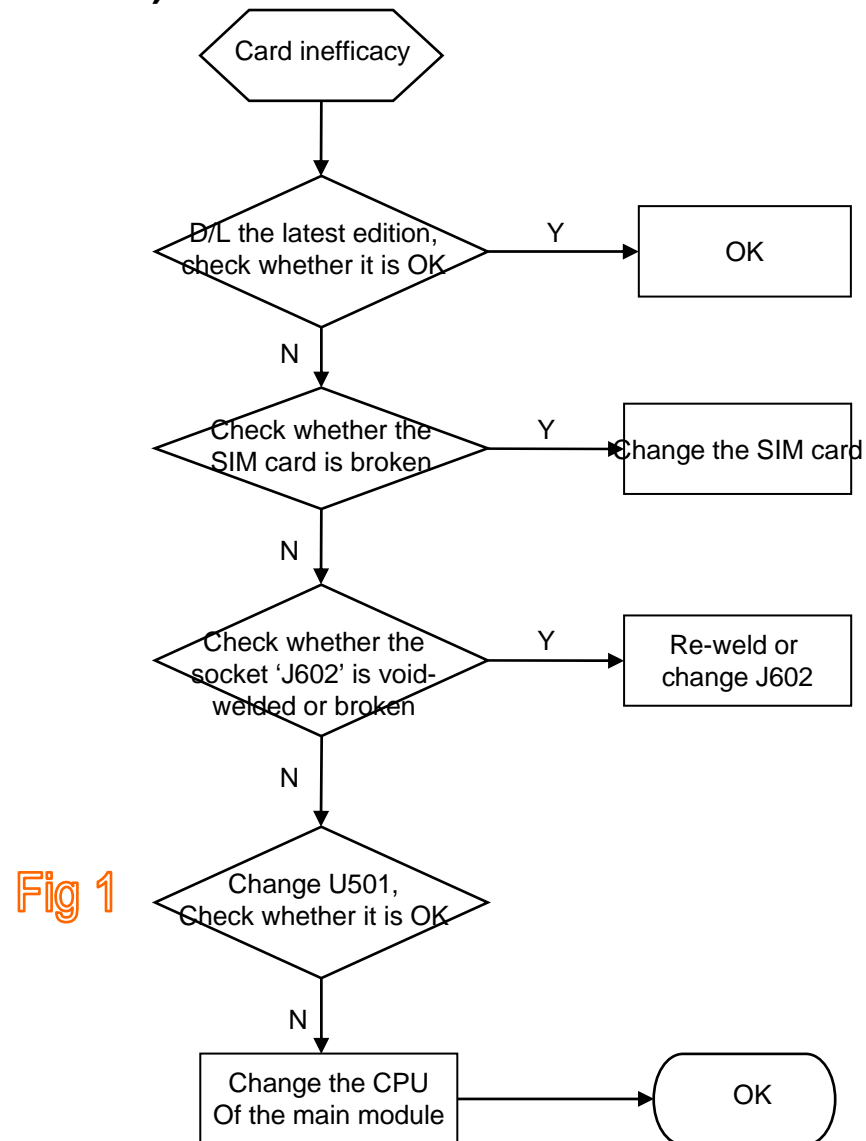


Fig 11



➤ **Card inefficacy (Main module)**





➤ Card inefficacy (Sub-module)

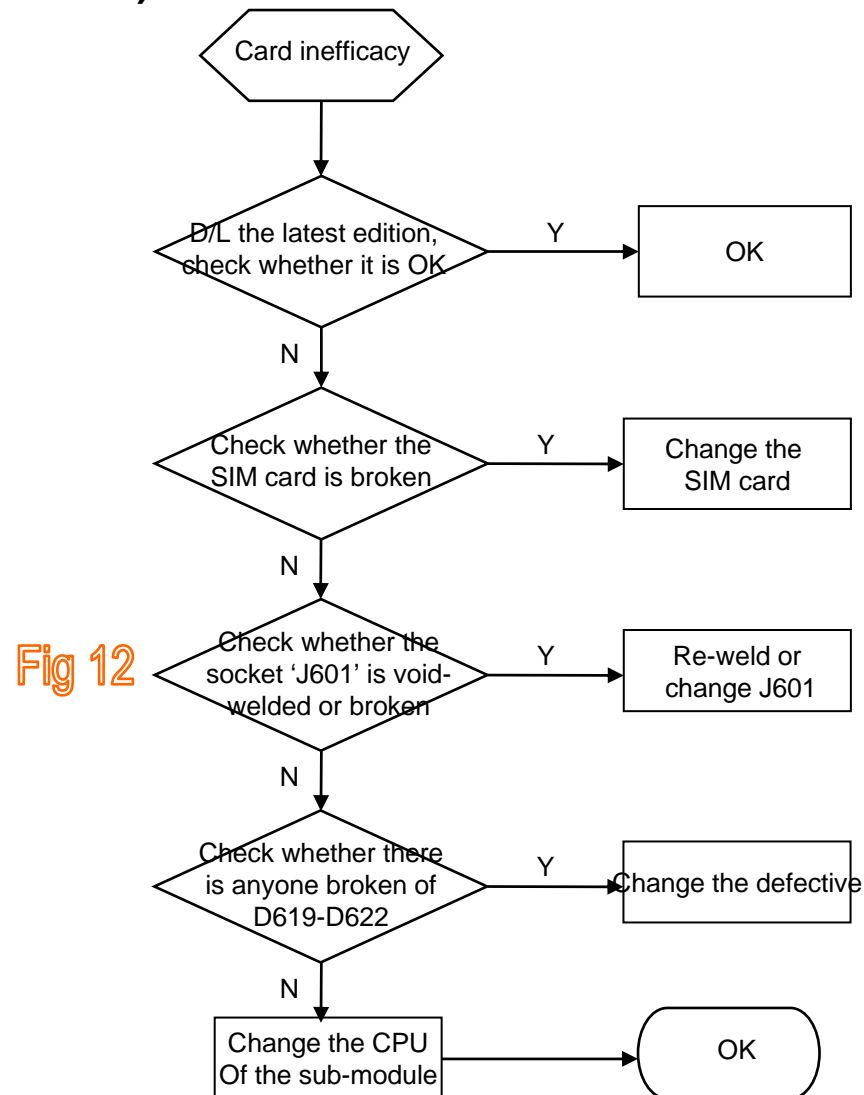
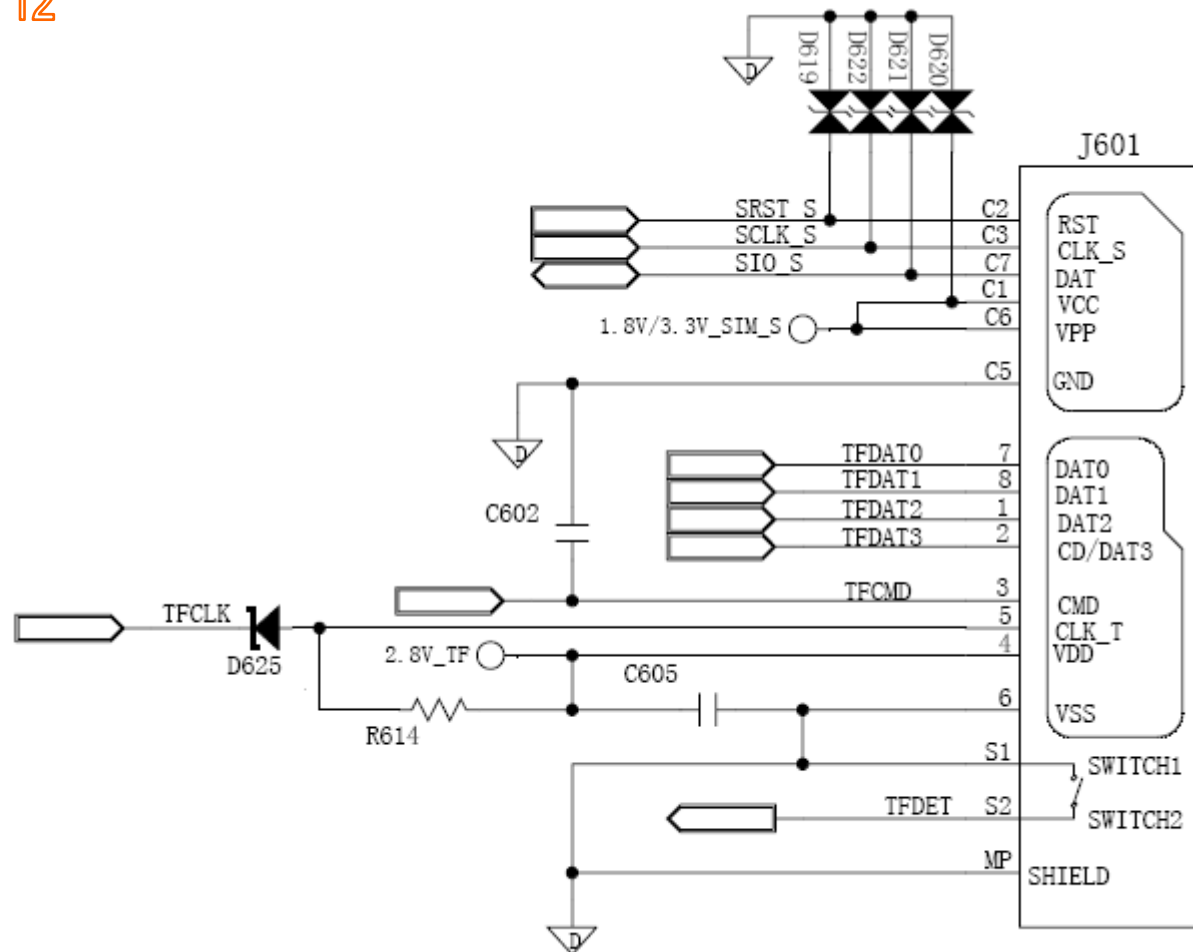


Fig 12



➤ Camera inefficacy

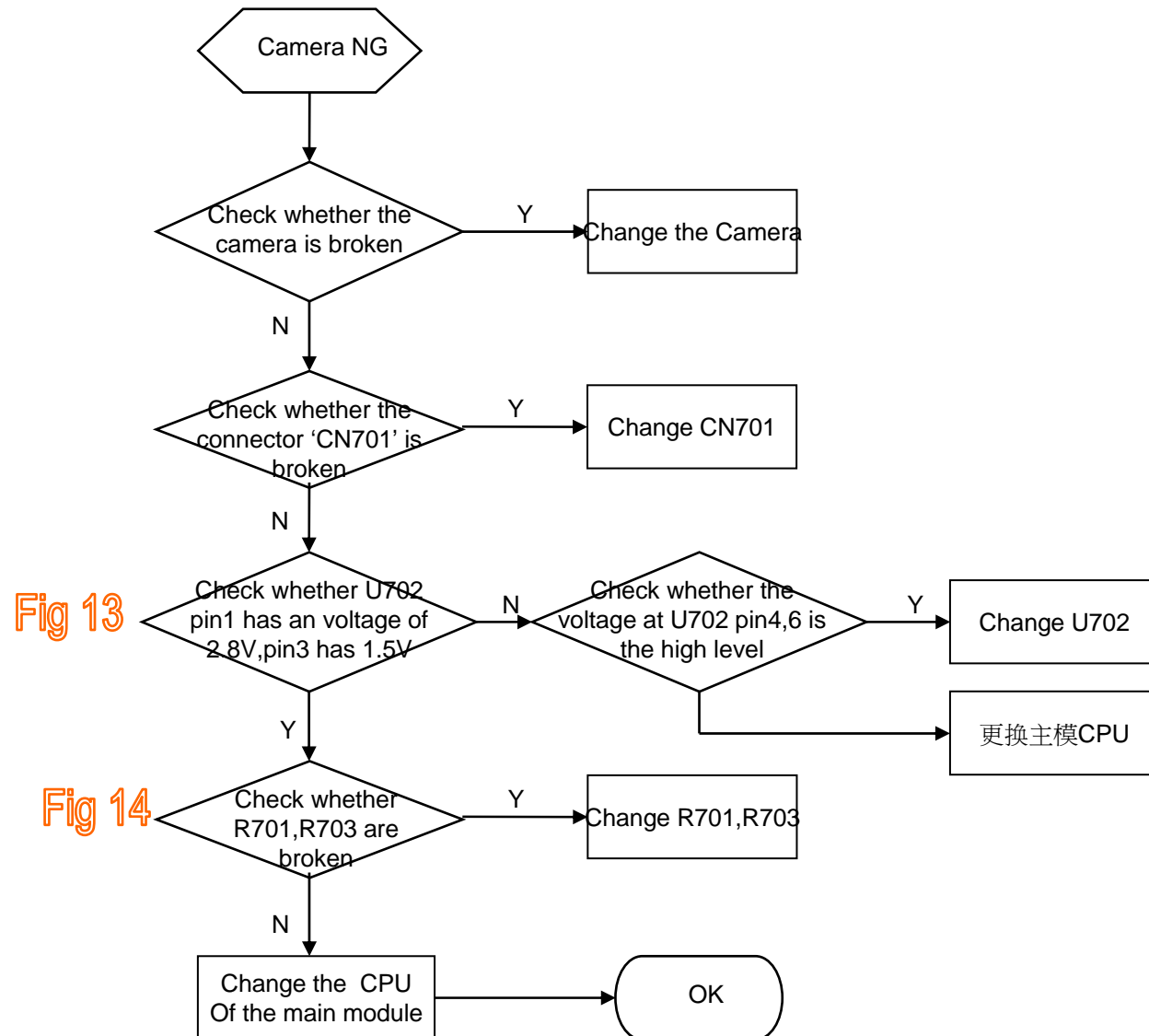


Fig 13

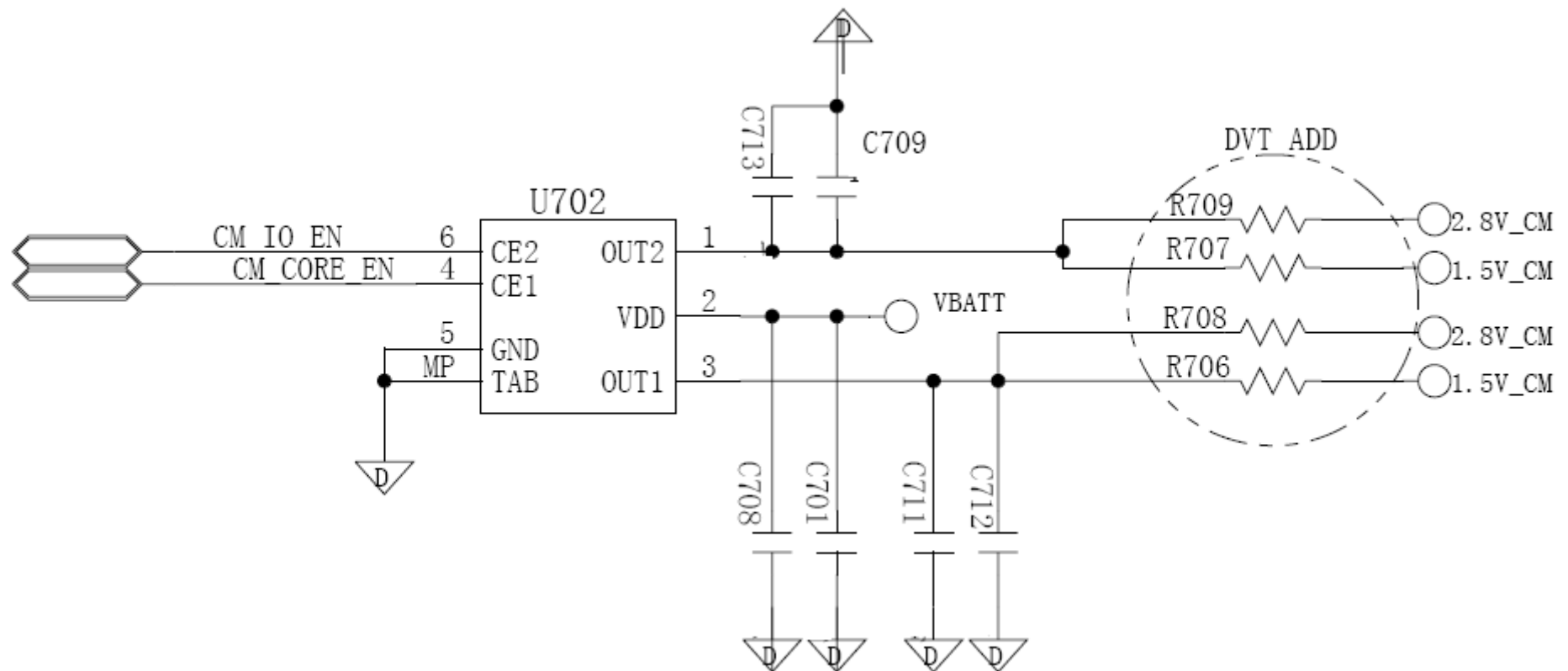
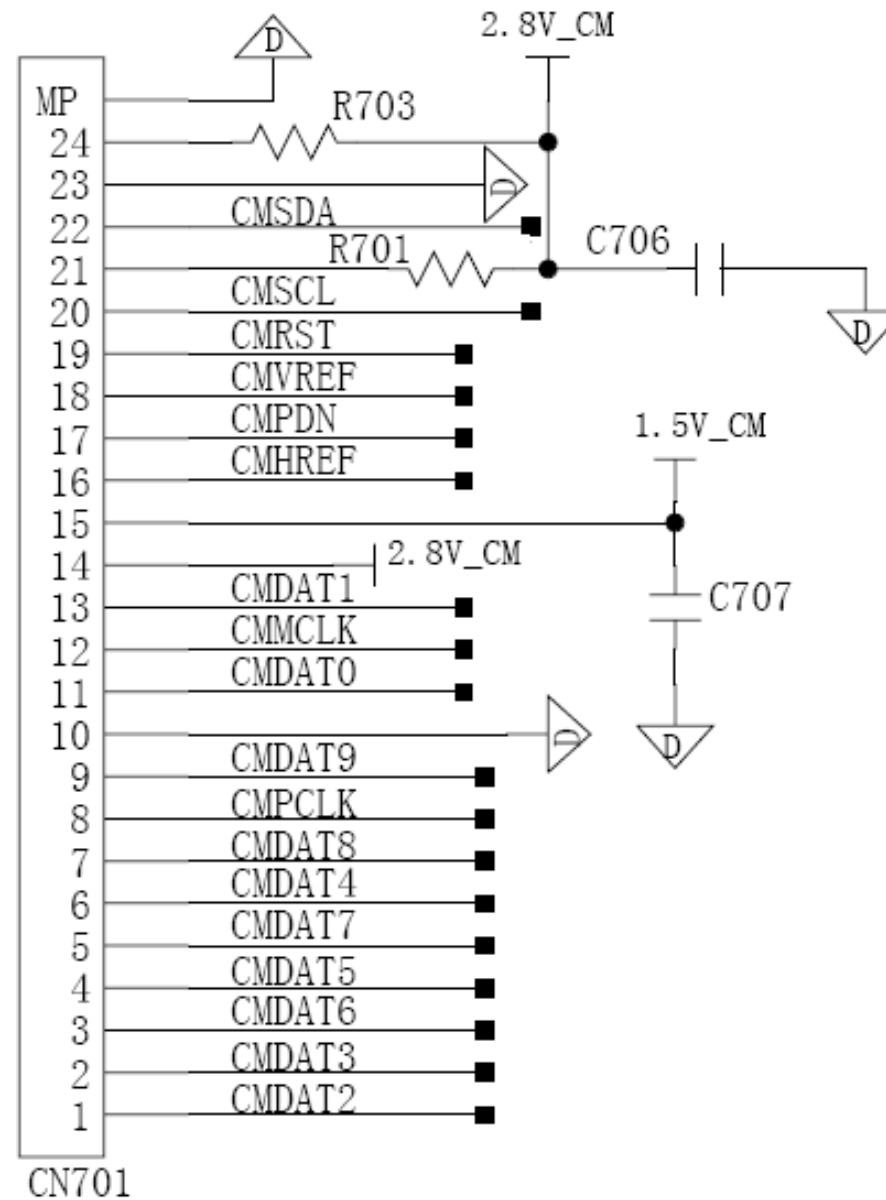
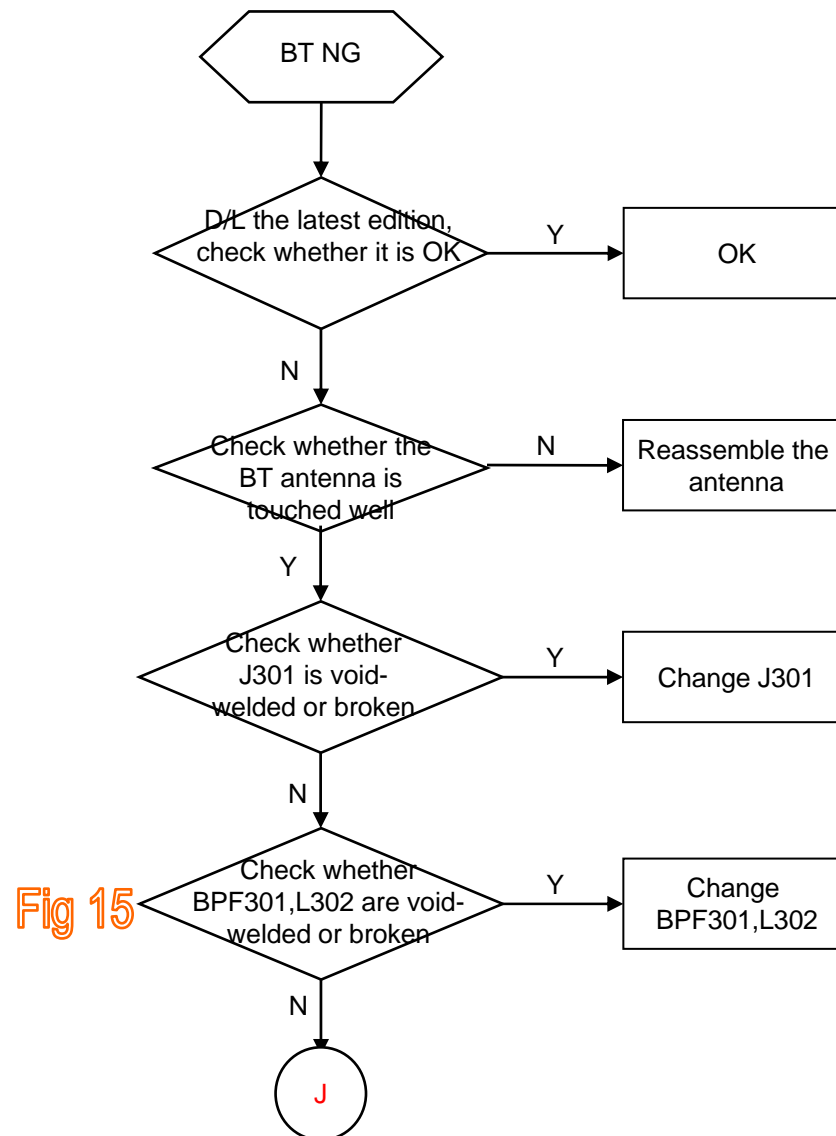


Fig 14



➤ Bluetooth inefficacy



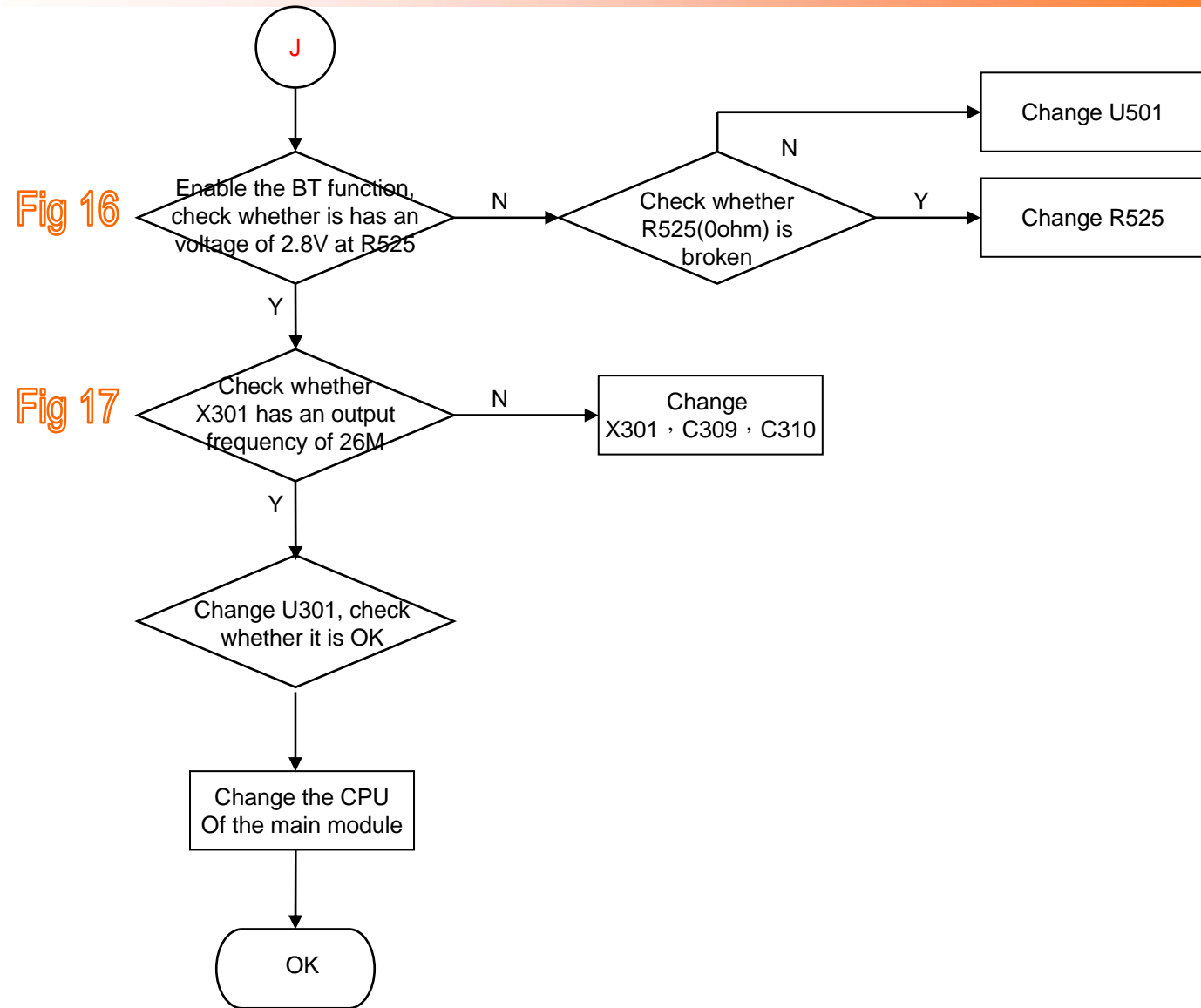




Fig 15

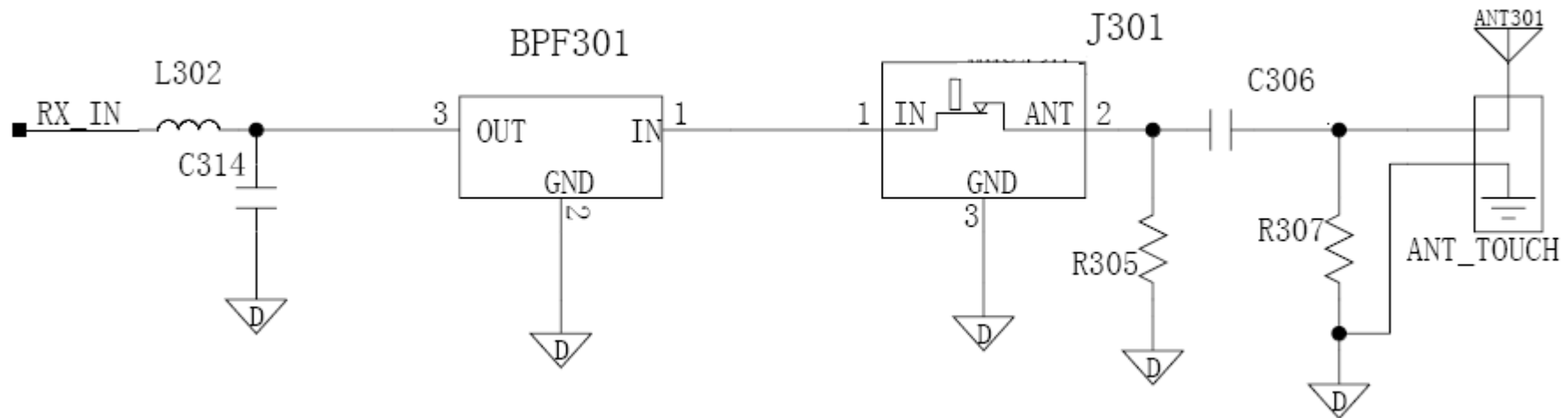




Fig 16

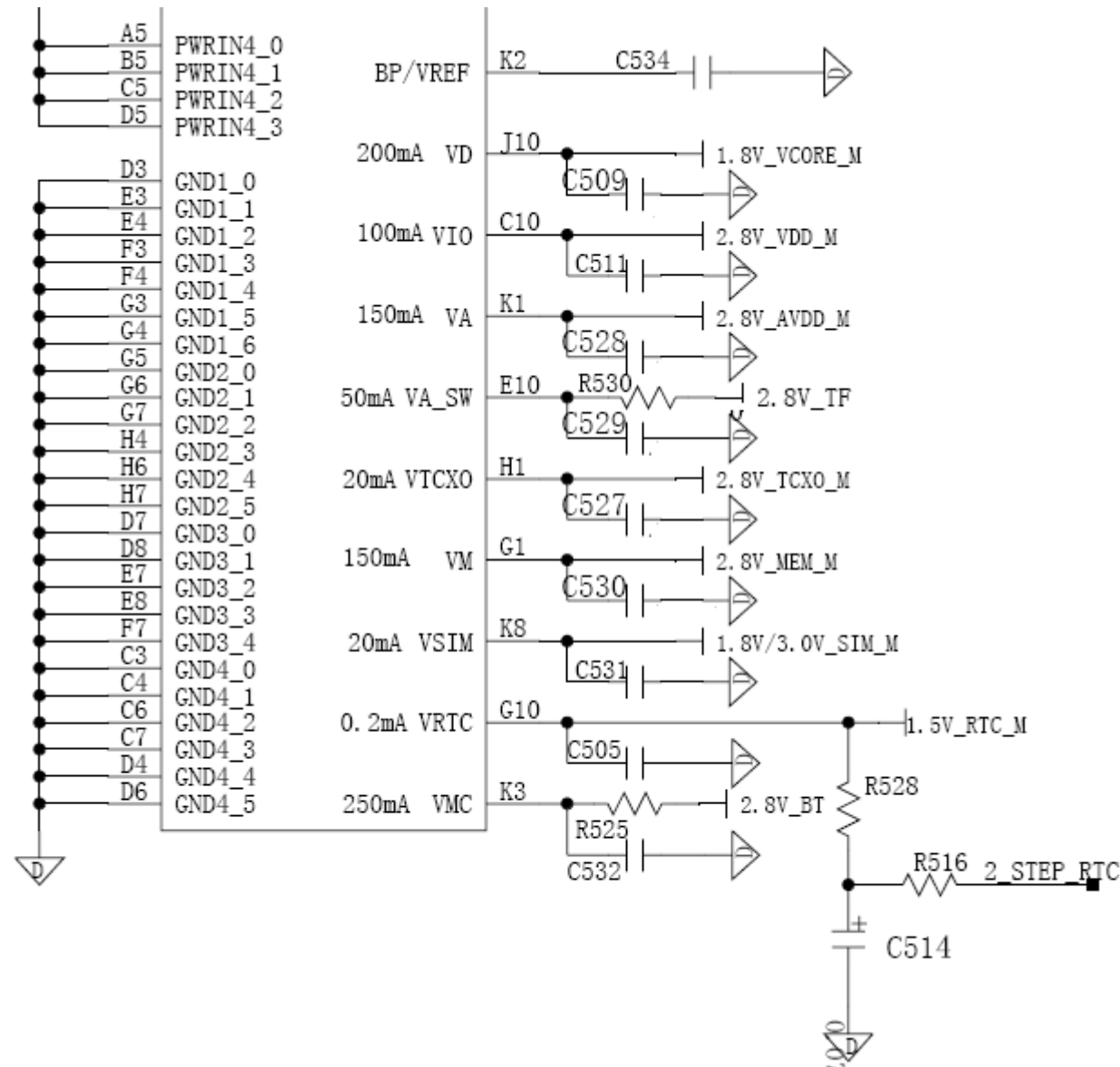
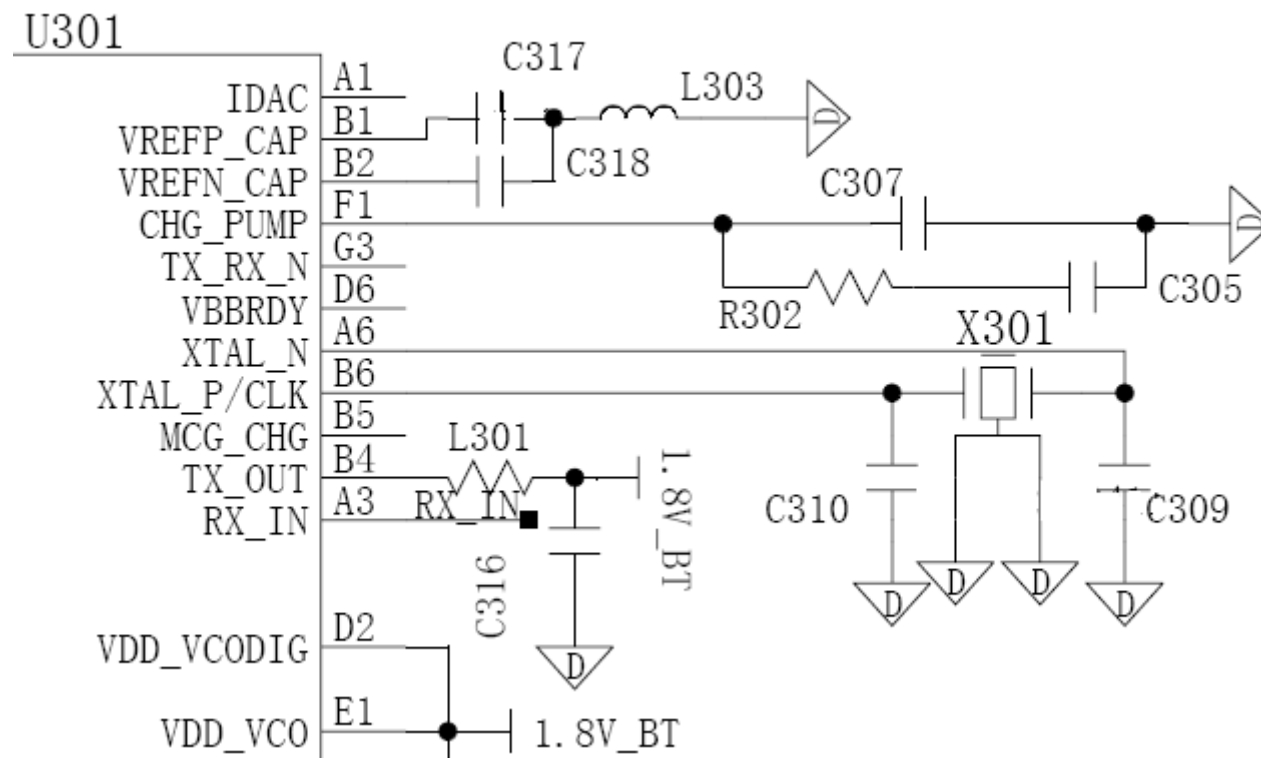


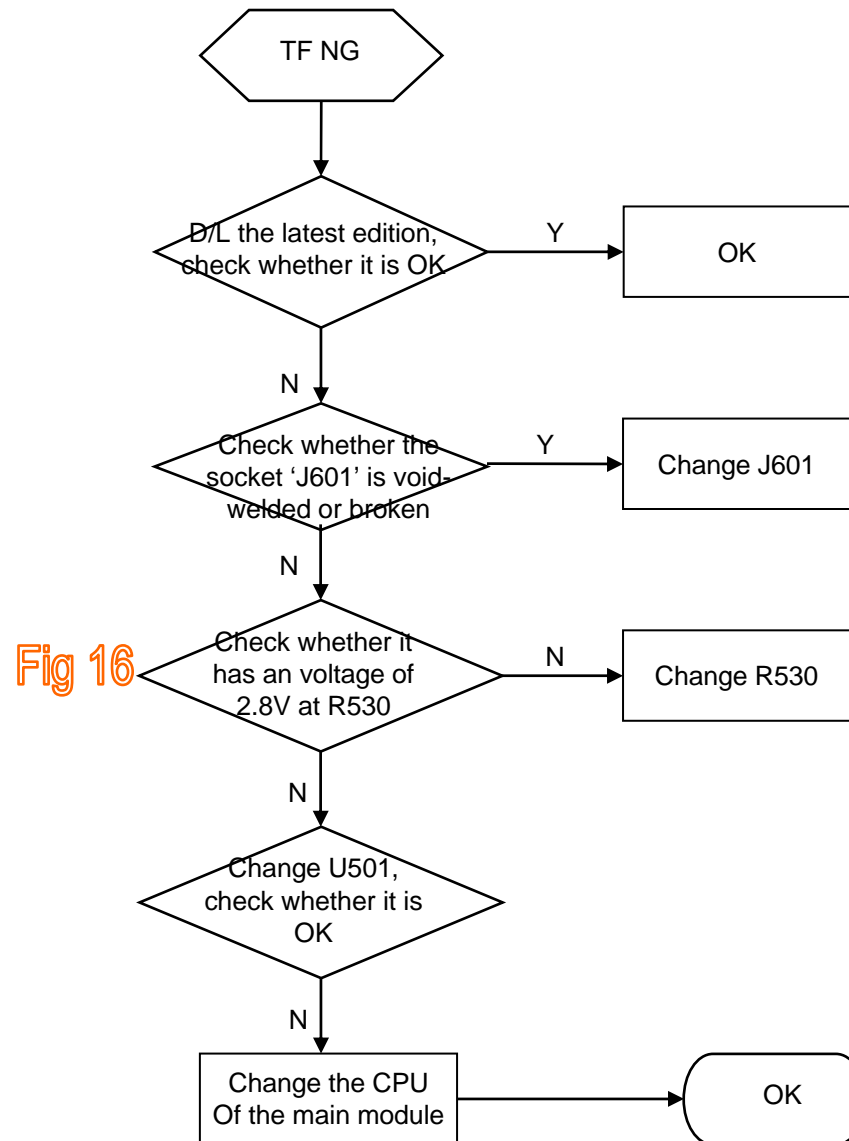


Fig 17





➤ TF card inefficacy





Inventec Appliances Corp.

英華達股份有限公司

Thanks.