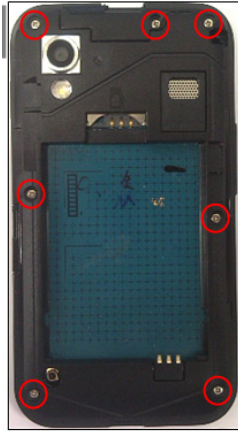


7. Level 2 Repair

7-1. Disassembly

1

1) Unscrew the 7 points.



2

1) Disassemble the REAR CASE like below picture.
Lift the REAR CASE from below.



Caution

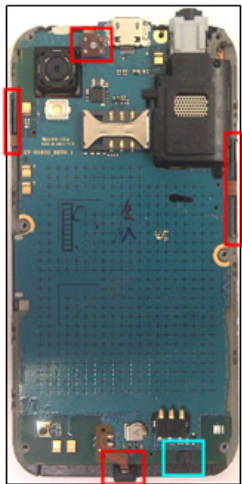
1) Be care of scratch and molding damage.

Caution

1) Be care of scratch and molding damage.

3

1) Detach the 2 KEY FPCB .
2) Separate the LCD connector.
3) Lift the MIC FPCB



Caution

1) Be care of scratch and molding damage.
2) Be care of damage to the FPCB.

4

1) Separate the LCD connector.

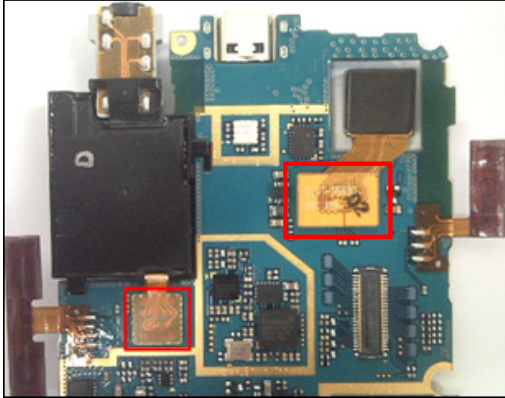


Caution

1) Be care of scratch and molding damage.
2) Be care of damage to the FPCB.

5

1) Separate the EARJACK connector and CAMERA connector from PBA.

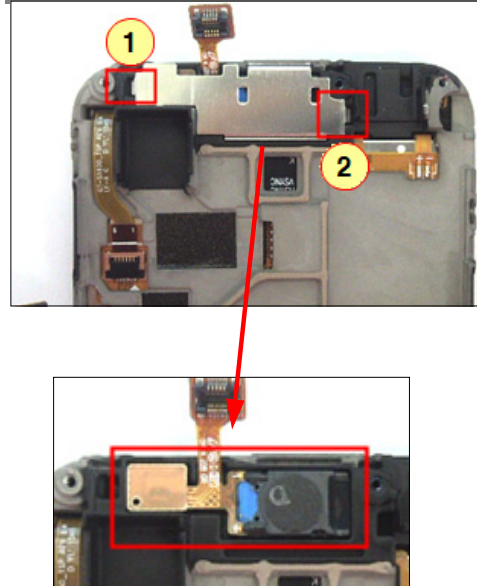


Caution

- 1) Be care of damage to the EARJACK Module.
- 2) Be care of damage to the CAMERA.

6

1) Disassemble the SUS and RCV from BRACKET.

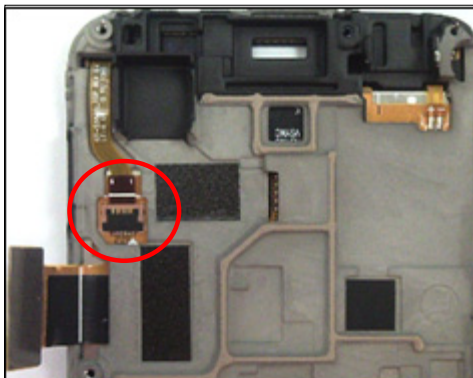


Caution

- 1) Be care of damage to RCV.

7

1) Open the TSP connector then separate TSP from BRACKET.



- 1) Be care of damage to the TSP FPCB.

8

1) Remove LCD from BRACKET.

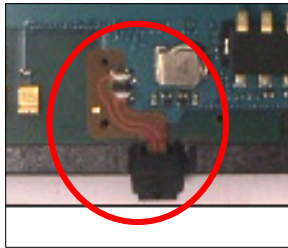


- 1) Be care of scratch and molding damage.
- 2) Be care of damage to the TSP & LCD.

7-2. Assembly

1

1) Solder the MIC.

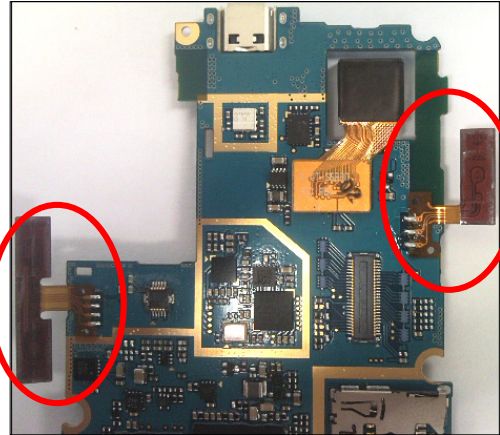


Caution

1) Be care of damage the FPCB.

2

1) Solder the VOLUME KEY & POWER KEY FPCB.

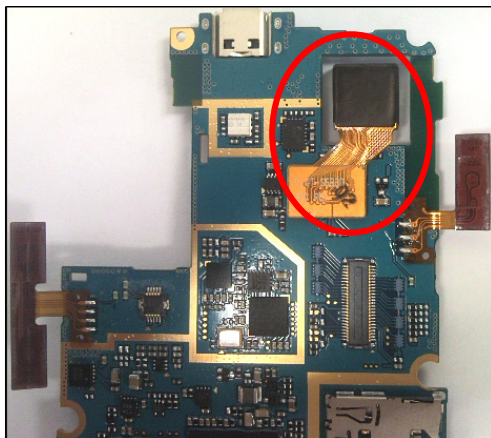


Caution

1) Be care of damage to PBA and MOTOR wire

3

1) Assemble the CAMERA.

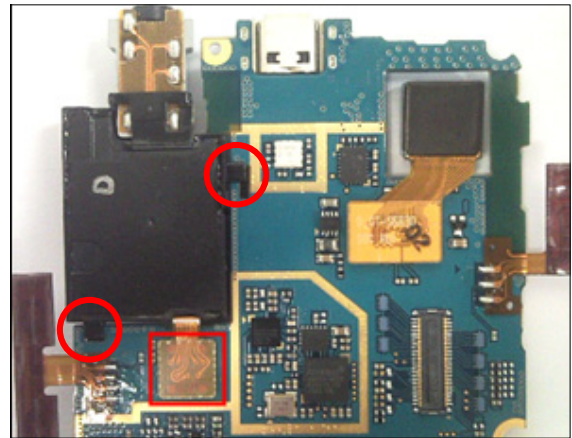


Caution

1) Be care of damage to PBA.
2) Be care of damage to CAMERA.

4

1) Assemble the EARJACK module and connector.



Caution

1) Be care of damage to PBA.

5

1) Place LCD on the BRACKET.



Caution

1) Be care of damage to LCD FPCB.

6

1) Pass FPCB to BRACKET hole and then attach the TSP to BRACKET using JIG.

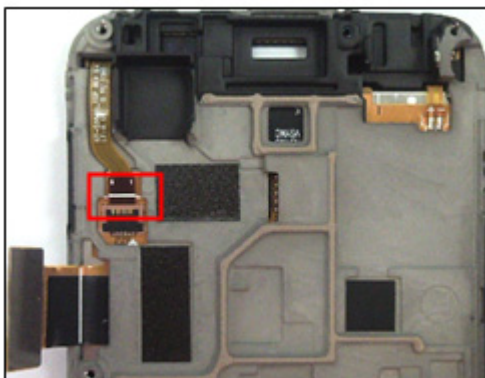


Caution

1) Be care of damage the TSP FPCB.
2) Be care of scratch and molding damage.

7

Connect the TSP connector.

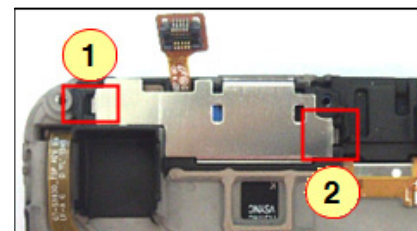
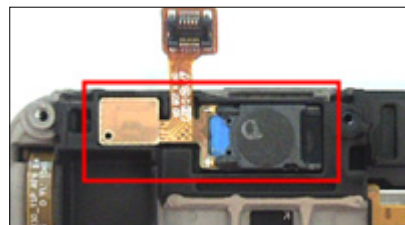


Caution

1) Be care of scratch and molding damage.
2) Be care of TSP Fpcb damage.

8

1) Put the RCV to BRACKET.
2) Assemble the SUS to BRACKET.

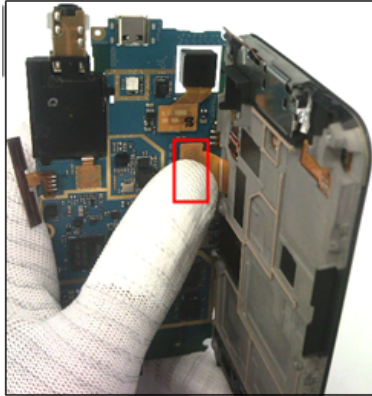


Caution

1) Be care of damage the RCV.
2) Be care of scratch and molding damage.

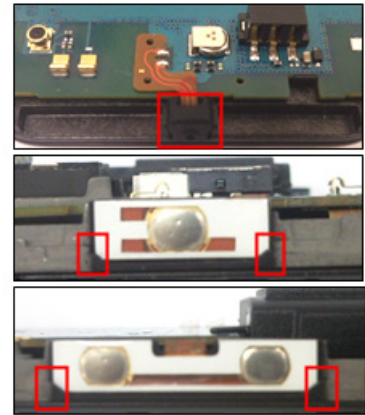
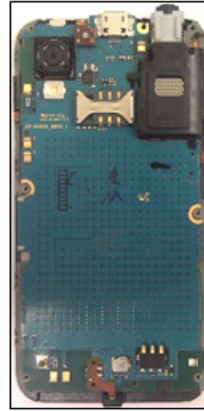
9

1) Connect the LCD connector.



10

1) Put the PBA to the BRACKET
 2) Attach two KEYFPCB to the BRACKET and place the MIC.



Caution

- 1) Be care of scratch and molding damage.
- 2) Be care of damage to LCD FPCB.

Caution

- 1) Be care of scratch and molding damage.
- 2) Be care of damage to FPCB.

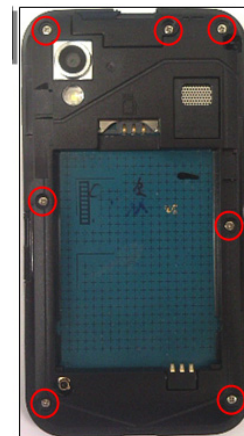
11

1) Assemble the REAR from upside.



12

1) Screw 7 points.
 .. Torque : 1.0 ~ 1.2 Kgf-cm
 Size : M1.4 * L4.0



Caution

- 1) Be care of scratch and molding damage.

Caution

- 1) Be care of scratch and molding damage.