

7. Level 2 Repair

7-1. Disassembly

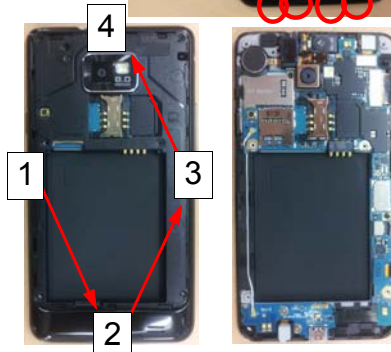
1



Carefully release the screws at 7 different locations from the rear cover.
(Torque: 1.1 ± 0.1 kgf.cm) (Size: M1.4*L3)

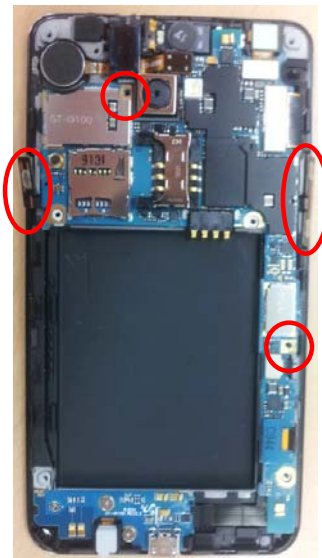
Be careful not to scratch rear cover.

2



Disengage the rear cover from the front cover by using the hook at 12 points that colored in red (Follow the numbered sequence when you disjoint)

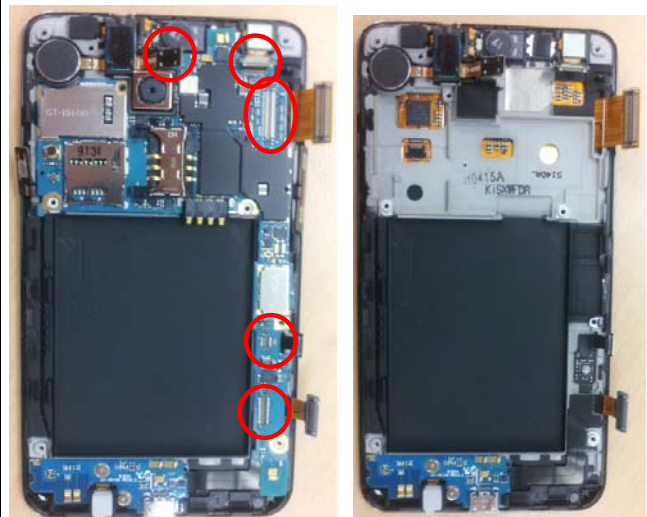
3



Separate the coaxial cable of antenna assembly from the PBA.
Release the screw at 2 points (Size: M1.4*L3)
(Torque: 1.1 ± 0.1 kgf.cm)
Detach the side FPCBs from the Bracket.

Be careful not to damage the FPCBs.

4



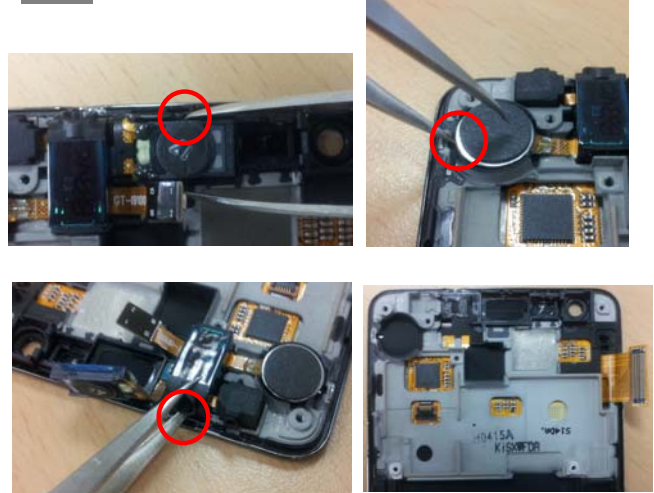
Separate all connector ribbons from the PBA.
Separate the PBA from the Front.

5



Release the screw at 2 points (Size: M1.4*L2)
(Torque: 1.1±0.1 kgf.cm)
Separate the sub PBA from the PBA.

6

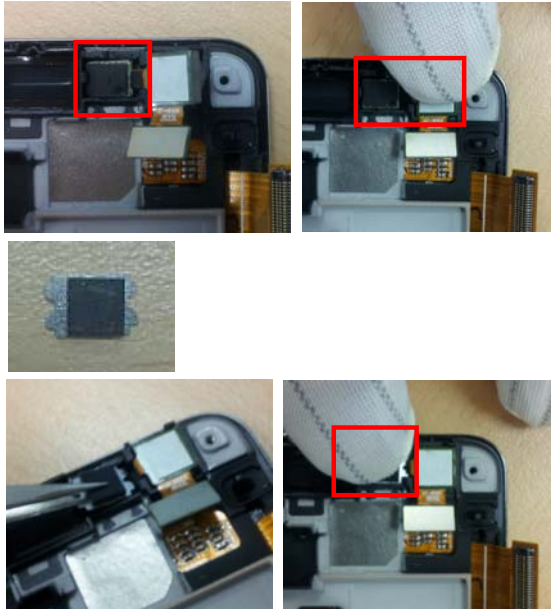


Separate the Receiver assembly from the Front.
(Insert a long nose tweezers into the holes for
easy separation.)

Be careful not to damage the FPCBs.

7-2. Assembly

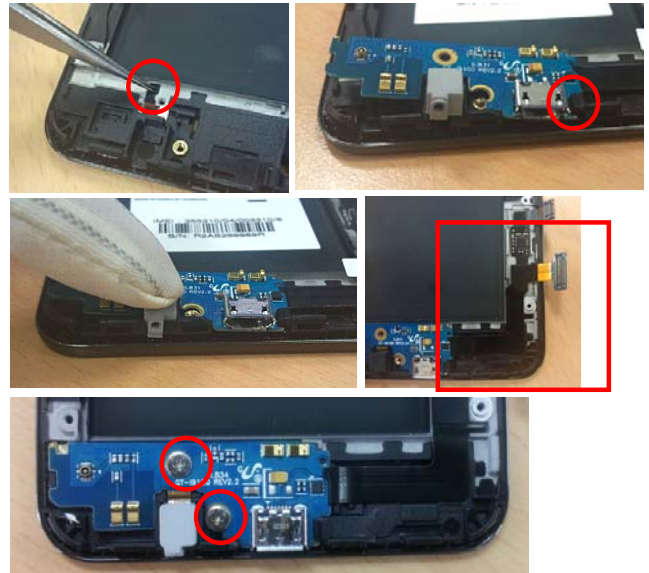
1



Insert the VGA Ass'y in the Front.
Put the chassis on the sensor.

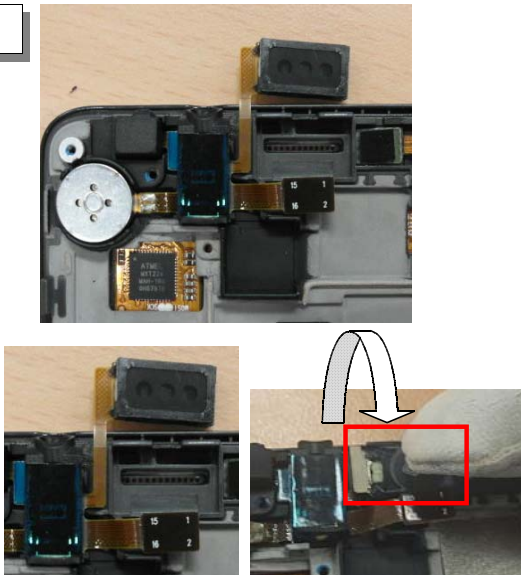
Be careful not to damage the camera FPCB.

2



Attach the FPCB on the Front.
Insert the sub PBA in the hook.
Attach the FPCB on the Front.
Screw 2 points.(Size: M1.4*L2)
(Torque: 1.1±0.1 kgf.cm)

3



Put the Receiver Ass'y on the Front.
Furl the Receiver and put it on the Front.

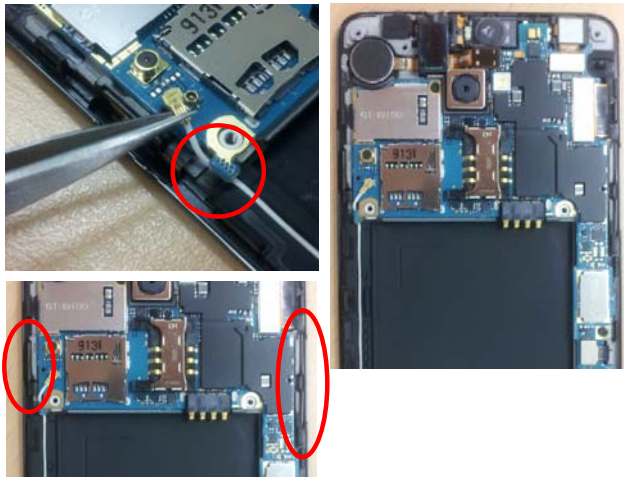
Be careful to damage the FPCB.

4



Connect the cable on the sub PBA.
Organize the cable on the Front

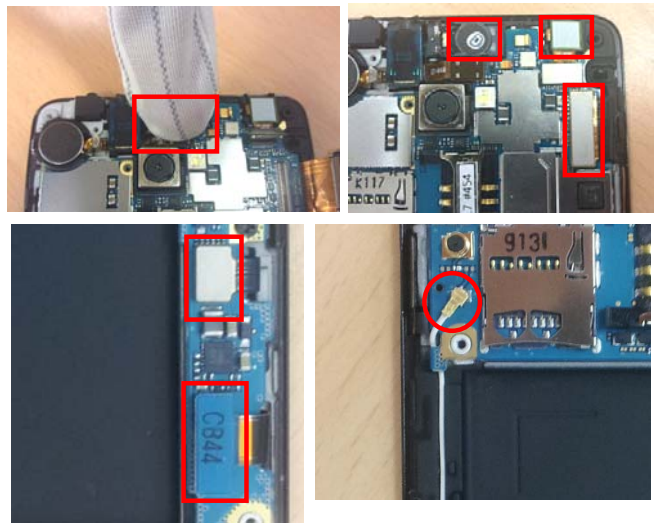
5



Put the PBA on the Front.
Attach the side FPCBs on the Bracket.

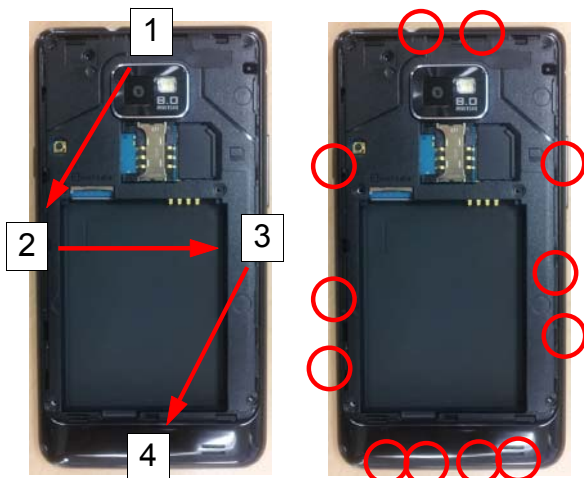
Be careful to damage the cable.

6



Connect all the connector on the PBA.
Connect the cable on the PBA.

7



Assemble the Rear and the Front.
(Follow the order)
Hook at the 12 points.

8



Screw at 7 points.
(Torque: 1.1 ± 0.1 kgf.cm)
(Size: M1.4*L3)

Be careful not to scratch rear cover.