

ZZZ2  
PCB  
M/B  
DAZ@

ZZZ1  
LA-7072P  
M/B  
DA@

ZZZ3  
LS-7072P  
LED/B  
DA@

ZZZ4  
LS-7073P  
TP/B  
DA@

11/18  
LA-7072P P/N from DA60000LA00 to DA60000LA10  
LS-7072P P/N from DA40000Z300 to DA40000Z310  
LS-7073P P/N from DA40000Z400 to DA40000Z410

11/22  
LS-7073P P/N from DA40000Z410 to DA20000Z410

11/18 ZZZ2 for DAZ P/N:DAZ0IV00101

# Compal Confidential

## P0VE6 LA7072P Schematics Document

AMD Ontario Processor with DDRIII + Hudson M1

10.1" M/B

2010-11-18

Rev : 1.0

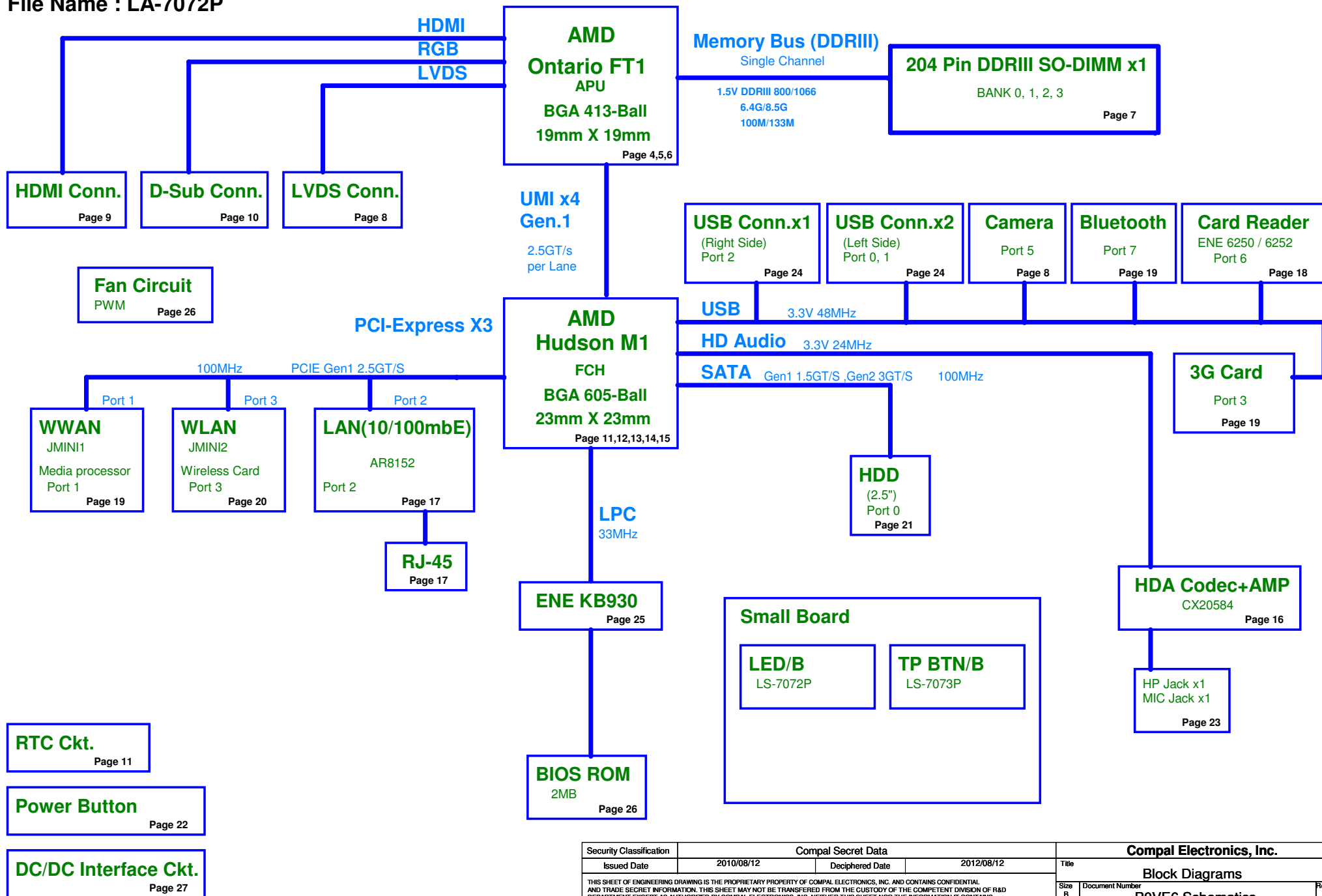
Security Classification		Compal Secret Data		Compal Electronics, Inc.	
Issued Date	2010/08/12	Deciphered Date	2012/08/12	Title	
THIS SHEET OF ENGINEERING DRAWING IS THE PROPRIETARY PROPERTY OF COMPAL ELECTRONICS, INC. AND CONTAINS CONFIDENTIAL AND TRADE SECRET INFORMATION. THIS SHEET MAY NOT BE TRANSFERRED FROM THE CUSTODY OF THE COMPETENT DIVISION OF R&D DEPARTMENT EXCEPT AS AUTHORIZED BY COMPAL ELECTRONICS, INC. NEITHER THIS SHEET NOR THE INFORMATION IT CONTAINS MAY BE USED BY OR DISCLOSED TO ANY THIRD PARTY WITHOUT PRIOR WRITTEN CONSENT OF COMPAL ELECTRONICS, INC.				Size	Document Number
				Custom	P0VE6 Schematics
				Date:	Monday, November 22, 2010
				Sheet	1 of 36
				Rev	1.0

# Compal Confidential

Model Name : P0VE6 / P0VH6

File Name : LA-7072P

## Brazos Platform



Security Classification				Compal Secret Data				Compal Electronics, Inc.			
Issued Date		2010/08/12		Deciphered Date		2012/08/12		Title			
THIS SHEET OF ENGINEERING DRAWING IS THE PROPRIETARY PROPERTY OF COMPAL ELECTRONICS, INC. AND CONTAINS CONFIDENTIAL AND TRADE SECRET INFORMATION. THIS SHEET MAY NOT BE TRANSFERRED FROM THE CUSTODY OF THE COMPETENT DIVISION OF R&D DEPARTMENT EXCEPT AS AUTHORIZED BY COMPAL ELECTRONICS, INC. NEITHER THIS SHEET NOR THE INFORMATION IT CONTAINS MAY BE USED BY OR DISCLOSED TO ANY THIRD PARTY WITHOUT PRIOR WRITTEN CONSENT OF COMPAL ELECTRONICS, INC.								Block Diagrams			
Size		Document Number						P0VE6 Schematics			
Date:		Monday, November 15, 2010		Sheet		2		Rev 1.0			

Voltage Rails

Power Plane	Description	S1	S3	S5
VIN	Adapter power supply (19V)	N/A	N/A	N/A
B+	AC or battery power rail for power circuit.	N/A	N/A	N/A
+APU_CORE	Core voltage for CPU (0.7-1.2V)	ON	OFF	OFF
+APU_CORE_NB	1.0V switched power rail	ON	OFF	OFF
+1.5V	1.5V power rail for CPU VDDIO and DDRIII	ON	ON	OFF
+0.75VS	0.75VS switched power rail for DDR terminator	ON	OFF	OFF
+1.05VS	1.05V switched power rail for NB VDDC & VGA	ON	OFF	OFF
+1.1VS	1.1VS switched power rail	ON	OFF	OFF
+1.8VS	1.8V switched power rail	ON	OFF	OFF
+3VALW	3.3V always on power rail	ON	ON	ON*
+1.1VALW	1.1V always on power rail	ON	ON	ON*
+3VS	3.3V switched power rail	ON	OFF	OFF
+1.5VS	1.5VS switched power rail	ON	OFF	OFF
+5VALW	5V always on power rail	ON	ON	ON*
+5VS	5V switched power rail	ON	OFF	OFF
+VSB	VSB always on power rail	ON	ON	ON*
+RTCBATT	RTC power	ON	ON	ON

Note : ON\* means that this power plane is ON only with AC power available, otherwise it is OFF.

EC SM Bus1 address			EC SM Bus2 address		
Device	Address	HEX	Device	Address	HEX
Smart Battery	0001-011xb	16H	SB-TSI	1001-100xb	98H

SM Bus Controller 0		
	(FCH_SMB1 ~ FCH_SMB4, SMB_ALERT#)	
Device	Address	HEX
APU SIC/SID (FCH_SMB3)		
H_THERMTRIP# (FCH_ALERT#)		

SM Bus Controller 1		
	(FCH_SMB0)	
Device	Address	HEX
DDR DIMM1 (FCH_SMB0)	1001-000xb	90

BOM Structure

HDMI@ : HDMI function  
BT@ : BT function  
CONN@ : Conneters  
45@ : 45 Level  
3G@ : 3G function  
3G\_MP@: 3G & Media processor function  
CHARGE@: Charge BATT  
NONCHARGE@: nonCharge BATT

FCH Hudson-M1 USB Port List	
USB1.1	
Port0	NC
Port1	NC
USB2.0	
Port0	Right USB2
Port1	Right USB3
Port2	Left USB1
Port3	WWAN
Port4	SIM
Port5	USB Camera
Port6	CardReader
Port7	BT
Port8	WiMax
Port9	NC
Port10	NC
Port11	NC
Port12	NC
Port13	NC

Brazos PCIE Port List		
APU	PCIE0	NC
	PCIE1	
	PCIE2	
	PCIE3	
FCH	PCIE0	NC
	PCIE1	WWAN
	PCIE2	LAN
	PCIE3	WLAN

FCH Hudson-M1 SATA Port List	
SATA0	HDD
SATA1	NC
SATA2	NC
SATA3	NC
SATA4	NC
SATA5	NC

Board ID / SKU ID Table for AD channel

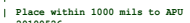
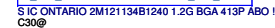
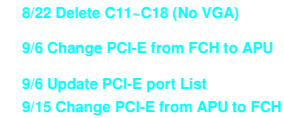
Vcc	+3VALW				
Ra	100K +/- 5%				
Board ID	Rb	VAD_BID min	VAD_BID typ	VAD_BID max	PCB Revision
0	0	0 V	0 V	0 V	0.1
1	8.2K +/- 5%	0.216 V	0.250 V	0.289 V	0.2
2	18K +/- 5%	0.436 V	0.503 V	0.538 V	
3	33K +/- 5%	0.712 V	0.819 V	0.875 V	
4	56K +/- 5%	1.036 V	1.185 V	1.264 V	
5	100K +/- 5%	1.453 V	1.650 V	1.759 V	
6	200K +/- 5%	1.935 V	2.200 V	2.341 V	
7	NC	2.500 V	3.300 V	3.300 V	

SMBUS Control Table

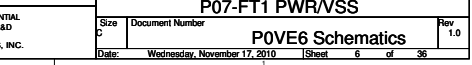
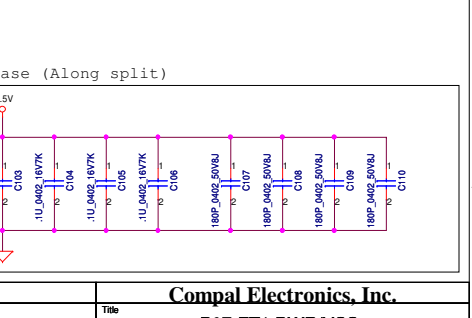
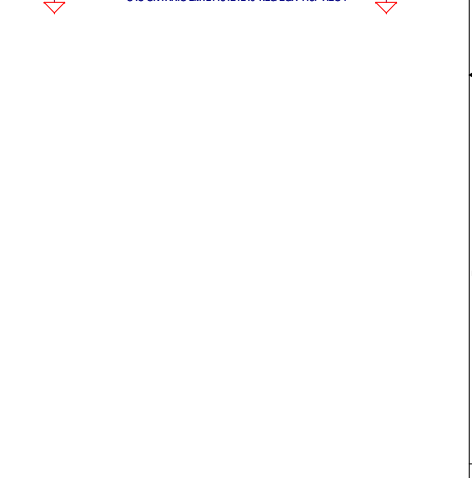
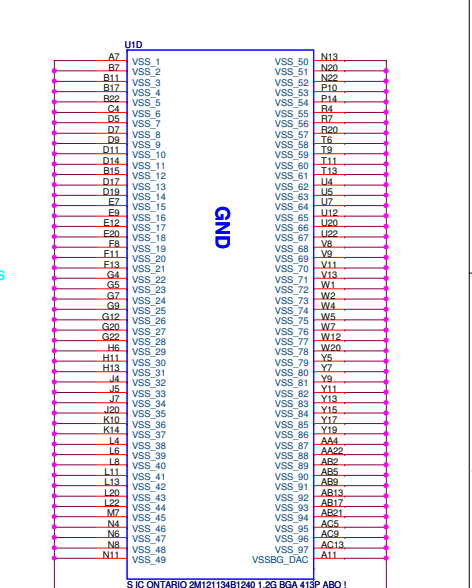
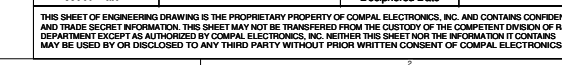
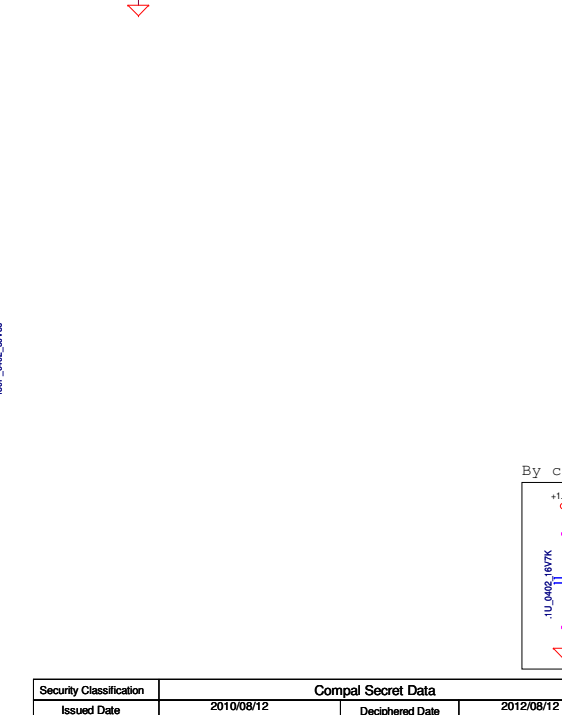
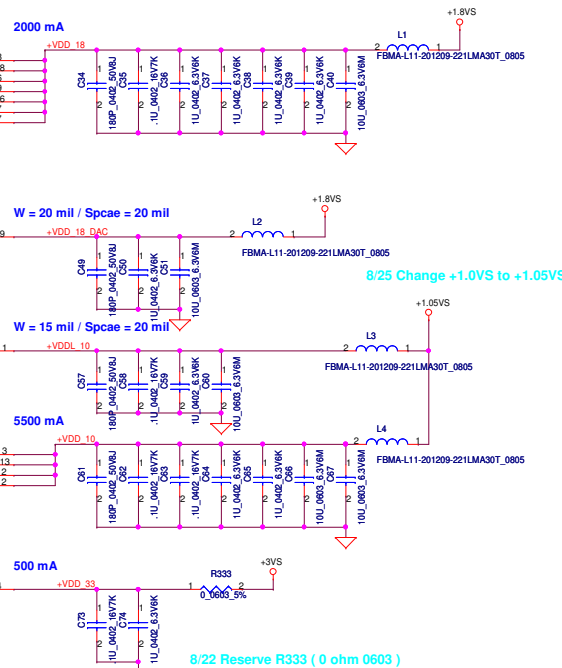
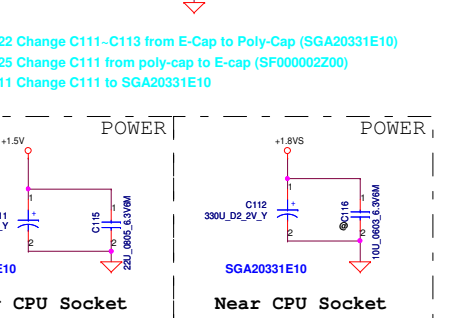
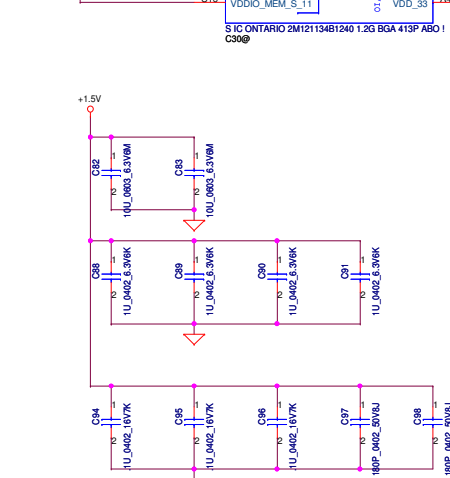
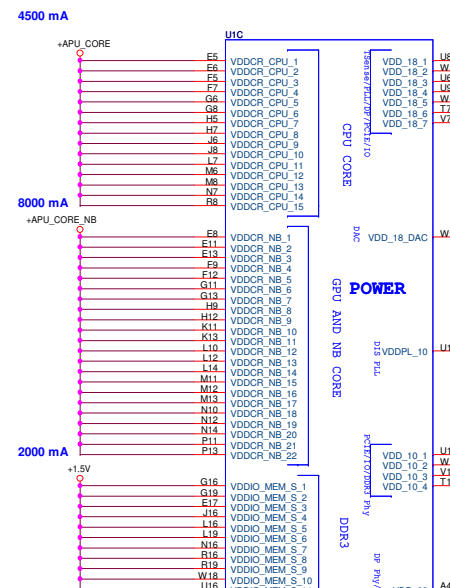
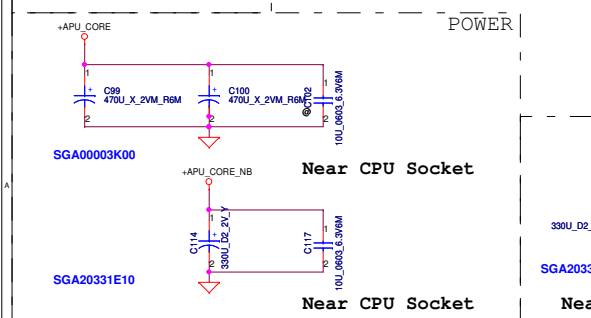
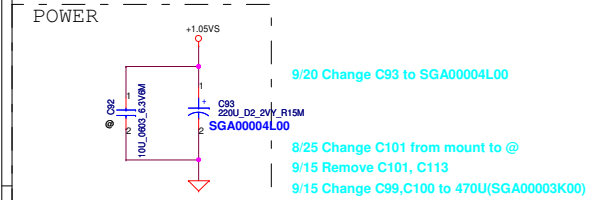
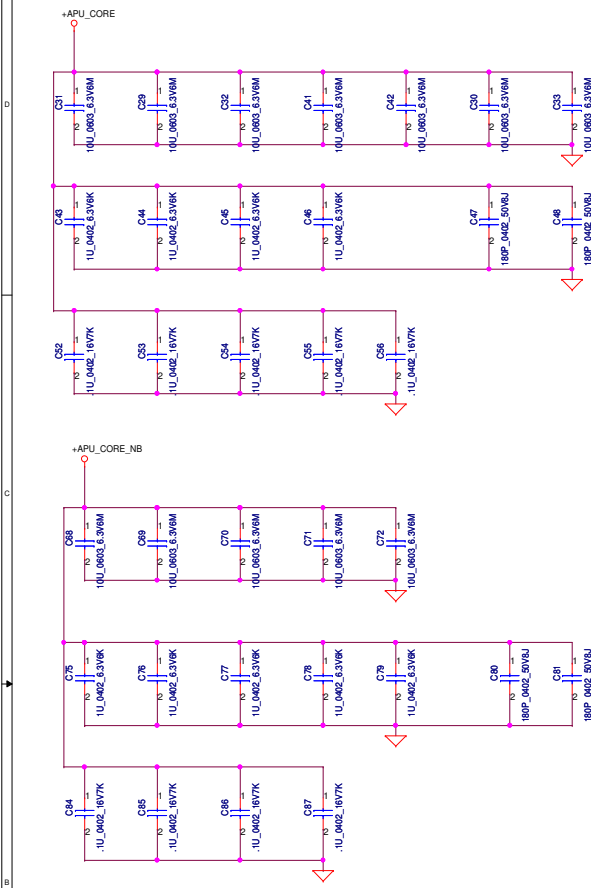
	Source	BATT	DIMM	MINI Card	LCD DDC ROM	HDMI DDC ROM	APU
EC_SMB_CK1 EC_SMB_DA1	KB930	V					
EC_SMB_CK2 EC_SMB_DA2	KB930						V
HDMI_DATA HDMI_CLK	APU FT1					V	
EDID_DATA EDID_CLK	APU FT1				V		
FCH_SMDAT0 FCH_SMCLK0	FCH M1		V	V			

Security Classification	Compal Secret Data			Compal Electronics, Inc.		
Issued Date	2010/08/12	Deciphered Date	2012/08/12	Title		
THIS SHEET OF ENGINEERING DRAWING IS THE PROPRIETARY PROPERTY OF COMPAL ELECTRONICS, INC. AND CONTAINS CONFIDENTIAL AND TRADE SECRET INFORMATION. THIS SHEET MAY NOT BE TRANSFERRED FROM THE CUSTODY OF THE COMPETENT DIVISION OF R&D DEPARTMENT EXCEPT AS AUTHORIZED BY COMPAL ELECTRONICS, INC. NEITHER THIS SHEET NOR THE INFORMATION IT CONTAINS MAY BE USED BY OR DISCLOSED TO ANY THIRD PARTY WITHOUT PRIOR WRITTEN CONSENT OF COMPAL ELECTRONICS, INC.				Notes List		
				Size B	Document Number	Rev 1.0
				POVE6 Schematics		
				Date:	Monday, November 15, 2010	Sheet 3 of 36





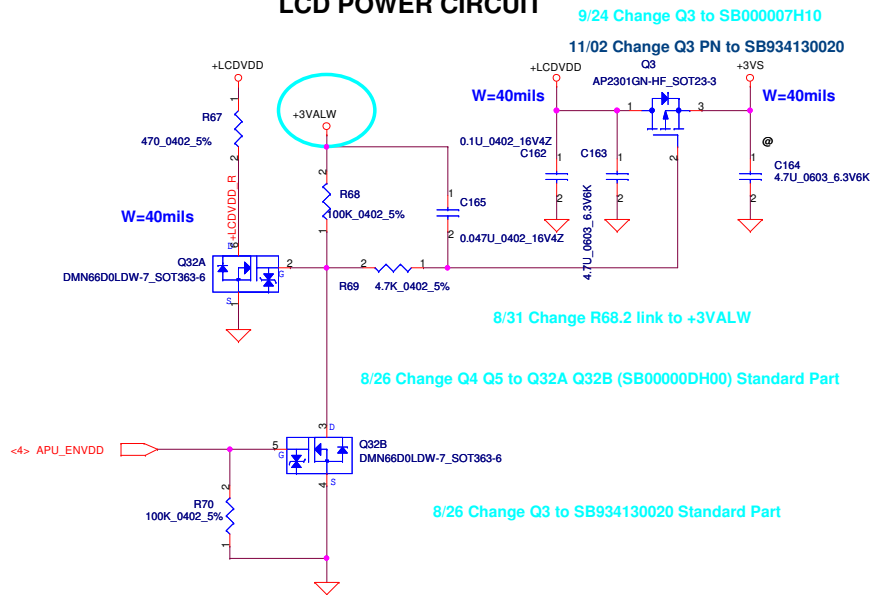
Security Classification		Compal Secret Data		Compal Electronics, Inc. FT1 DDRIII/UM/PCIE		
Issued Date	2010/08/12	Deciphered Date	2012/08/12			
THIS SHEET OF ENGINEERING DRAWING IS THE PROPRIETARY PROPERTY OF COMPAL ELECTRONICS, INC. AND CONTAINS CONFIDENTIAL AND TRADE SECRET INFORMATION. THIS SHEET MAY NOT BE TRANSFERRED FROM THE CUSTODY OF THE COMPETENT DIVISION OF R&D DEPARTMENT EXCEPT AS AUTHORIZED BY COMPAL ELECTRONICS, INC. NEITHER THIS SHEET NOR THE INFORMATION IT CONTAINS MAY BE USED BY OR DISCLOSED TO ANY THIRD PARTY WITHOUT PRIOR WRITTEN CONSENT OF COMPAL ELECTRONICS, INC.				Title		
				FT1 DDRIII/UM/PCIE		
				Size Custom	Document Number P0VE6 Schematics	
Date:				Wednesday, November 17, 2010		
				Sheet 5 of 36		



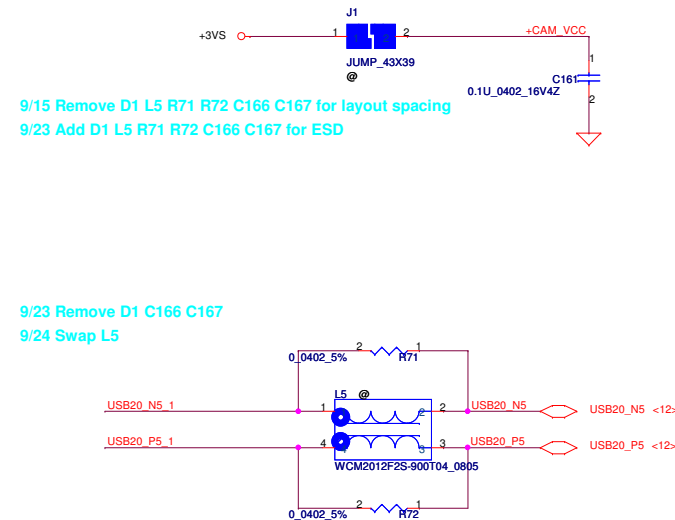
Security Classification		Compal Secret Data		Title	
Issued Date		Deciphered Date		P07-FT1 PWR/VSS	
2010/08/12		2012/08/12		P0VE6 Schematics	
This sheet of engineering drawing is the proprietary property of Compal Electronics, Inc. and contains confidential and trade secret information. This sheet may not be transferred from the custody of the competent division of R&D Department except as authorized by Compal Electronics, Inc. Neither this sheet nor the information it contains may be used by or disclosed to any third party without prior written consent of Compal Electronics, Inc.		Sic Ontario 2M121134B1240 1.2G BGA 413P ABO !		Rev 1.0	
C30@		C30@		Wednesday, November 17, 2010	
C30@		C30@		Sheet 6 of 36	



## LCD POWER CIRCUIT



## About Camera



9/9 Reserve 100k PD to GND on INVT PWM 9/17 Change R387 from @ to mount

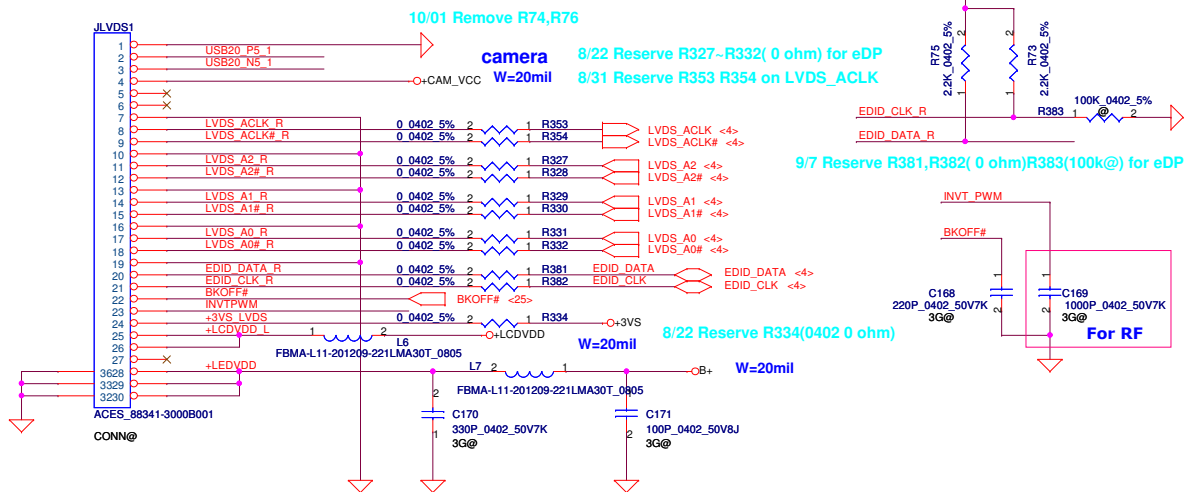
## CMOS & LCD/PANEL BD. Conn.

8/25 JLVDS1.5 change to INT\_MIC0 JLVDS1.6 change to GNDA

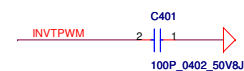
8/31 Update JLVDS1 Pin definition Delete R74 R76

9/13 Update LVDS Pin definition, Add R74,R76

9/13 Add Net Name +3VS\_DMIC



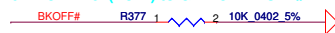
10/04 Add 100p(C401) on INVT\_PWM



10/04 Change C401 on INVT PWM

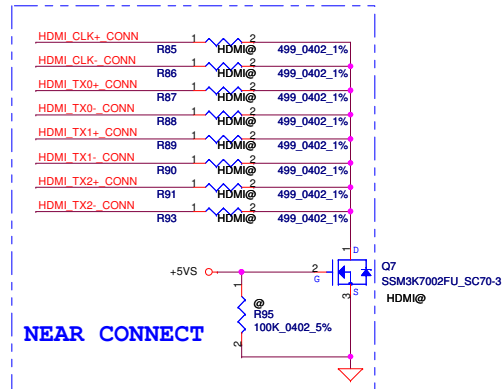
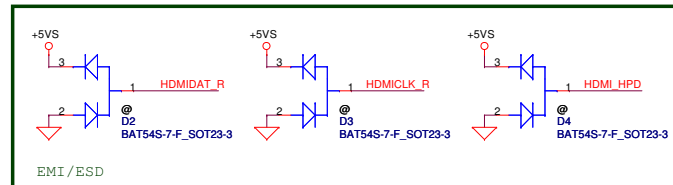
Display	LVDS	eDP
R331	0 ohm	0.1uF
R332	0 ohm	0.1uF
R381	0 ohm	0.1uF
R382	0 ohm	0.1uF
R383	@	100k ohm
R73	2.2k ohm	@
R75	2.2k ohm	100k ohm

9/3 Pull-Down 10k(R377) to GND on BKOFF#

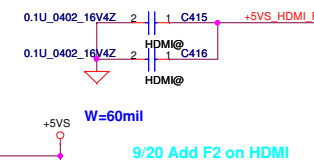


Security Classification	Compal Secret Data		Compal Electronics, Inc.	
Issued Date	2010/08/12	Deciphered Date	2012/08/12	Title
THIS SHEET OF ENGINEERING DRAWING IS THE PROPRIETARY PROPERTY OF COMPAL ELECTRONICS, INC. AND CONTAINS CONFIDENTIAL AND TRADE SECRET INFORMATION. THIS SHEET MAY NOT BE TRANSFERRED FROM THE CUSTODY OF THE COMPETENT DIVISION OF R&D DEPARTMENT EXCEPT AS AUTHORIZED BY COMPAL ELECTRONICS, INC. NEITHER THIS SHEET NOR THE INFORMATION IT CONTAINS MAY BE USED BY OR DISCLOSED TO ANY THIRD PARTY WITHOUT PRIOR WRITTEN CONSENT OF COMPAL ELECTRONICS, INC.				Size B
				Document Number
				P0VE6 Schematics
				Rev 1.0
				Date: Wednesday, November 17, 2010
				Sheet 8 of 36





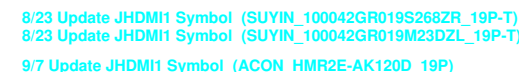
10/29 Add C415~C416(0.1U) on +5VS\_HDMI\_F



**10/27 Change F2 P/N from SP04301P120 to SP040001B00**

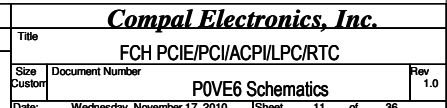
[illegible]

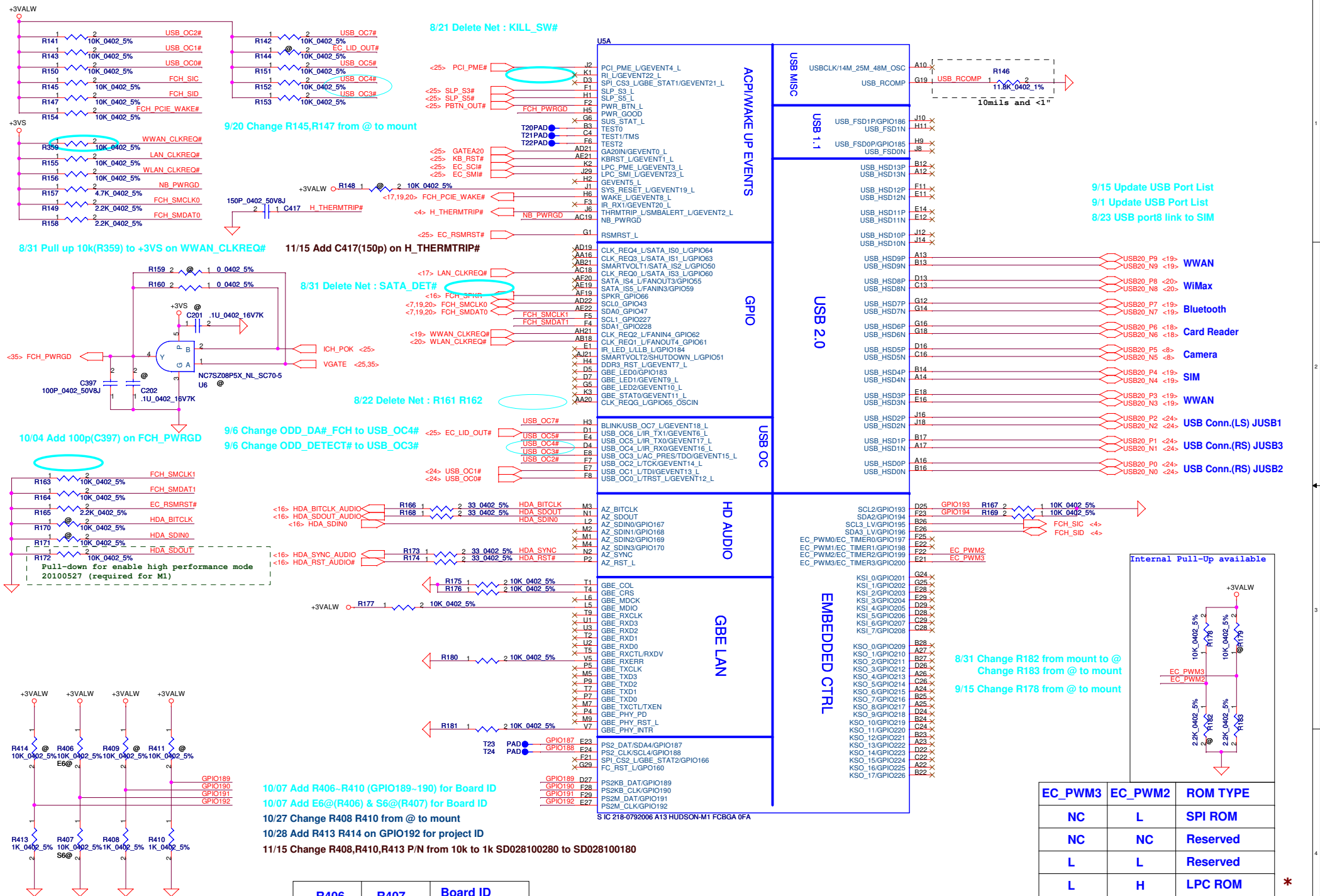
10/07 Update JHDMI1 footprint from ACON\_HMR2E-AK120D\_19P to ACON\_HMR2E-AK120D\_19P-T



Security Classification		Compal Secret Data		Compal Electronics, Inc.		
Issued Date	2010/08/12	Deciphered Date	2012/08/12	Title		
THIS SHEET OF ENGINEERING DRAWING IS THE PROPRIETARY PROPERTY OF COMPAL ELECTRONICS, INC. AND CONTAINS CONFIDENTIAL AND TRADE SECRET INFORMATION. THIS SHEET MAY NOT BE TRANSFERRED FROM THE CUSTODY OF THE COMPETENT DIVISION OF R&D DEPARTMENT EXCEPT AS AUTHORIZED BY COMPAL ELECTRONICS, INC. NEITHER THIS SHEET NOR THE INFORMATION IT CONTAINS MAY BE USED BY OR DISCLOSED TO ANY THIRD PARTY WITHOUT PRIOR WRITTEN CONSENT OF COMPAL ELECTRONICS, INC.				HDMI Connector		
				Size Custom	Document Number	Rev 1.0
				P0VE6 Schematics		
Date:	Wednesday, November 17, 2010		Sheet	9	of	36



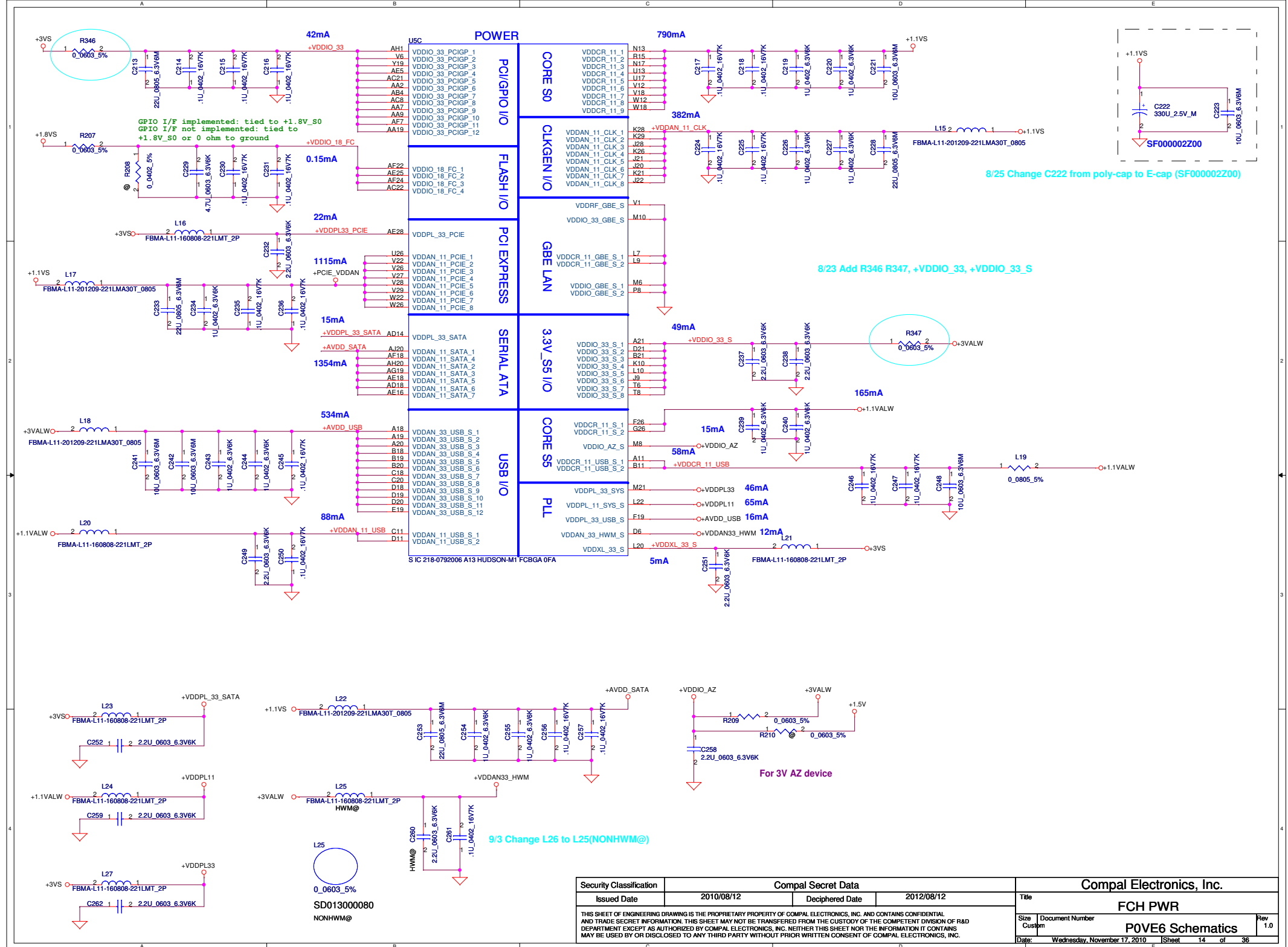




R406	R407	Board ID
mount	@	P0VE6
@	mount	P0VS6

Security Classification	Compal Secret Data		Title	
Issued Date	2010/08/12	Deciphered Date	2012/08/12	Document Number
THIS SHEET OF ENGINEERING DRAWING IS THE PROPRIETARY PROPERTY OF COMPAL ELECTRONICS, INC. AND CONTAINS CONFIDENTIAL AND TRADE SECRET INFORMATION. THIS SHEET MAY NOT BE TRANSFERRED FROM THE CUSTODY OF THE COMPETENT DIVISION OF R&D DEPARTMENT EXCEPT AS AUTHORIZED BY COMPAL ELECTRONICS, INC. NEITHER THIS SHEET NOR THE INFORMATION IT CONTAINS MAY BE USED BY OR DISCLOSED TO ANY THIRD PARTY WITHOUT PRIOR WRITTEN CONSENT OF COMPAL ELECTRONICS, INC.				POVE6 Schematics
Date: Thursday, November 18, 2010				Rev 1.0
Sheet 12 of 36				

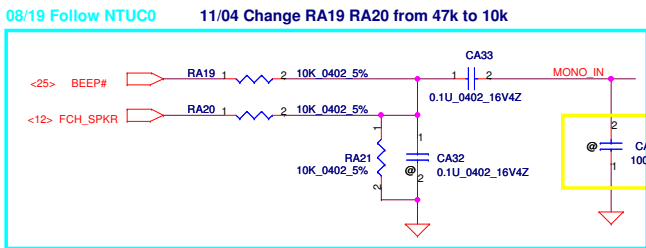








```
Port A: Headphone jack (jack shared with S/PDIF)
Port B: Internal MIC (mono or stereo)
Port C: Microphone/LI/LO jack
Port D: Line Out jack (Optional)
Port E: Line In jack (Optional)
Port F: Not used.
Port G: Internal stereo speakers
Port J: Internal stereo digital mic (Optional)
Port H: S/PDIF (jack shared with headphone)
```



08/21 Follow PAV70

20mil

low PAV70

10/26 Remove DA4 CA46 CA47 RA23 RA24  
10/28 Add JSPK1 (2 pin)

CA18,CA19,CA23,CA25,CA26 to SE000004880 Standard Part  
10/28 Add DA4 CA46 CA47 RA23 RA24

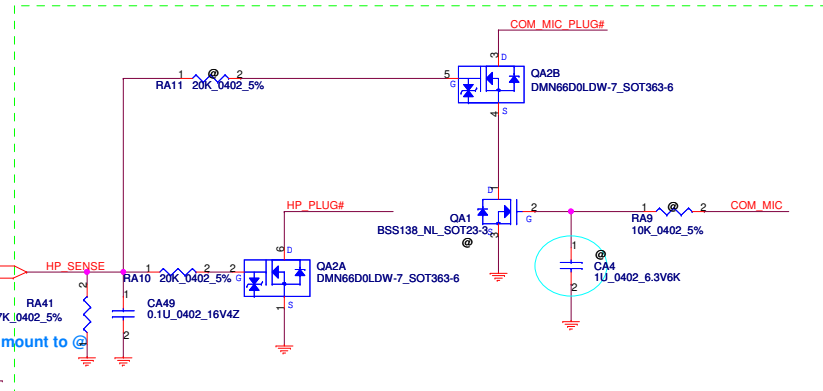
ACES\_88266-04001 CONN@

ACES\_88266-02000 CONN@

10/26 Remove DA4 CA46 CA47 RA23 RA24  
10/28 Add JSPK1 (2 pin)  
10/28 Add DA4 CA46 CA47 RA23 RA24

9/6 Update QA2 symbol  
Combo Jack

11/17 Change RA11, RA9, CA4, QA1 from mount to @

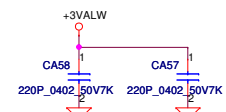


9/1 Add CA49 RA41 on HP SENSE

10/28 Reserve CA57 CA58 for EMI

08/31 Reserve CA48(22P) on HDA SDOUT AUDIO

11/01 Change CA57, CA58 from @ to mount



**Layout Note: close to UA1**

RA51 1 2 0 0402 5% DMIC\_CLK <23>  
RA53 1 2 0 0402 5% DMIC\_DATA <23>

### 9/6 UA1 Pin 1 link to GNDA

### 9/7 Change UA1 Pin1 to GND

9/13 Add RA49 for DMIC

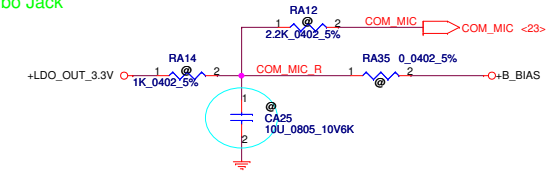
### 9/13 Add RA50~RA53 for DMIC

**10/01 Remove RA50,R52**

### 9/13 Remove Analog MIC circuit

11/17 Change BA12 BA14 CA25 from mount to @

Combo Jack



SA000034010

08/25 Add UA1 PN:SA000034010

10/11 Update UA1 PN:SA000034020

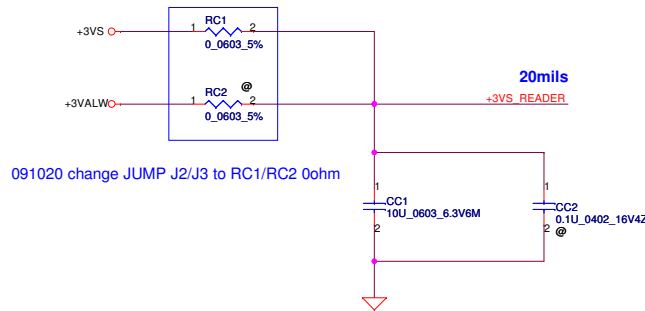
10/12 Update UA1 PN:SA000034010

08/25 Change CA1,CA2,CA3,CA4 to SE000000K80 Standard Part

Security Classification		Compal Secret Data				Compal Electronics, Inc.									
Issued Date		2010/08/12		Deciphered Date		2012/08/12		Title							
THIS SHEET OF ENGINEERING DRAWING IS THE PROPRIETARY PROPERTY OF COMPAL ELECTRONICS, INC. AND CONTAINS CONFIDENTIAL AND TRADE SECRET INFORMATION. THIS SHEET MAY NOT BE TRANSFERRED FROM THE CUSTODY OF THE COMPETENT DIVISION OF R&D DEPARTMENT EXCEPT AS AUTHORIZED BY COMPAL ELECTRONICS, INC. NEITHER THIS SHEET NOR THE INFORMATION IT CONTAINS MAY BE USED BY OR DISCLOSED TO ANY THIRD PARTY WITHOUT PRIOR WRITTEN CONSENT OF COMPAL ELECTRONICS, INC.								Audio Codec CX20584							
								Size		Document Number		P0VE6 Schematics		Rev 1.0	
								Custum							
								Date:		Wednesday, November 17, 2010		Sheet		16 of 36	



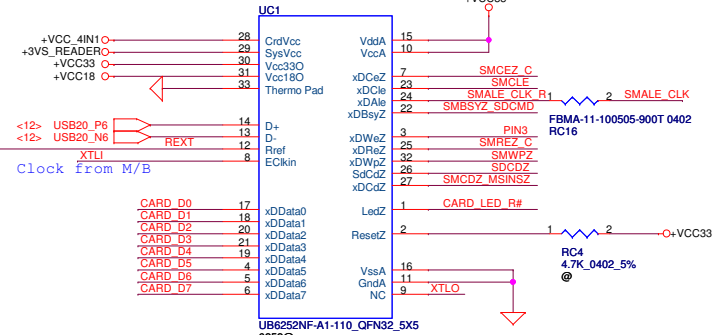




UC1  
UB6250NF-A1-110\_QFN32\_5X5  
SA00003FJ00  
6250@  
8/25 Co-lay UB6252 (6252@)

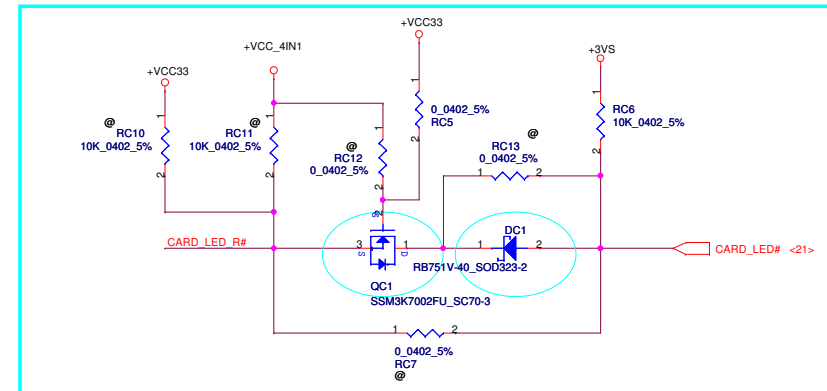
11/15 Change RC16 P/N from SD028000080 to SM010009E00

UC1 close to JREAD1



If use external crystal (YC1),  
UC1 will change to UB6252

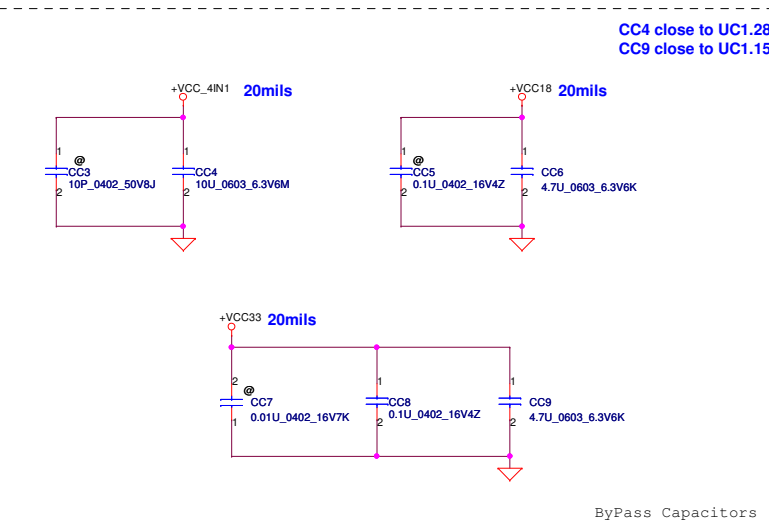
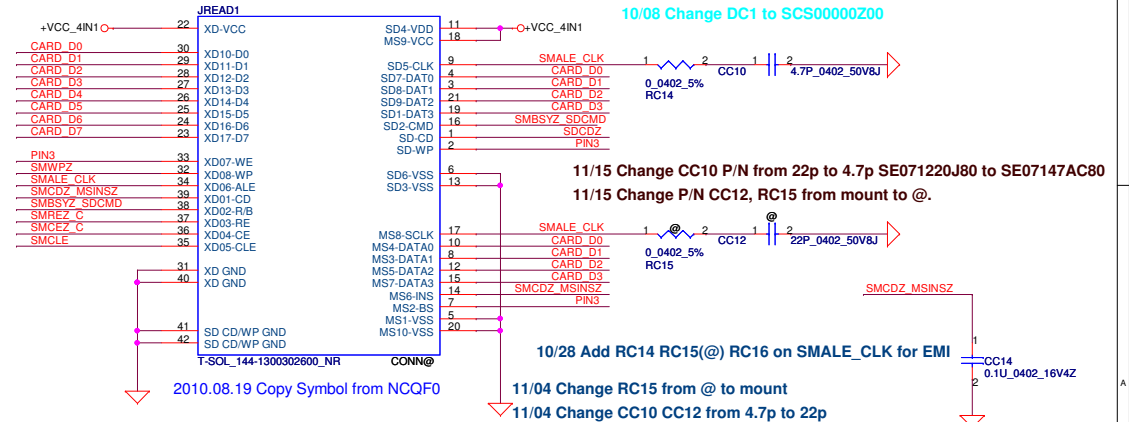
8/24 Card\_LED# Follow PAV70



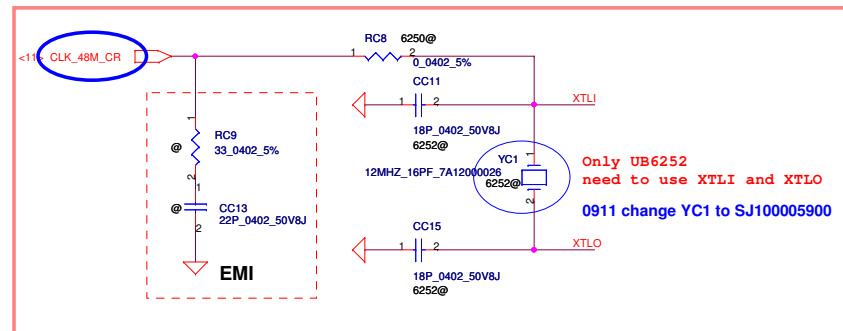
## Card Reader Connector

8/26 Change DC1 to SCS00002G00 Standard Part  
8/26 Change QC1 to SB000009610 Standard Part

10/08 Change DC1 to SCS00000Z00

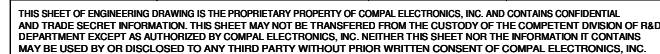


ByPass Capacitors

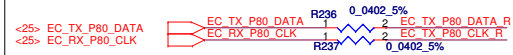


9/2 Change CC11 CC15 from 27P to 18P

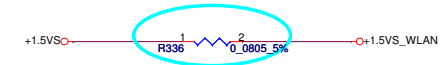
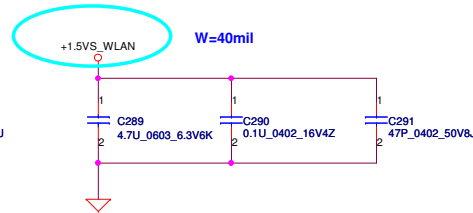
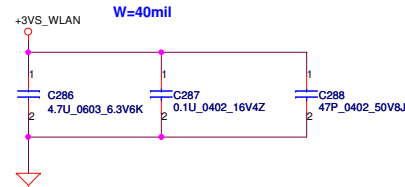
Security Classification		Compal Secret Data		Compal Electronics, Inc.	
Issued Date	2010/08/12	Deciphered Date	2012/08/12	Title	
THIS SHEET OF ENGINEERING DRAWING IS THE PROPRIETARY PROPERTY OF COMPAL ELECTRONICS, INC. AND CONTAINS CONFIDENTIAL AND TRADE SECRET INFORMATION. THIS SHEET MAY NOT BE TRANSFERRED FROM THE CUSTODY OF THE COMPETENT DIVISION OF R&D DEPARTMENT EXCEPT AS AUTHORIZED BY COMPAL ELECTRONICS, INC. NEITHER THIS SHEET NOR THE INFORMATION IT CONTAINS MAY BE USED BY OR DISCLOSED TO ANY THIRD PARTY WITHOUT PRIOR WRITTEN CONSENT OF COMPAL ELECTRONICS, INC.				CARD READER UB6250/6252	
Size		Document Number		P0VE6 Schematics	
Date:		Wednesday, November 17, 2010		Sheet 18 of 36	



# Mini-Express Card for WWAN

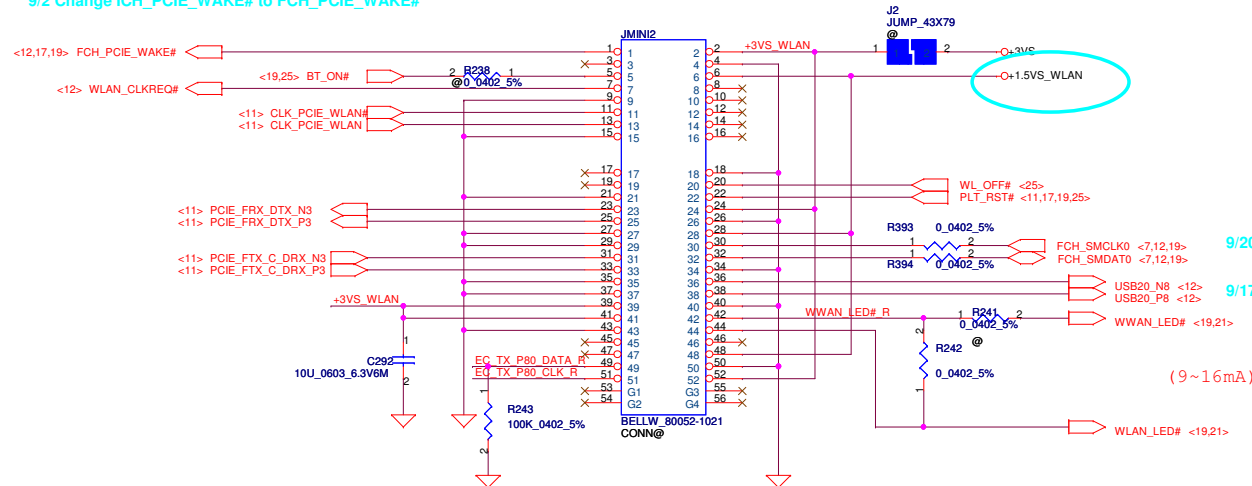


# Mini-Express Card for WLAN



8/22 Reserve R336 (0 ohm 0805) Add net +1.5VS\_WLAN

9/2 Change ICH\_PCIE\_WAKE# to FCH\_PCIE\_WAKE#



9/20 Add R393 R394 for SMBus

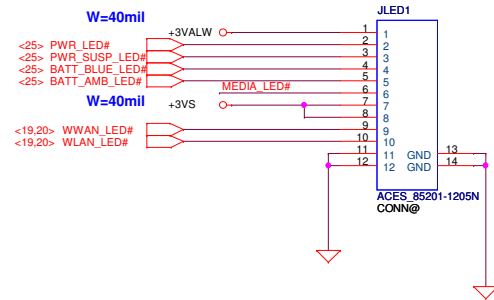
9/17 Remove R239,R240

(9~16mA)

5/12 Update WLAN connector(the same as KAV60)  
6/1 Revised 37、39、41、42、43 to NC  
6/12 Update connector to DC040006S00  
6/26 Update JMINI1 footprint  
7/01 update pin 23,25,31,33

Compal Electronics, Inc.			
Title		WLAN	
Size		Document Number	
Customer		LA-6222P	
Date		Wednesday, November 17, 2010	
Sheet		20 of 36	
Rev		1.0	

## LED PCB CONN

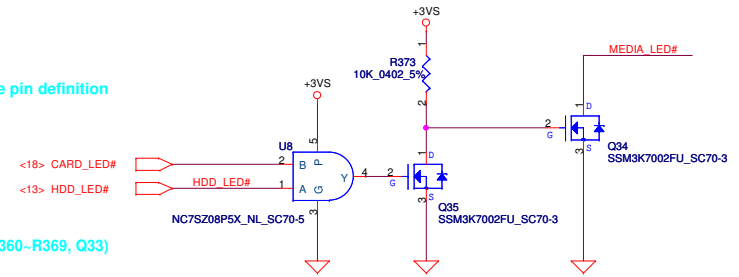


8/22 Update JP2 Symbol from database (ACES\_85201-1605N\_16P)

8/24 Update JLED1 Symbol from database (ACES\_85201-1205N\_12P) & Update pin definition

9/1 Add LED Circuit (LED2~4(SC597UDB000), LED5(SC5191NB000), R360~R369, Q33)

9/1 Change All LED power to 5V

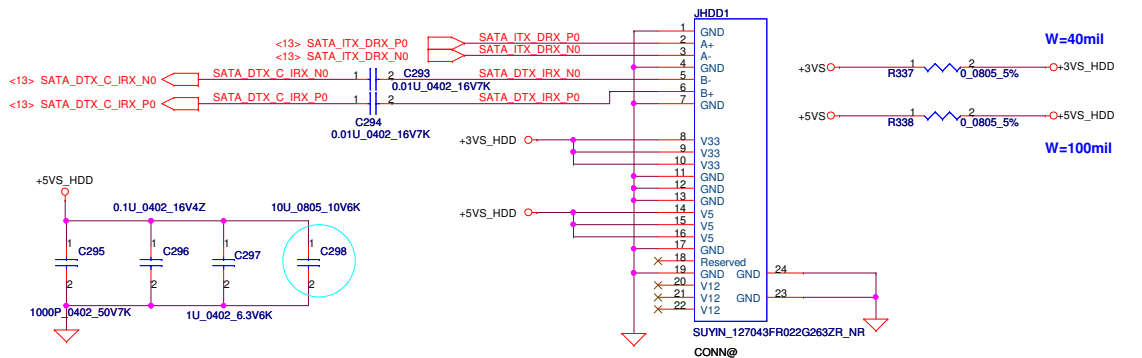


9/1 Add R373, Q34, Q35 for MEDIA\_LED#

9/9 Change LED2~4 footprint to LED\_HT-297DQ-GQ\_4P

9/11 Remove LED portion

## SATA HDD Conn.

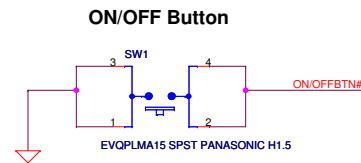


8/22 Reserve R337 R338 Add net +3VS\_HDD,+5VS\_HDD

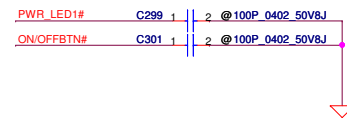
9/1 Change Q33 to SB000009610(S5M3K7002FU\_SC70-3)

8/22 Change C298 from 10U 6.3V to 10U 10V

Security Classification		Compal Secret Data		Compal Electronics, Inc.	
Issued Date	2010/08/12	Deciphered Date	2012/08/12	Title	SATA CONN./LED/B CONN./BATT CONN.
THIS SHEET OF ENGINEERING DRAWING IS THE PROPRIETARY PROPERTY OF COMPAL ELECTRONICS, INC. AND CONTAINS CONFIDENTIAL AND TRADE SECRET INFORMATION. THIS SHEET MAY NOT BE TRANSFERRED FROM THE CUSTODY OF THE COMPETENT DIVISION OF R&D DEPARTMENT EXCEPT AS AUTHORIZED BY COMPAL ELECTRONICS, INC. NEITHER THIS SHEET NOR THE INFORMATION IT CONTAINS MAY BE USED BY OR DISCLOSED TO ANY THIRD PARTY WITHOUT PRIOR WRITTEN CONSENT OF COMPAL ELECTRONICS, INC.				Size B	Rev 1.0
				Date:	Wednesday, November 17, 2010
				Sheet	21 of 36



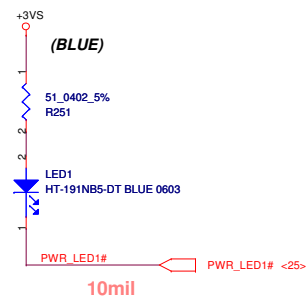
**FOR EMI**



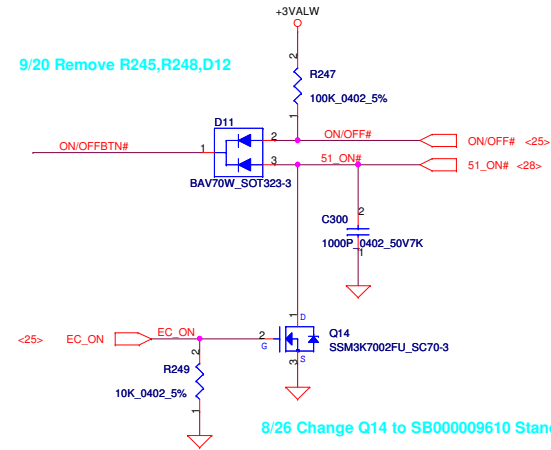
9/6 Change D13 from mount to @  
10/05 Remove D13

9/1 Remove LED2 LED3 circuit, Change 70@ to mount

9/20 Add LED2 LED3 Circuit  
9/21 Remove LED2 LED3 Circuit

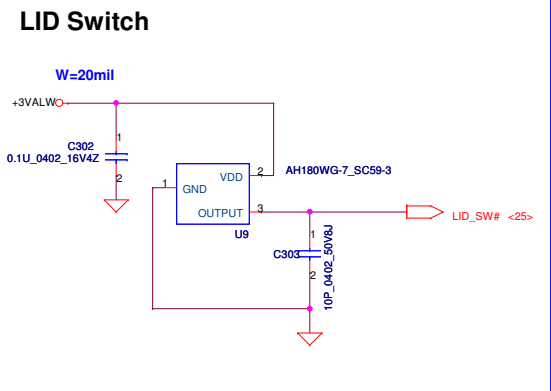


8/26 Change D11 to SC600000B00 Standard Part

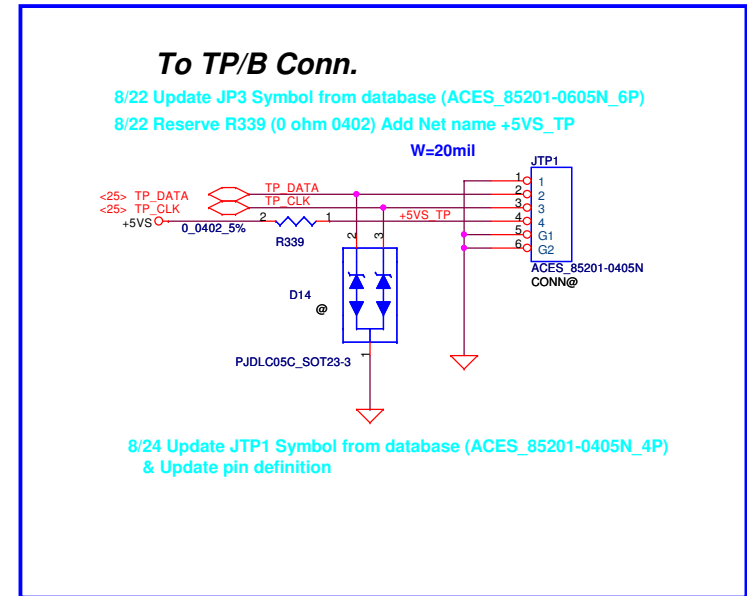
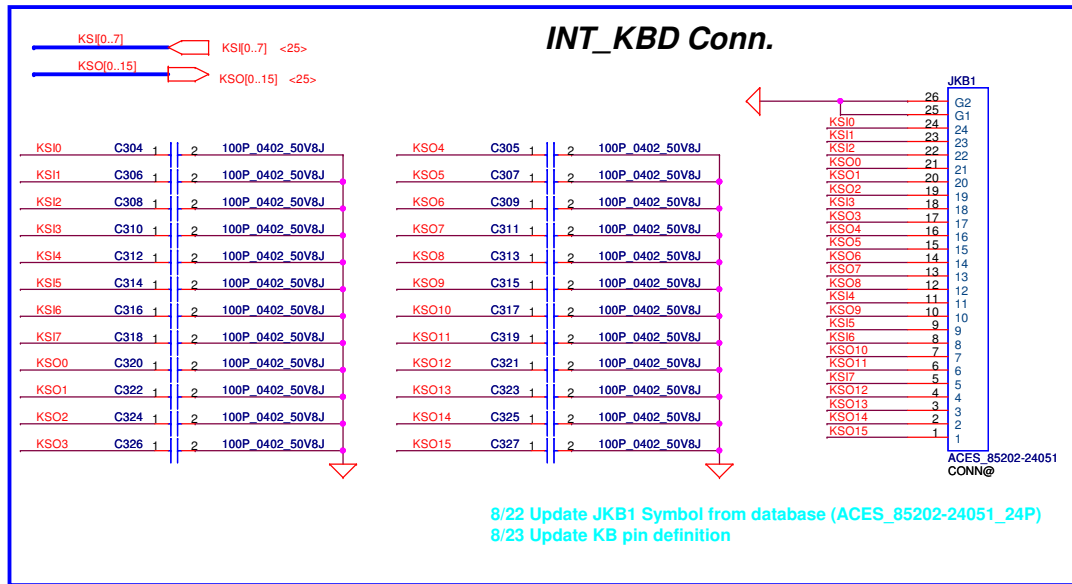


8/26 Change Q14 to SB000009610 Standard Part

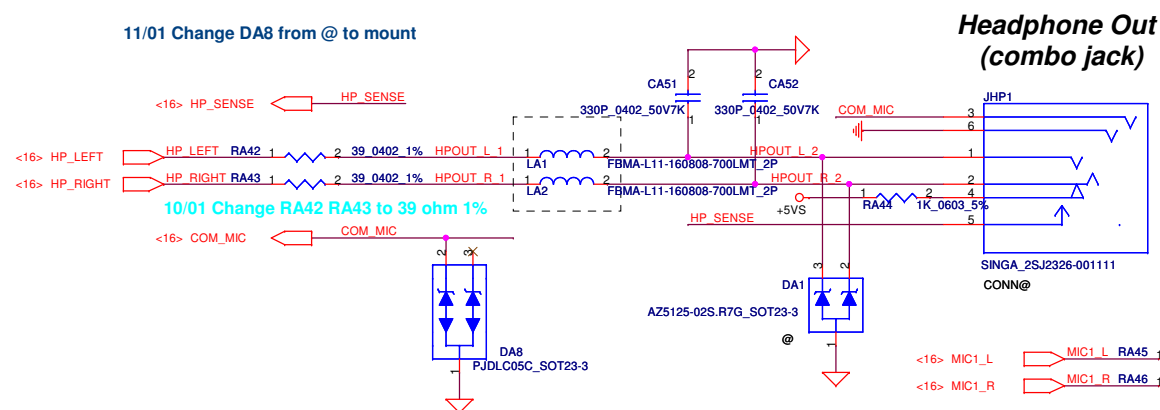
9/24 Change U9 to SA00001TC00



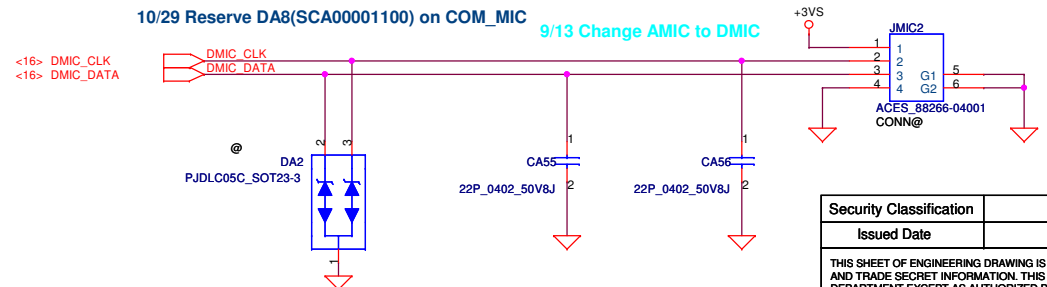
Security Classification	Compal Secret Data			Compal Electronics, Inc.		
Issued Date	2010/08/12	Deciphered Date	2012/08/12	Title	ON/OFF / PWR SW/ LID SW	
THIS SHEET OF ENGINEERING DRAWING IS THE PROPRIETARY PROPERTY OF COMPAL ELECTRONICS, INC. AND CONTAINS CONFIDENTIAL AND TRADE SECRET INFORMATION. THIS SHEET MAY NOT BE TRANSFERRED FROM THE CUSTODY OF THE COMPETENT DIVISION OF R&D DEPARTMENT EXCEPT AS AUTHORIZED BY COMPAL ELECTRONICS, INC. NEITHER THIS SHEET NOR THE INFORMATION IT CONTAINS MAY BE USED BY OR DISCLOSED TO ANY THIRD PARTY WITHOUT PRIOR WRITTEN CONSENT OF COMPAL ELECTRONICS, INC.				Size	Document Number	Rev
				B	P0VE6 Schematics	1.0
Date:	Wednesday, November 17, 2010	Sheet	22	of	36	



11/01 Change DA8 from @ to mount



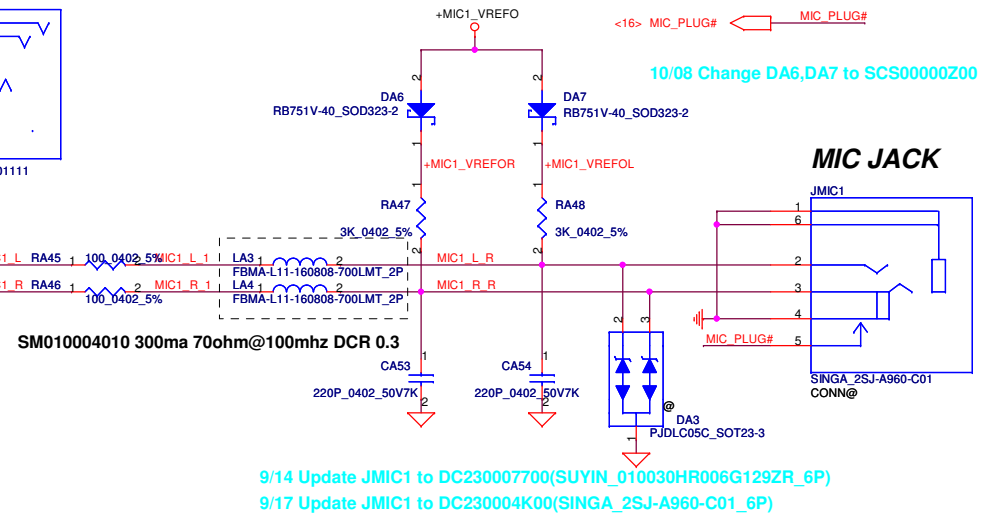
10/29 Reserve DA8(SCA00001100) on COM\_MIC



10/06 Change Jacks GND to GNDA

9/28 Change Jacks AGND to GND

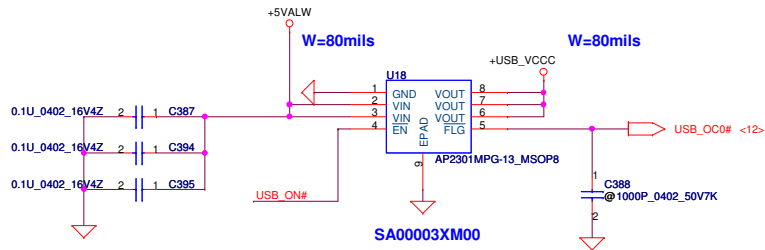
9/13 Combine LS-7071PR01\_USB\_0908.DSN Audio Jack Portion



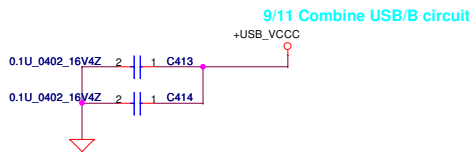
Security Classification		Compal Secret Data		Compal Electronics, Inc.	
Issued Date	2010/08/12	Deciphered Date	2012/08/12	Title	
THIS SHEET OF ENGINEERING DRAWING IS THE PROPRIETARY PROPERTY OF COMPAL ELECTRONICS, INC. AND CONTAINS CONFIDENTIAL AND TRADE SECRET INFORMATION. THIS SHEET MAY NOT BE TRANSFERRED FROM THE CUSTODY OF THE COMPETENT DIVISION OF R&D DEPARTMENT EXCEPT AS AUTHORIZED BY COMPAL ELECTRONICS, INC. NEITHER THIS SHEET NOR THE INFORMATION IT CONTAINS MAY BE USED BY OR DISCLOSED TO ANY THIRD PARTY WITHOUT PRIOR WRITTEN CONSENT OF COMPAL ELECTRONICS, INC.				KB Conn/TP/CR Conn	
Size	Document Number	P0VE6 Schematics		Rev	
Date	Wednesday, November 17, 2010	Sheet	23	of	36

9/1 Add R370 R371 for OC circuit

9/15 remove R370 R371 for OC circuit



9/29 Add C394,C395(0.1u) Close to U18

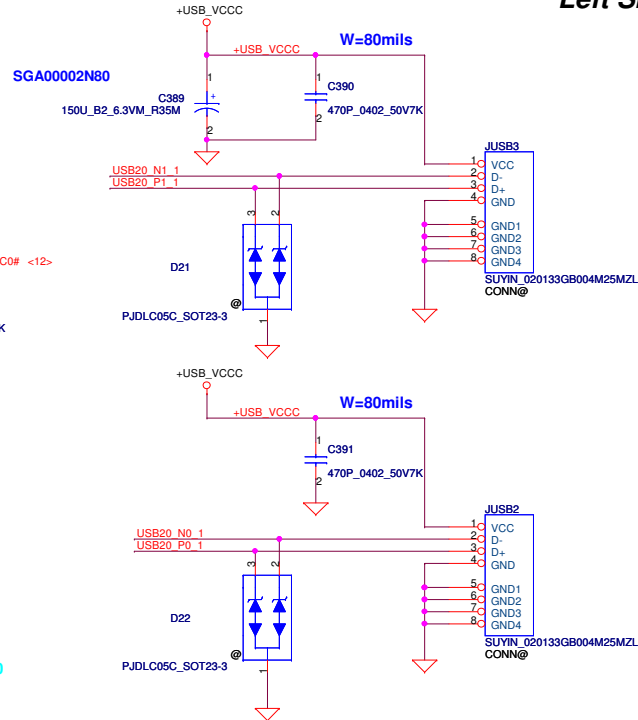


10/29 Add C413~C414(0.1u) on +USB\_VCC

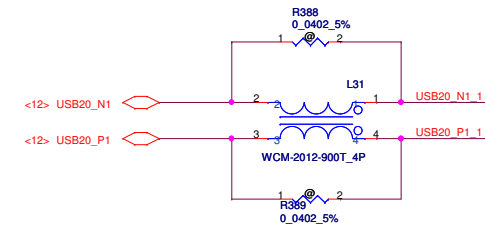
9/11 Change C340 C389 to SGA00002N80

9/24 Change U11,U18 to SA00003XM00

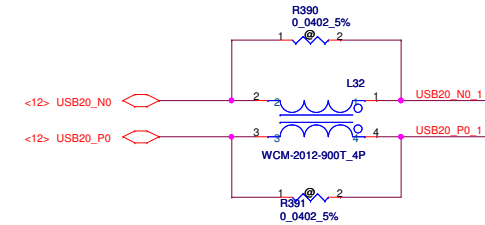
USB Charge Follow PAWGC  
8/25 Remove Charge USB Circuit



## Left Side USB CONN.



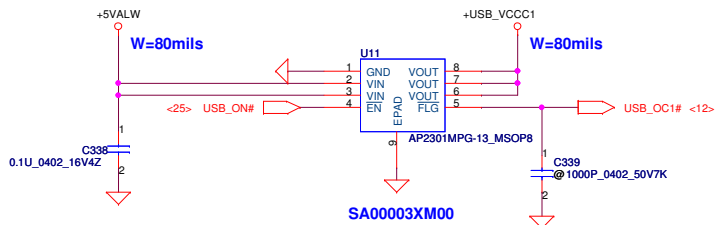
9/28 Swap L31 L32



10/28 Change R388,R389,R390,R391,R257,R258 from mount to un-mount

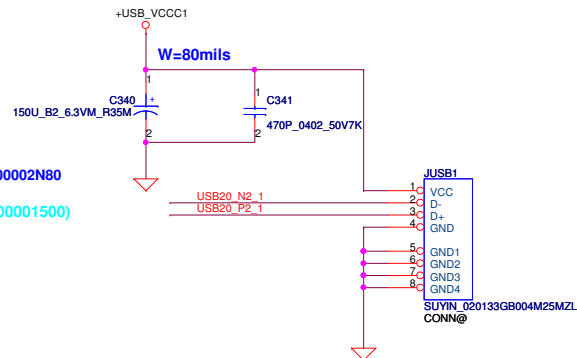
10/28 Change L28,L31,L32 (SM070000K00) from un-mount to mount

9/27 Change L28,L31,L32 to SM070000K00



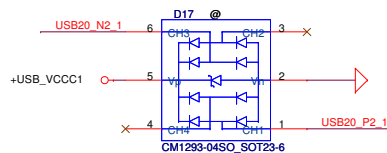
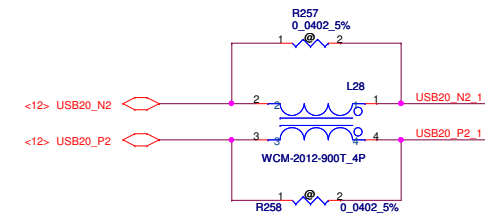
8/25 Change C340 from poly-cap to E-cap (SF000001500)

SGA00002N80



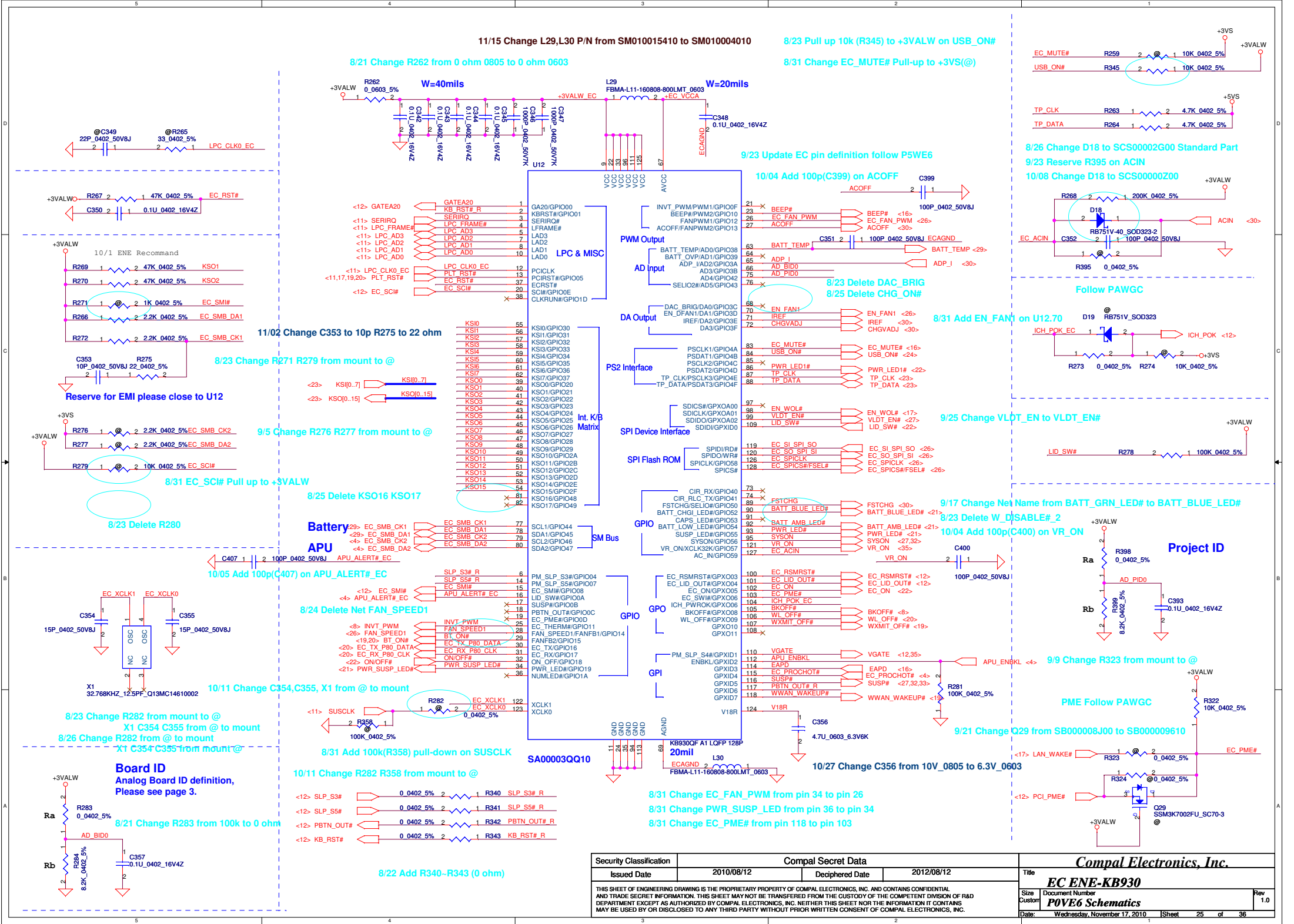
## Right Side USB CONN.

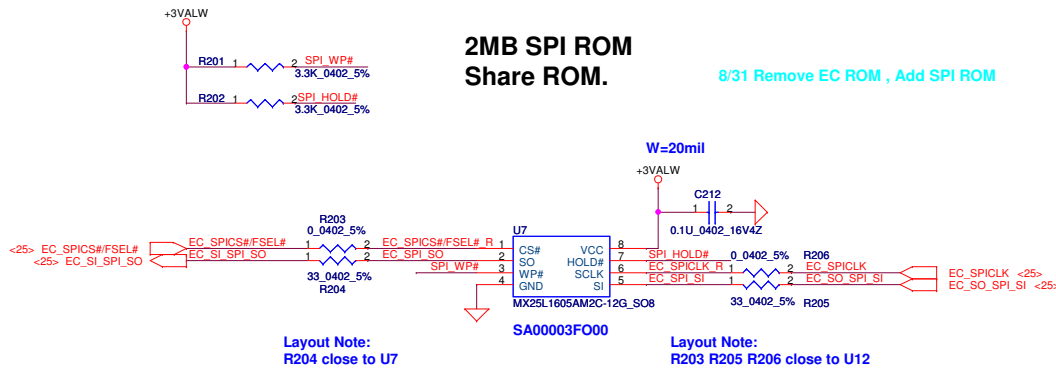
9/28 Swap L28



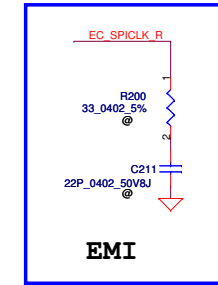
Security Classification		Compal Secret Data		Compal Electronics, Inc.	
Issued Date	2010/08/12	Deciphered Date	2012/08/12	USB PORTS	
THIS SHEET OF ENGINEERING DRAWING IS THE PROPRIETARY PROPERTY OF COMPAL ELECTRONICS, INC. AND CONTAINS CONFIDENTIAL AND TRADE SECRET INFORMATION. THIS SHEET MAY NOT BE TRANSFERRED FROM THE CUSTODY OF THE COMPETENT DIVISION OF R&D DEPARTMENT EXCEPT AS AUTHORIZED BY COMPAL ELECTRONICS, INC. NEITHER THIS SHEET NOR THE INFORMATION IT CONTAINS MAY BE USED BY OR DISCLOSED TO ANY THIRD PARTY WITHOUT PRIOR WRITTEN CONSENT OF COMPAL ELECTRONICS, INC.				Size B	Rev 1.0
Date: Wednesday, November 17, 2010				Sheet 24	of 36



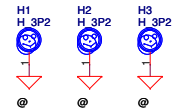




9/2 Change EC\_SPICLK to EC\_SPICLK\_R

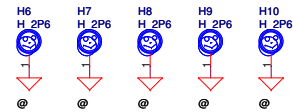


3P2 x 3 (APU)

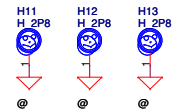


9/15 Update the Screw Hole  
9/20 Add H20 (H\_3P4X3P2N)

2P6 x 5



2P8 x 3



10/07 Change H13 from GND to LANGND  
10/07 Change H13 from LANGND to GND

3P2N x 1



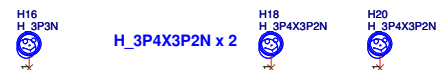
H\_3P2X3P5N x 1

H17 H\_3P2X3P5N

H\_3P2X3P7N x 1

H19 H\_3P2X3P7N

3P3N x 1

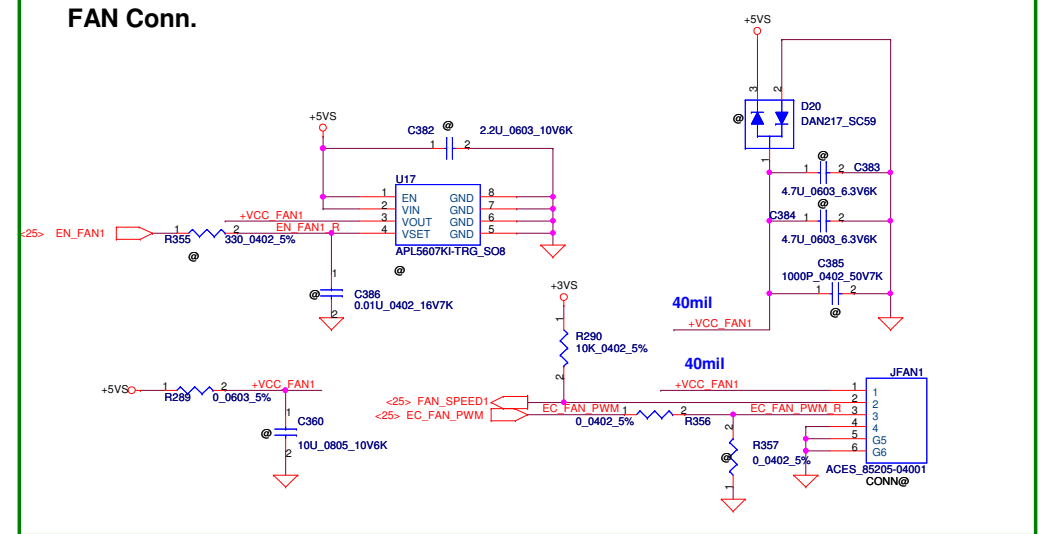


H\_3P4X3P2N x 2

H18 H\_3P4X3P2N

H20 H\_3P4X3P2N

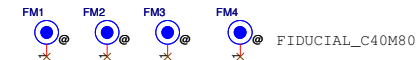
## FAN Conn.



8/24 Update JFAN1 Symbol from database (ACES\_85205-03001\_3P) & Update pin definition  
8/24 Delete R290

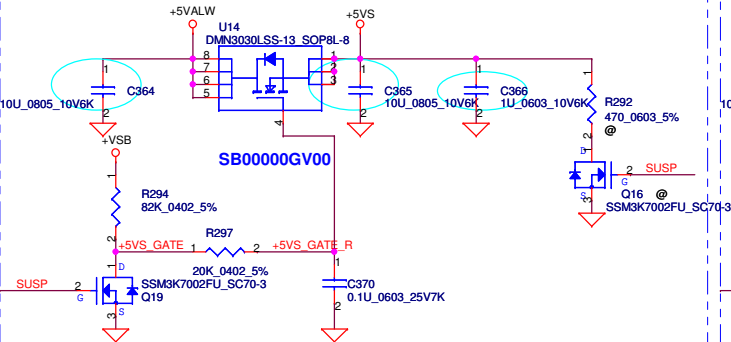
8/25 Update JFAN1 Symbol from database (ACES\_85205-04001\_4P) & Update pin definition  
8/25 Add R290 10k pull-up tp +3VS

8/31 Reserve U17, C382-C386, R355-R357, D20 (Fan Drive Circuit)

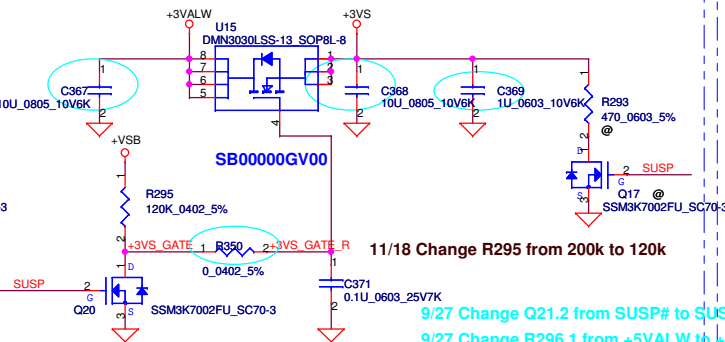


Security Classification		Compal Secret Data		Compal Electronics, Inc.	
Issued Date	2010/08/12	Deciphered Date	2012/08/12	Title	Screw / EC ROM / FAN
THIS SHEET OF ENGINEERING DRAWING IS THE PROPRIETARY PROPERTY OF COMPAL ELECTRONICS, INC. AND CONTAINS CONFIDENTIAL AND TRADE SECRET INFORMATION. THIS SHEET MAY NOT BE TRANSFERRED FROM THE CUSTODY OF THE COMPETENT DIVISION OF R&D DEPARTMENT EXCEPT AS AUTHORIZED BY COMPAL ELECTRONICS, INC. NEITHER THIS SHEET NOR THE INFORMATION IT CONTAINS MAY BE USED BY OR DISCLOSED TO ANY THIRD PARTY WITHOUT PRIOR WRITTEN CONSENT OF COMPAL ELECTRONICS, INC.				Size B	Document Number
				P0VE6 Schematics	
				Date:	Wednesday, November 17, 2010
				Sheet	26 of 36
				Rev	1.0

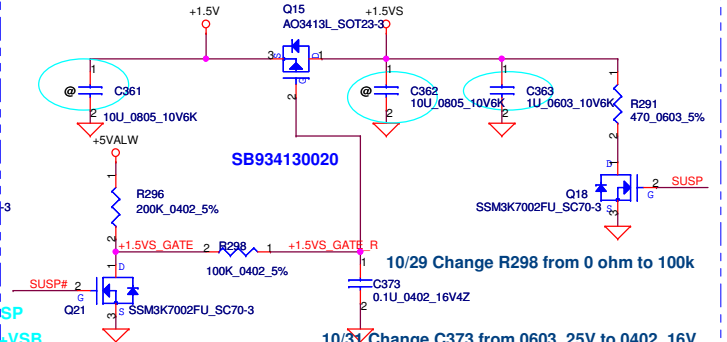
# +5VALW TO +5VS



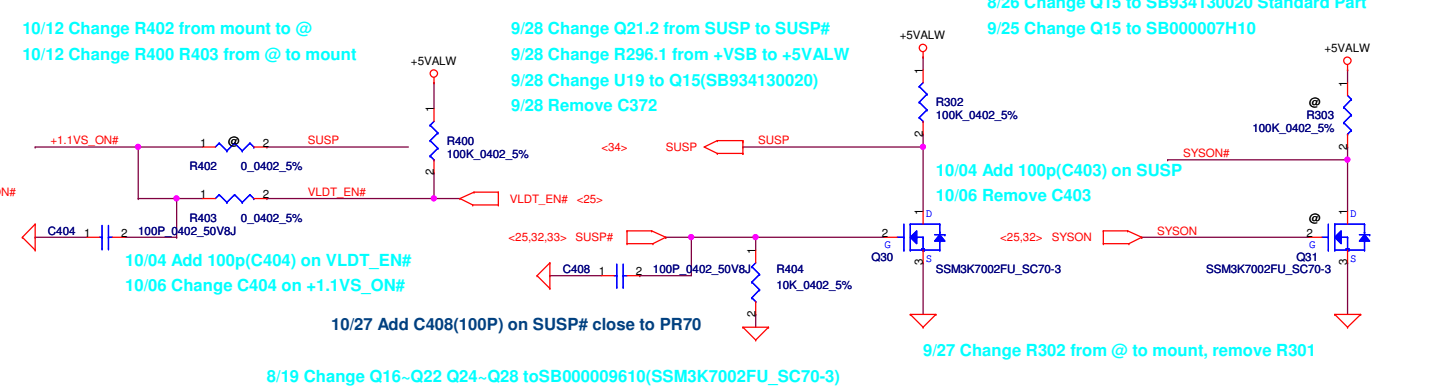
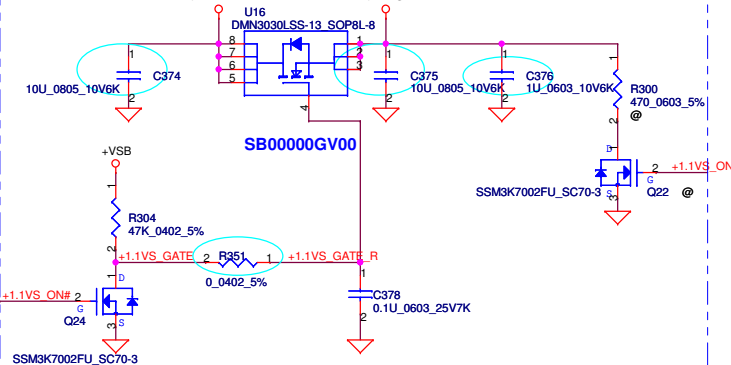
# +3VALW TO +3VS



# +1.5V to +1.5VS



# +1.1ALW to +1.1VS

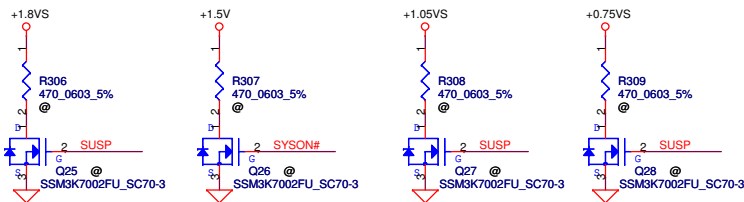


9/27 Change R304.1 from +5VALW to +VSB

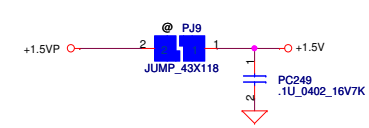
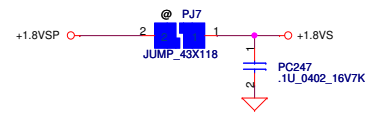
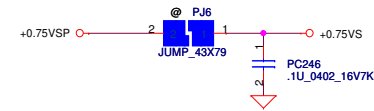
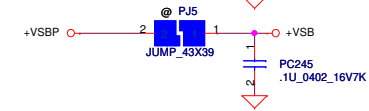
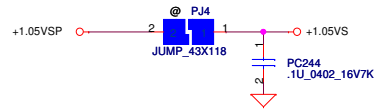
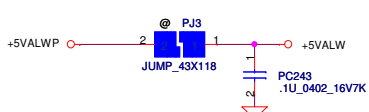
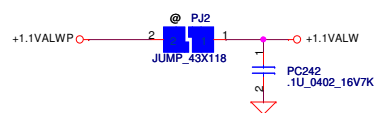
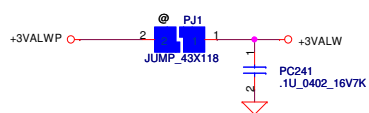
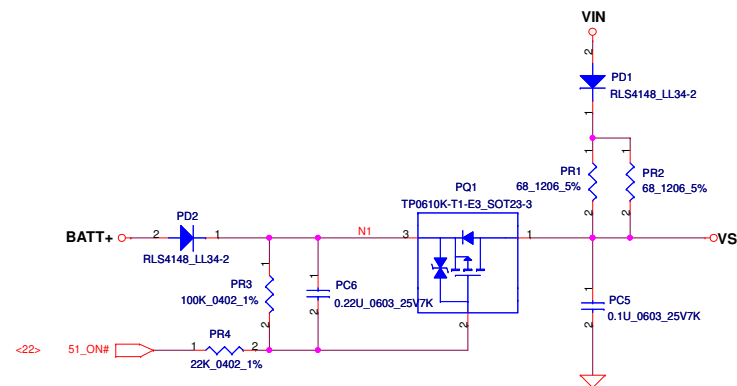
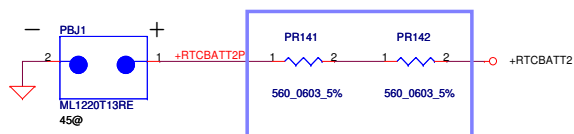
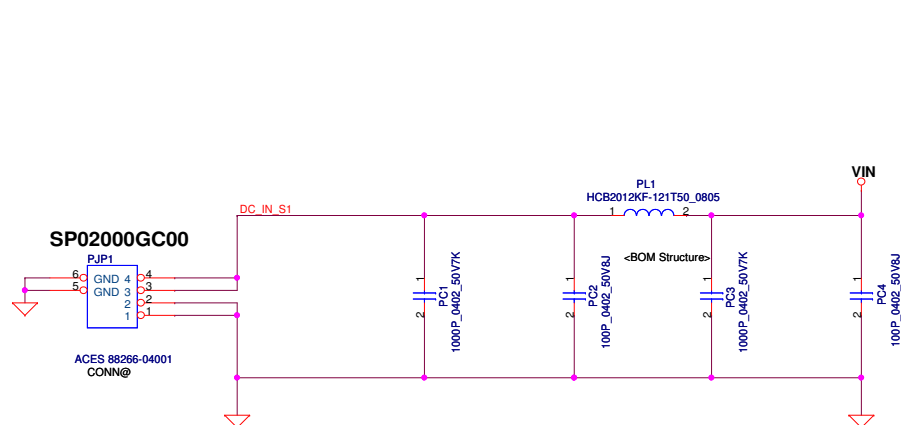
10/12 Change R294 to 100k  
10/12 Change R295, R296 to 200k  
10/12 Change R304 to 47k  
10/12 Change R294 to 82k  
10/12 Change R297 to 20k

8/19 Change Q16~Q22 Q24~Q28 to SB000009610 (SSM3K7002FU\_SC70-3)  
8/19 Change Q29 Q30 to Q23A Q23B (SB00000DH00 S TR DMN66D0LDW-7 2N SOT363-6)  
8/21 Change U14~U16 to SB548000310 (SI4800BDY-T1-E3\_SO8)  
8/23 Remove R305 R299 Add R350 R351 for Sequence  
8/24 Change Q23A Q23B to Q30 Q31(@) (SB000009610 SSM3K7002FU\_SC70-3)  
8/25 Change C363,C366,C369,C376 to SE080105K80 Standard Part  
8/25 Change C361,C362,C364,C365,C367,C368,C374,C375 to SE000004880 Standard Part  
8/26 Change U14, U15, U16 to SB00000GV00 Standard Part  
9/3 Delete C377(DIS@)  
9/23 Reserve R400~403, Q36 for VLDT\_EN  
9/25 Remove R401 Q36 on VLDT\_EN  
9/25 Add 10k(R404) PD on SUSP#

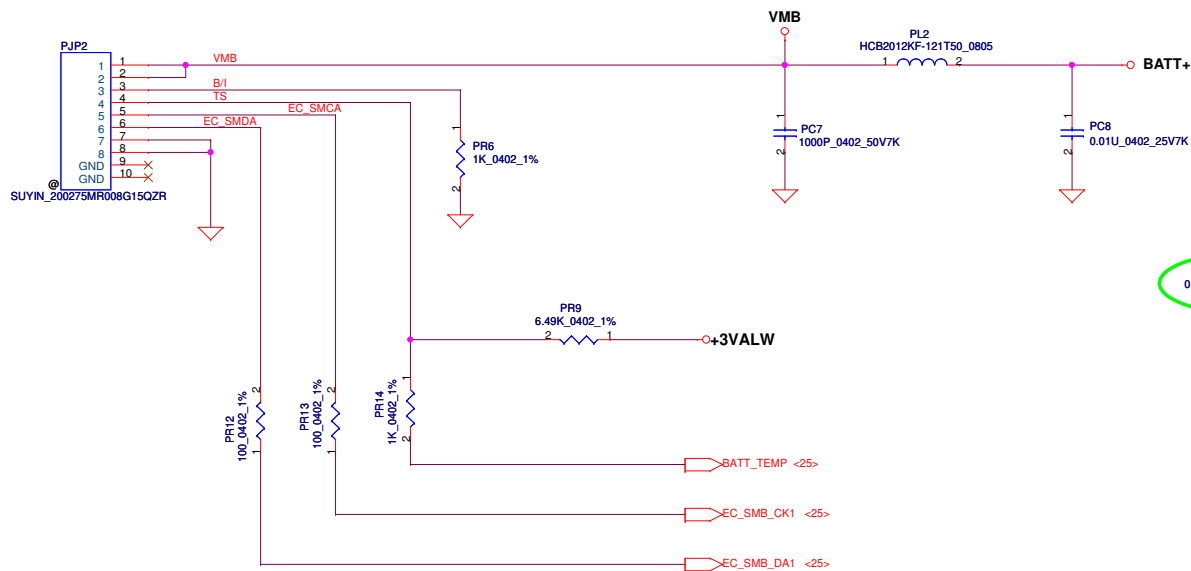
10/31 Change C361 C362 from mount to @



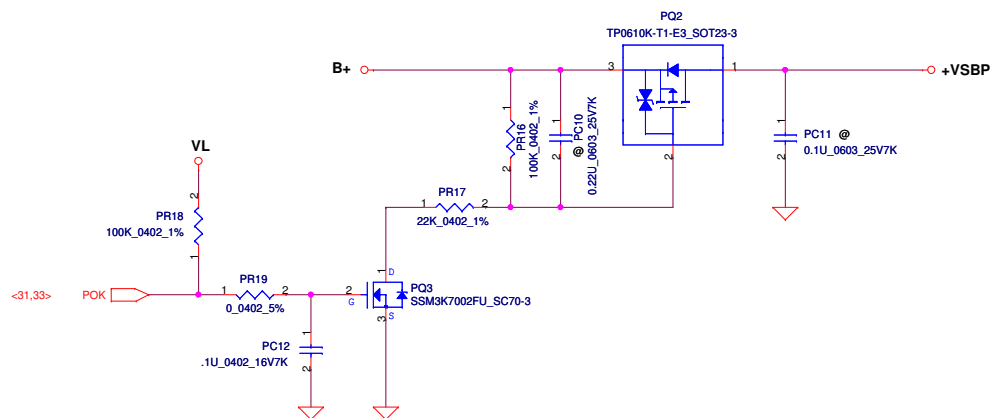
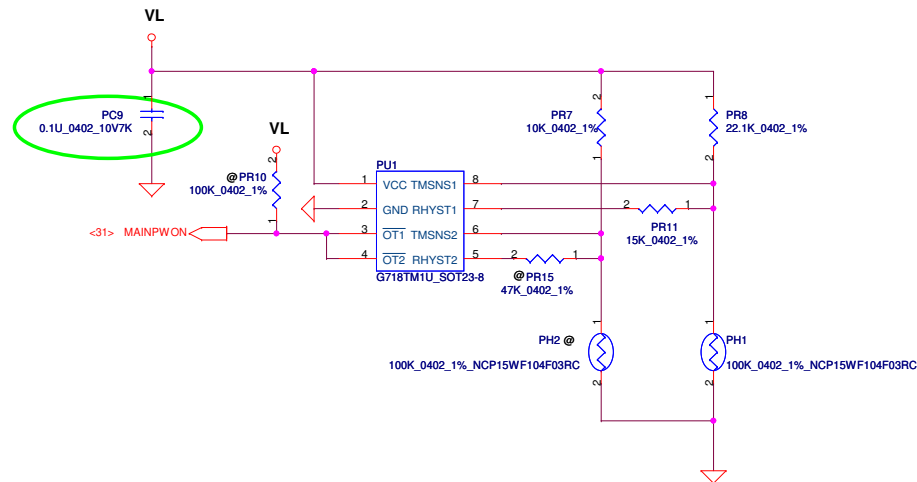
Security Classification	Compal Secret Data			Compal Electronics, Inc.		
Issued Date	2010/08/12	Deciphered Date	2012/08/12	Title		
THIS SHEET OF ENGINEERING DRAWING IS THE PROPRIETARY PROPERTY OF COMPAL ELECTRONICS, INC. AND CONTAINS CONFIDENTIAL AND TRADE SECRET INFORMATION. THIS SHEET MAY NOT BE TRANSFERRED FROM THE CUSTODY OF THE COMPETENT DIVISION OF R&D DEPARTMENT EXCEPT AS AUTHORIZED BY COMPAL ELECTRONICS, INC. NEITHER THIS SHEET NOR THE INFORMATION IT CONTAINS MAY BE USED BY OR DISCLOSED TO ANY THIRD PARTY WITHOUT PRIOR WRITTEN CONSENT OF COMPAL ELECTRONICS, INC.				DC Interface		
Size	Custom	Document Number	P0VE6 Schematics	Rev	1.0	
Date	Thursday, November 18, 2010	Sheet	27	of	36	



Security Classification		Compal Secret Data		Compal Electronics, Inc.		
Issued Date	2010/08/12	Deciphered Date	2012/08/12	Title		
THIS SHEET OF ENGINEERING DRAWING IS THE PROPRIETARY PROPERTY OF COMPAL ELECTRONICS, INC. AND CONTAINS CONFIDENTIAL AND TRADE SECRET INFORMATION. THIS SHEET MAY NOT BE TRANSFERRED FROM THE CUSTODY OF THE COMPETENT DIVISION OF R&D DEPARTMENT EXCEPT AS AUTHORIZED BY COMPAL ELECTRONICS, INC. NEITHER THIS SHEET NOR THE INFORMATION IT CONTAINS MAY BE USED BY OR DISCLOSED TO ANY THIRD PARTY WITHOUT PRIOR WRITTEN CONSENT OF COMPAL ELECTRONICS, INC.				Size	Document Number	Rev
				Date:	Wednesday, November 17, 2010	Sheet 28 of 36
				DCIN/VIN DETECTOR		
				1.0		



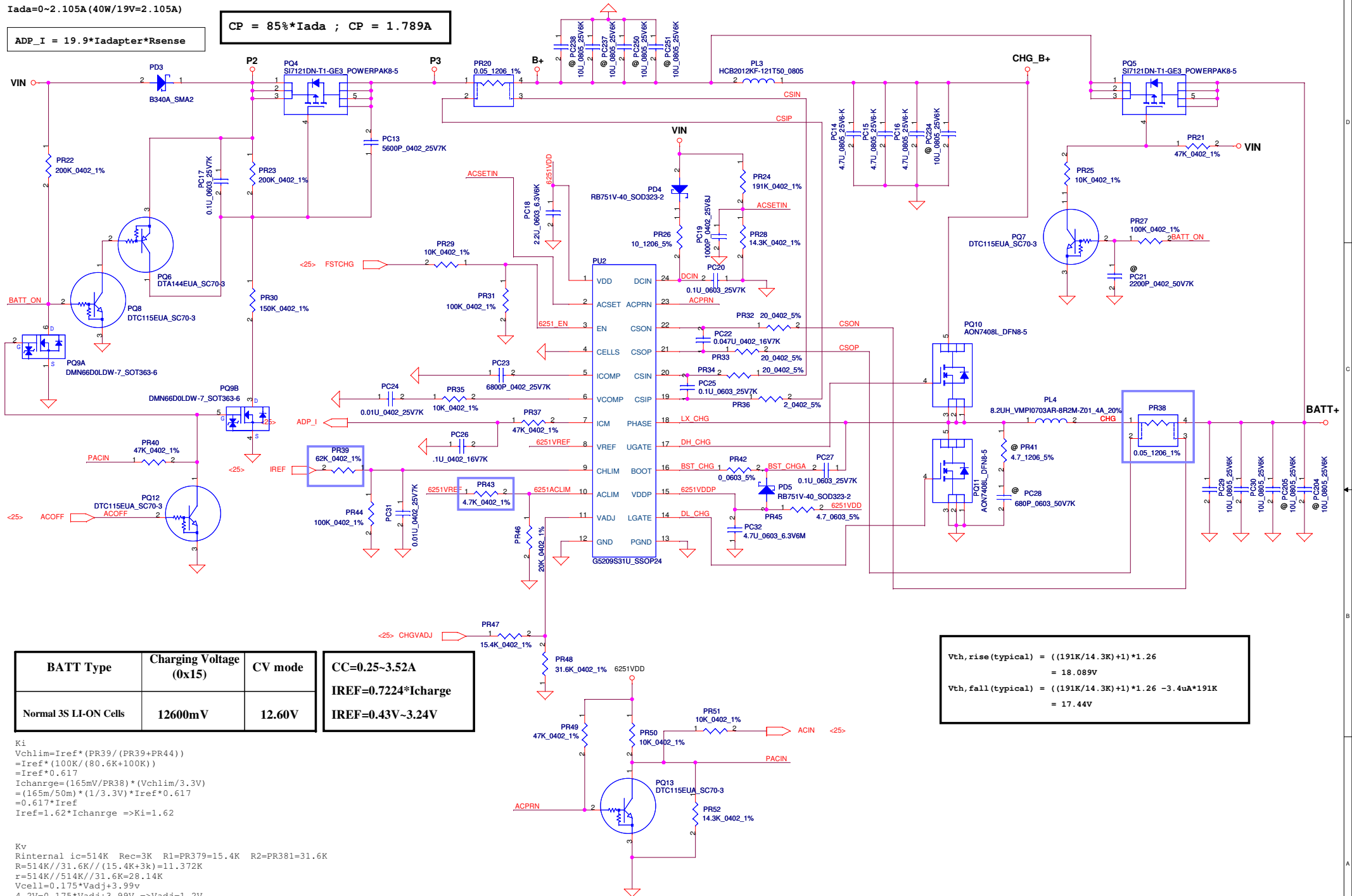
PH1 under CPU bottom side :  
CPU thermal protection at 92 degree C  
Recovery at 72 degree C



Iada=0~2.105A (40W/19V=2.105A)

ADP\_I = 19.9\*Iadapter\*Rsense

CP = 85%\*Iada ; CP = 1.789A



BATT Type	Charging Voltage (0x15)	CV mode
Normal 3S LI-ON Cells	12600mV	12.60V

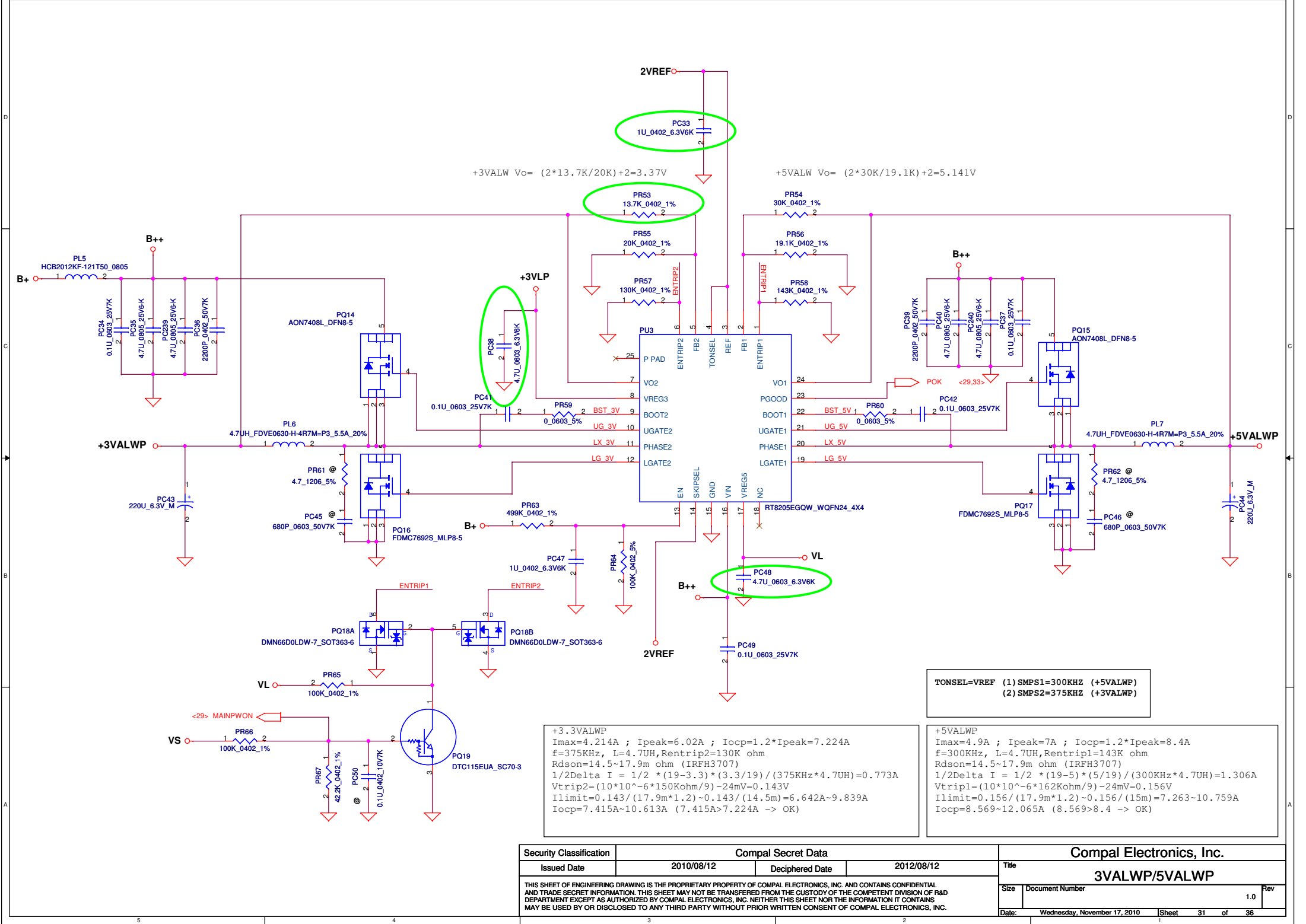
CC=0.25~3.52A  
IREF=0.7224\*Icharge  
IREF=0.43V~3.24V

Ki  
Vchlim=Iref\*(PR39/(PR39+PR44))  
=Iref\*(100K/(80.6K+100K))  
=Iref\*0.617  
Ichange=(165mV/PR38)\*(Vchlim/3.3V)  
=(165m/50m)\*(1/3.3V)\*Iref\*0.617  
=0.617\*Iref  
Iref=1.62\*Ichange =>Ki=1.62

Kv  
Rinternal ic=514K Rec=3K R1=PR379=15.4K R2=PR381=31.6K  
R=514K/(31.6K/(15.4K+3K))=11.372K  
r=514K/(514K/31.6K)=28.14K  
Vcell=0.175\*Vadj+3.99v  
4.2V=0.175\*Vadj+3.99v =>Vadj=1.2V  
Vadj=Vref\*(R/(R+514K))+CALIBRATE\*(r/(r+514K))  
1.1483=CALIBRATE\*0.6046 =>CALIBRATE=1.899  
1.899=(4.2-(Vcell+A\*0.175))\*Kv=(4.2-(4.2+A\*0.175))\*Kv  
A=Vref\*(R/(R+514K))=0.052  
Kv=9.451

Vth, rise (typical) = ((191K/14.3K)+1)\*1.26  
= 18.089V  
Vth, fall (typical) = ((191K/14.3K)+1)\*1.26 - 3.4uA\*191K  
= 17.44V

Security Classification		Compal Secret Data				Compal Electronics, Inc.											
Issued Date		2010/08/12		Deciphered Date		2012/08/12		Title		CHARGER							
THIS SHEET OF ENGINEERING DRAWING IS THE PROPRIETARY PROPERTY OF COMPAL ELECTRONICS, INC. AND CONTAINS CONFIDENTIAL AND TRADE SECRET INFORMATION. THIS SHEET MAY NOT BE TRANSFERRED FROM THE CUSTODY OF THE COMPETENT DIVISION OF R&D DEPARTMENT EXCEPT AS AUTHORIZED BY COMPAL ELECTRONICS, INC. NEITHER THIS SHEET NOR THE INFORMATION IT CONTAINS MAY BE USED BY OR DISCLOSED TO ANY THIRD PARTY WITHOUT PRIOR WRITTEN CONSENT OF COMPAL ELECTRONICS, INC.										Size	Document Number		Rev				
																1.0	
										Date:		Wednesday, November 17, 2010		Sheet		30 of 36	



+3.3VALWP  
Imax=4.214A ; Ipeak=6.02A ; Iocp=1.2\*Ipeak=7.224A  
f=375KHz, L=4.7UH, Rentrtp2=130K ohm  
Rdson=14.5~17.9m ohm (IRFH3707)  
1/2Delta I = 1/2 \* (19-3.3) \* (3.3/19) / (375KHz\*4.7UH) = 0.773A  
Vtrip2=(10\*10^-6\*150Kohm/9)-24mV=0.143V  
Ilimit=0.143/(17.9m\*1.2)-0.143/(14.5m)=6.642A~9.839A  
Iocp=7.415A~10.613A (7.415A>7.224A -> OK)

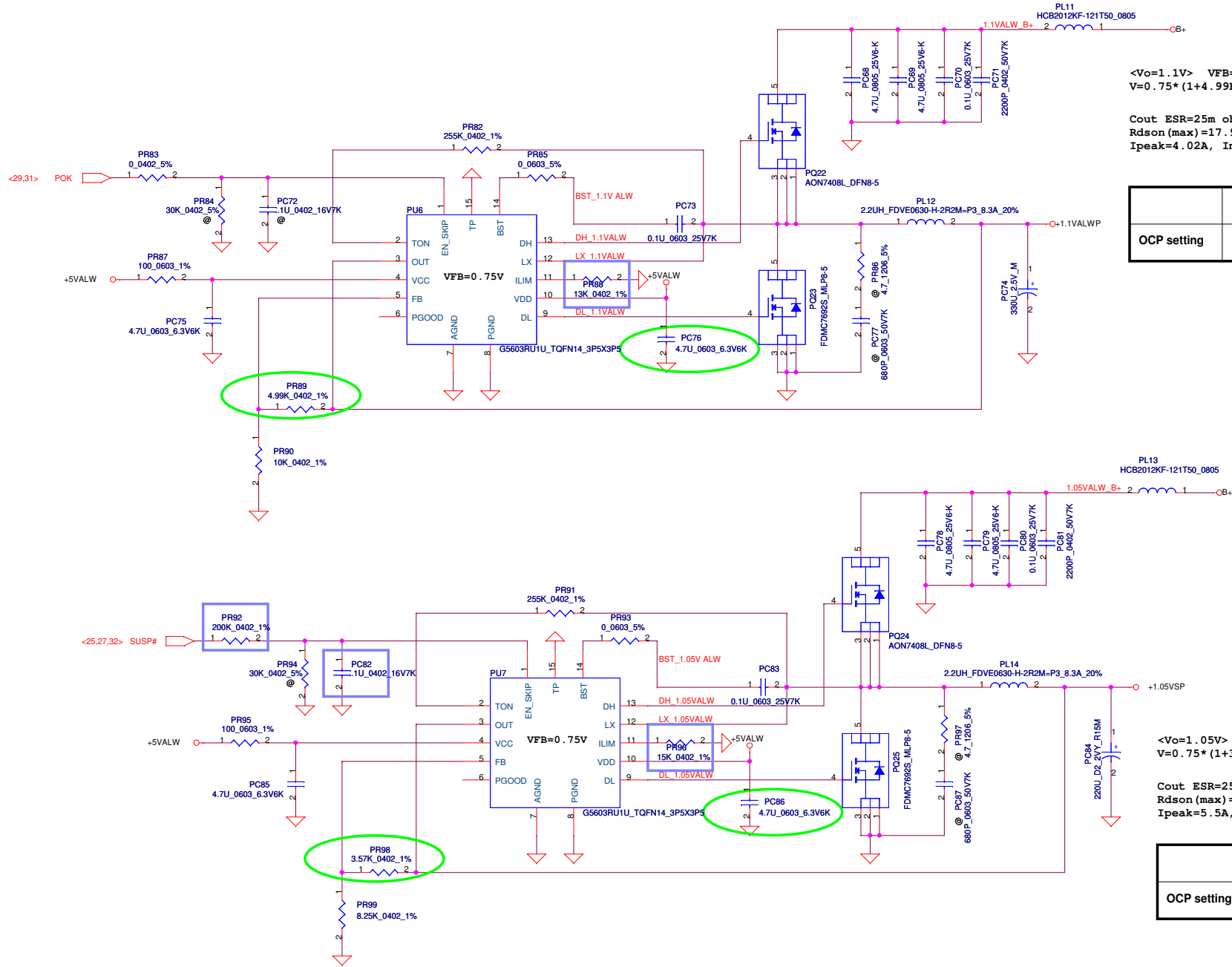
TONSEL=VREF (1) SMPS1=300KHZ (+5VALWP)  
(2) SMPS2=375KHZ (+3VALWP)

+5VALWP  
Imax=4.9A ; Ipeak=7A ; Iocp=1.2\*Ipeak=8.4A  
f=300KHz, L=4.7UH, Rentrtp1=143K ohm  
Rdson=14.5~17.9m ohm (IRFH3707)  
1/2Delta I = 1/2 \* (19-5) \* (5/19) / (300KHz\*4.7UH) = 1.306A  
Vtrip1=(10\*10^-6\*162Kohm/9)-24mV=0.156V  
Ilimit=0.156/(17.9m\*1.2)-0.156/(15m)=7.263~10.759A  
Iocp=8.569~12.065A (8.569>8.4 -> OK)

Security Classification		Compal Secret Data		Compal Electronics, Inc.		
Issued Date	2010/08/12	Deciphered Date	2012/08/12	Title		
THIS SHEET OF ENGINEERING DRAWING IS THE PROPRIETARY PROPERTY OF COMPAL ELECTRONICS, INC. AND CONTAINS CONFIDENTIAL AND TRADE SECRET INFORMATION. THIS SHEET MAY NOT BE TRANSFERRED FROM THE CUSTODY OF THE COMPETENT DIVISION OF R&D DEPARTMENT EXCEPT AS AUTHORIZED BY COMPAL ELECTRONICS, INC. NEITHER THIS SHEET NOR THE INFORMATION IT CONTAINS MAY BE USED BY OR DISCLOSED TO ANY THIRD PARTY WITHOUT PRIOR WRITTEN CONSENT OF COMPAL ELECTRONICS, INC.				3VALWP/5VALWP		
Size	Document Number	Rev		1.0		
Date	Wednesday, November 17, 2010	Sheet	31	of 36		







$$V_o = 1.1V \quad V_{FB} = 0.75V$$

$$V = 0.75 * (1 + 4.99K/10K) = 1.124V$$

Cout ESR=25m ohm  
 Rdson(max)=17.9 mohm Rdson(typ)=14.5 mohm. (IRFH3707)  
 Ipeak=4.02A, Imax=2.814A, Iocp > 4.824A

	G5603	RT8209B	TPS51117	RT8209M
OCP setting	5.799A	6.183A	6.845A	6.976A

$$V_o = 1.05V \quad V_{FB} = 0.75V$$

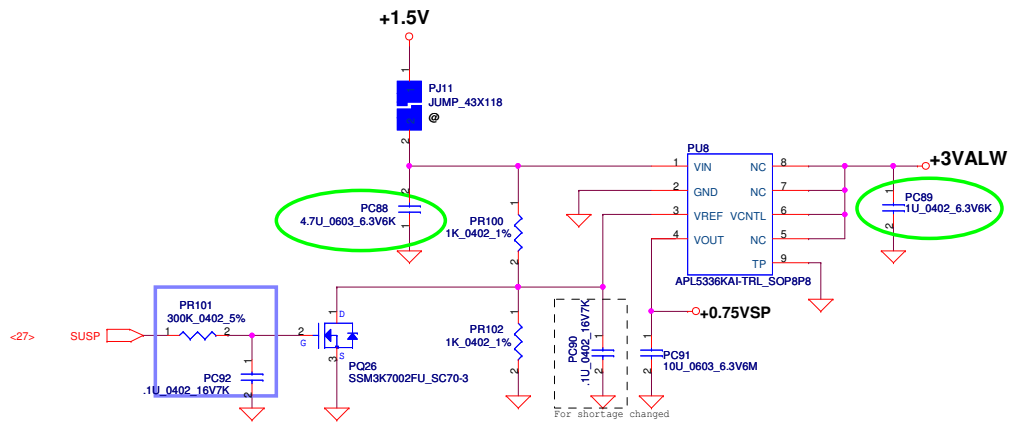
$$V = 0.75 * (1 + 3.57K/8.25K) = 1.074V$$

Cout ESR=25m ohm  
 Rdson(max)=17.9m ohm Rdson(typ)=14.5 mohm. (IRFH3707)  
 Ipeak=5.5A, Imax=3.85A, Iocp > 6.6A

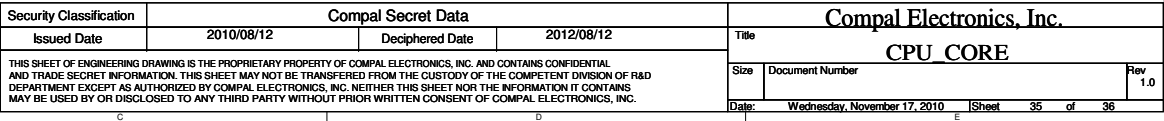
	G5603	RT8209B	TPS51117	RT8209M
OCP setting	6.524A	7.003A	7.768A	7.881A

	G5603	RT8209B	TPS51117	RT8209M
Temperature Compensated	-1180ppm/°C	1600ppm/°C	4500ppm/°C	4800ppm/°C
Vtrip_min (SPEC)	30mV	50mV	30mV	50mV
Vtrip_max (SPEC)	200mV	200mV	200mV	200mV

Security Classification	Compal Secret Data			Compal Electronics, Inc.		
Issued Date	2010/08/12	Deciphered Date	2012/08/12	Title		
THIS SHEET OF ENGINEERING DRAWING IS THE PROPRIETARY PROPERTY OF COMPAL ELECTRONICS, INC. AND CONTAINS CONFIDENTIAL AND TRADE SECRET INFORMATION. THIS SHEET MAY NOT BE TRANSFERRED FROM THE CUSTODY OF THE COMPETENT DIVISION OF R&D DEPARTMENT EXCEPT AS AUTHORIZED BY COMPAL ELECTRONICS, INC. NEITHER THIS SHEET NOR THE INFORMATION IT CONTAINS MAY BE USED BY OR DISCLOSED TO ANY THIRD PARTY WITHOUT PRIOR WRITTEN CONSENT OF COMPAL ELECTRONICS, INC.				1.1VALWP/1.0VSP		
Size Custom		Document Number		Rev 1.0		
Date: Wednesday, November 17, 2010		Sheet 33		of 36		



Security Classification	Compal Secret Data			Compal Electronics, Inc.	
Issued Date	2010/08/12	Deciphered Date	2012/08/12	Title	
THIS SHEET OF ENGINEERING DRAWING IS THE PROPRIETARY PROPERTY OF COMPAL ELECTRONICS, INC. AND CONTAINS CONFIDENTIAL AND TRADE SECRET INFORMATION. THIS SHEET MAY NOT BE TRANSFERRED FROM THE CUSTODY OF THE COMPETENT DIVISION OF R&D DEPARTMENT EXCEPT AS AUTHORIZED BY COMPAL ELECTRONICS, INC. NEITHER THIS SHEET NOR THE INFORMATION IT CONTAINS MAY BE USED BY OR DISCLOSED TO ANY THIRD PARTY WITHOUT PRIOR WRITTEN CONSENT OF COMPAL ELECTRONICS, INC.				0.75VSP	
				Size	Rev
				Document Number	1.0
				Date:	Wednesday, November 17, 2010
				Sheet	34 of 36



## Version change list (P.I.R. List)

Page 1 of 1 for PWR

Item	Fixed Issue	Reason for change	Rev.	PG#	Modify List	Date	Phase
1		Modify CP point for 40W adapter (40W*0.85=34W)	1	30	Change PR43 from SD034249280 (S RES 1/16W 24.9K +-1% 0402) to SD034470180 (S RES 1/16W 4.7K +-1% 0402)	20101011	EVT
2		Modify Outpot current sensor follow PAV70 design	1	30	Change PR38 from SD012200D80 (S RES 1/2W 0.02 +-1% 1206) to SD00000CI10 (S RES 1/2W 0.05 +-1% 1206 )	20101011	EVT
3		Modify KI =1.62 follow PAV70 design	1	30	Change PR39 from SD034309380 (S RES 1/16W 309K +-1% 0402) to SD034620280 (S RES 1/16W 62K +-1% 0402)	20101011	EVT
4		Modify 1.5V OCP (there is only one dimm for 10.1")	1	32	Change PR73 from SD034787180 (S RES 1/16W 7.87K +-1% 0402) to SD034150280 (S RES 1/16W 15K +-1% 0402)	20101011	EVT
5		Modify 1.1V OCP for G5603	1	33	Change PR88 from SD034100280 (S RES 1/16W 10K +-1% 0402) to SD034130280 (S RES 1/16W 13K +-1% 0402)	20101011	EVT
6		Modify 1.05V OCP for G5603	1	33	Change PR96 from SD034140280 (S RES 1/16W 14K +-1% 0402) to SD034150280 (S RES 1/16W 15K +-1% 0402)	20101011	EVT
7		Modify +APU CORE OCP setting	1	35	Change PR123 to 6.98K ohm , PR127 to 1.87K ohm, PR125 to 90.9K ohm, PR126 to 26.1K ohm	20101011	EVT
8		+APU CORE power sequence concern	1	35	change PR116 to non-pop	20101011	EVT
9		Modify RTC schematic	1	28	add PR141 & PR142 =560 ohm	20101011	EVT
10		Modify SY8033B Enable pin pull down resistor	1	32	Change PR72 to non-pop	20101011	EVT
11		Modify 1.8VS power sequence	1	32	Change PR70 to 200K ohm , add PC56 =0.22uF	20101012	EVT
12		Modify 1.05VSP power sequence	1	33	Change PR92 to 200K ohm , add PC82 =0.1uF	20101012	EVT
13		Modify 0.75VSP power sequence	1	34	Change PR101 to 300K ohm , add PC92 =0.1uF	20101012	EVT
14							
15							
16							
17							
18							
19							
20							
21							
22							
23							

Security Classification		Compal Secret Data		Compal Electronics, Inc.	
Issued Date	2010/08/12	Deciphered Date	2012/08/12	Title	
THIS SHEET OF ENGINEERING DRAWING IS THE PROPRIETARY PROPERTY OF COMPAL ELECTRONICS, INC. AND CONTAINS CONFIDENTIAL AND TRADE SECRET INFORMATION. THIS SHEET MAY NOT BE TRANSFERRED FROM THE CUSTODY OF THE COMPETENT DIVISION OF R&D DEPARTMENT EXCEPT AS AUTHORIZED BY COMPAL ELECTRONICS, INC. NEITHER THIS SHEET NOR THE INFORMATION IT CONTAINS MAY BE USED BY OR DISCLOSED TO ANY THIRD PARTY WITHOUT PRIOR WRITTEN CONSENT OF COMPAL ELECTRONICS, INC.				PIR (PWR)	
				Size Custom	Document Number
Date:		Monday, November 15, 2010		Sheet	36 of 36