

5V / 3.3V

5VPCU  
3V\_ALWAYS  
15V  
+5V  
+3V\_S5  
+3V  
+3VSUS  
+5VSUS

Page 26

1.8V / 0.9V

+1.8VSUS  
+2.5V  
+1.8V  
MVREF\_DM  
+0.9V  
+1.5V\_S5

Page 27

1.5V/CPUIO

+1.5V  
VCCP

Page 28

CPU CORE

VCC\_CORE

Page 25

BATTERY CHARGER

REF3V

Page 29

CLOCK GEN

ICS

ICS954206

Page 2

Centrino

PENTIUM-P/CELEROM-M

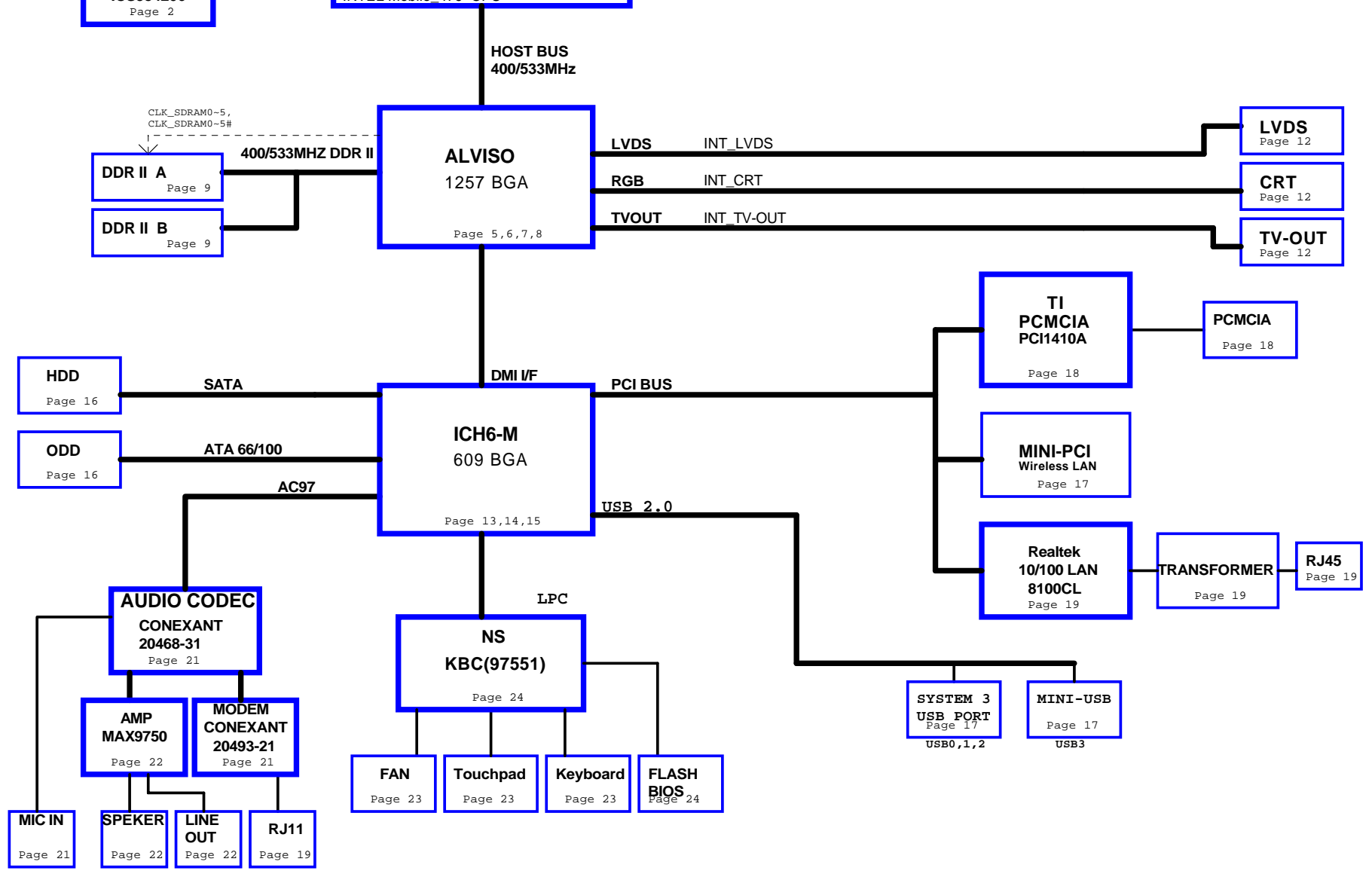
DORTHAN

INTEL Mobile 479 CPU

Page 3,4

# Kyoto II (EW5)

BOM MARK

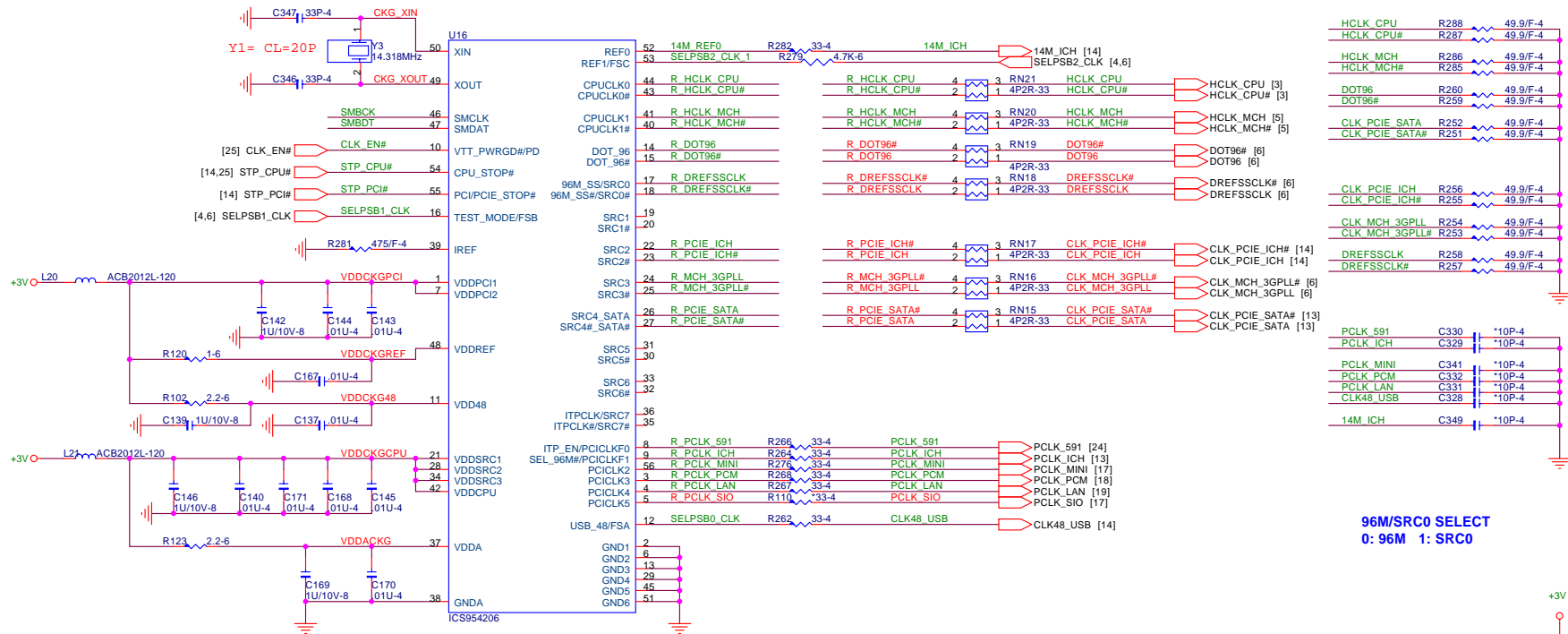


PCI ROUTING TABLE	IDSEL	INTERUPT	DEVICE
REQ0# / GNT0#	AD18	INTD#	REALTEK LAN
REQ1# / GNT1#	AD20	INTB#,INTC#	MINI-PCI
REQ2# / GNT2#	AD17	INTE#	TI 1410A

**QUANTA COMPUTER**  
HW Engineer :

**BLOCK DIAGRAM**  
Date : Saturday, July 09, 2005 Sheet 1 of 30 Rev : 1A

# Add for DEBUG BOARD



96M/SRC0 SELECT  
0: 96M 1: SRC0

ITP/SRC7 SELECT  
0: SRC7 1: ITP

## FSB SETTING

FSC	FSB	FSA	CPU	SRC	PCI
1	0	1	100	100	33
0	0	1	133	100	33
0	1	1	166	100	33
0	1	0	200	100	33
0	0	0	266	100	33
1	0	0	333	100	33
1	1	0	400	100	33
1	1	1	RSVD	100	33



QUANTA COMPUTER

HW Engineer :

Title

CLOCK GENERATOR

Size : X

Document Number :

Date :

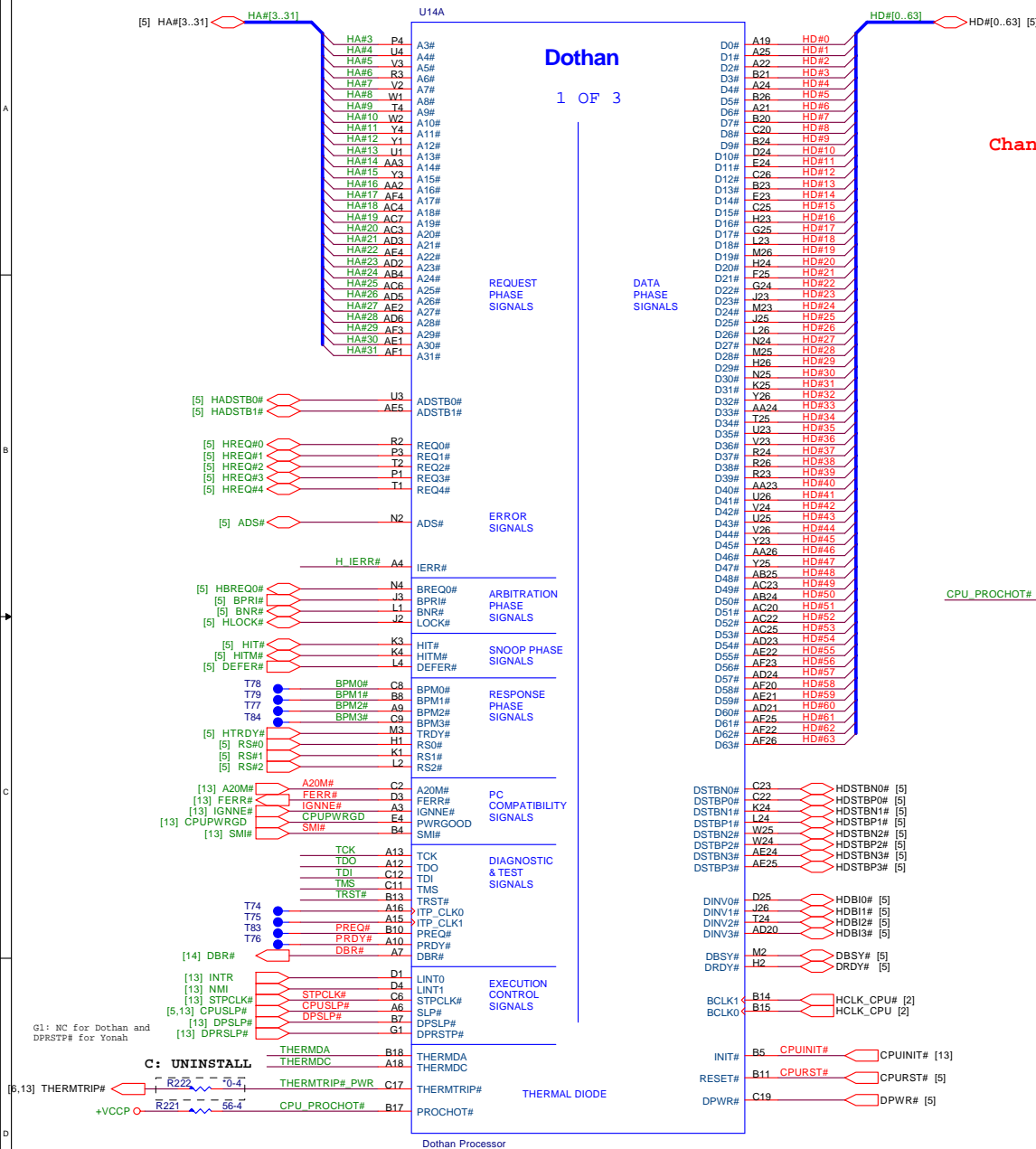
Saturday, July 09, 2005

Sheet 2 of 30

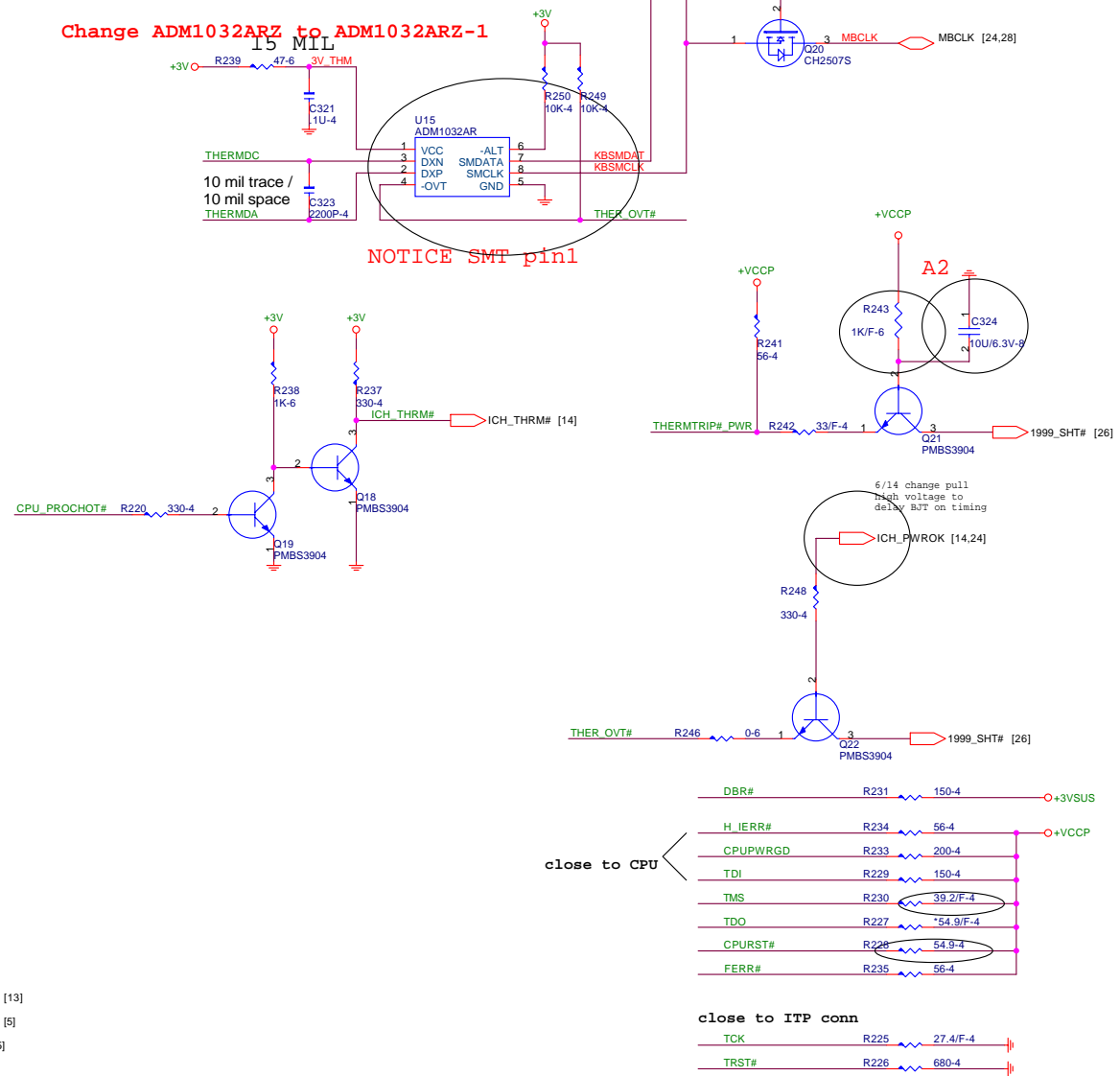
Rev :

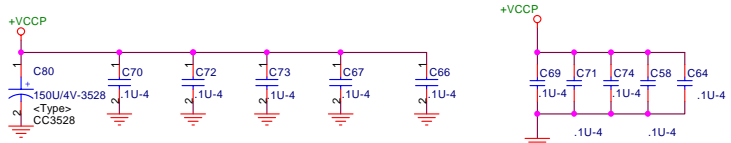
1A

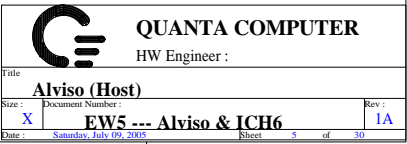
# H/W MONITOR



Change ADM1032ARZ to ADM1032ARZ-1

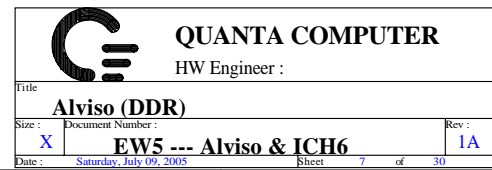


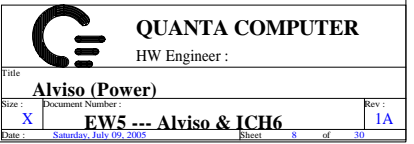




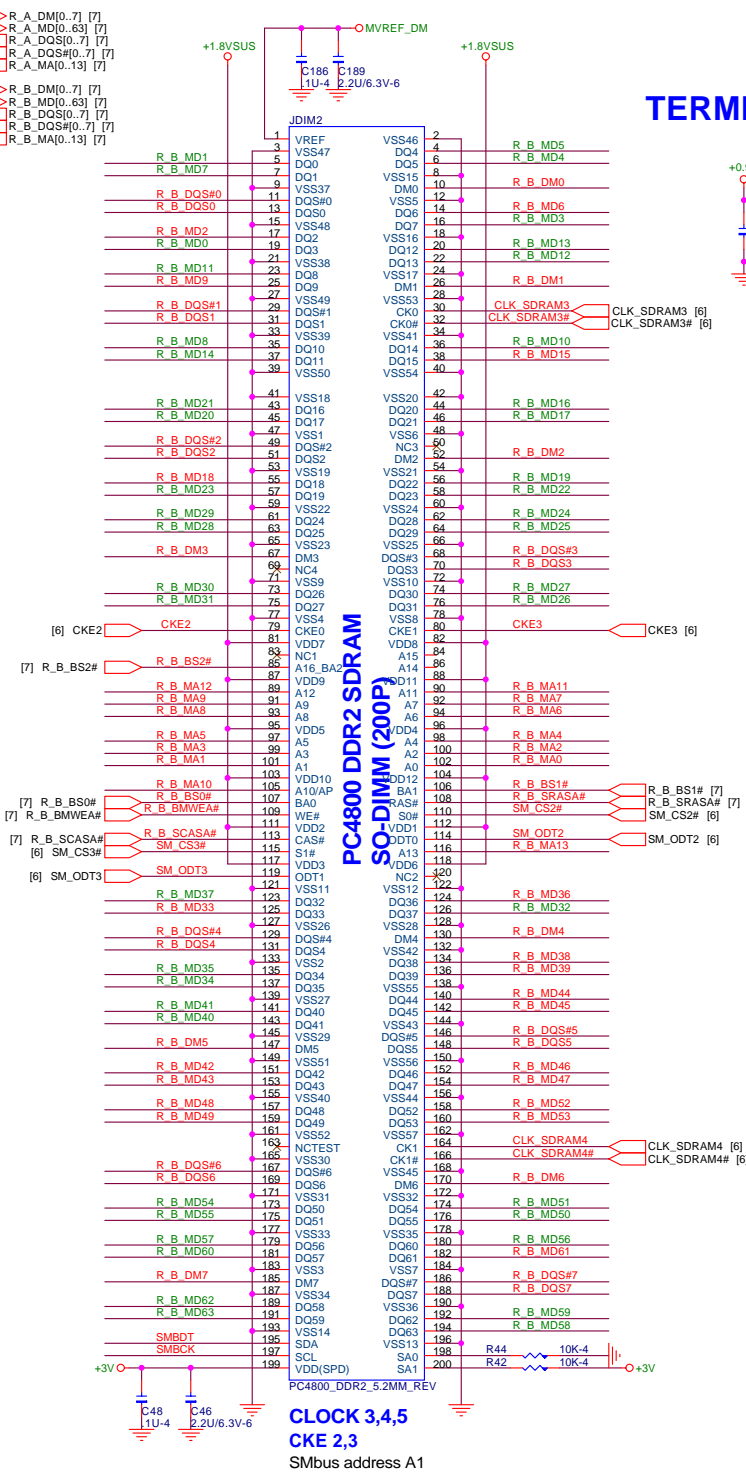




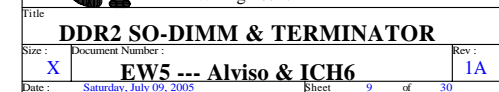










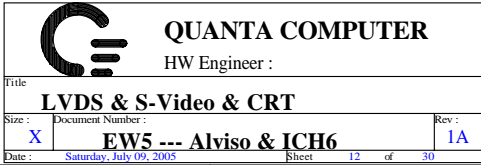
Pin	Signal	Pin	Signal	Pin	Signal	Pin	Signal
R A MA2	RN12	2	4P2R-56	R B MA10	RN2	1	2 4P2R-56
R A MA0	3	4		R B BS0#	3	4	
R A MA1	RN4	1	2 4P2R-56	R B MA0	RN3	1	2 4P2R-56
R A MA3	3	4		R B MA2	3	4	
R A MA13	R64	56-4		R B MA3	RN5	1	2 4P2R-56
R A BS1#	R75	56-4		R B MA1	3	4	
R A MA11	RN14	1	2 4P2R-56	R B MA6	RN8	1	2 4P2R-56
R A MA7	3	4		R B MA4	3	4	
R A MA8	RN6	1	2 4P2R-56	R B MA5	RN7	1	2 4P2R-56
R A MA5	3	4		R B MA7	RN11	1	2 4P2R-56
R A MA10	RN1	1	2 4P2R-56	R B MA11	3	4	
R A BS0#	3	4		R B BS1#	RN10	1	2 4P2R-56
R A MA12	RN9	1	2 4P2R-56	R B MA9	3	4	
R A MA9	3	4		R B BS2#	R79	56-4	
R A MA6	RN13	1	2 4P2R-56	R B MA13	R61	56-4	
R A MA4	3	4		R B BS2#	R87	56-4	
R A BS2#	R86	56-4		R B SRA5A#	R76	56-4	
R A SRA5A#	R72	56-4		R B SCASA#	R73	56-4	
R A SCASA#	R69	56-4		R B BMVEA#	R75	56-4	
R A BMVEA#	R65	56-4					

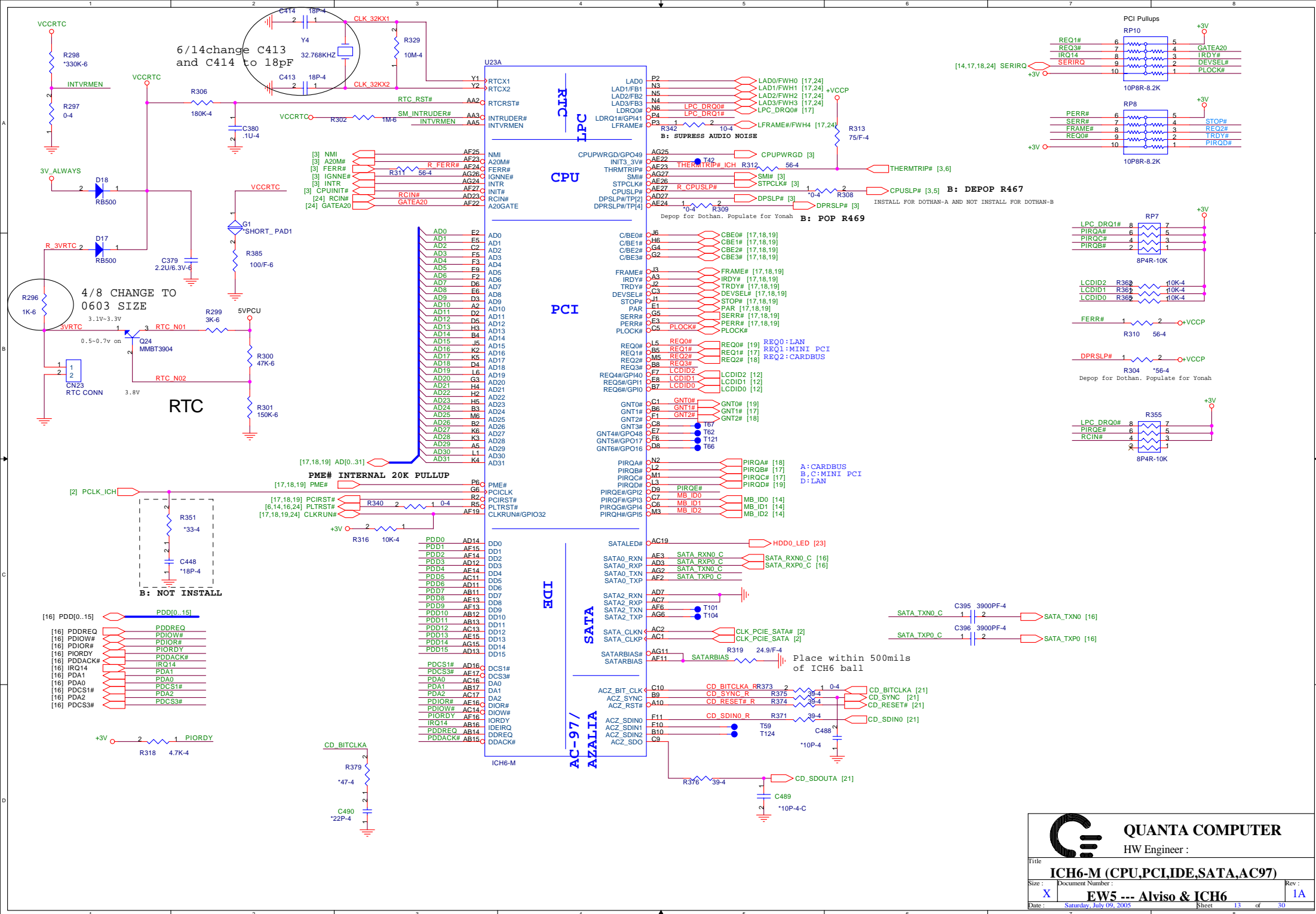


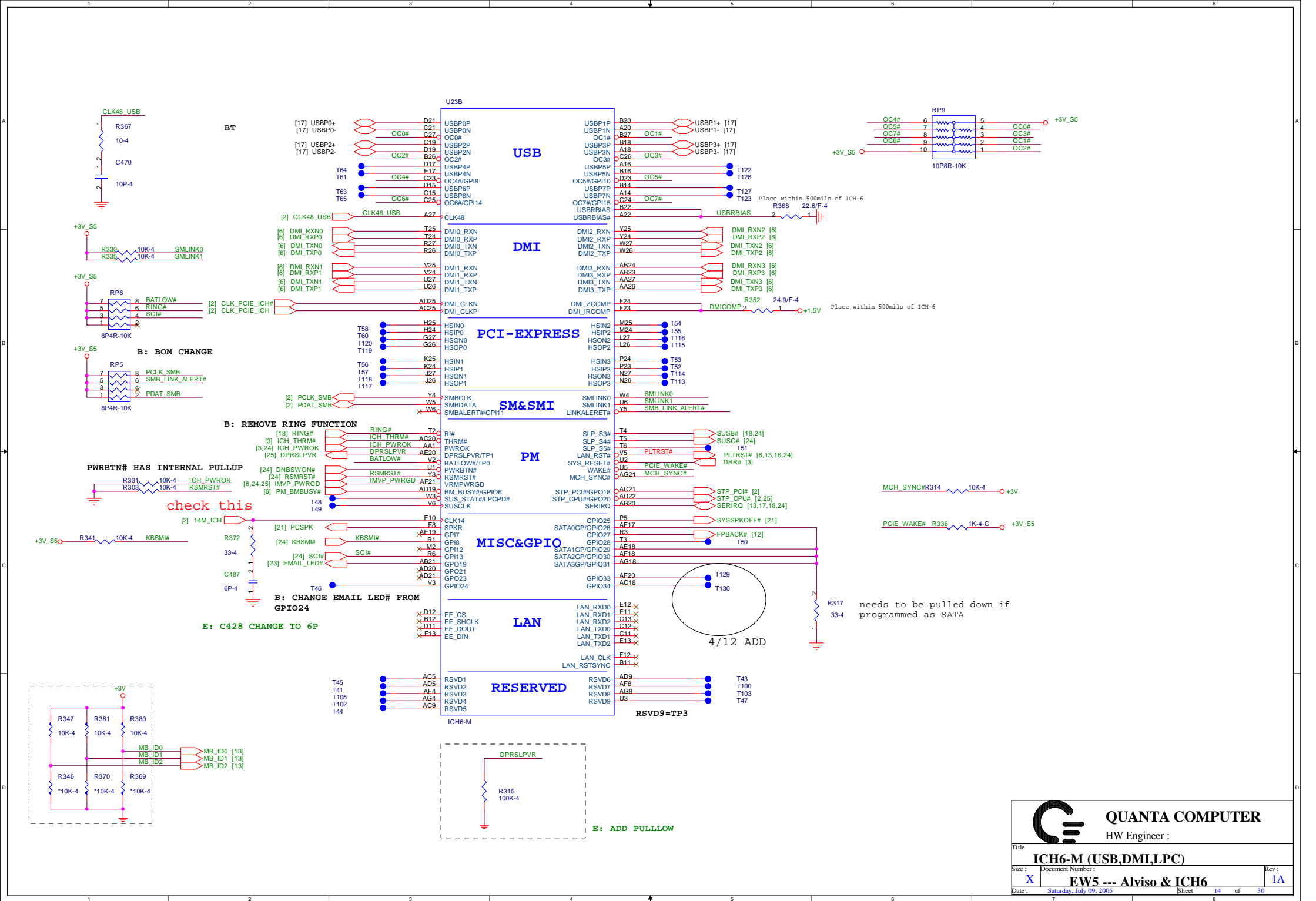
		<b>QUANTA COMPUTER</b>	
		HW Engineer :	
Title			
<b>AGP Bus Conn</b>			
Size :	Document Number :		Rev :
X	EW5 --- Alviso & ICH6		1A
Date :	Saturday, July 09, 2005		Sheet 10 of 30



			<b>QUANTA COMPUTER</b>		
			HW Engineer :		
Title <b>NC</b>					
Size : <b>X</b>	Document Number :				Rev : <b>1A</b>
Date : Saturday, July 09, 2005	Sheet <b>11</b> of <b>30</b>				



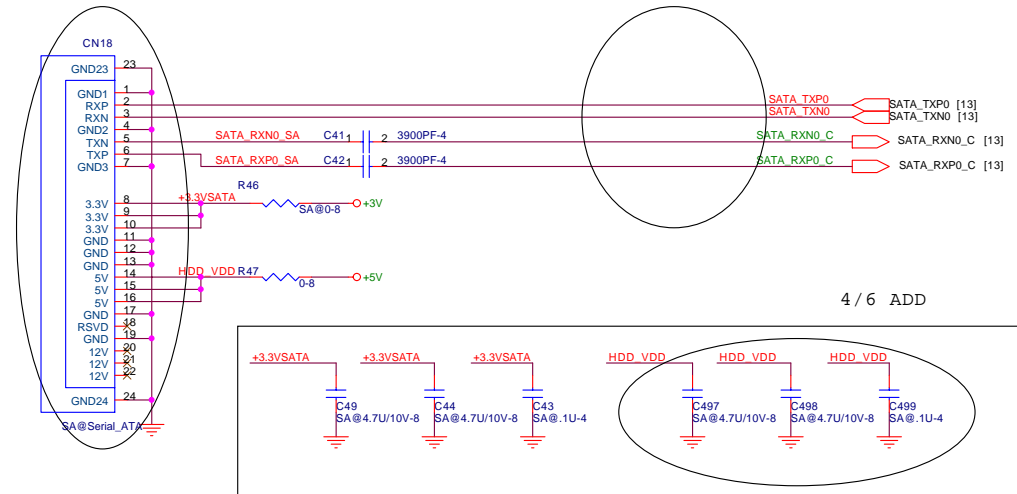




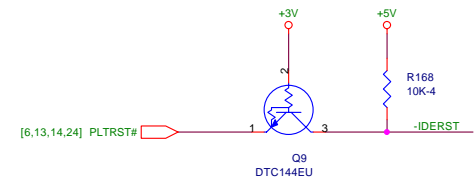
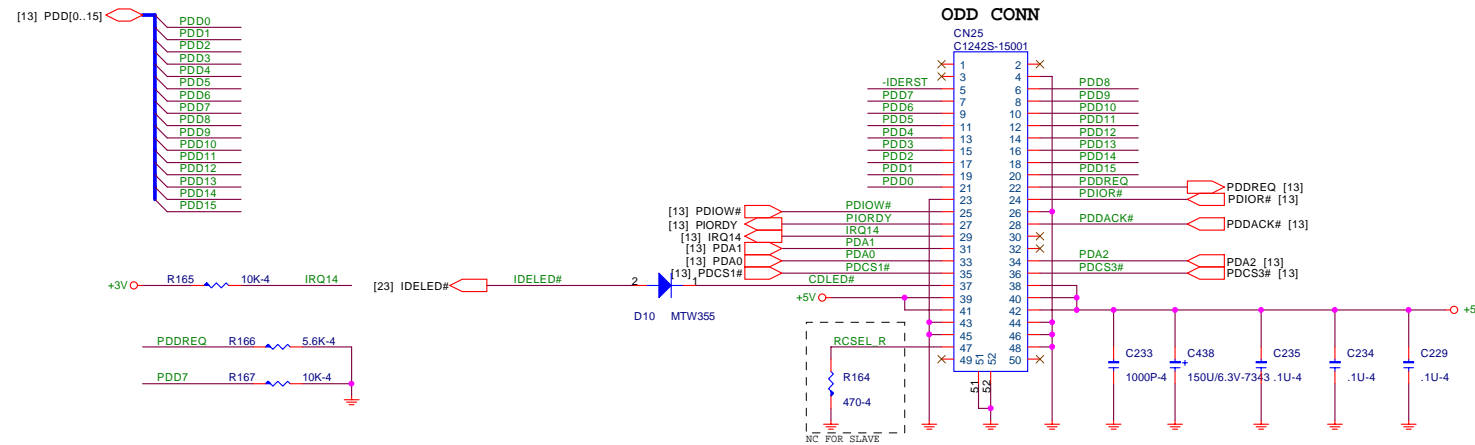
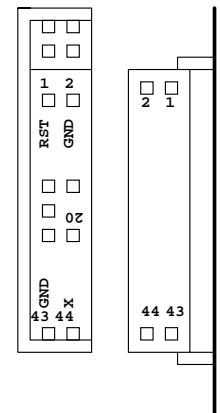




MakeSure Pin define 3/22 DEL STAT TO PATA bridge



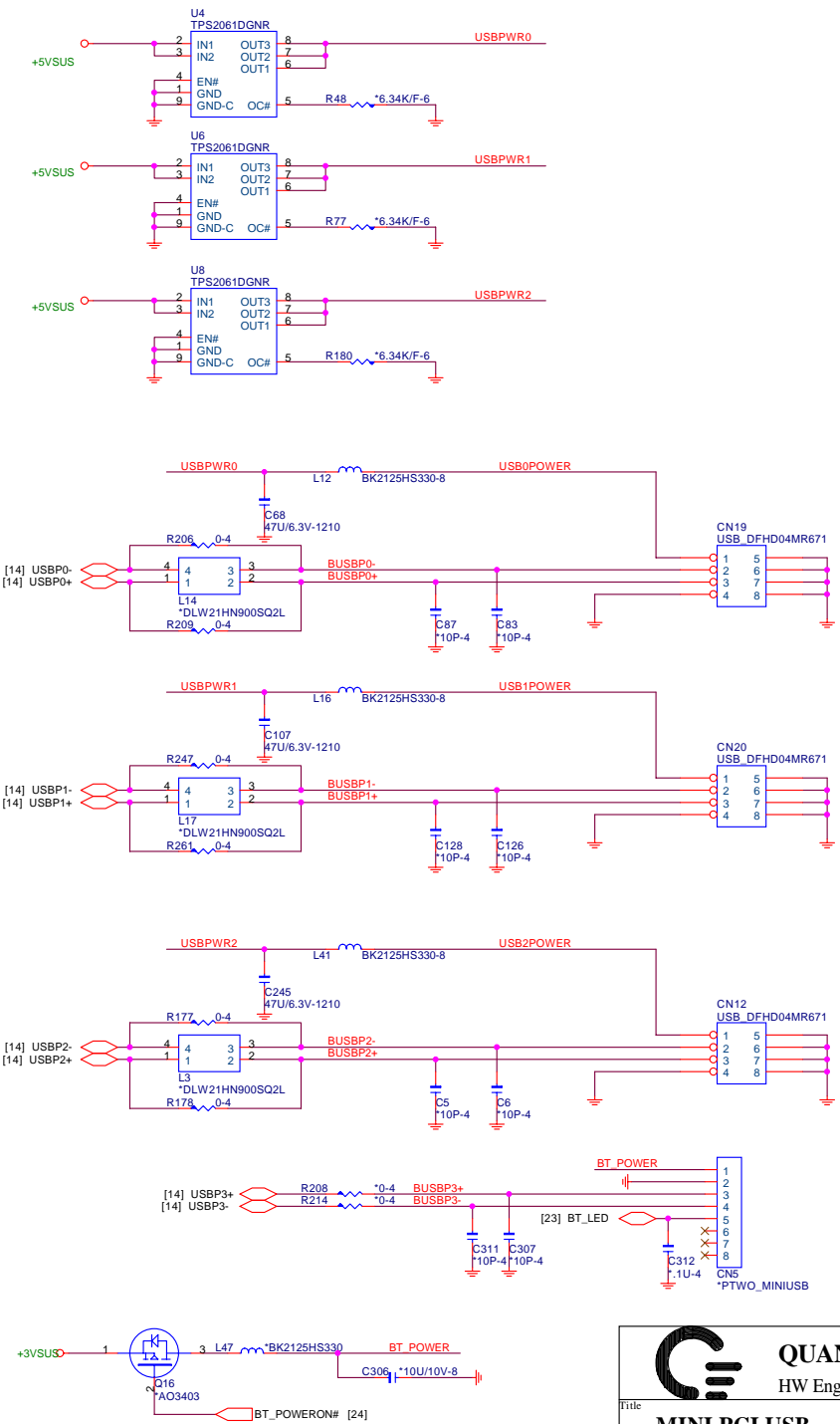
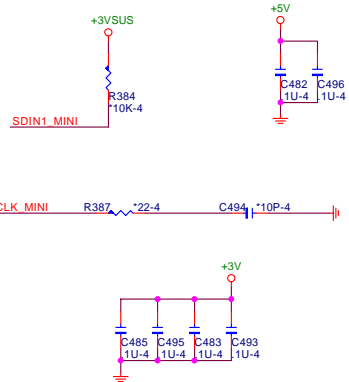
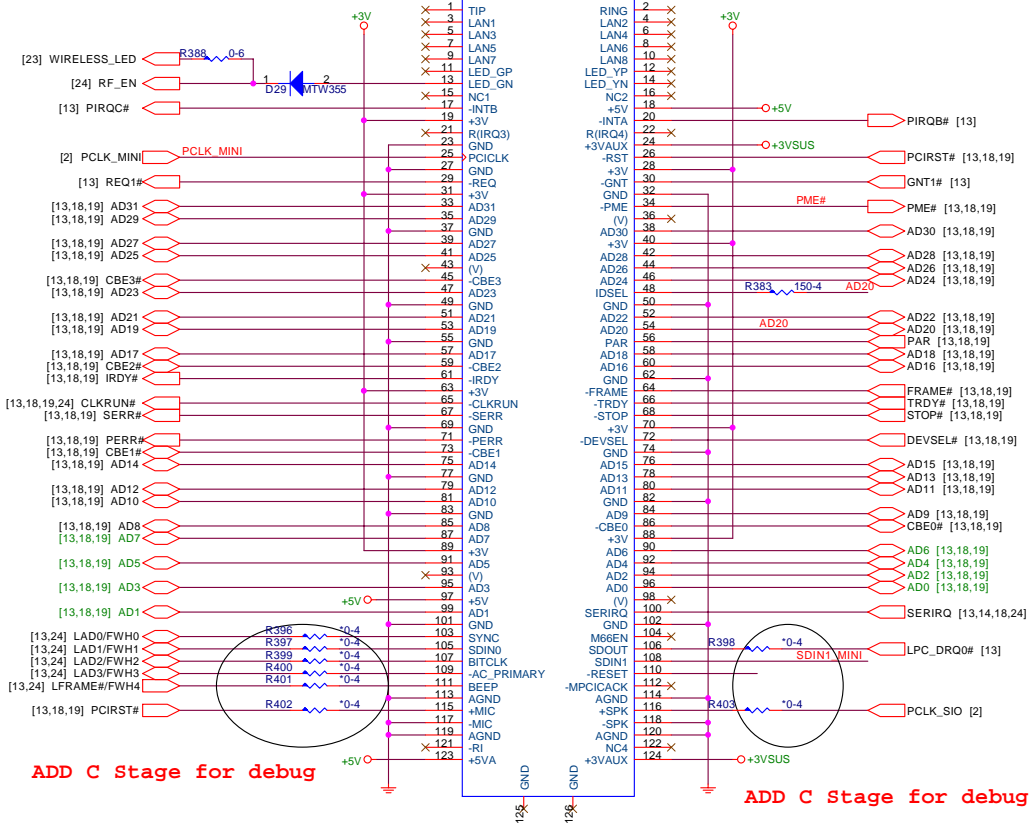
4/8 DEL  
C276, C270




ID Select : AD20  
Interrupt Pin : INTB# , INTC#  
Request Indicate : REQ1#  
Grant Indicate : GNT1#

### MINI-PCI

CN26  
QTC\_MINIPCI\_H7.95



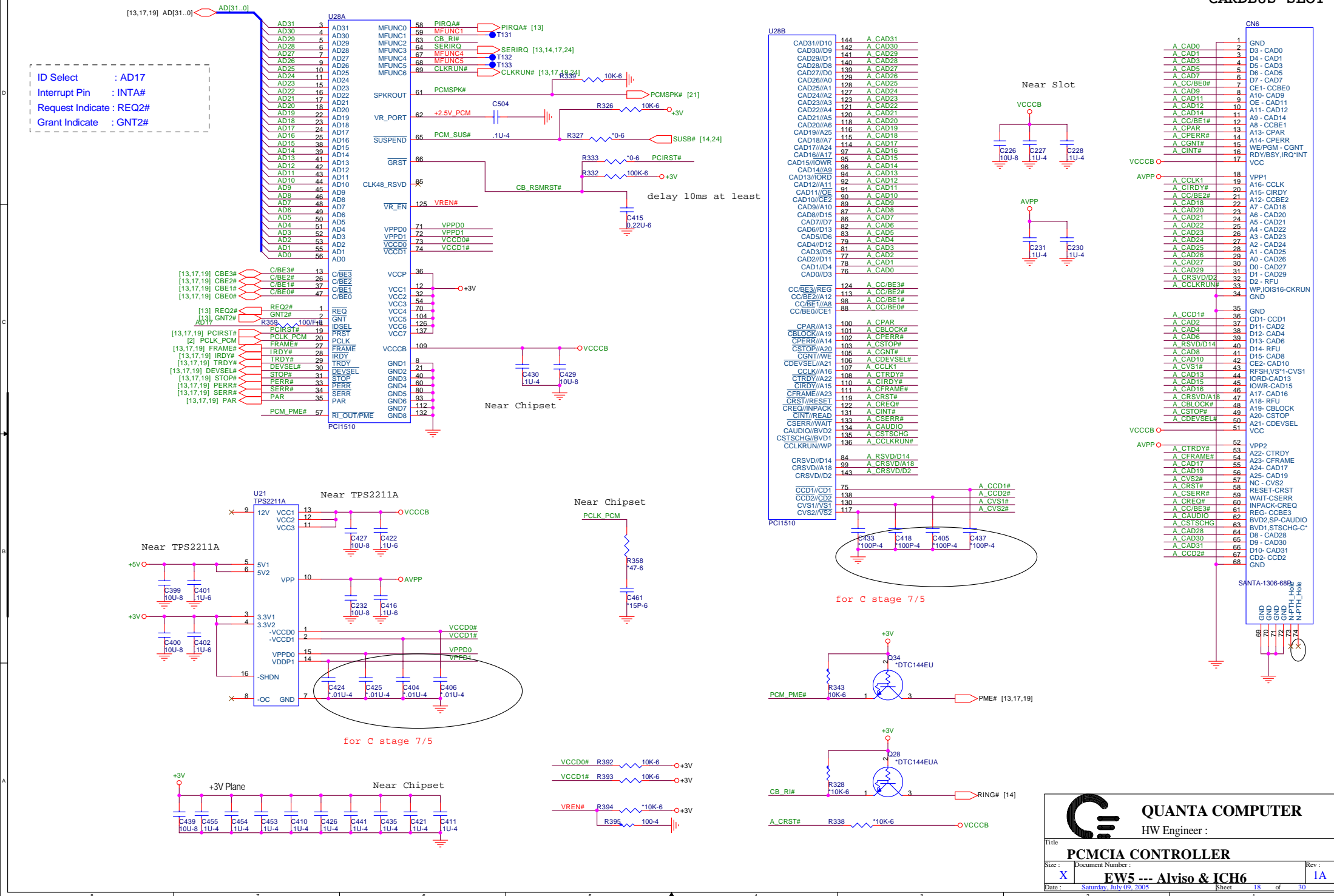
**QUANTA COMPUTER**  
HW Engineer :

Title : **MINI PCI,USB**

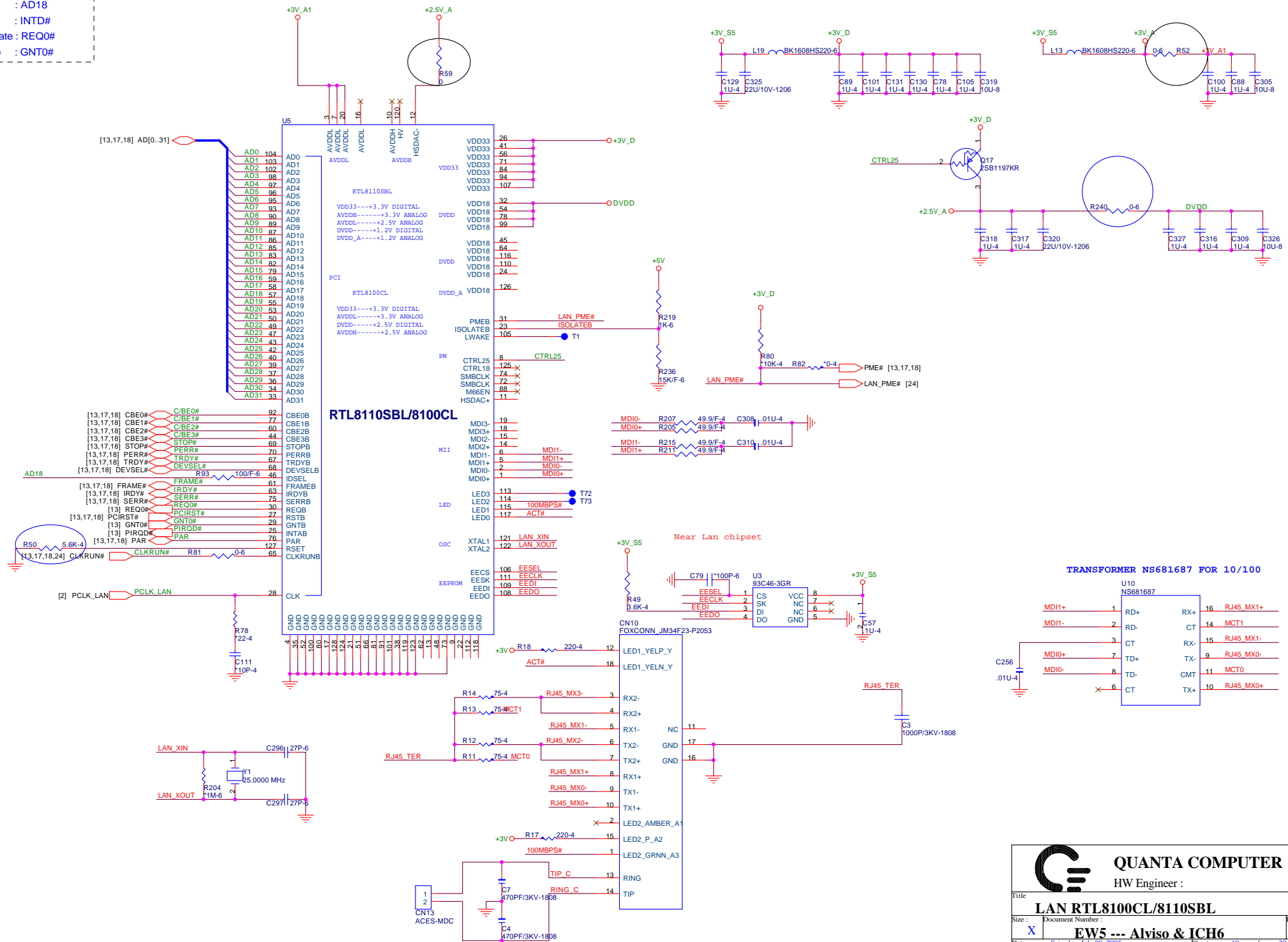
Size : **X** Document Number : **EW5 --- Alviso & ICH6** Rev : **1A**

Date : **Saturday, July 09, 2005** Sheet **17** of **30**

CARDBUS SLOT

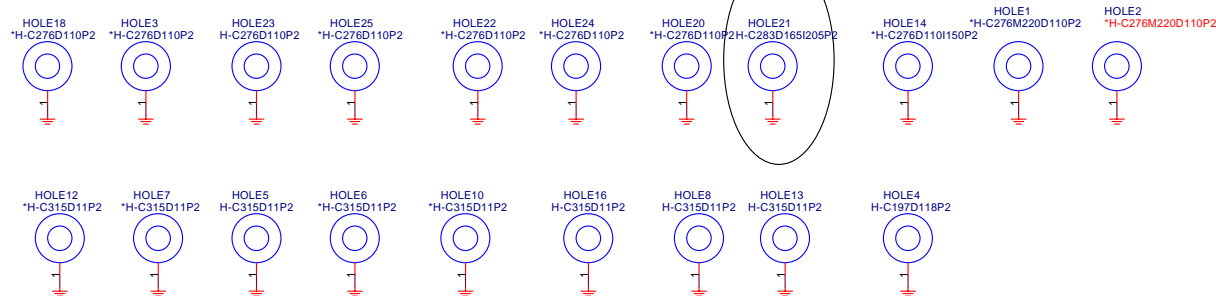


ID Select : AD18  
Interrupt Pin : INTD#  
Request Indicate : REQ0#  
Grant Indicate : GNT0#



# 4/ 8 CHANGE PCB Footprint

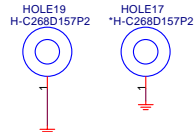
FOR M/B HOLE



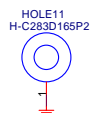
CHECK  
THIS

CHECK  
THIS

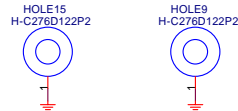
FOR MODEM MODULE



FOR CPU HEATSINK



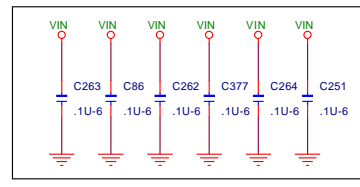
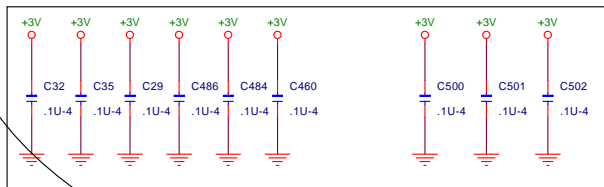
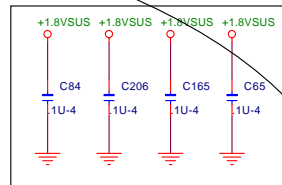
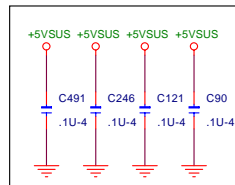
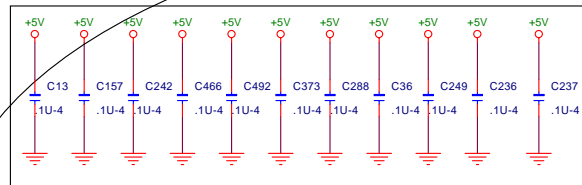
NEAR NORTHBRIDGE



08/23

4/8 ALL EMI C ADD

3/15 EMI ADD



3/15 EMI ADD

4/6 ADD EMI 3 pcs

4/8 CHANGE TO 0603 SIZE 25V



QUANTA COMPUTER

HW Engineer :

Title

HOLES

Size : X

Document Number :

Date :

Saturday, July 09, 2005

Sheet

20

of

30

Rev :

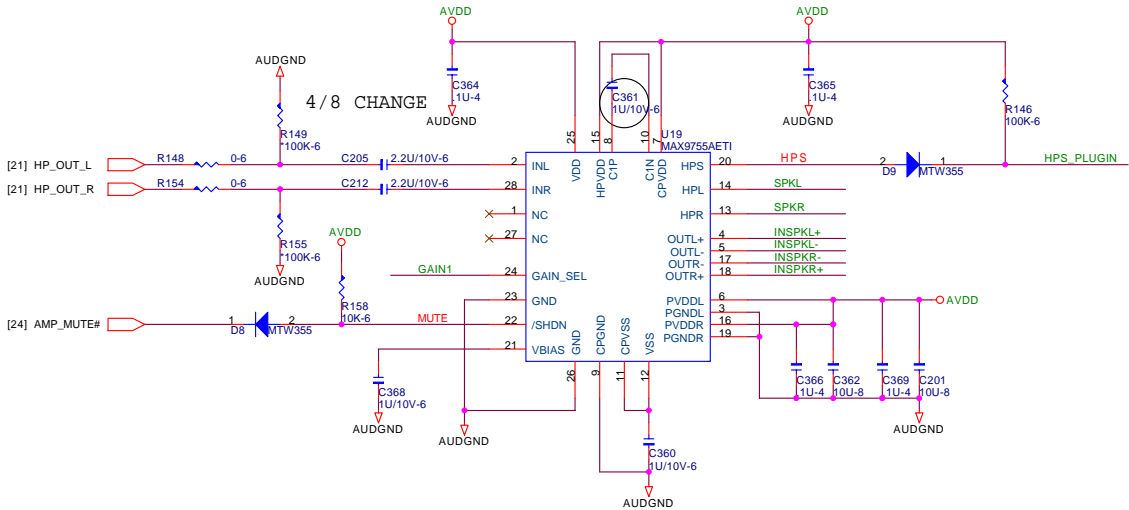
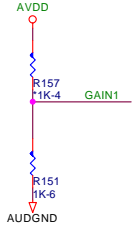
1A

EW5 --- Alviso & ICH6

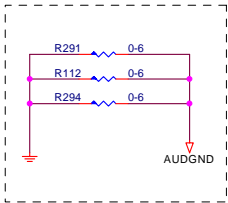
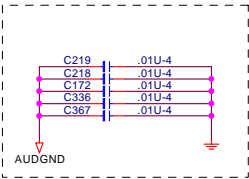
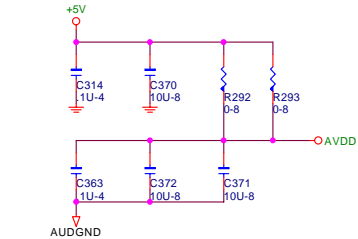




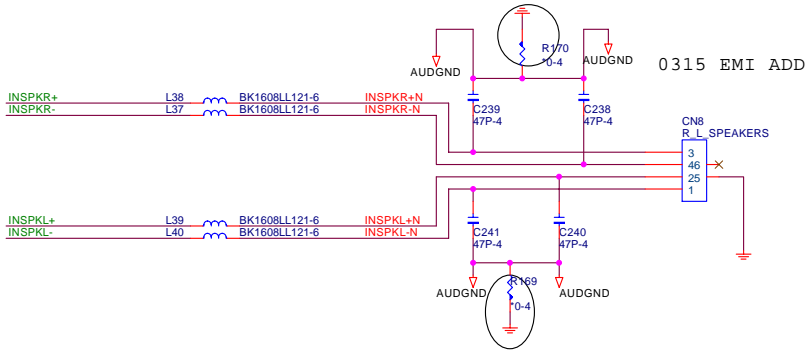
GAIN1	SPKR MODE	HP MODE
0	10.5	3
1	9	0



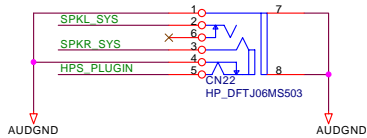
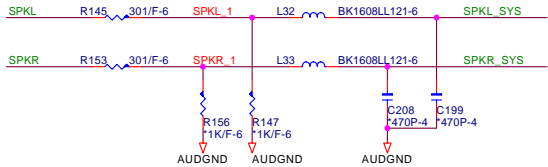
### AMP POWER




### SPEAKER CON.



### LINE-OUT





QUANTA COMPUTER

HW Engineer :

Title

AUDIO AMP

Size : X

Document Number :

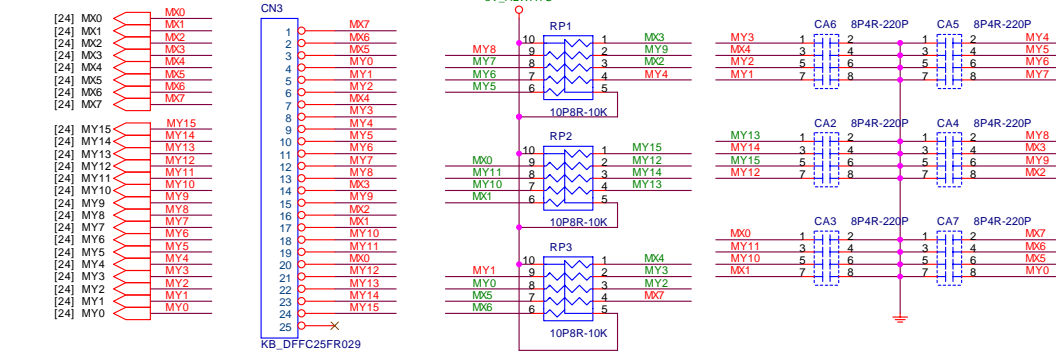
Date : Saturday, July 09, 2005

Rev : 1A

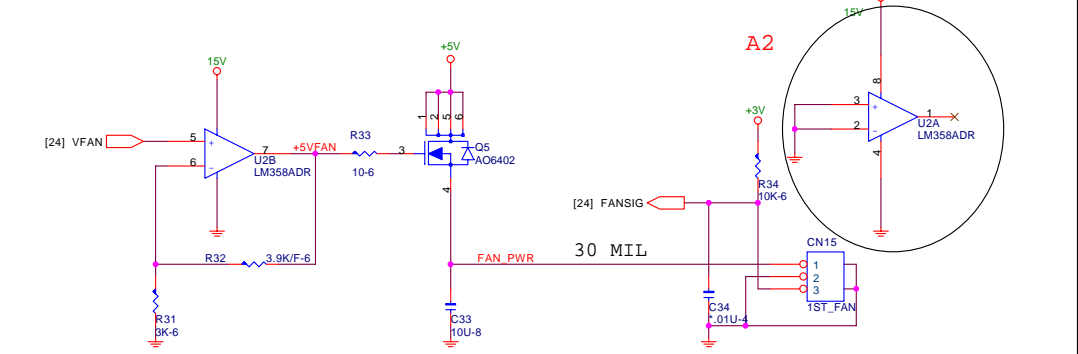
File Name : EW5 --- Alviso & ICH6

Sheet 22 of 30

INT K/B

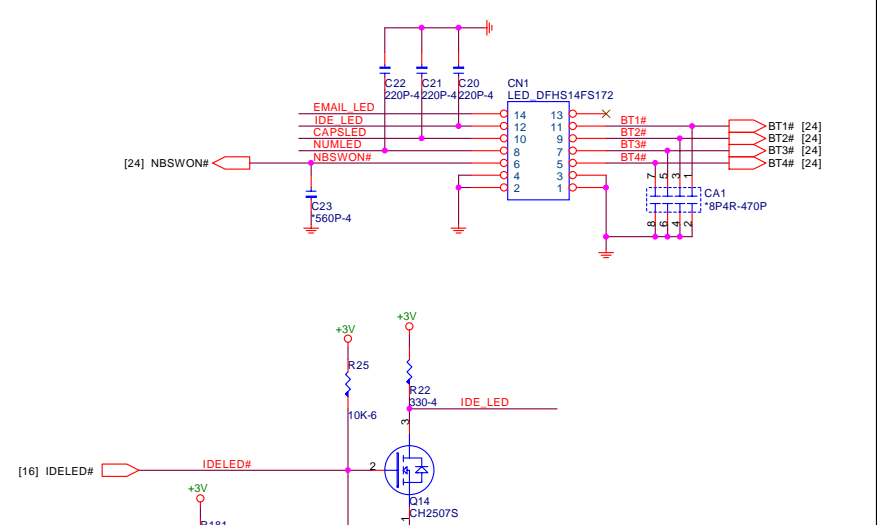
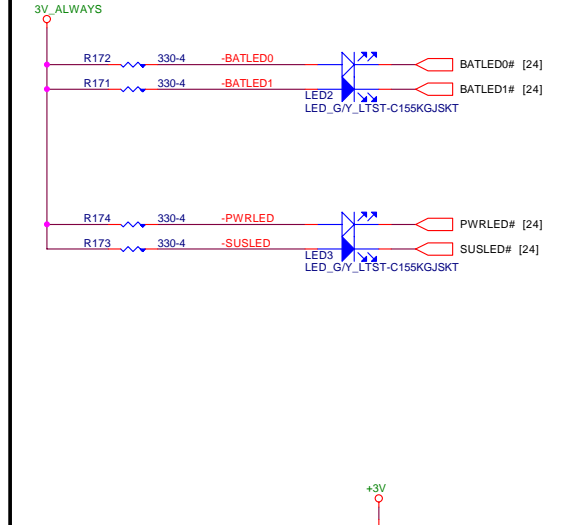
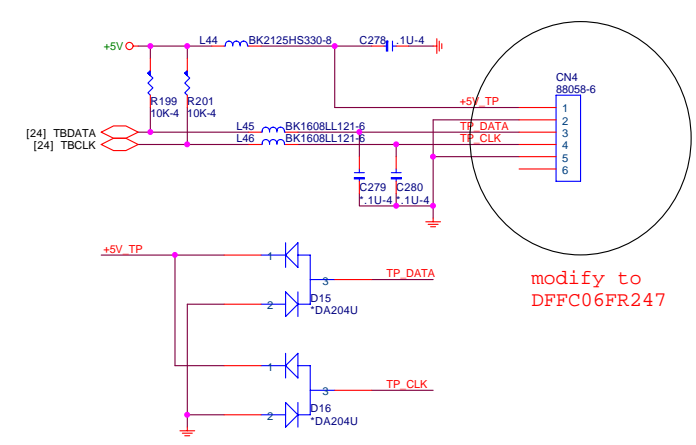


FAN CONTROL

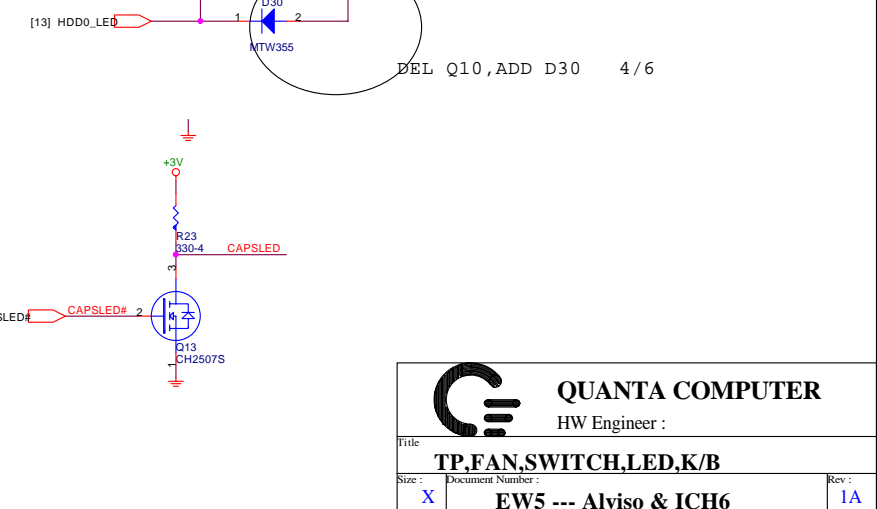
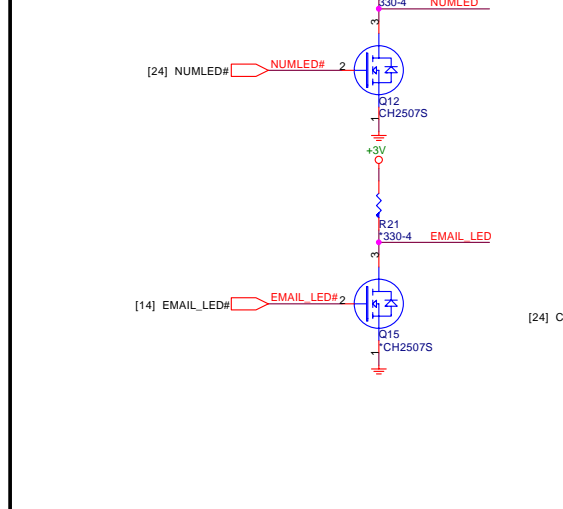
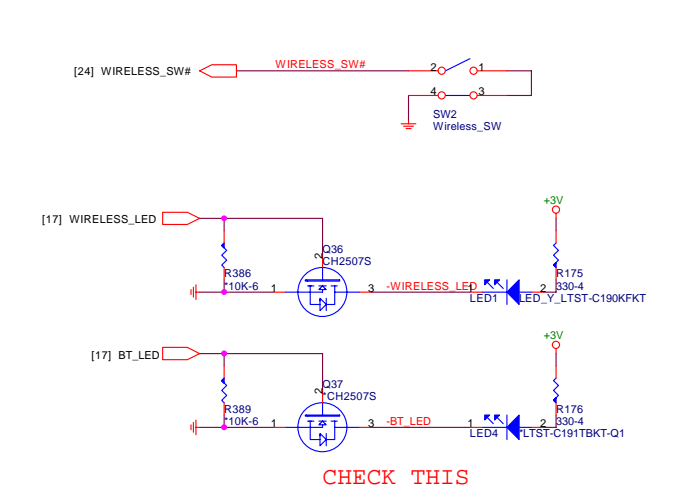


TOUCH PAD


20 MIL



WIRELESS SWITCH



CHECK THIS



QUANTA COMPUTER

HW Engineer :

Title

**TP,FAN,SWITCH,LED,K/B**

Size : **X**

Document Number :

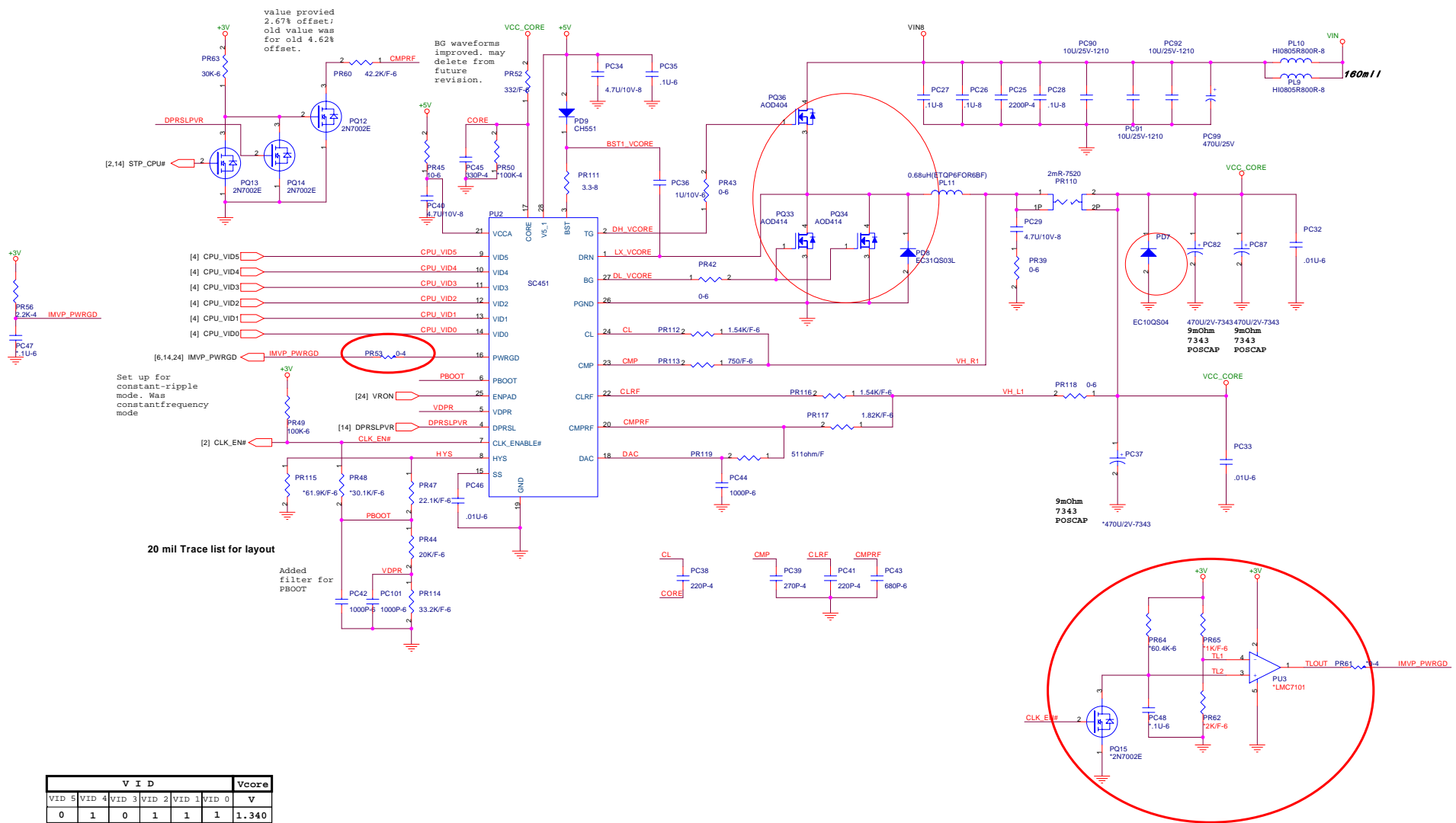
Date : **Saturday, July 09, 2005**

Rev : **1A**

**EW5 --- Alviso & ICH6**

Sheet 23 of 30





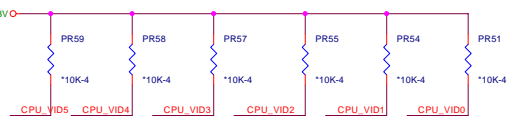
V I D							Vcore
VID 5	VID 4	VID 3	VID 2	VID 1	VID 0	V	
0	1	0	1	1	1	1.340	
0	1	1	0	0	0	1.324	
0	1	1	0	1	0	1.292	
0	1	1	1	0	0	1.260	
0	1	1	1	0	1	1.244	
0	1	1	1	1	1	1.212	
1	0	0	0	0	1	1.180	
1	0	0	0	1	1	1.148	
1	0	0	1	1	0	1.100	
1	0	1	0	0	1	1.052	
1	0	1	0	1	1	1.020	
1	0	1	1	1	0	0.972	
1	1	0	0	0	0	0.940	

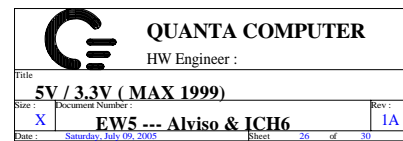
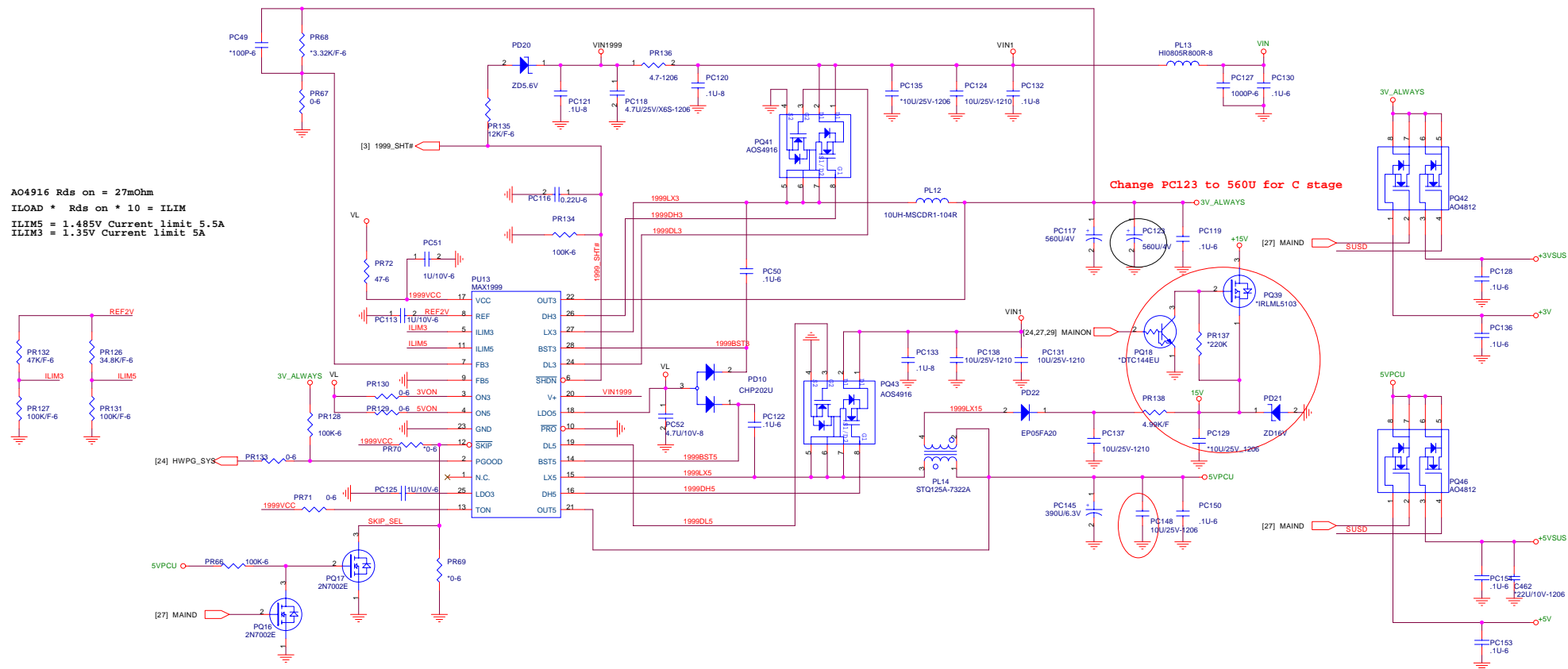
100 mil Trace list for layout

DH\_VCORE  
LX\_VCORE  
DL\_VCORE  
DH\_VCORE2  
LX\_VCORE2  
DL\_VCORE2

10 mil Trace list for layout

SC1476  
pin 4  
pin 5  
pin 7  
pin 25  
pin 30

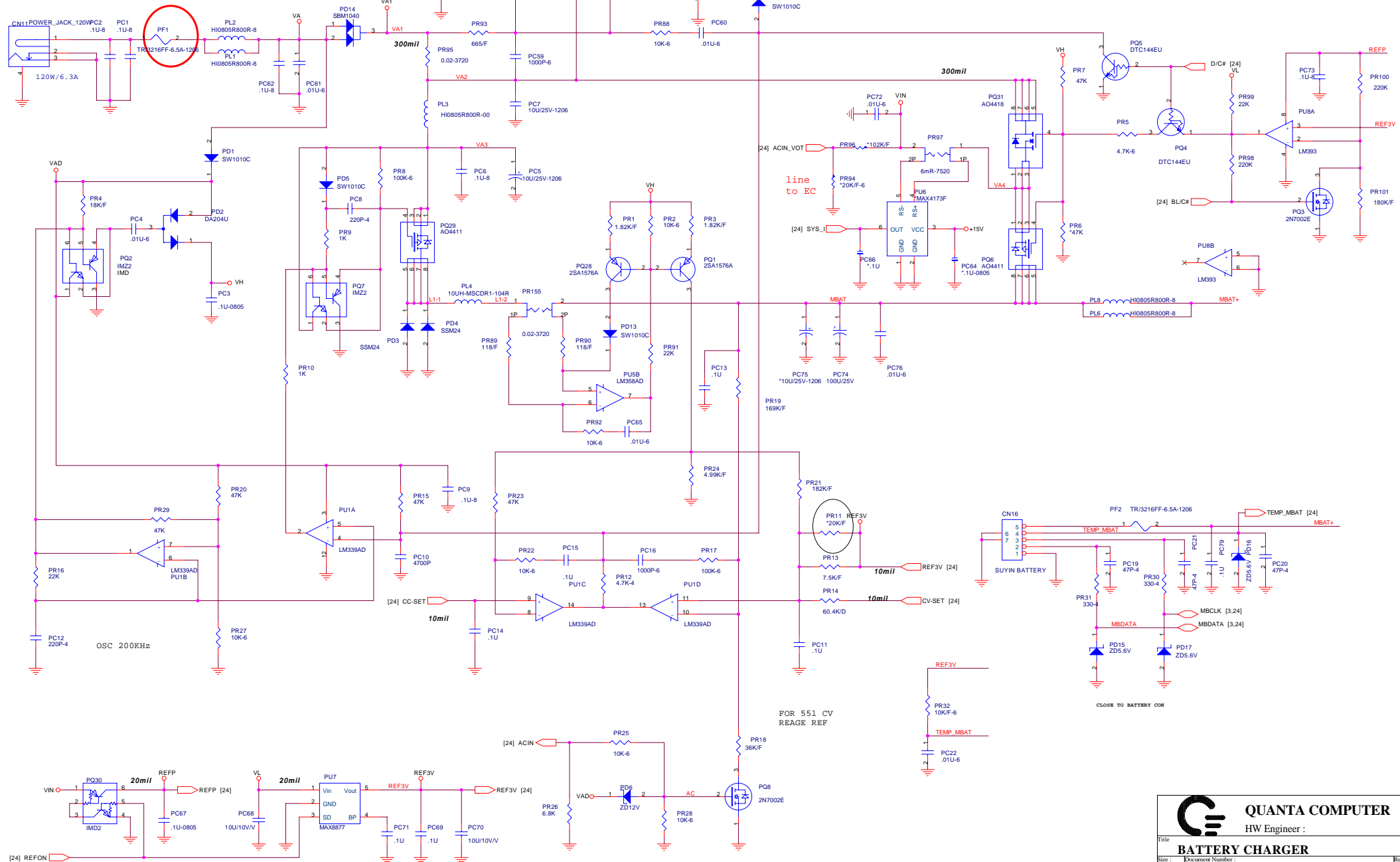


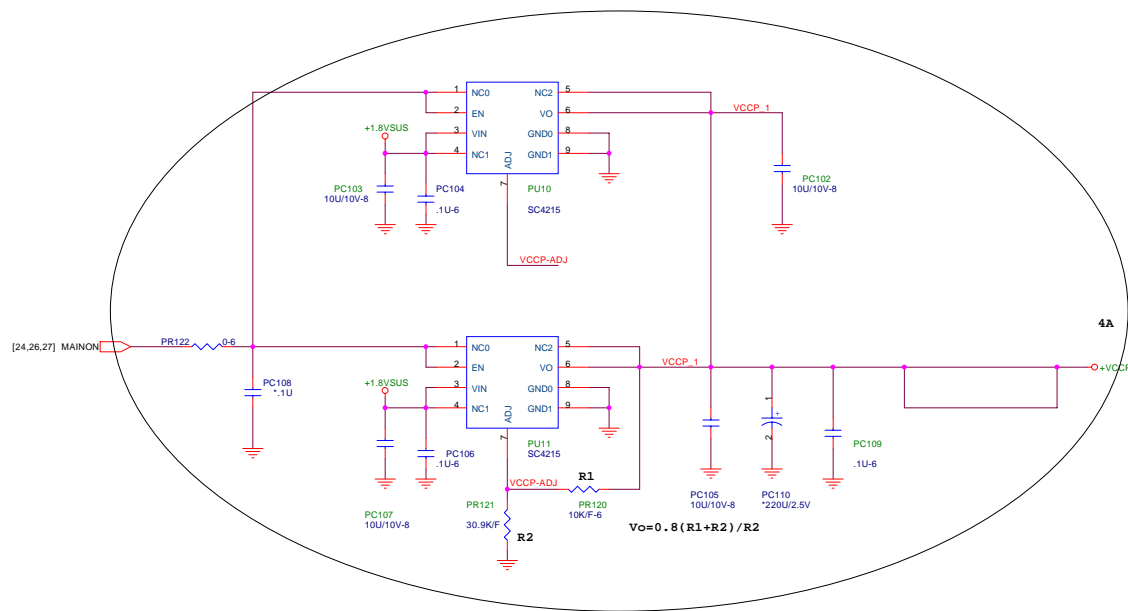






6/4 change ED1 connector





DATE\_VER.

MODIFIED BY

CHANGE LIST

2005/3/7\_REVA2

First Version

1. change C201 470U/2.5V-7343,C205 220U/2.5V-3528 location and values
2. Change C541, C542 to 150p to fixed modem can't dial question
3. Change C533,C534 from 1U to 2.2U to fixed Audio measurement fail issued
4. ADD C570 10U to fixed system hard to power on, and change R252 to 1K
5. Remove R241, R243 , and Add R85
6. Add RP11 for internal LVDS
7. Change DDR2 connector to PI
8. Remove Q27, Q23, VGA PWRGD
9. Change battery charger and VCCP schematic.

LAYOUT Notice

1. modem must keep the safety region
2. move under CPU side CAP, to meet the ME request.
3. remove C201,C205 to meet the ME request
4. routing USB signals to avoid EMI risk

2005/6/16\_REVC

- 1.Add debug card schematic at MINI PCI for C stgae  
Add R396,R397,R398,R399,R400,401,R402,R403 location, but don't SMT
- 2.Change Q22 pull high voltage to ICH\_POROK to avoid system can't power on risk , and Change thermal IC to ADM1032ARZ-1
- 3.Change 3V\_ALWAYS PC123 to 560U, EC side add C506 150U
- 4.For RTC testing fail , to change C413,C414 to 18P
- 5.For ME request change BOM PC141 to PC140.
- 6.For LID wakeup function , add C505 .1U to GND
- 7.For EC X'TAL can't work fine issued, change R364 values to 68k
- 8.move PAD1, PAD2 to right location.
- 9.Change LCD connector footprint ( asked paggy to offer footprint)
- 10.Touch PAD click nosie too large, change switch to 100g pressure.
11. Add 3V\_ALWAYS trace width to 120mil.
- 12.SM BUS signals trace width to 10 mil.
- 13.remove R185
- 14.Change Q2,Q3,Q4,Q11,to BSS138LT1



QUANTA COMPUTER

HW Engineer :

Title

CHANGE LIST

Size :

X

Document Number :

EW5 --- Alviso & ICH6

Rev :

1A

Date :

Saturday, July 09, 2005

Sheet

30

of

30