

8. Block Diagram and Schematic

<p style="text-align: center;">SAMSUNG PROPRIETARY THIS DOCUMENT CONTAINS CONFIDENTIAL INFORMATION AND IS THE PROPERTY OF SAMSUNG ELECTRONICS CO. S. PROPERTY. IT IS NOT TO BE DISCLOSED TO OR REPRODUCED BY ANY OTHERS WITHOUT THE EXPRESS WRITTEN AUTHORIZATION OF SAMSUNG.</p>		
<h1>Bloomington</h1>		
<p>CPU : INTEL PINEVIEW-W-M Chip Set : INTEL TIGERPOINT-M Remarks :</p>		
<p>Model Name : PINE TRAIL-M PCB Part No :</p>		
<p>Dev. Step : PV2 Revision : 0.9 T.R. Date : 2009.11.09</p>		
DRAW	CHECK	APPROVAL
<p style="text-align: center;">Table of Contents</p>		
Page. 1	COVER	Page. 1
Page. 2	OPERATION BLOCK DIAGRAM	Page. 2
Page. 3	BOARD INFORMATION	Page. 3
Page. 4~6	POWER DIAGRAM / SEQUENCE	Page. 4~6
Page. 7	CLOCK DISTRIBUTION	Page. 7
Page. 8	CLOCK GENERATOR (CK-505M)	Page. 8
Page. 9	THERMAL MONITOR	Page. 9
Page. 10~12	PINEVIEW-W (N450/N470 CPU)	Page. 10~12
Page. 13~15	TIGERPOINT (NM10 CHIPSET)	Page. 13~15
Page. 16	SPI ROM & DEBUG PORT	Page. 16
Page. 17	DDR2 SODIMM	Page. 17
Page. 18	CRT CONN.	Page. 18
Page. 19	LCD (LVDS) CONN.	Page. 19
Page. 20	HD DECODER (BROADCOM BCM70015)	Page. 20
Page. 21	AUDIO CODEC (ALC269Q-GR)	Page. 21
Page. 22	AMP & WOOFER	Page. 22
Page. 23	HP & MIC & INT. MIC	Page. 23
Page. 24	LAN (10/100)	Page. 24
Page. 25	HDD CONNECTOR (SATA)	Page. 25
Page. 26	MINI-CARD (Wireless & HSDPA/WiBro)	Page. 26
Page. 27	USB	Page. 27
Page. 28	BT & CAMERA & TSP	Page. 28
Page. 29	CARDBUS CONTROLLER (GL823)	Page. 29
Page. 30	MICOM (MEC1308)	Page. 30
Page. 31	KBD CONN & MICOM GLUE LOGIC	Page. 31
Page. 32	LED Logic	Page. 32
Page. 33	Free Fall Sensor	Page. 33
Page. 34	CPU VRM POWER (VCC CORE)	Page. 34
Page. 35	CHIPSET POWER (P1.05V, P1.5V & P1.2V)	Page. 35
Page. 36	DDR2 POWER	Page. 36
Page. 37	P3.3V AUX & P5V_AUX	Page. 37
Page. 38	CHARGER	Page. 38
Page. 39	GRAPHICS POWER (P0.89V)	Page. 39
Page. 40	SWITCHED POWER	Page. 40
Page. 41	POWER DISCHARGER	Page. 41
Page. 42	BLANK PAGE (TBD)	Page. 42
Page. 43	MOUNT HOLE	Page. 43
Page. 44~45	TEST POINTS	Page. 44~45

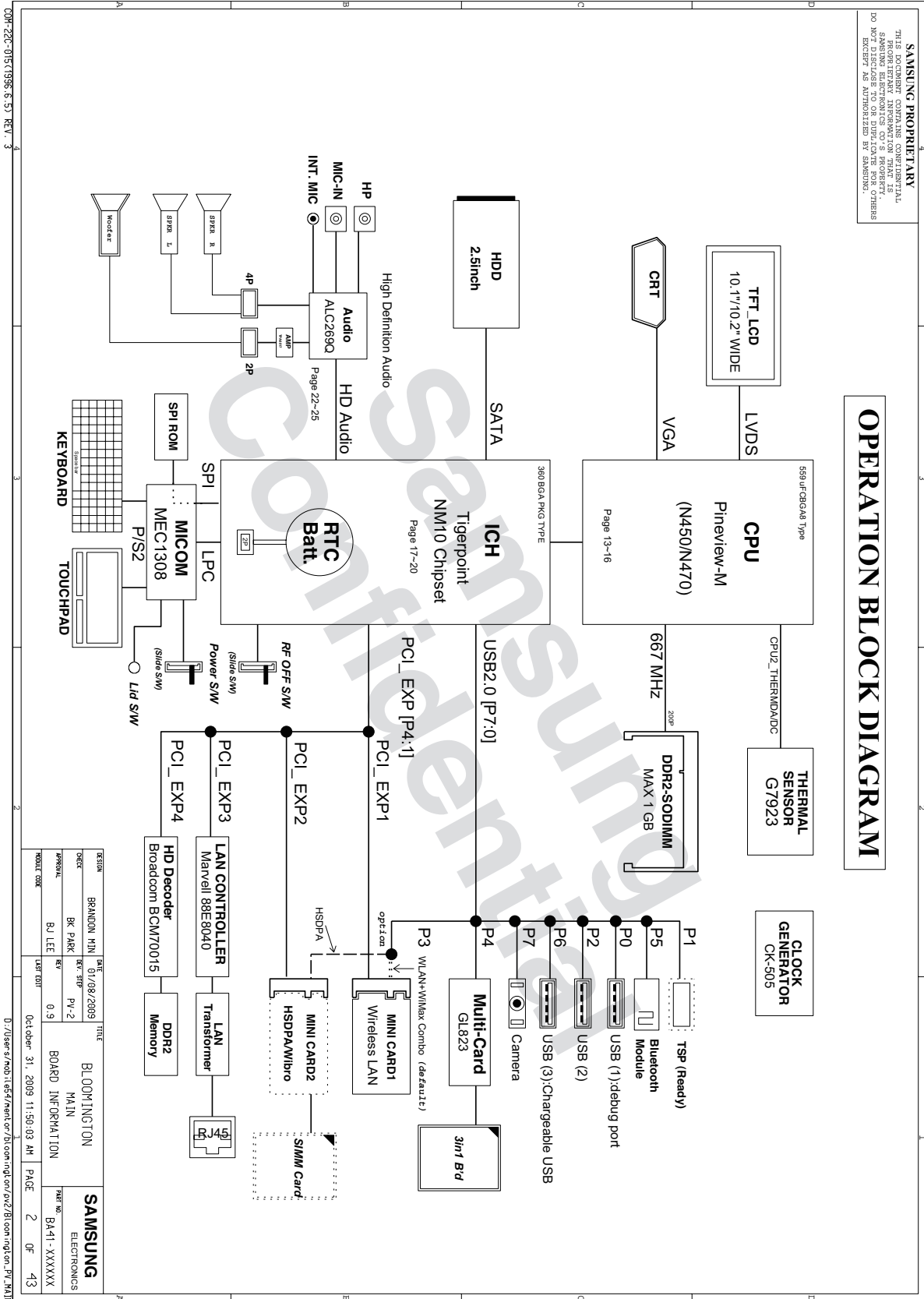
CON-226-015T1386.6.57 REV. 3

D:\user6\mob\csl\p\ent\or\h\com\ngt\on\p\z\bl\com\ngt\on_P\MAIN

DESIGN	BRANDON MIN	DATE	11/09/2009	FILE	BLOOMINGTON	SAMSUNG
CHECK	BR PAK	REV	PV-2		MAIN	ELECTRONICS
APPROVAL	BJ LEE	REV	0.9		COVER	PART NO. BA41-XXXXXX
MOULD CODE		LAST EDIT	Oct-09 11:50:03 AM	PAGE	1	OF 43

- 이 문서는 삼성전자의 기술 자산으로 승인자만이 사용할 수 있습니다 -
 - This Document can not be used without Samsung's authorization -

8. Block Diagram and Schematic



8. Block Diagram and Schematic

BOARD INFORMATION

THIS DOCUMENT CONTAINS CONFIDENTIAL INFORMATION AND IS THE PROPERTY OF SAMSUNG ELECTRONICS CO.'S PROPERTY. IT IS NOT TO BE DISCLOSED TO OR REPRODUCED BY ANY OTHERS WITHOUT THE APPROVAL OF SAMSUNG.

SAMSUNG PROPRIETARY

SCHEMATIC ANNOTATIONS AND BOARD INFORMATION

PCI Devices	IOSEL#	REQINT#	Interrupts
USB PCI PC Bridge/EAC/PS/MS/US Internal MAC	AD24(Internal) AD31(Internal) AD24(Internal)	Programmable	

PC / SMB Address	Address	Hex	Bus
ICPTM	Master		SMBUS Master
MSOFTM	110 000X	D0h	Clock Unused Clock Output Disable
SCSMM	110 000X	A0h	Thermal Sensor
CPUTHM	0111 101X	7Ah	

USB PORT Assign			
Port Number	ASSIGNED TO	Port Number	ASSIGNED TO
UHCL_0	USB PORT	UHCL_2	USB PORT
UHCL_1	Wireless LAN	UHCL_3	HSP/A
UHCL_3	BLUETOOTH	UHCL_7	CAMERA

PCI Express Assign	
Port Number	ASSIGNED TO
1	Mini Card 1(Wireless LAN)
3	Mini Card 2 (HSDPA/WiBro)

Voltage Rails	Descriptions
Power Rail	
PRTC_BAT	3.3V (can drop to 2.0V min. in G3 state) supply for the RTC wall.
PRTC_GSMCP	Primary DC system power supply (9 to 19V)
PR3_3V_MICOM	3.3V always power rail (in S3-S5)
P1_1V_AUX	1.5V switched power rail (off in S3-S5)
P2_0.9V	0.9V power rail for DDR (off in S4-S5)
P2_0.9V_AUX	0.9V power rail (off in S4-S5)
P2_1V_AUX	5.0V power rail (off in S4-S5)
P2_1V_AUX	5.0V power rail (off in S4-S5)
P2_1V_AUX	5.0V switched power rail (off in S3-S5)
P3_3V	3.3V switched power rail (off in S3-S5)
CPUL_CORE	Core voltage for Atom CPU

DATE	01/08/2009	TITLE	BLOOMINGTON MAIN POWER SEQUENCE
DESIGNER	BRANDON MIN	DATE	01/08/2009
PERSONAL	BK PARK	REV	PV-2
MODEL CODE	BJ LEE	SCALE	0.9
		DATE	October 31, 2009 11:50:03 AM

PAGE	3
OF	43

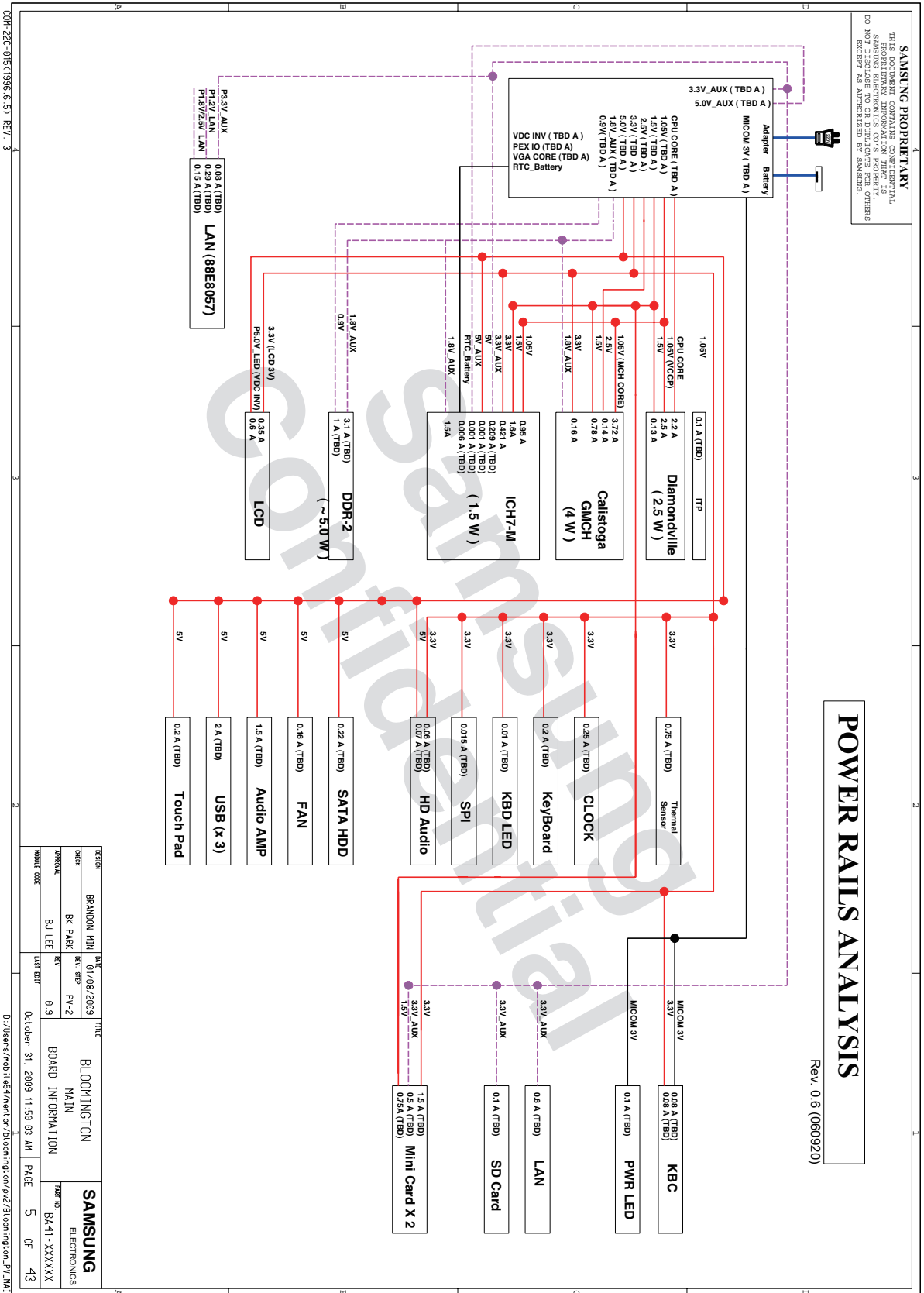
D:\Users\smob11647\ent\cr\bl\com\ng\on\p2\B1rom\ng\on_PV_MAIN

N220, N210, N150, NB30

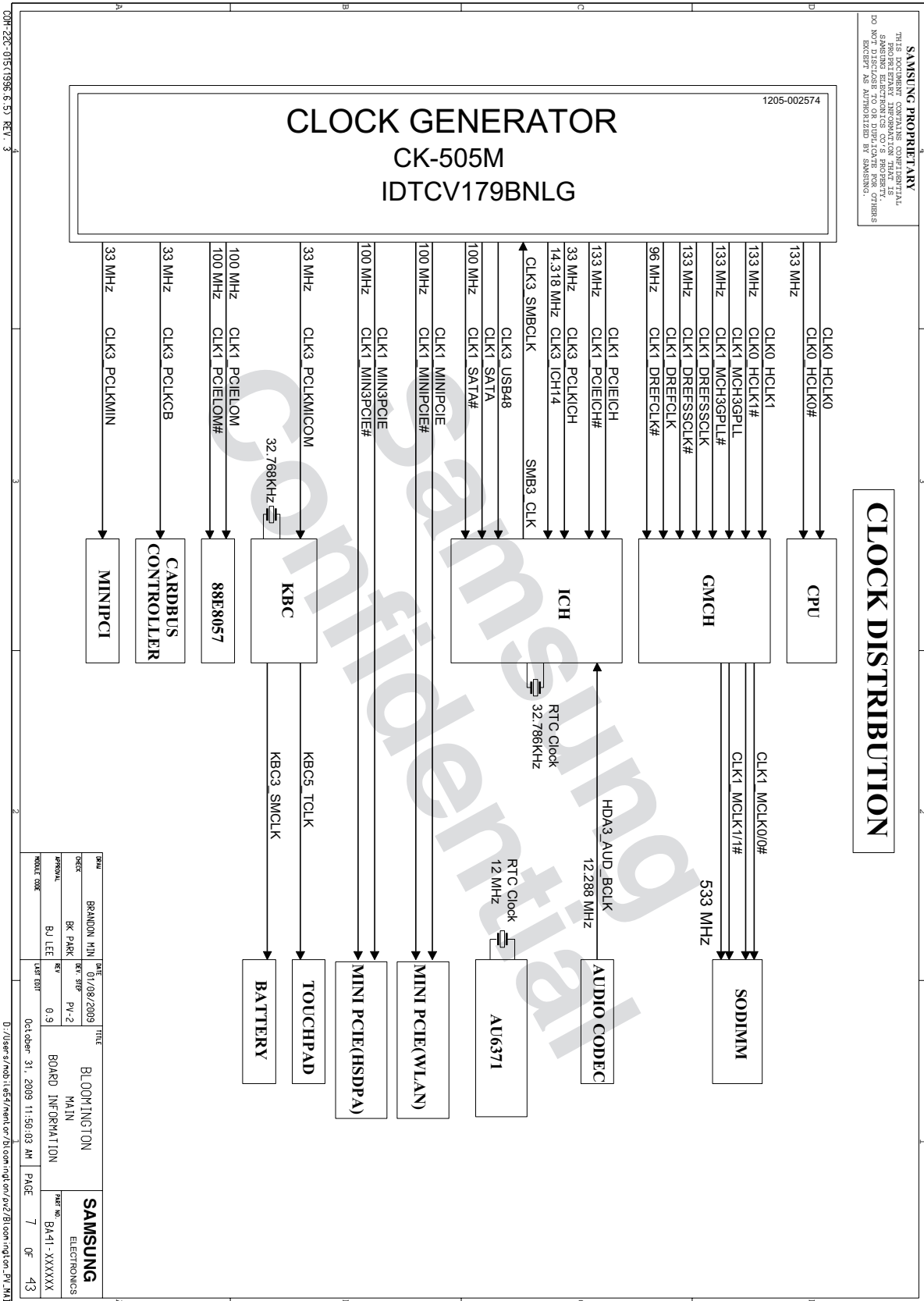
8-3

- 이 문서는 삼성전자의 기술 자산으로 승인자만이 사용할 수 있습니다 -
 - This Document can not be used without Samsung's authorization -

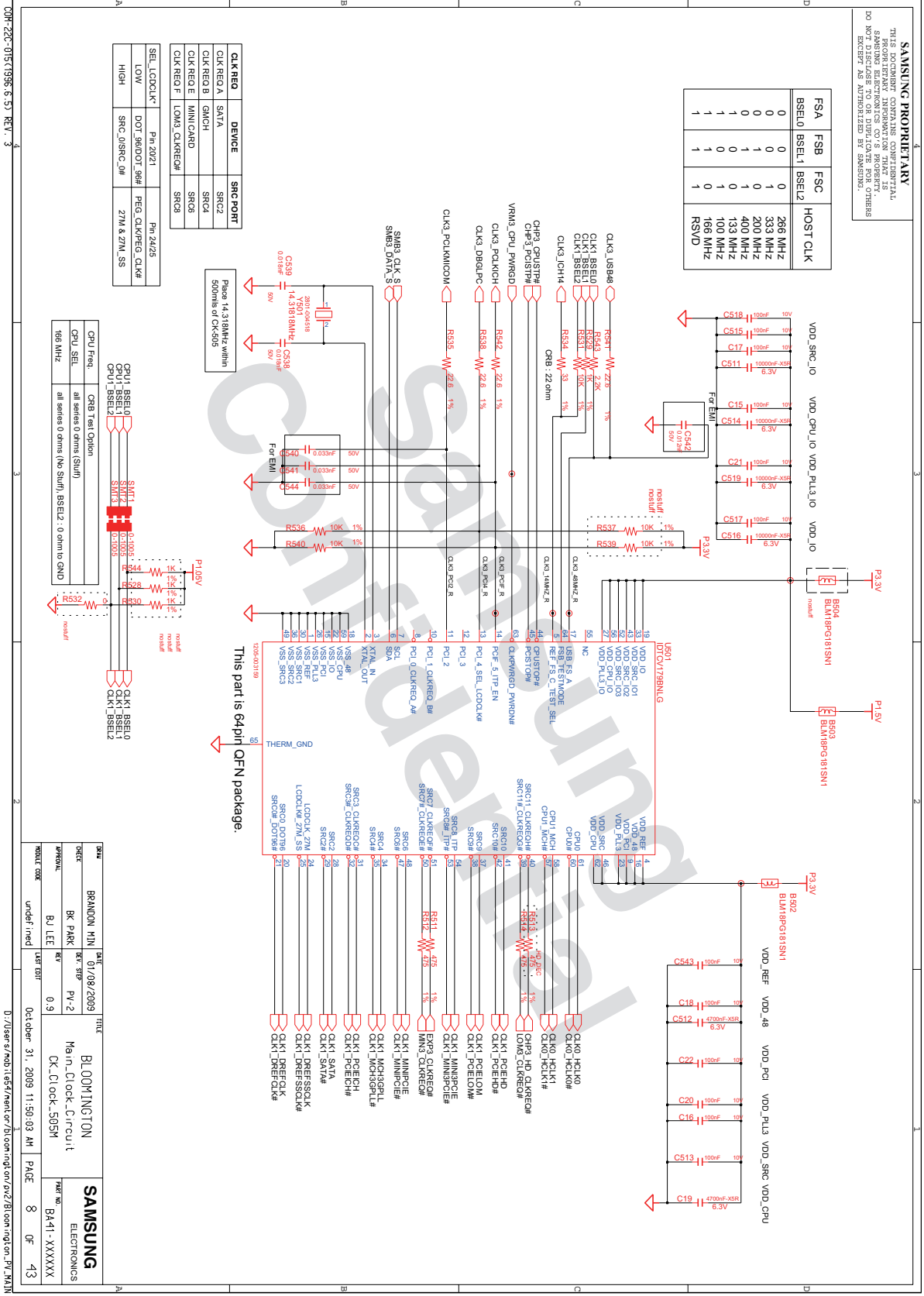
8. Block Diagram and Schematic



8. Block Diagram and Schematic

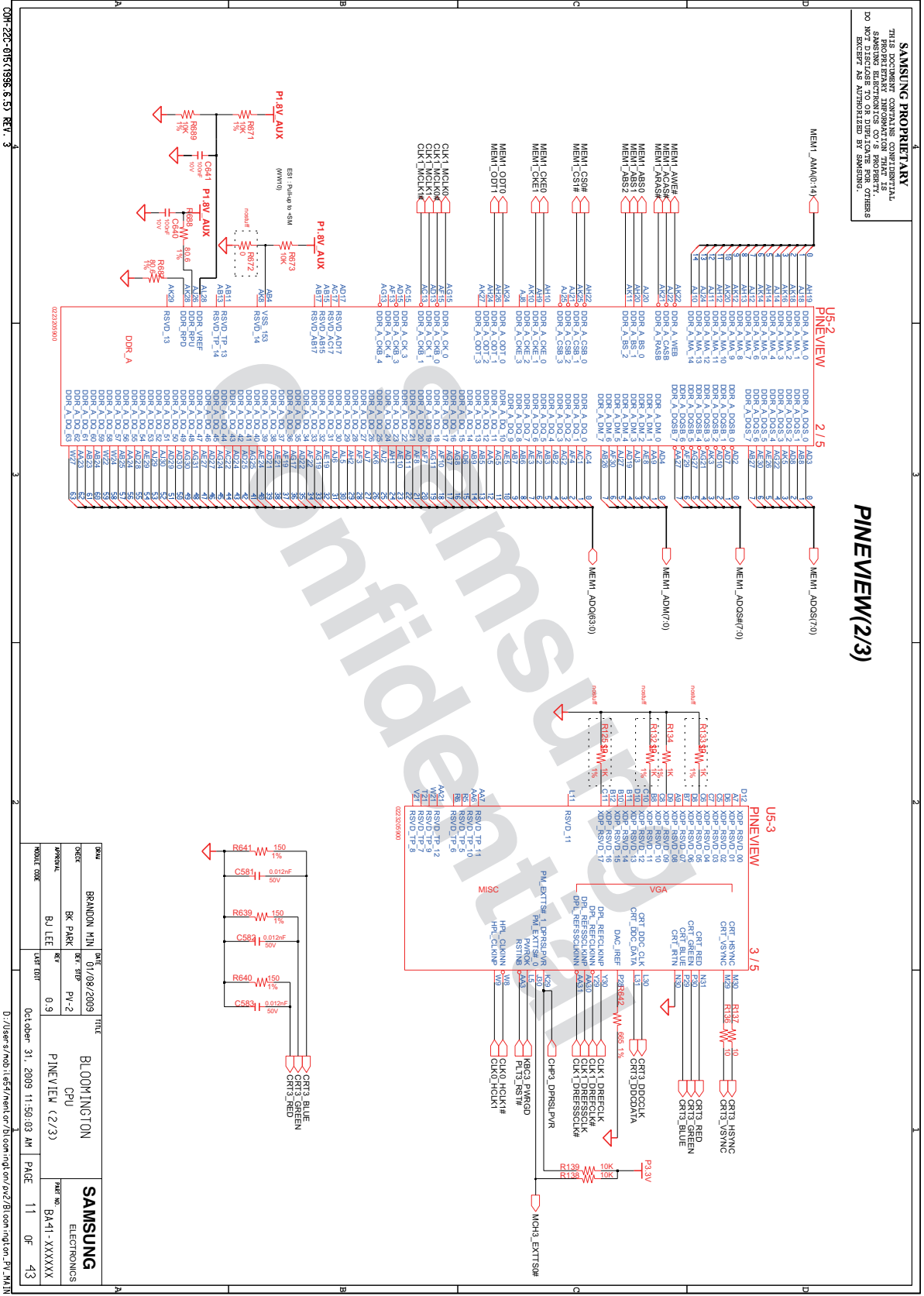


8. Block Diagram and Schematic

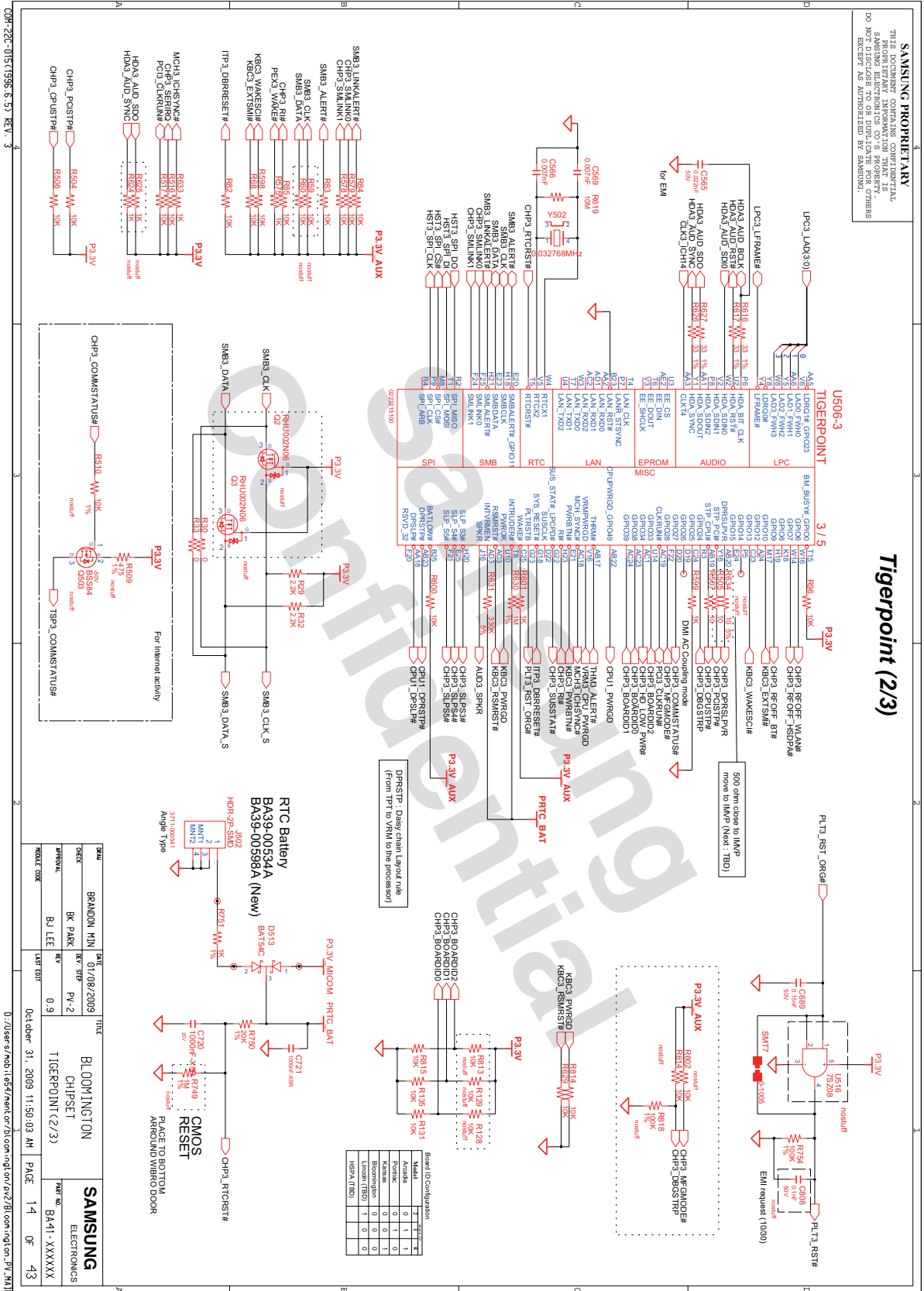


- 이 문서는 삼성전자의 기술 자산으로 승인자만이 사용할 수 있습니다 -
 - This Document can not be used without Samsung's authorization -

8. Block Diagram and Schematic

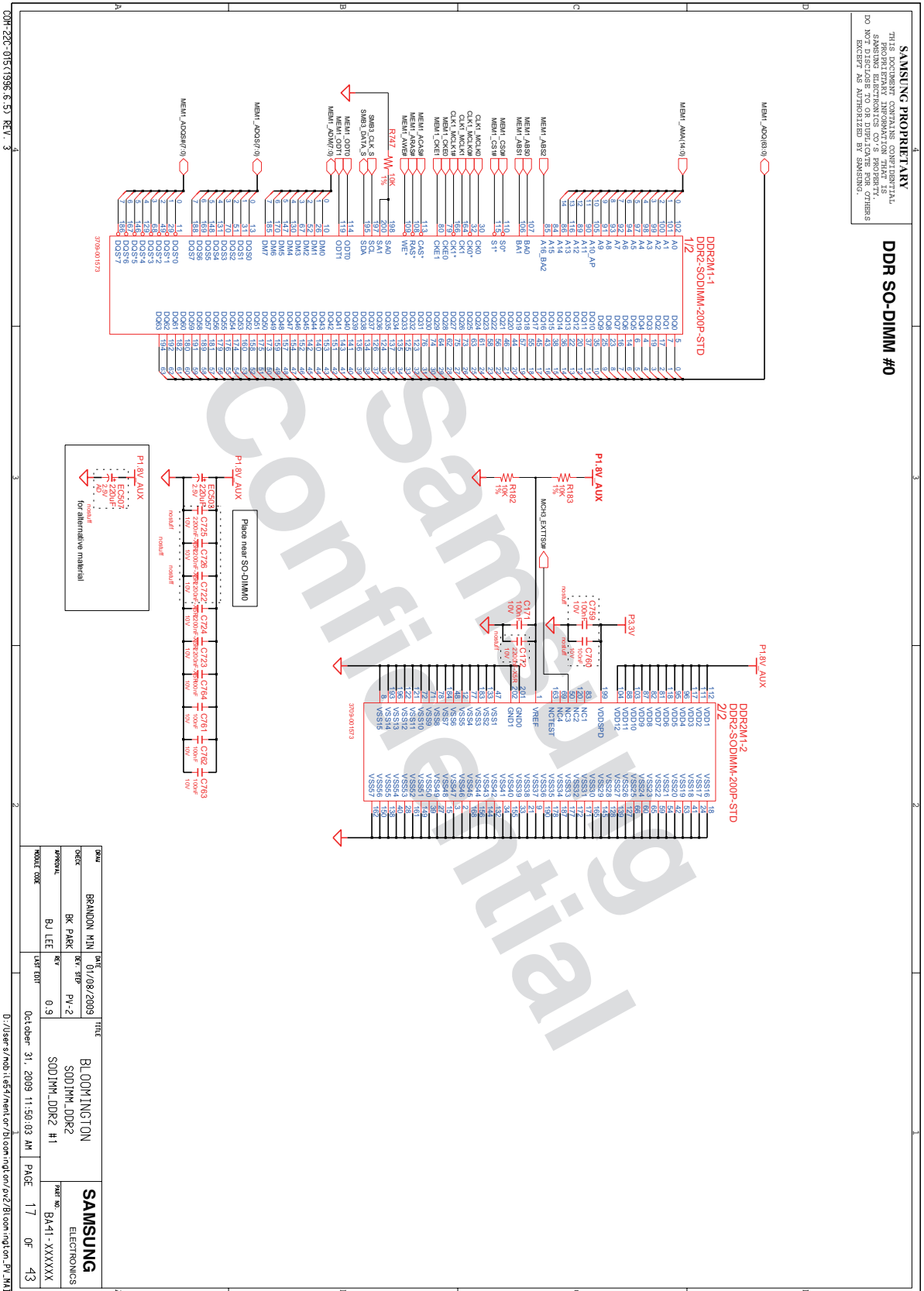


8. Block Diagram and Schematic



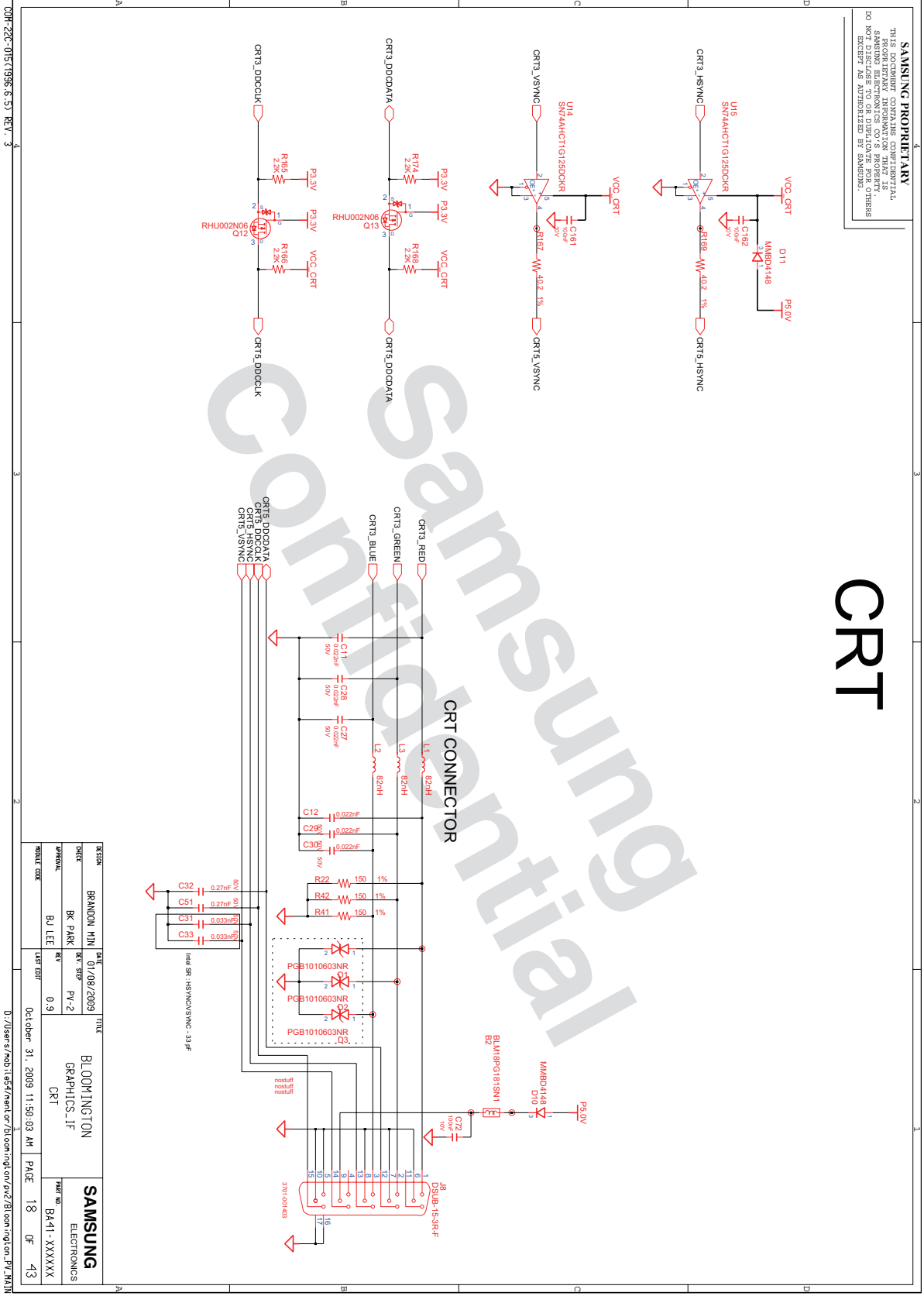
- 이 문서는 삼성전자의 기술 자산으로 승인자만이 사용할 수 있습니다 -
 - This Document can not be used without Samsung's authorization -

8. Block Diagram and Schematic



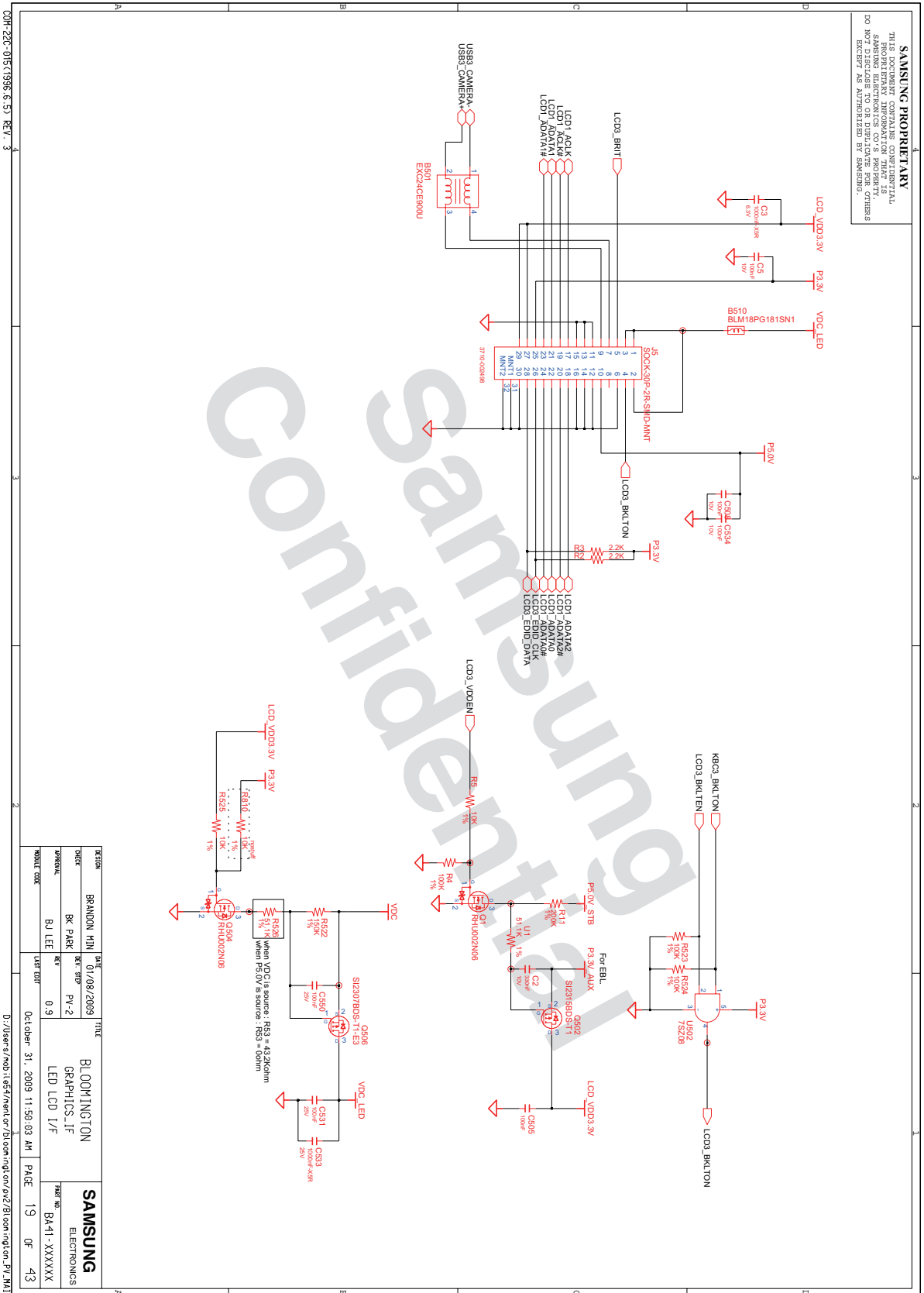
- 이 문서는 삼성전자의 기술 자산으로 승인자만이 사용할 수 있습니다 -
 - This Document can not be used without Samsung's authorization -

8. Block Diagram and Schematic

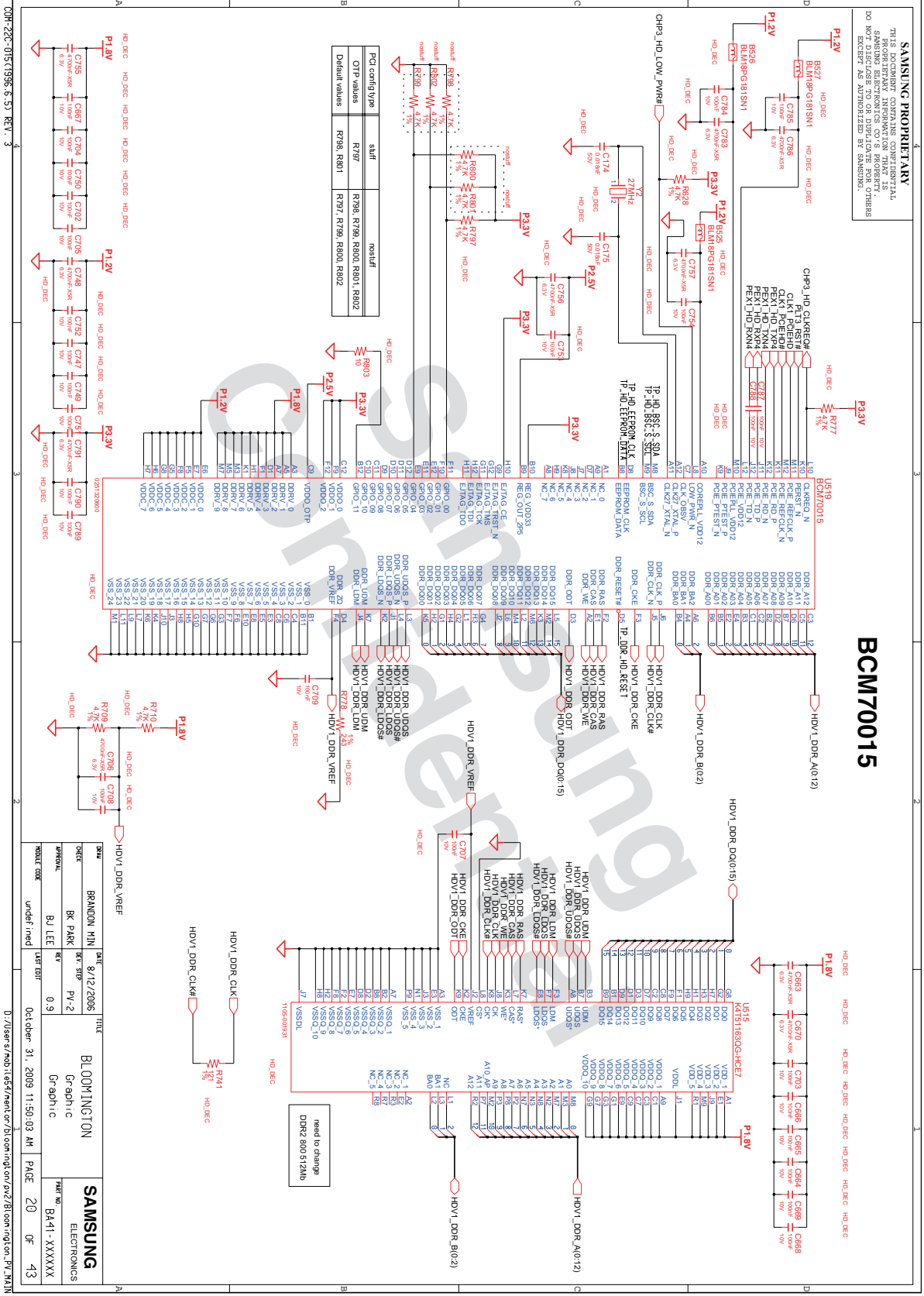


- 이 문서는 삼성전자의 기술 자산으로 승인자만이 사용할 수 있습니다 -
- This Document can not be used without Samsung's authorization -

8. Block Diagram and Schematic

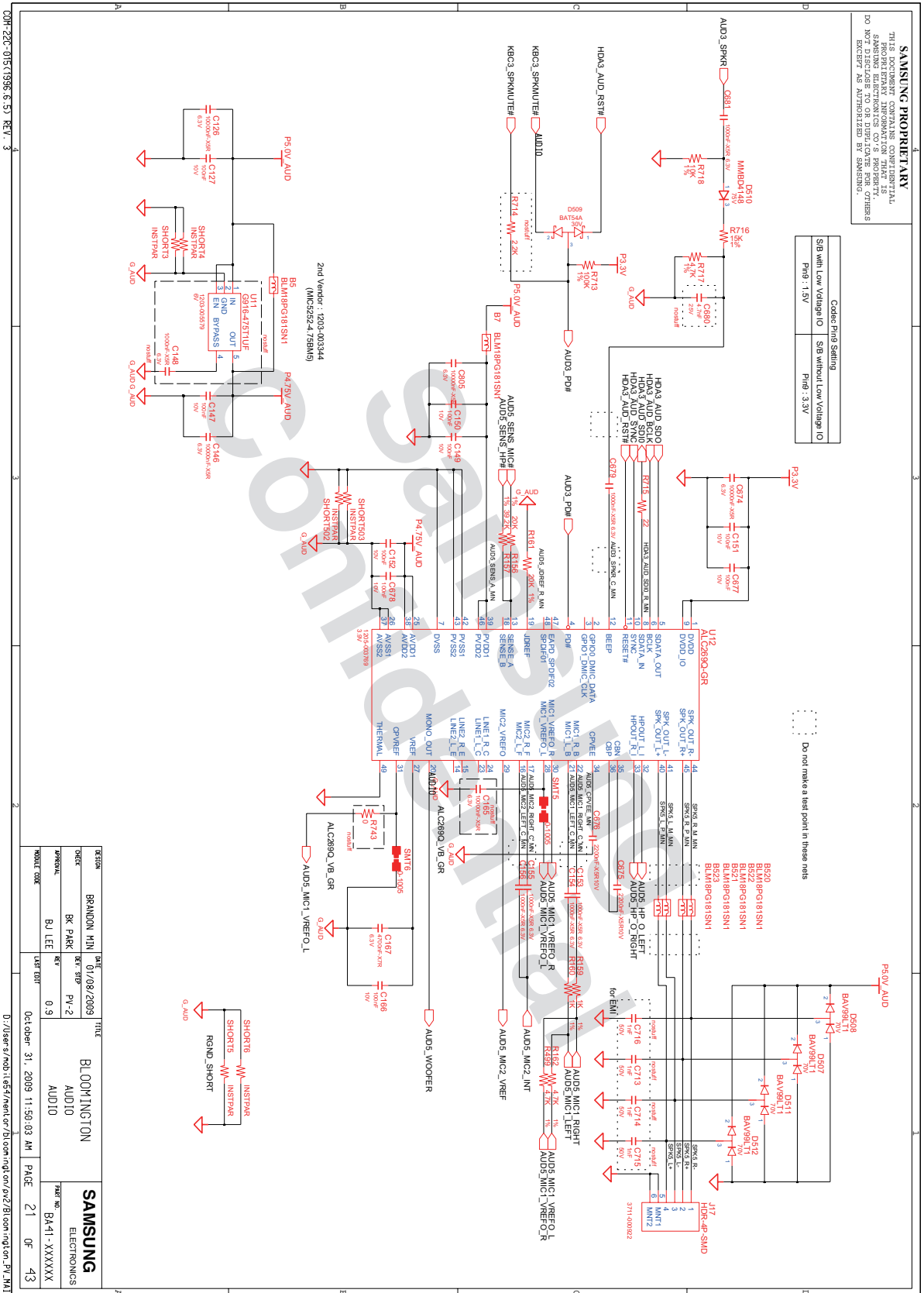


8. Block Diagram and Schematic

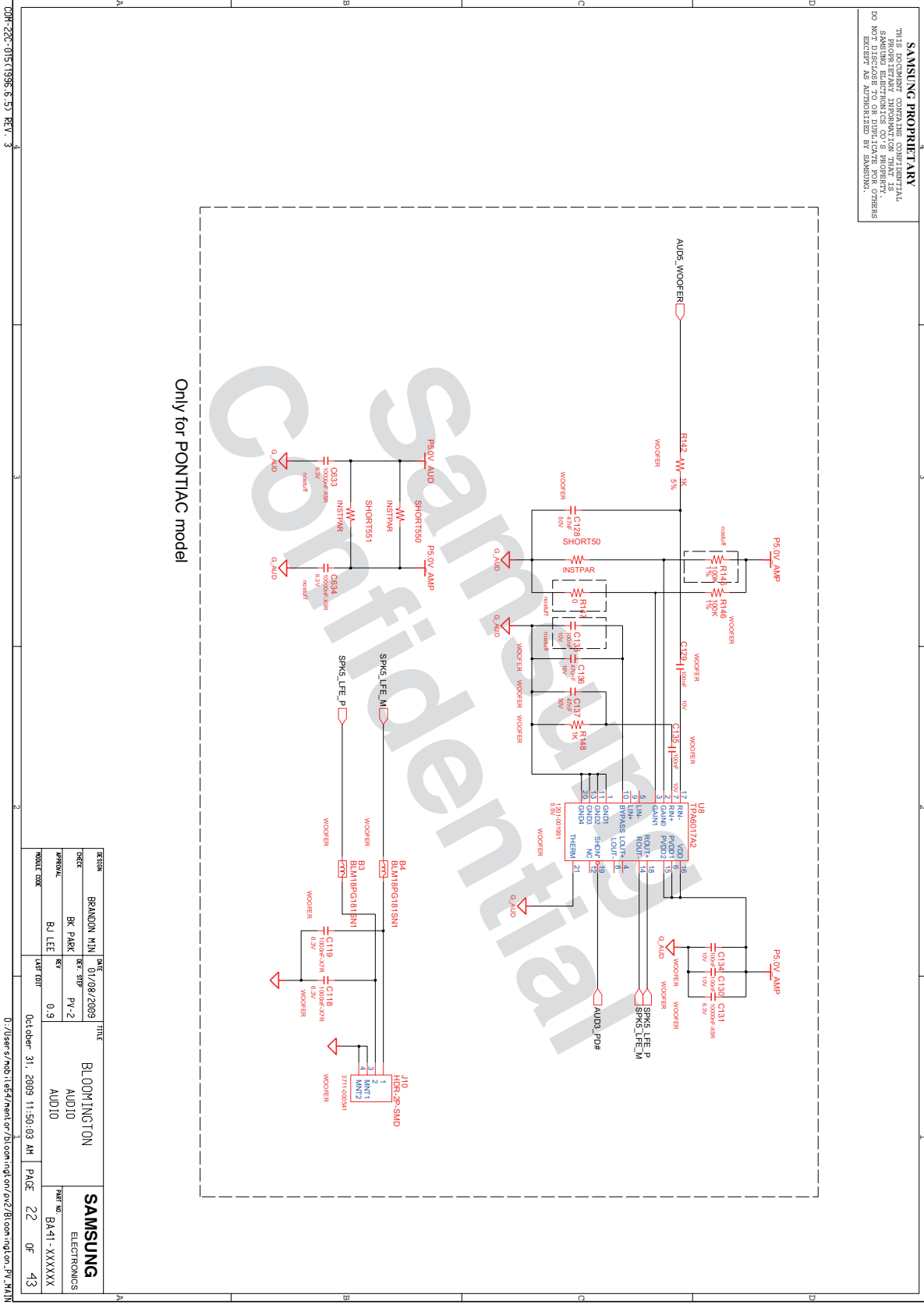


- 이 문서는 삼성전자의 기술 자산으로 승인자만이 사용할 수 있습니다 -
 - This Document can not be used without Samsung's authorization -

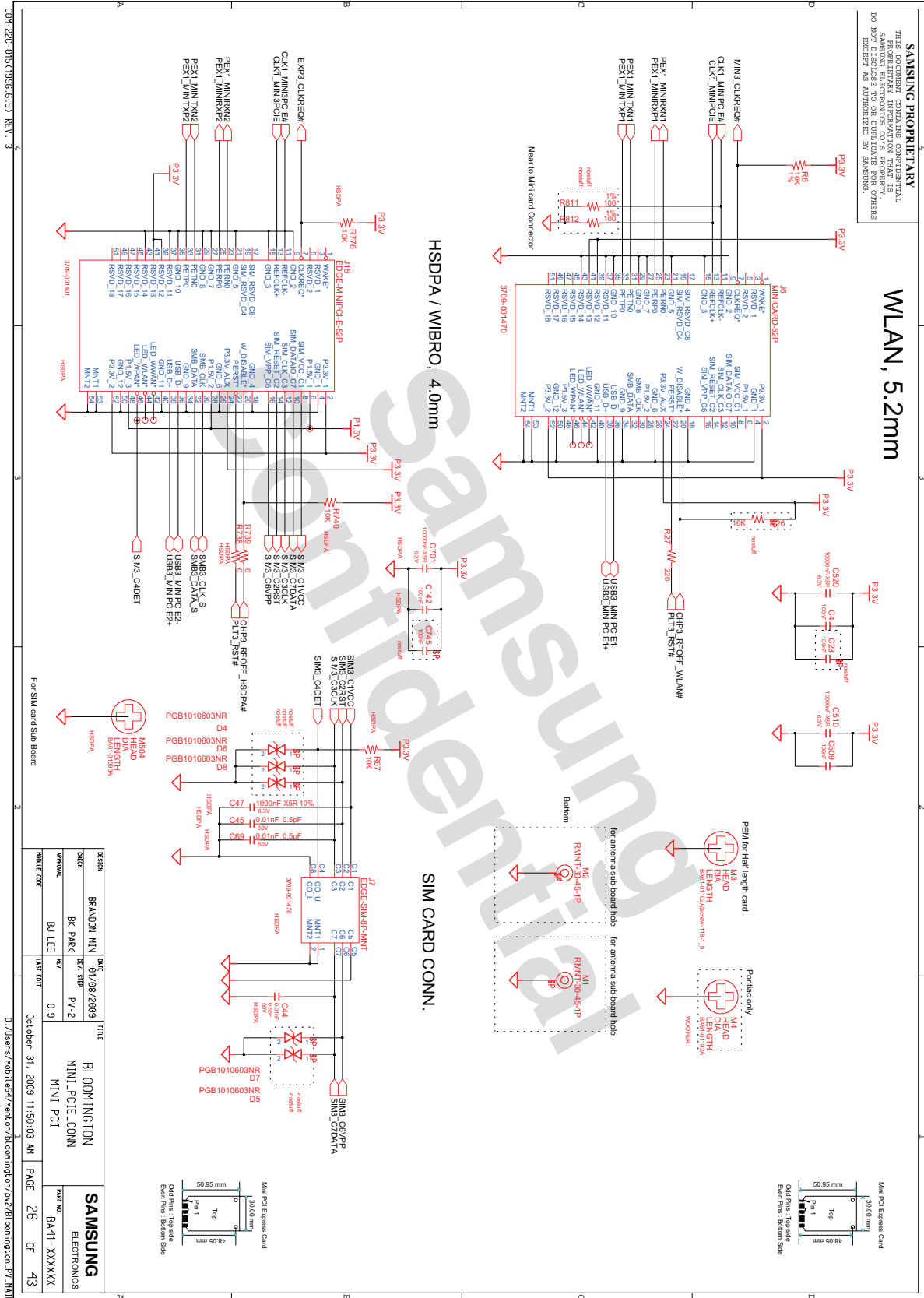
8. Block Diagram and Schematic



8. Block Diagram and Schematic

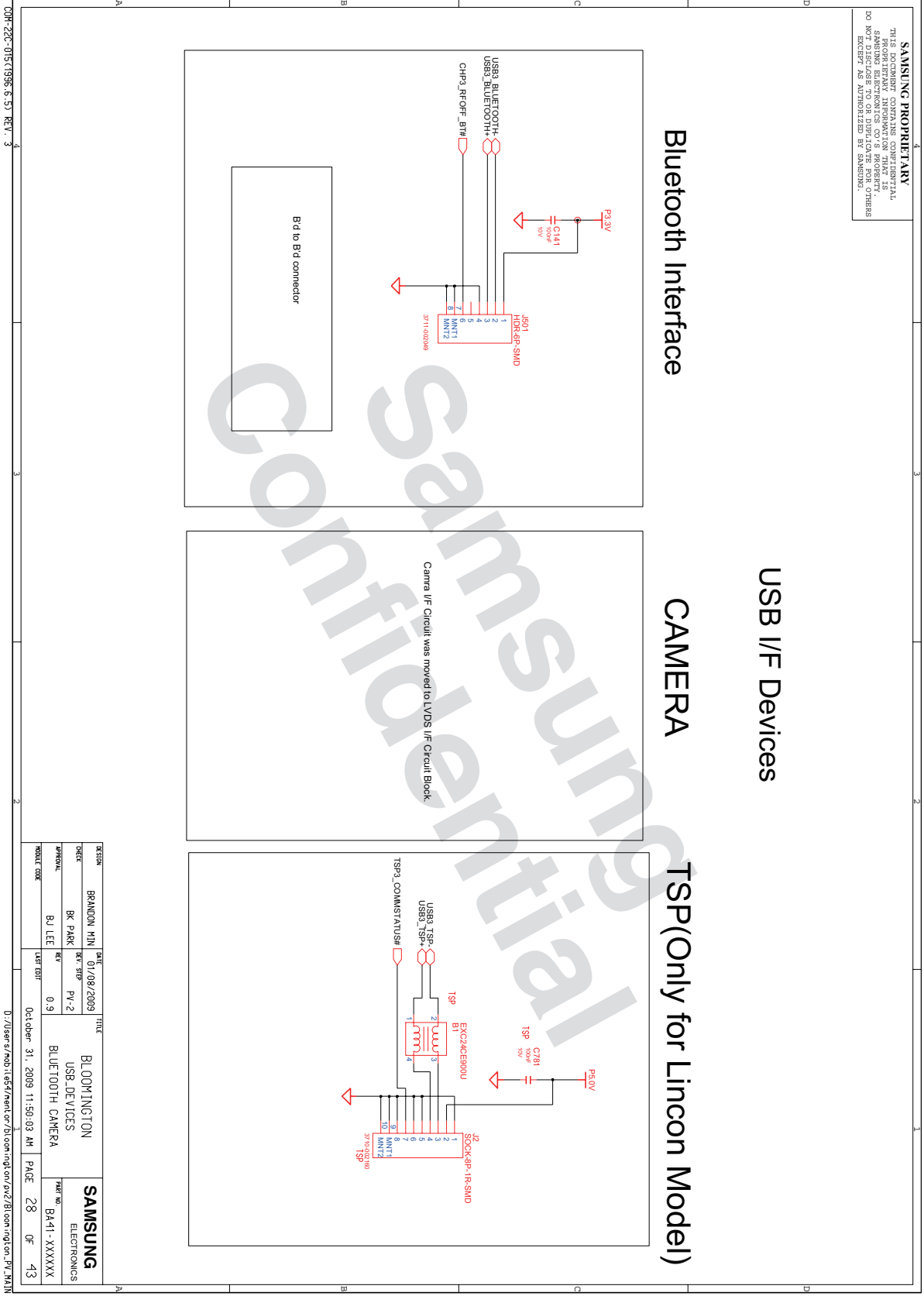


8. Block Diagram and Schematic

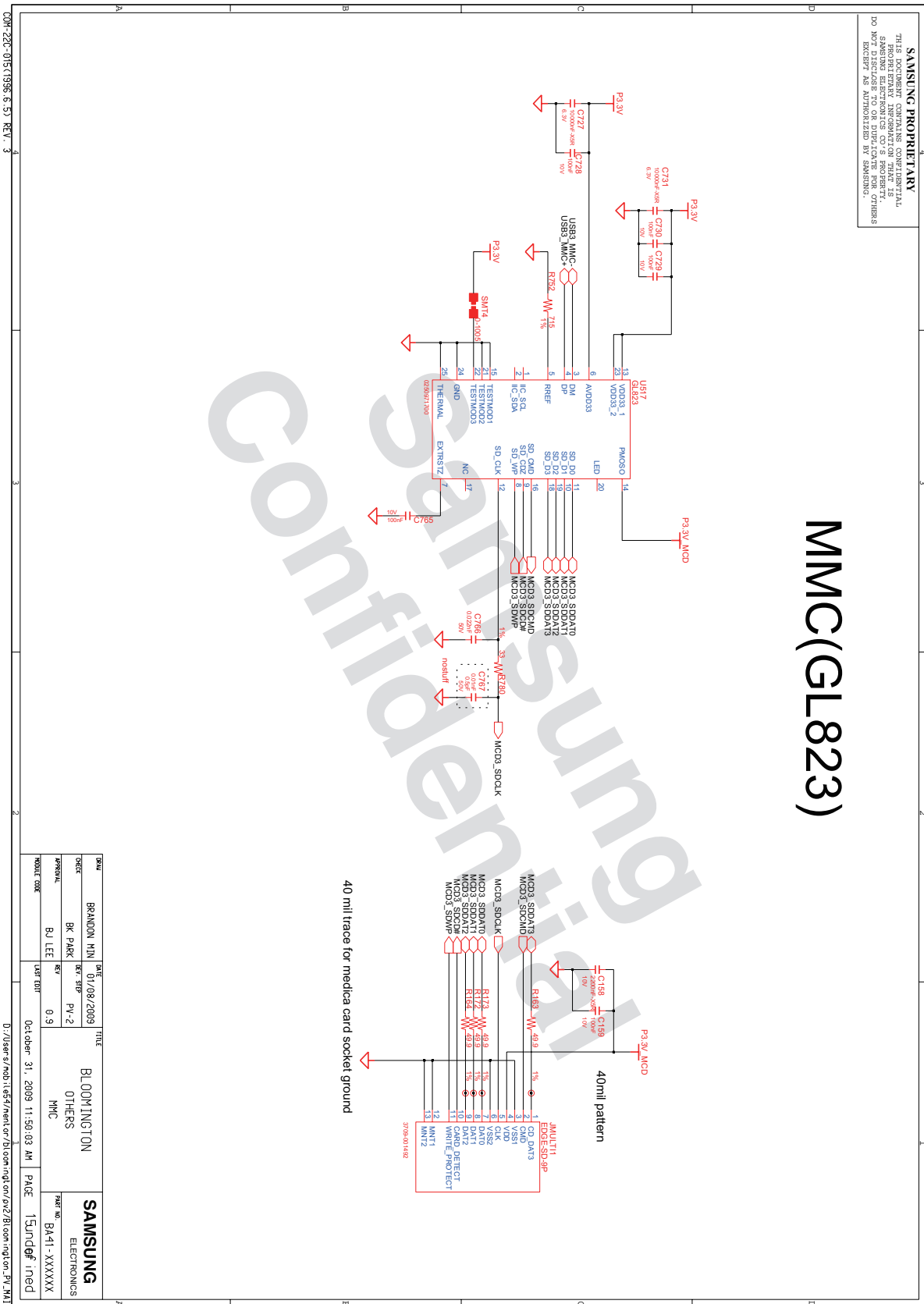


- 이 문서는 삼성전자의 기술 자산으로 승인자만이 사용할 수 있습니다 -
- This Document can not be used without Samsung's authorization -

8. Block Diagram and Schematic

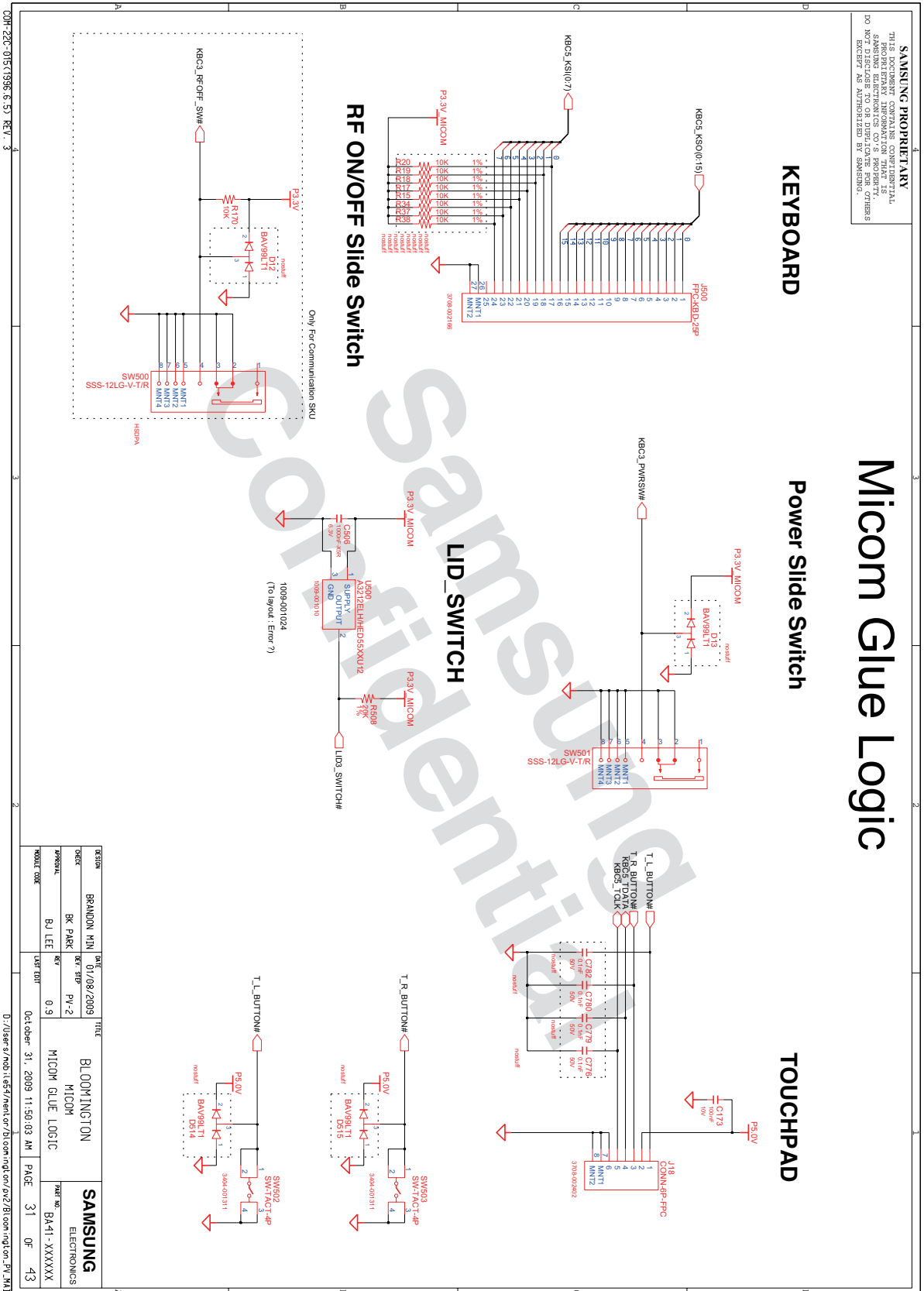


8. Block Diagram and Schematic

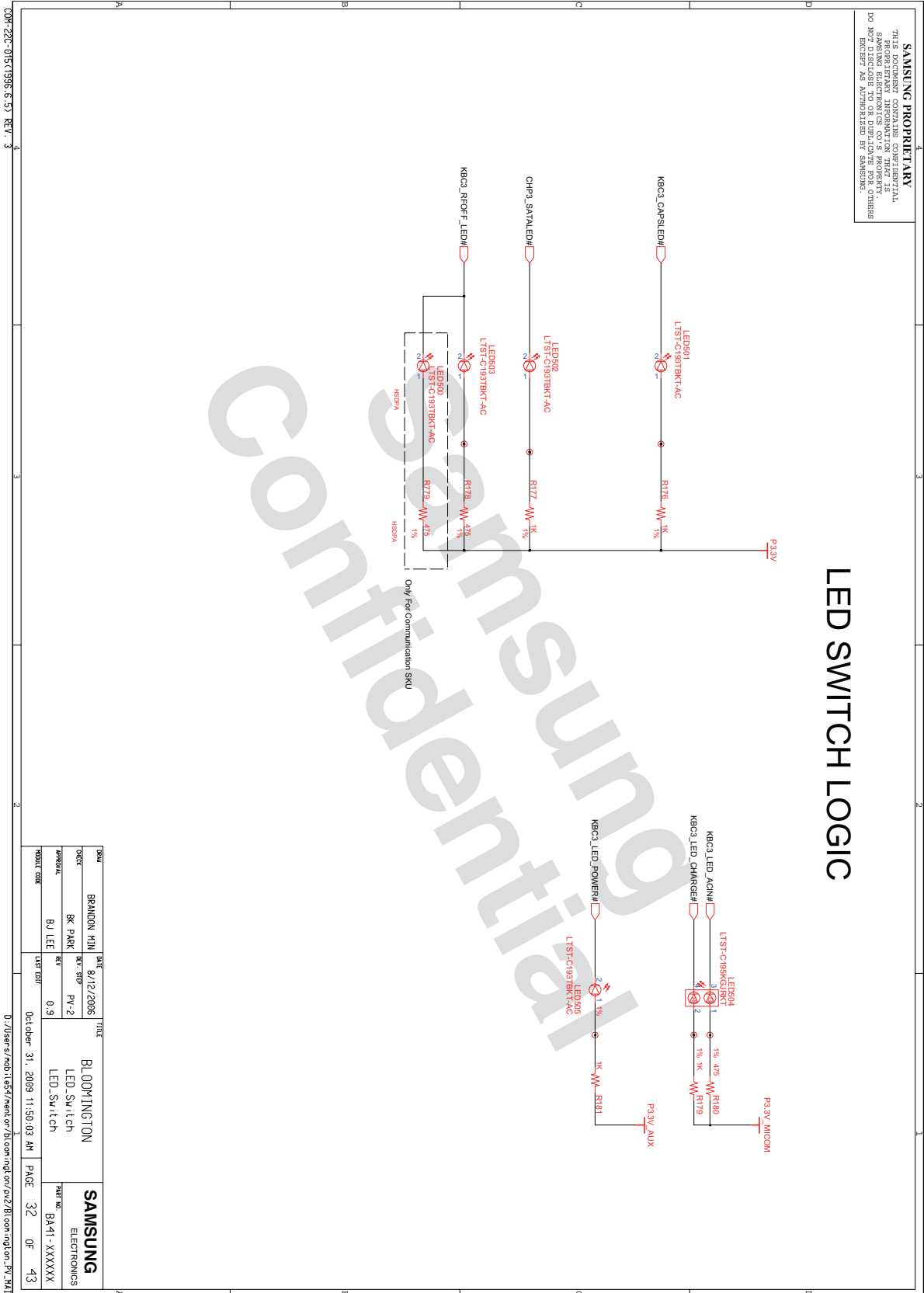


- 이 문서는 삼성전자의 기술 자산으로 승인자만이 사용할 수 있습니다 -
- This Document can not be used without Samsung's authorization -

8. Block Diagram and Schematic

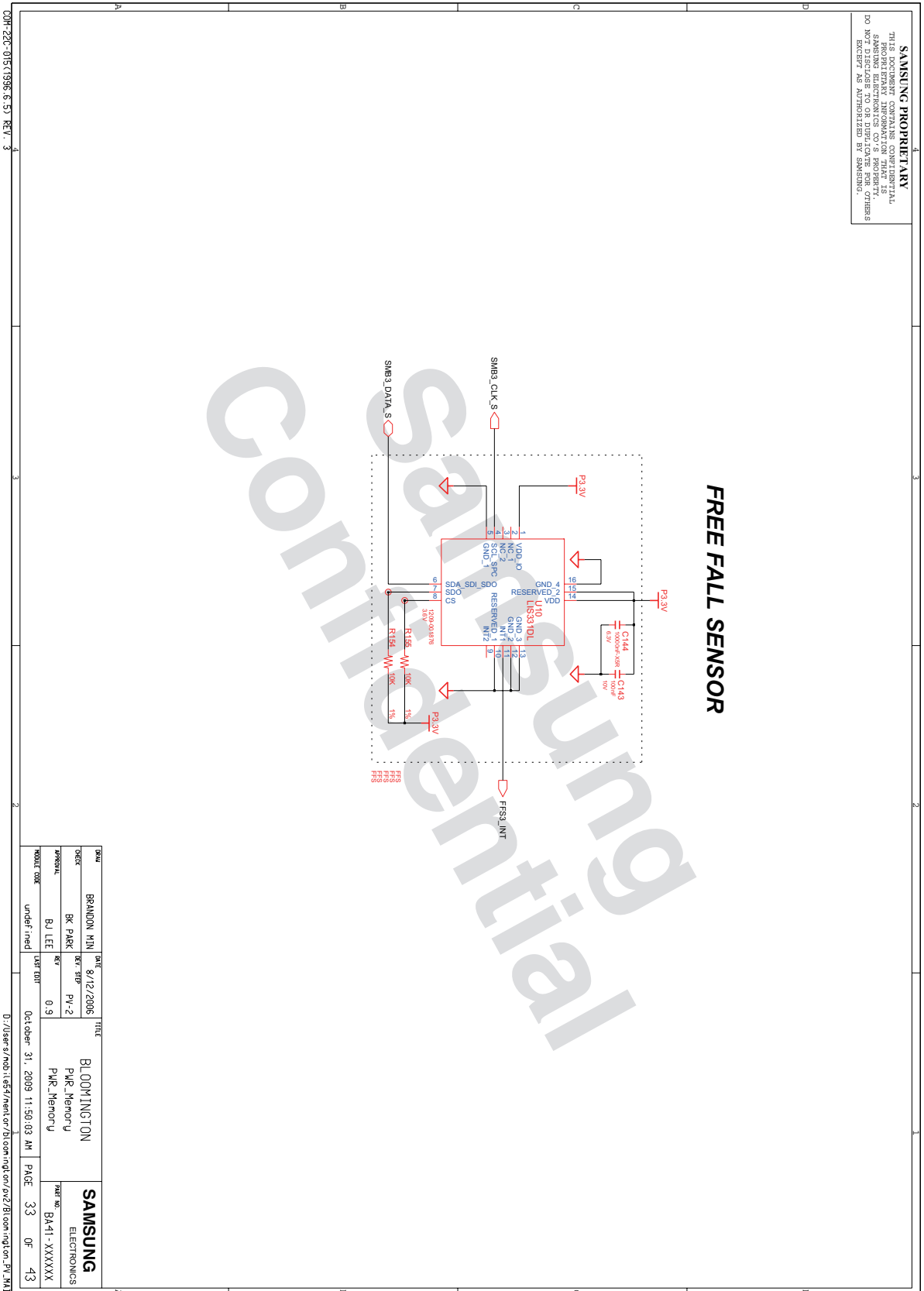


8. Block Diagram and Schematic

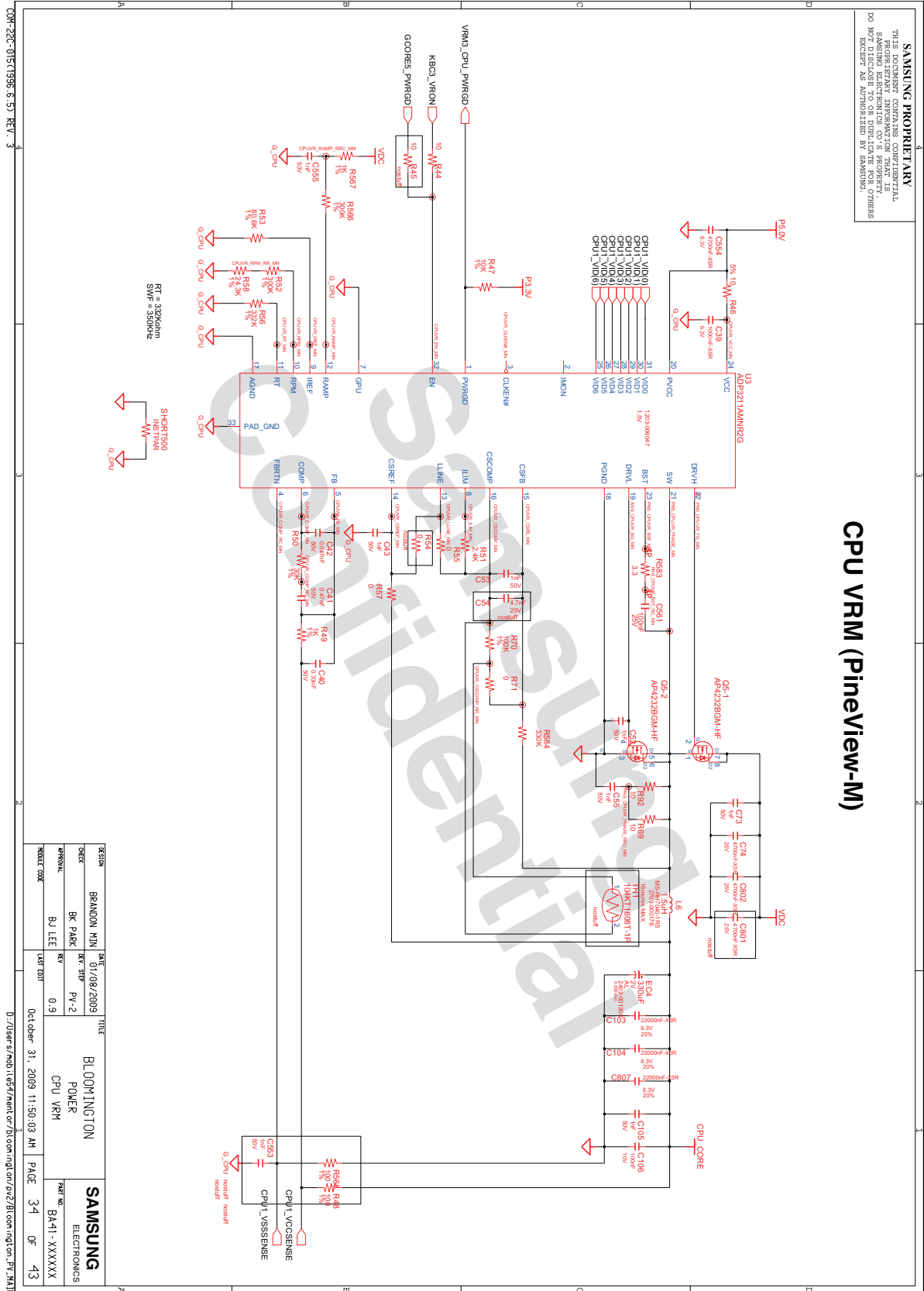


- 이 문서는 삼성전자의 기술 자산으로 승인자만이 사용할 수 있습니다 -
- This Document can not be used without Samsung's authorization -

8. Block Diagram and Schematic

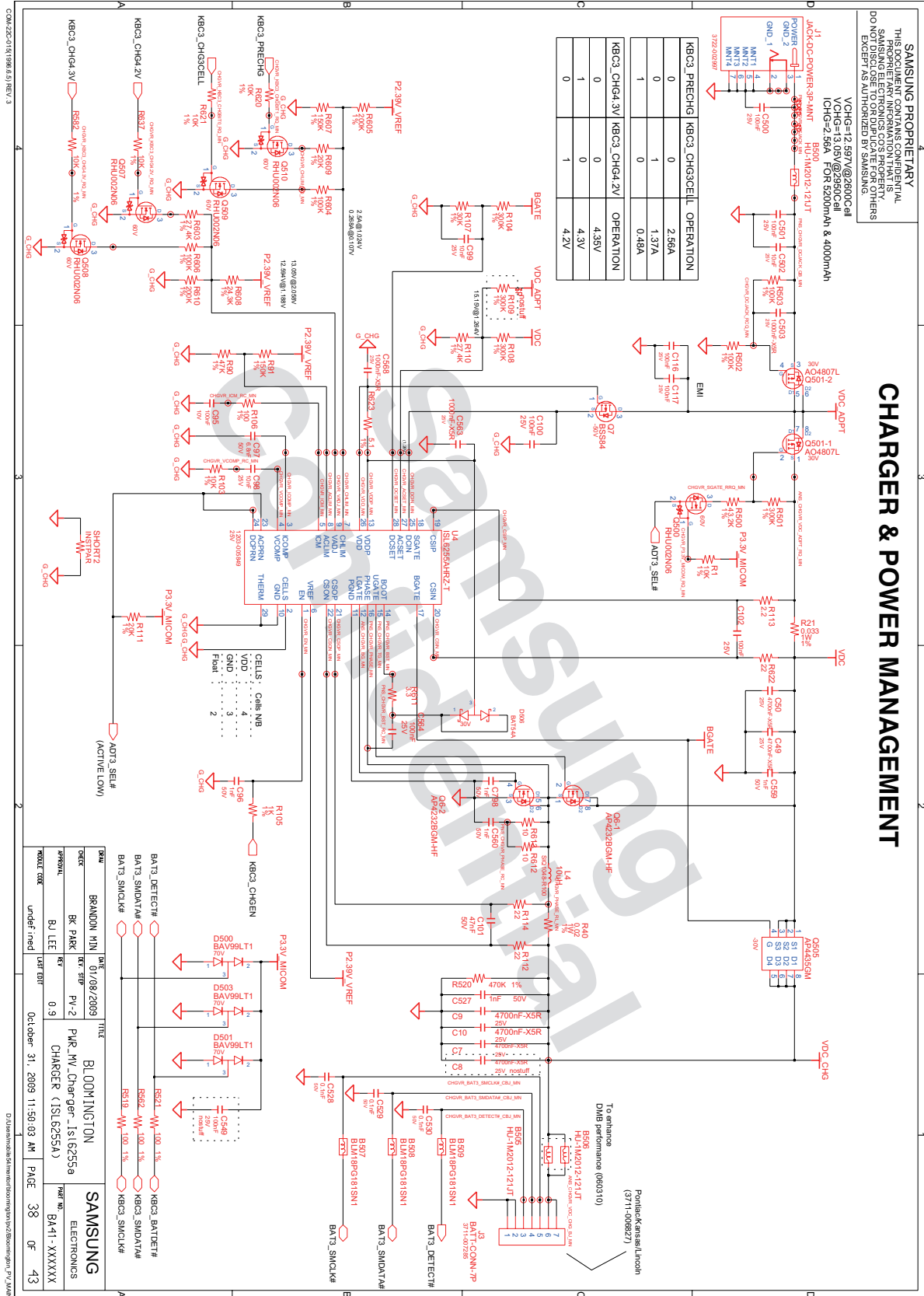


8. Block Diagram and Schematic

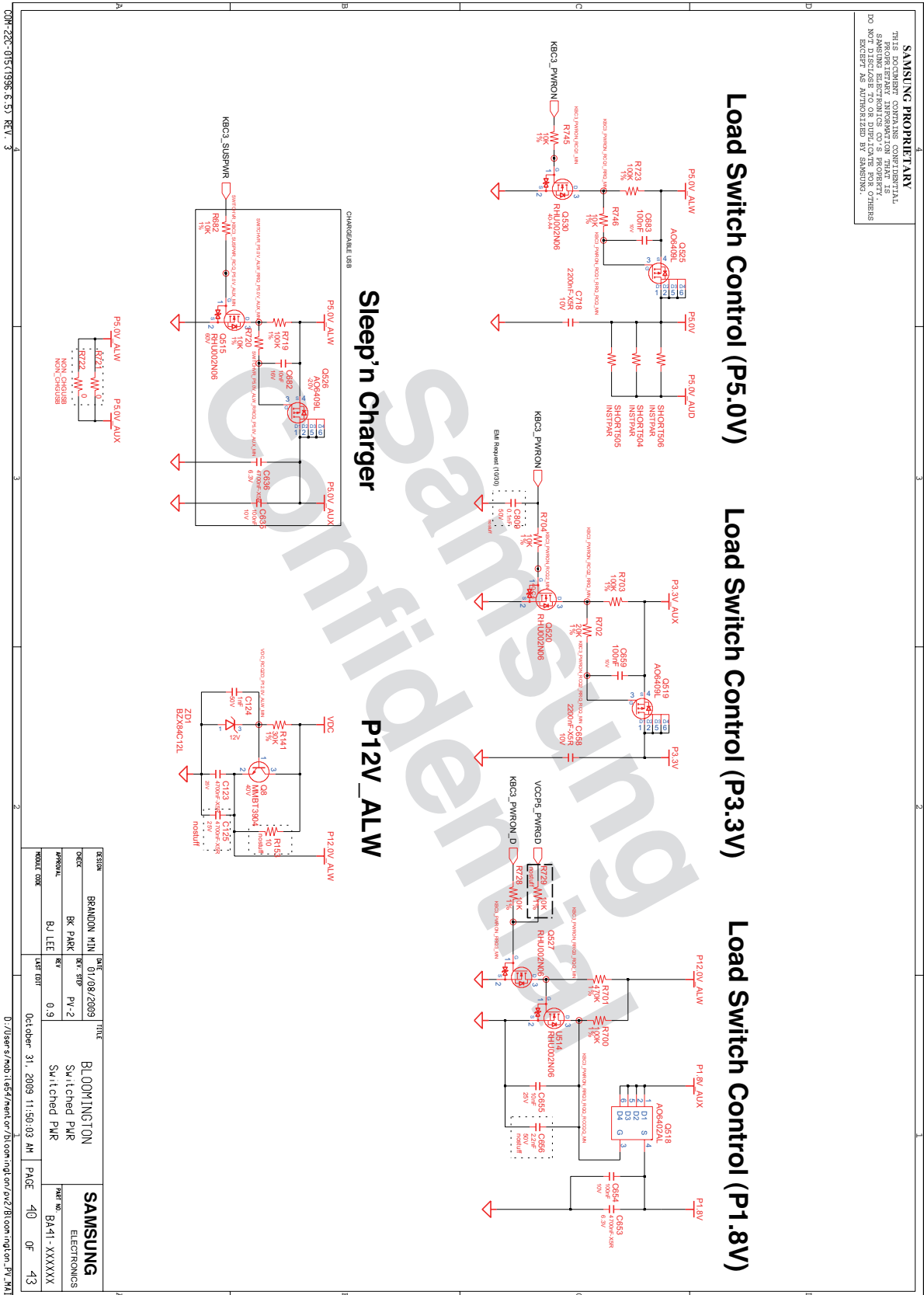


- 이 문서는 삼성전자의 기술 자산으로 승인자만이 사용할 수 있습니다 -
 - This Document can not be used without Samsung's authorization -

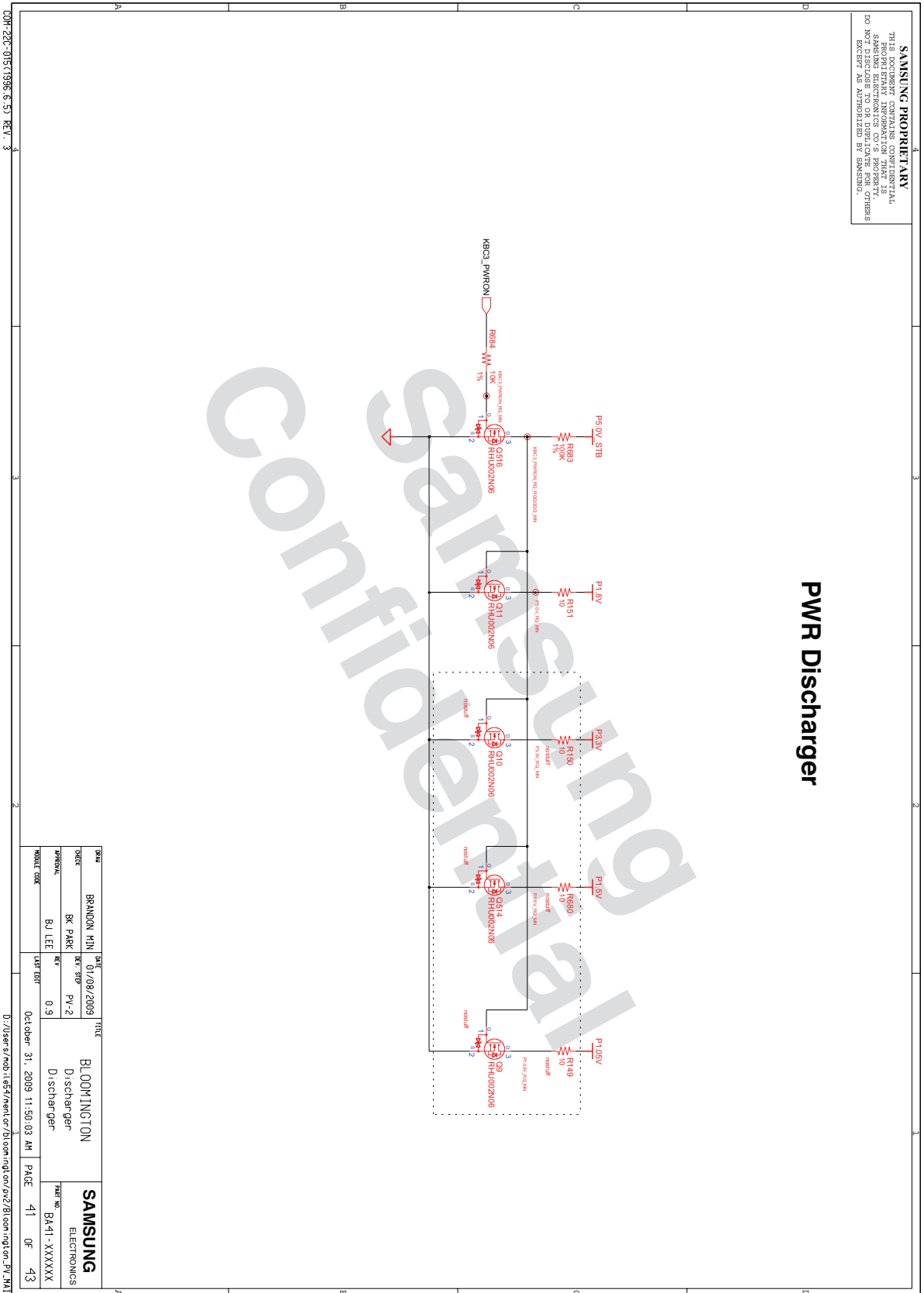
8. Block Diagram and Schematic



8. Block Diagram and Schematic



8. Block Diagram and Schematic



8. Block Diagram and Schematic

SAMSUNG PROPRIETARY

THIS DOCUMENT CONTAINS CONFIDENTIAL AND PROPRIETARY INFORMATION THAT IS NOT TO BE RELEASED TO OR USED BY OTHERS EXCEPT AS AUTHORIZED BY SAMSUNG.

DESIGN	BRANDON MIN	DATE	3/2/2009	TITLE	BLOOMINGTON		
DCDC	BK PARK	REV	31P	PV-2	TP		
APPROVAL	BJ LEE	REV	0.9		TTP FREE		
MODEL CODE		LAST EDIT		Oct 08 11:50:03 AM		PAGE	42 OF 43

SAMSUNG
ELECTRONICS

REV NO: BA-41-XXXXXX

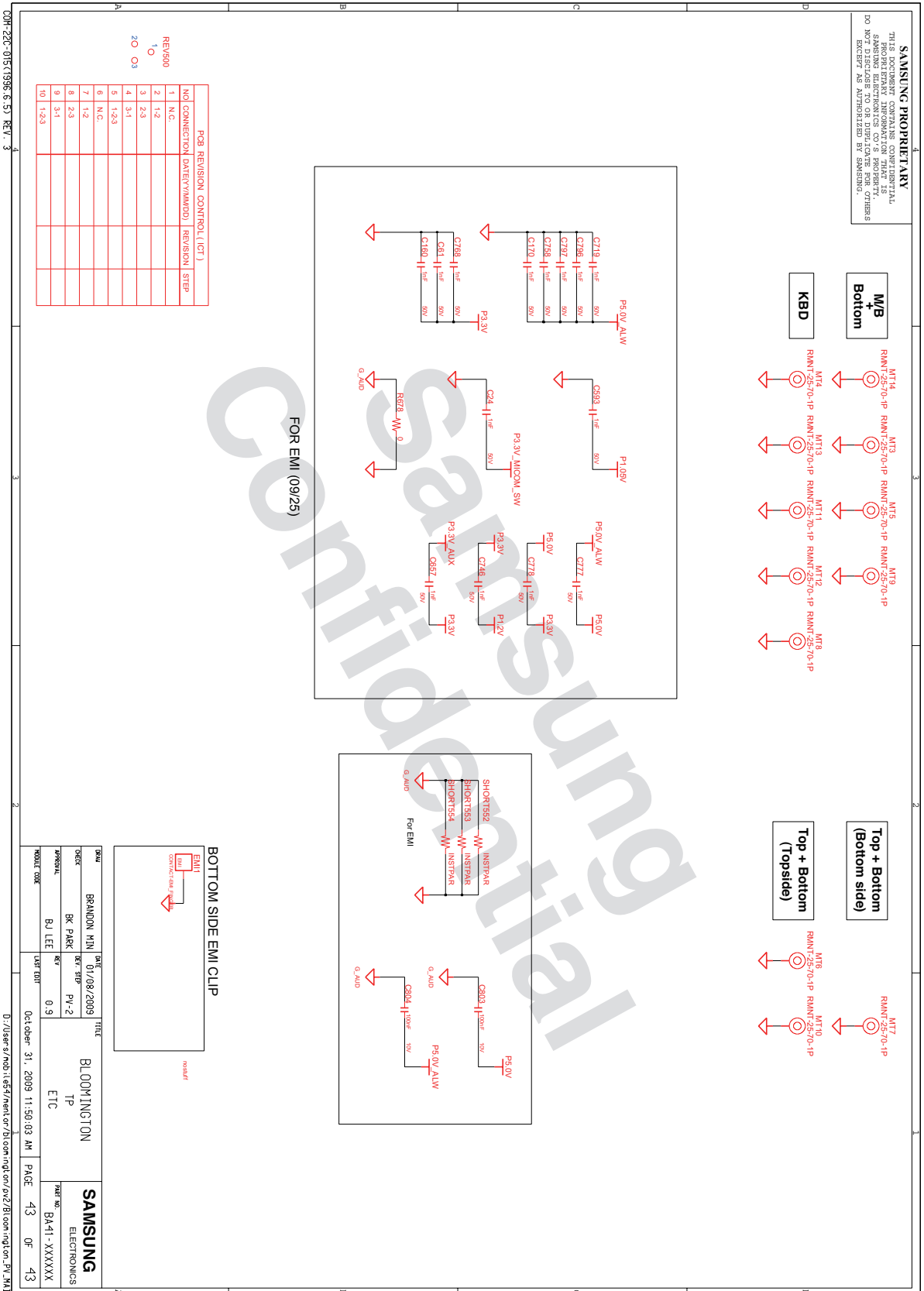
Confidential

COM-22C-015(1998.6.5) REV. 3

D:\Users\moo11857\ndoc\Bloomington\pv MAIN

- 이 문서는 삼성전자의 기술 자산으로 승인자만이 사용할 수 있습니다 -
 - This Document can not be used without Samsung's authorization -

8. Block Diagram and Schematic



- 이 문서는 삼성전자의 기술 자산으로 승인자만이 사용할 수 있습니다 -
- This Document can not be used without Samsung's authorization -

8. Block Diagram and Schematic
