

- 이 문서는 삼성전자의 기술 자산으로 승인자만이 사용할 수 있습니다 -  
- This Document can not be used without Samsung's authorization -

## 8. Block Diagram and Schematic

SAMSUNG PROPRIETARY

THIS DOCUMENT CONTAINS CONFIDENTIAL INFORMATION AND IS UNCLASSIFIED BY DATE 07/16/2010. SAMSUNG ELECTRONICS CO.'S PROPERTY. DO NOT DISCLOSE TO OR DUPLICATE FOR OTHERS EXCEPT AS AUTHORIZED BY SAMSUNG.

# PEBBLE

CPU : INTEL DIAMONDVILLE  
Chip Set : INTEL 945GSE  
Remarks :

Model Name : PEBBLE  
PCB Part No : BA41-01066A (GCE)  
BA41-01067A (NY)  
BA41-XXXXXX (HS)  
Dev. Step : PV  
Revision : 0.3  
T.R. Date : 2009.02.12

DRAW	CHECK	APPROVAL

## Table of Contents

Page. 1 ----	COVER
Page. 2~7 ---	INFORMATION
Page. 8 ----	CLOCK GENERATOR (CK-505M)
Page. 9 ----	THERMAL SENSOR
Page. 10~11 -	DIAMONDVILLE (N270)
Page. 12~15	CALISTOGA (INTEL945GSE)
Page. 16~19 -	ICH7-M
Page. 20 ----	BIOS CODE
Page. 21 ----	DDR2 SODIMM
Page. 22 ----	GRAPHIC I/F
Page. 23~26 -	AUDIO
Page. 27 ----	LAN
Page. 28 ----	SATA HDD
Page. 29 ----	MINI-CARD (Wireless/HSDPA
Page. 30~31 -	USB
Page. 32 ----	MMC
Page. 33~34 -	MICOM & GLUE LOGIC
Page. 35 ----	LED-Switch
Page. 36~42 -	POWER
Page. 43 ----	SUB-BOARD (SIM CARD)
Page. 44 ----	MOUNT HOLE
Page. 45 ----	Test Points

REVISION	VZ KJM	DATE	01/01/2008	TITLE	PEBBLE COVER	PAGE NO	BA41-0106XA
DRAWN	VZ KJM	DEV. STEP	PV		COVER		
APPROVAL	BULEE KEY	REV	0.3				
TRAIL CODE	LST EDIT						

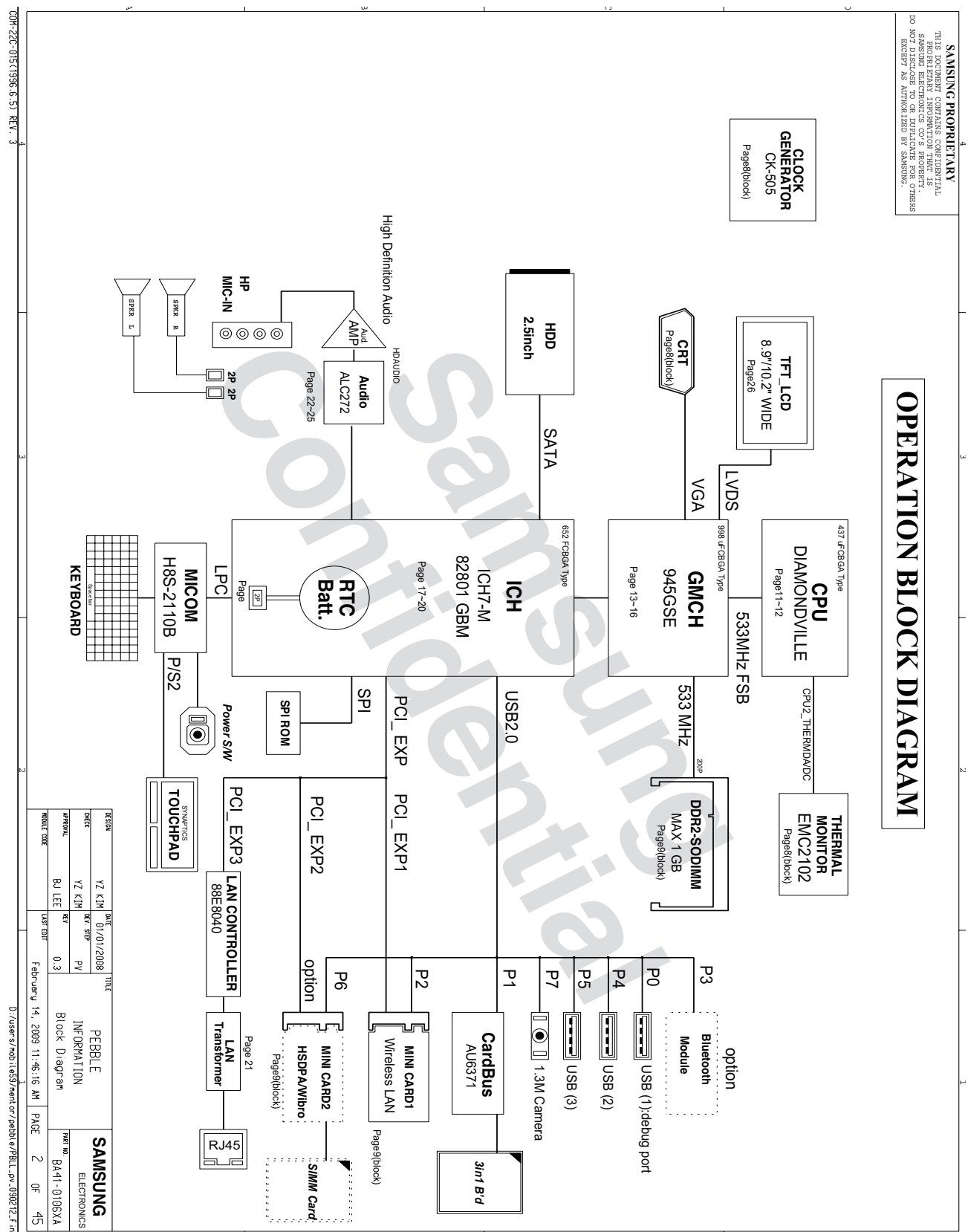
February 14, 2009 11:46:16 AM

PAGE 1 OF 45

D:/User's/mob t/e&t/print or /addn e/PBL.prj\_098272.f.m

- 이 문서는 삼성전자의 기술 자산으로 승인자만이 사용할 수 있습니다 -
- This Document can not be used without Samsung's authorization -

## 8. Block Diagram and Schematic



- 이 문서는 삼성전자의 기술 자산으로 승인자만이 사용할 수 있습니다 -
- This Document can not be used without Samsung's authorization -

## 8. Block Diagram and Schematic

SAMSUNG PROPRIETARY  
THIS DOCUMENT CONTAINS CONFIDENTIAL  
SAMSUNG ELECTRONICS CO.'S PROPERTY.  
NO REPRODUCTION OR DISSEMINATION OF THIS  
DOCUMENT OR ITS CONTENTS  
EXCEPT AS AUTHORIZED BY SAMSUNG.

BOARD INFORMATION

SCHEMATIC ANNOTATIONS AND BOARD INFORMATION

PCI Devices	IDSEL#	REQ.GNT#	Interrupts
Devices			
USB HUB to PCI AD28(internal) AD30(internal) LPC Bridge/IE/AC97/SMBUS Internal MAC	AD28(internal) AD30(internal) AD31(internal) AD28(internal)		Programmable

PC / SMB Address	Address	Hex	Bus
Devices			
ICH7M	Master	1101 001X	SMBUS Master
CK505M (Clock Generator)	Slave	1010 000X	Clock Unused Clock Output Disable
SPBIO2M	Slave	1011 000X	
CPU Thermal Sensor	0111 101X	7Ah	Thermal Sensor

USB PORT Assign	Port Number	ASSIGNED TO	Port Number	ASSIGNED TO
UHC_0_0	0	USB PORT	UHC_1_2	4
UHC_0_1	1	3.5" USB	UHC_1_3	6
UHC_1_3	2	WIRELESS LAN	UHC_1_7	7
		BLUETOOTH		CAMERA

PCI Express Assign	Port Number	ASSIGNED TO
	1	Mini Card 1 (Wireless LAN)
	2	Mini Card 2 (HSDPA/WiBro)
	3	LOM

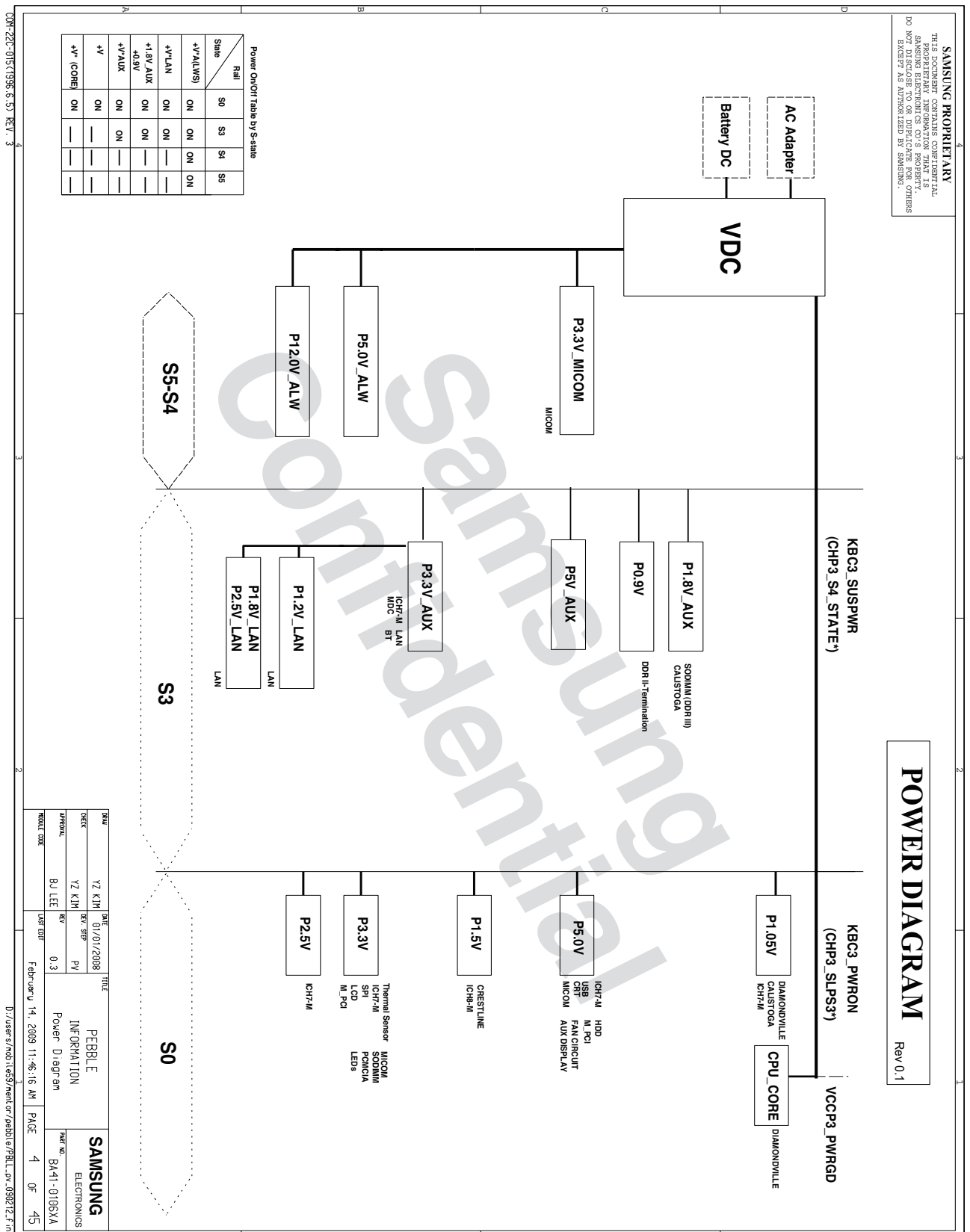
Voltage Rails	Descriptions
Power Rail	
WRTC_BAT	3.3V (can drop to 2.0V min. in S3 state) supply for the WRTC well.
VDC	Primary DC system power supply (9 to 19V)
P1_0B_VDDCP	VTT for CPU, Cache & ICH7M
P3_3V_MICOM	3.3V always power rail (for Microm)
P3_3V_MICOM	3.3V power rail (off in S4-S5)
P1_0B_AUX	1.8V power rail for DDR (off in S4-S5)
P0_0V	0.9V power rail (for DDR (off in S4-S5))
P3_3V_AUX	3.3V power rail (off in S4-S5)
P3_3V_AUX	3.3V power rail (off in S4-S5)
P3_3V_AUX	5.0V switched power rail (off in S3-S5)
P3_3V_AUX	3.3V switched power rail (off in S3-S5)
CPU_CORE	Core voltage for Atom CPU

Doc No.	VZ_KIM	DATE	01/01/2008	TITLE	PEBBLE	SAMSUNG
Ver.	9.0	Rev.	0.3	Model Code	BA41-0105XA	ELECTRONICS
Model Code	BJ LEE	Rev.	0.3	Board Information		
February 14, 2009 11:46:16 AM				PAGE	3	OF 45

D:/user/s/mob/1453/rent/or/cash/ba/PBL.dv\_090212.frm

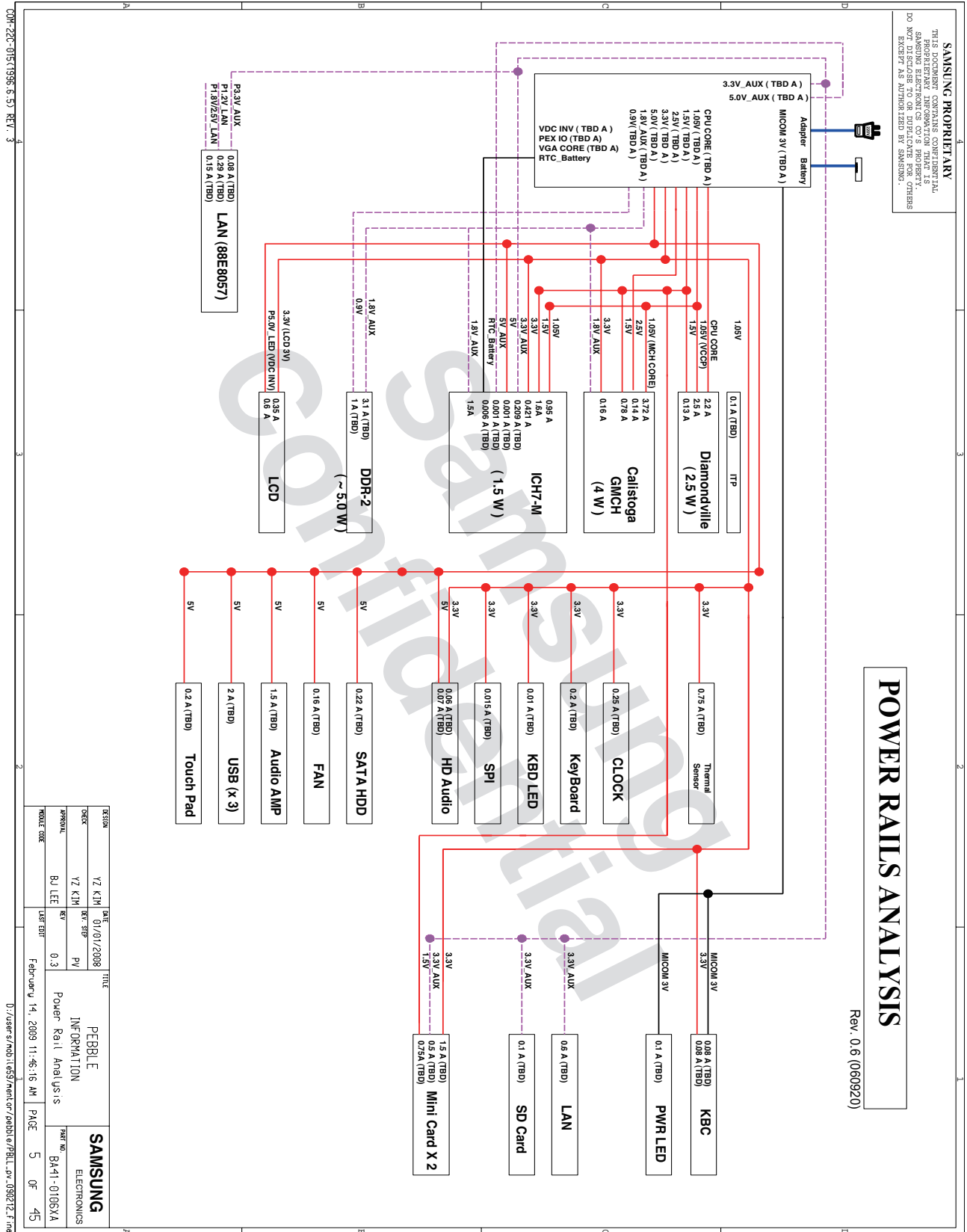
- 이 문서는 삼성전자의 기술 자산으로 승인자만이 사용할 수 있습니다 -  
- This Document can not be used without Samsung's authorization -

## 8. Block Diagram and Schematic



- 이 문서는 삼성전자의 기술 자산으로 승인자만이 사용할 수 있습니다 -
- This Document can not be used without Samsung's authorization -

## 8. Block Diagram and Schematic

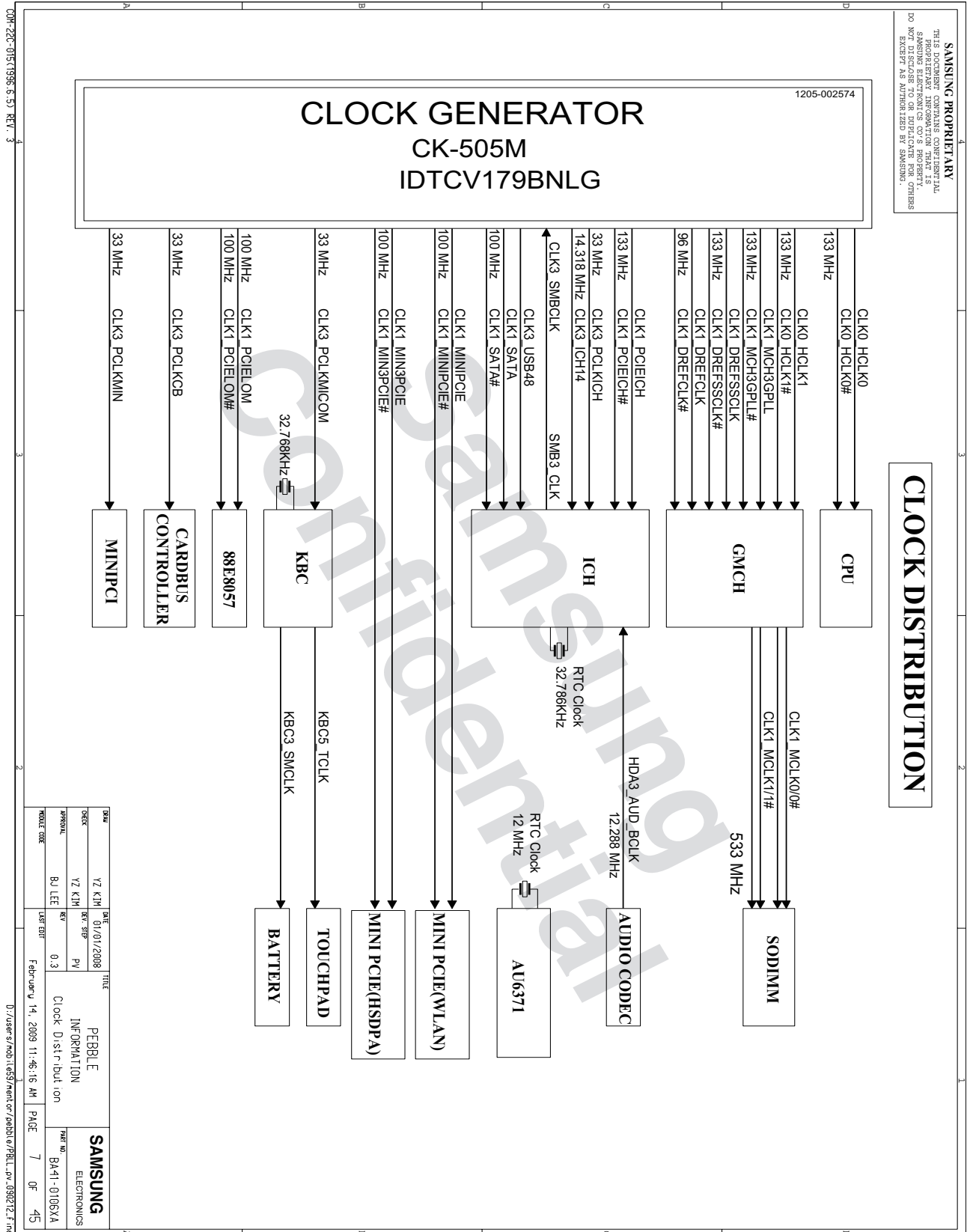


- ## 8. Block Diagram and Schematic

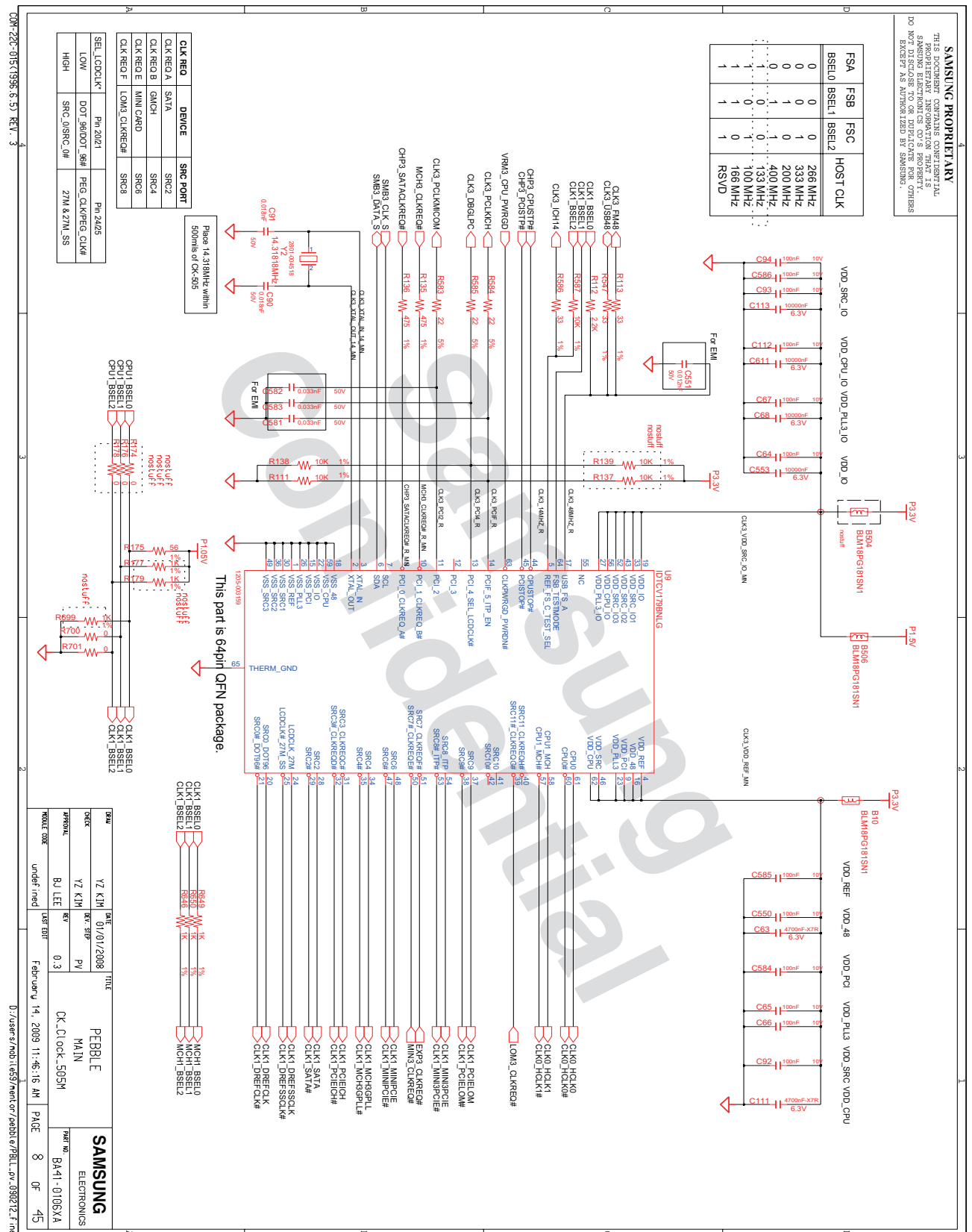


- 이 문서는 삼성전자의 기술 자산으로 승인자만이 사용할 수 있습니다 -
- This Document can not be used without Samsung's authorization -

## 8. Block Diagram and Schematic



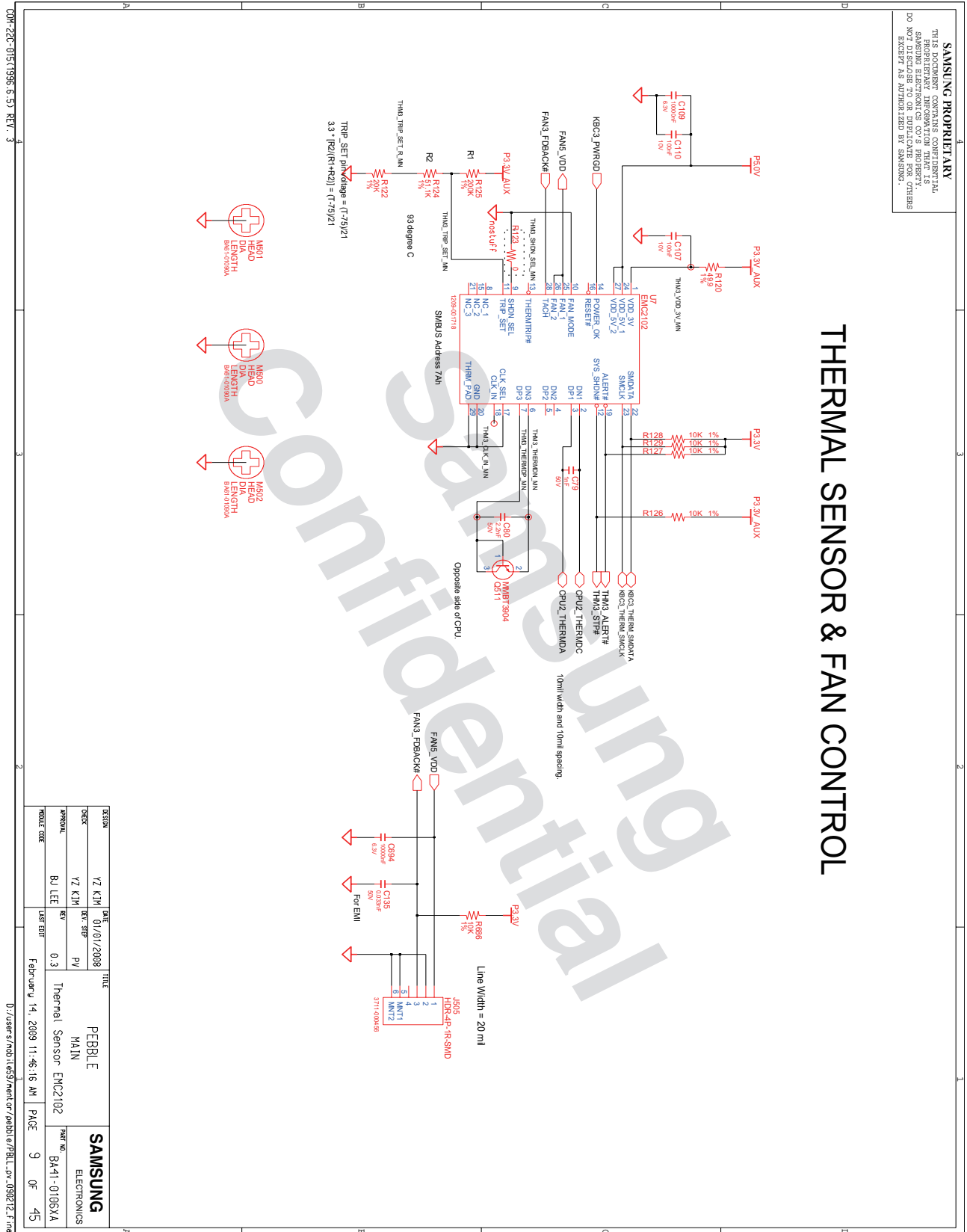
## 8. Block Diagram and Schematic





- 이 문서는 삼성전자의 기술 자산으로 승인자만이 사용할 수 있습니다 -
- This Document can not be used without Samsung's authorization -

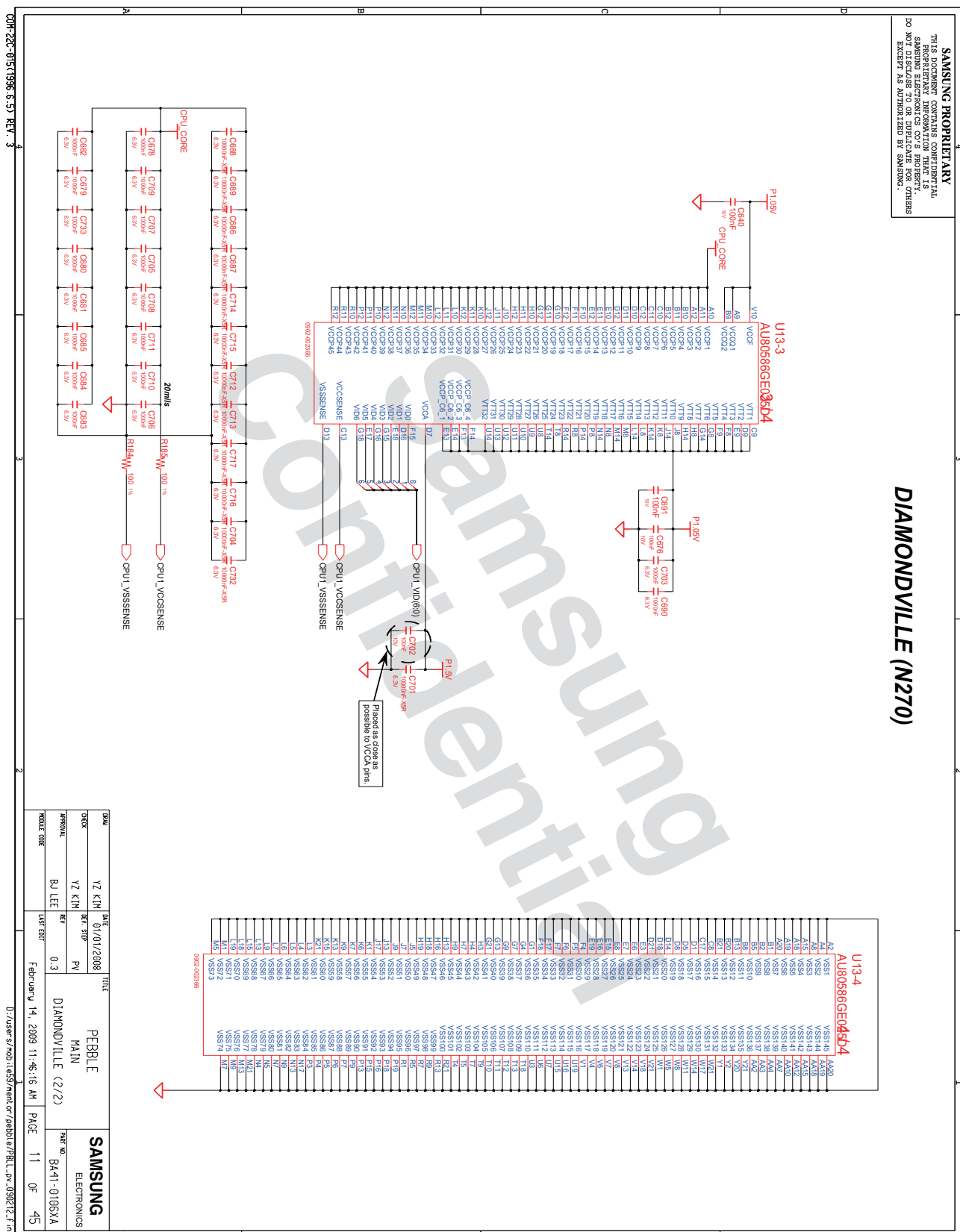
## 8. Block Diagram and Schematic





- 이 문서는 삼성전자의 기술 자산으로 승인자만이 사용할 수 있습니다 -  
- This Document can not be used without Samsung's authorization -

## 8. Block Diagram and Schematic

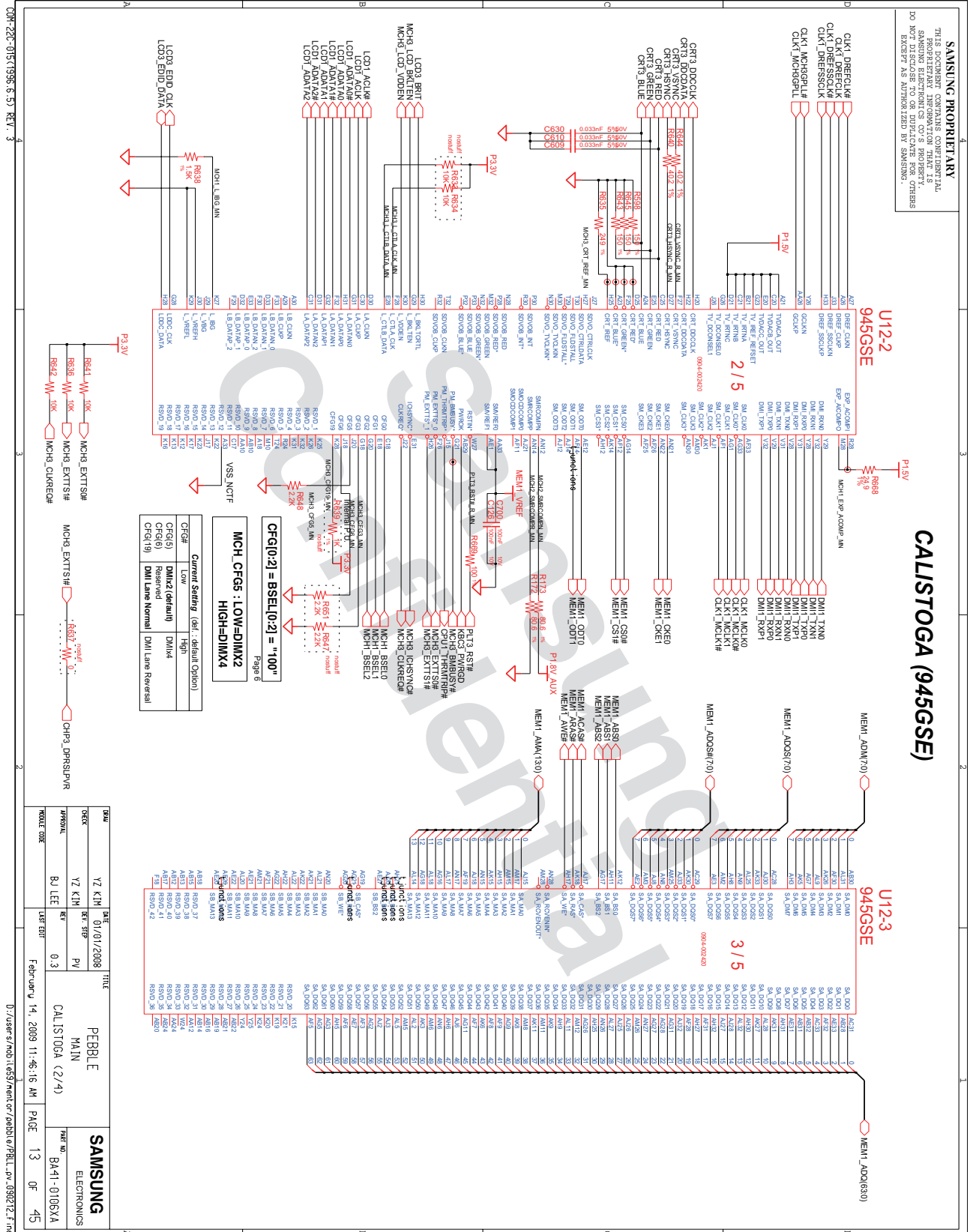


- ## 8. Block Diagram and Schematic

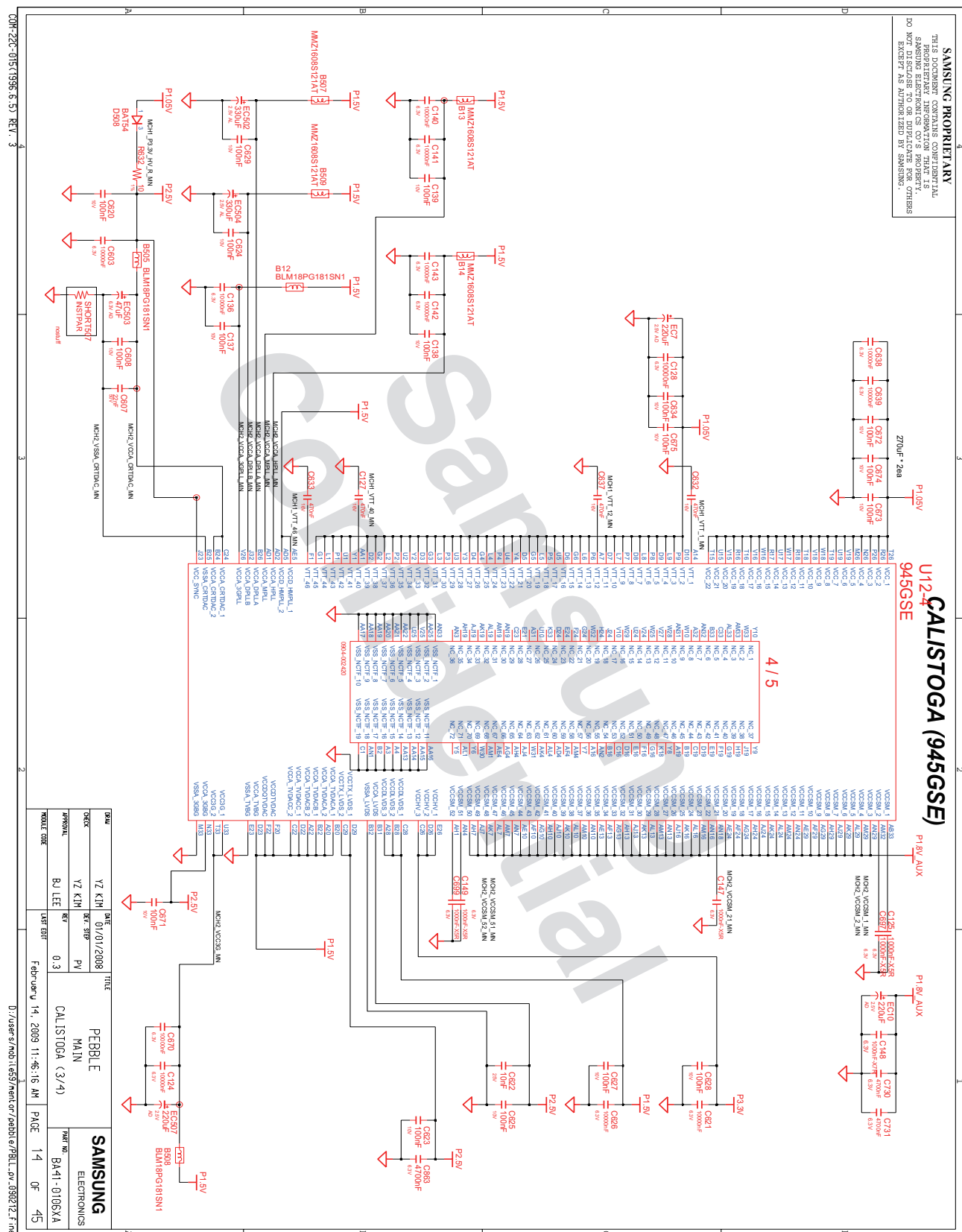


- 이 문서는 삼성전자의 기술 자산으로 승인자만이 사용할 수 있습니다 -
- This Document can not be used without Samsung's authorization -

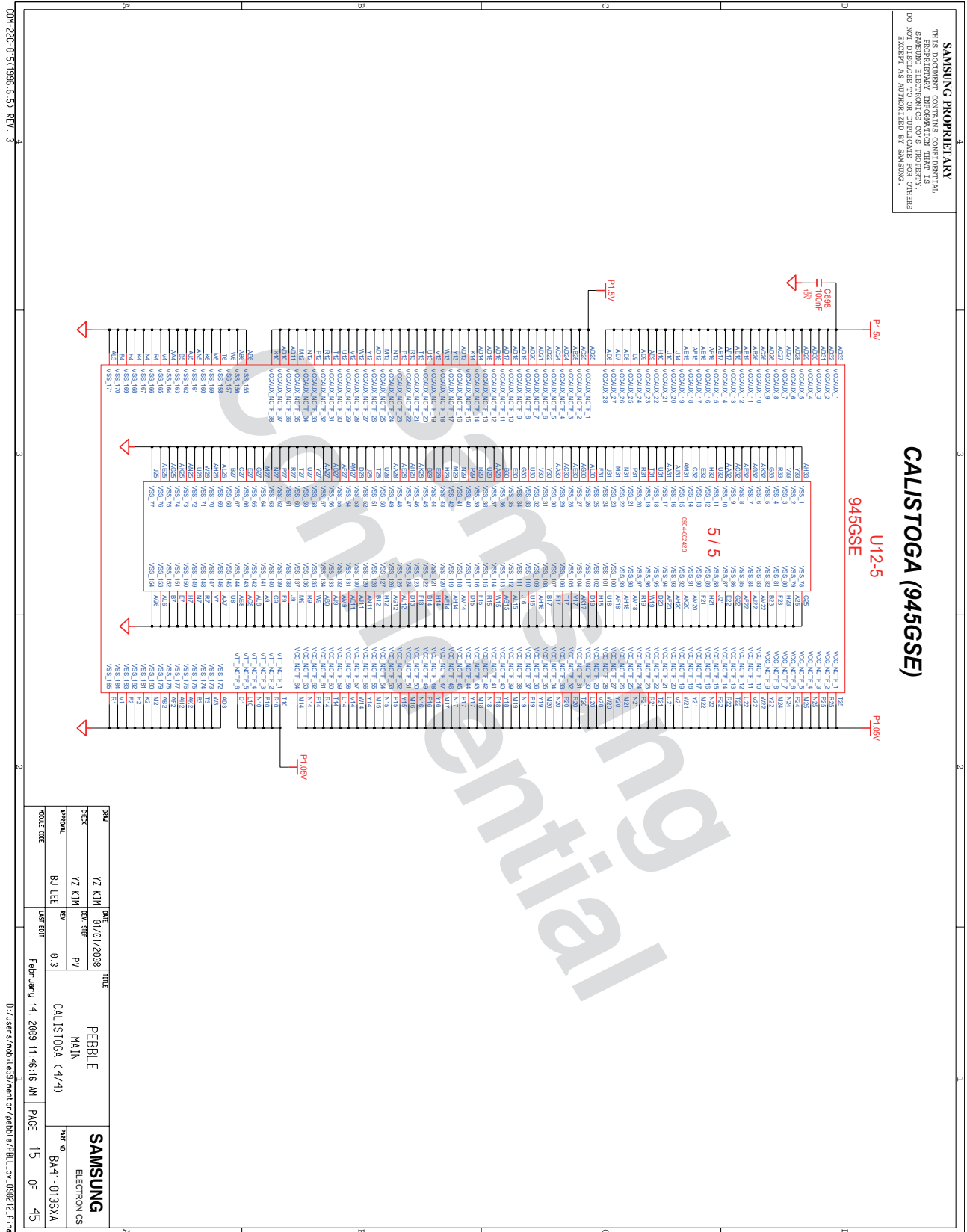
## 8. Block Diagram and Schematic



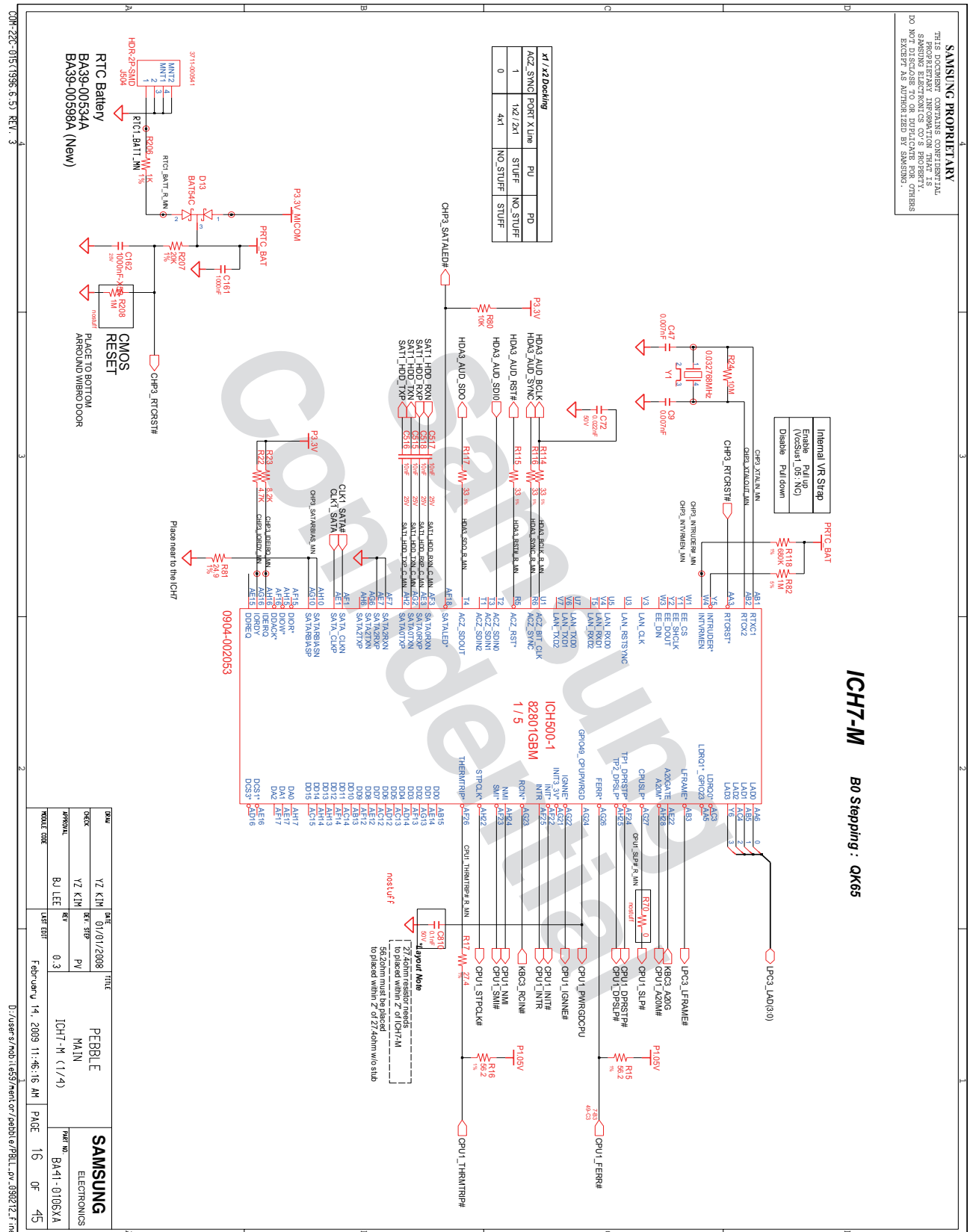
## 8. Block Diagram and Schematic



## 8. Block Diagram and Schematic



## 8. Block Diagram and Schematic







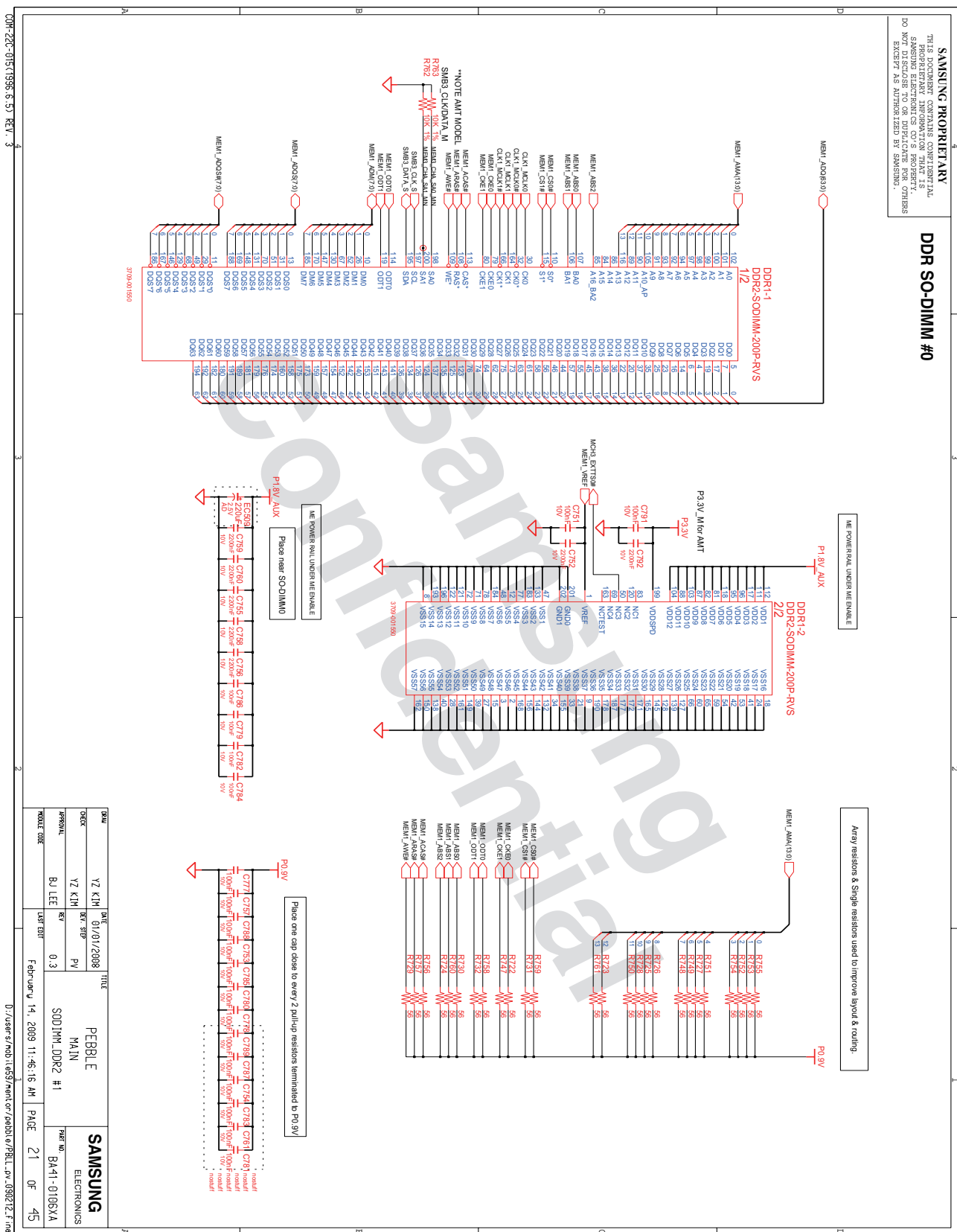




- ## 8. Block Diagram and Schematic



## 8. Block Diagram and Schematic





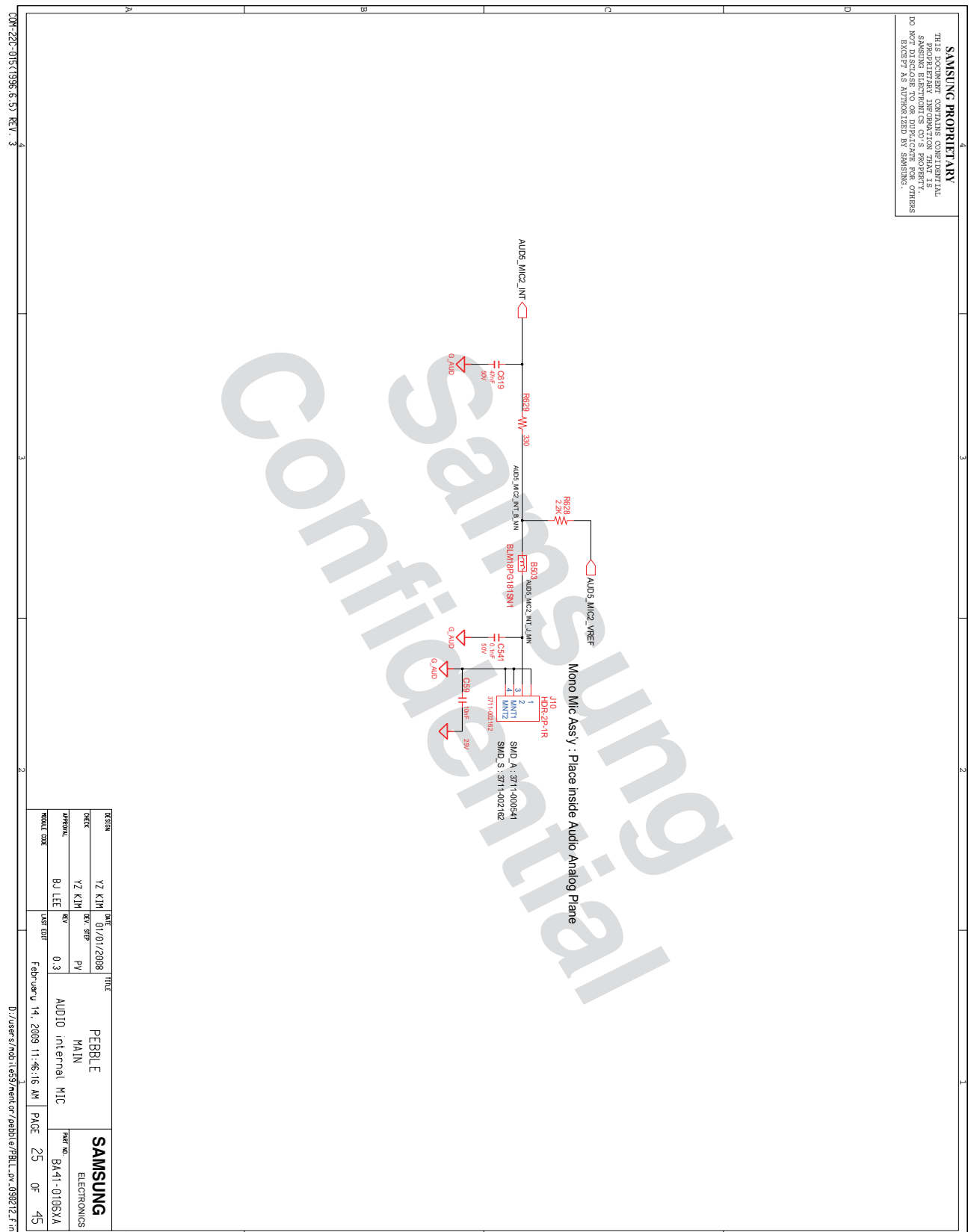






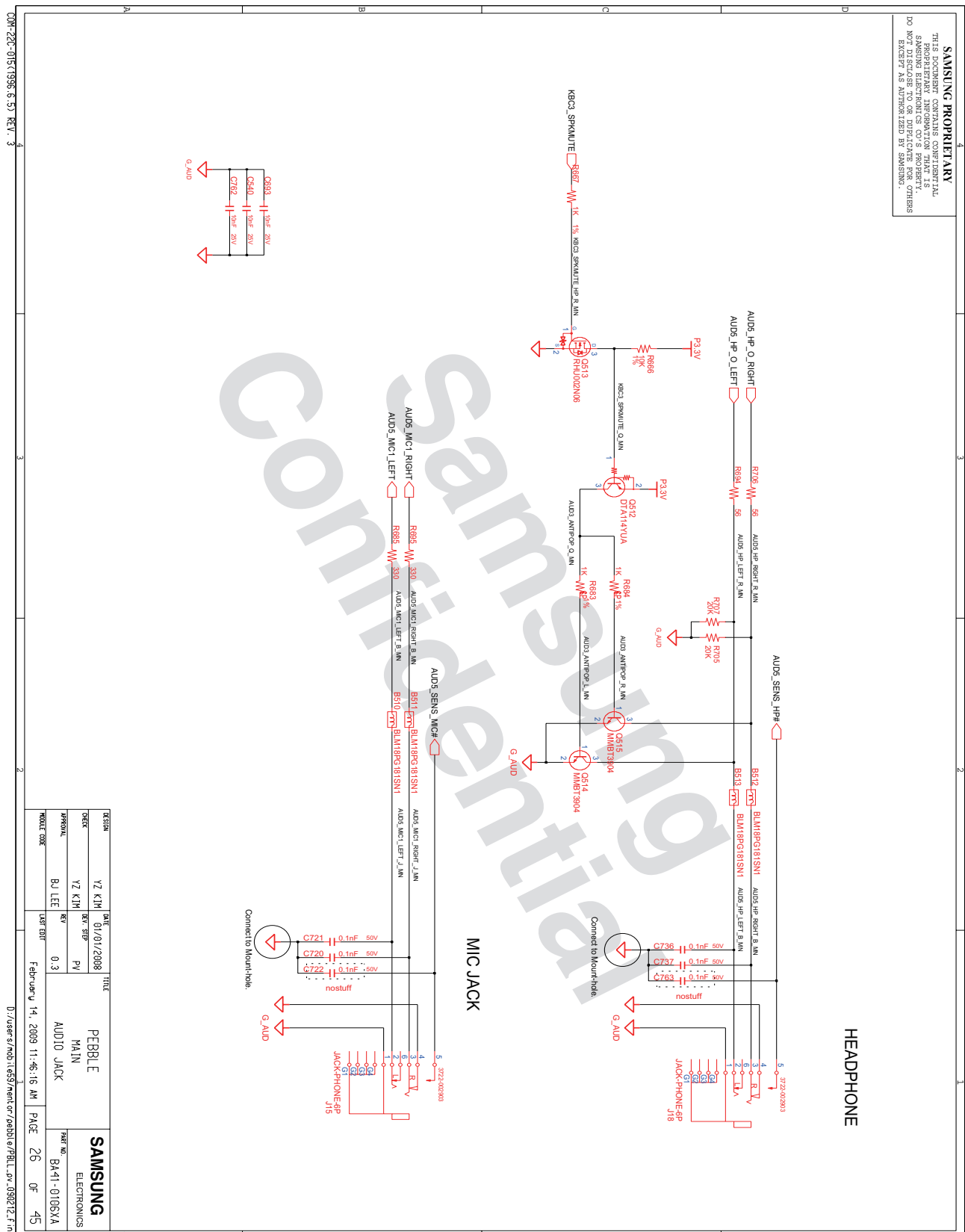
- 이 문서는 삼성전자의 기술 자산으로 승인자만이 사용할 수 있습니다 -  
- This Document can not be used without Samsung's authorization -

## 8. Block Diagram and Schematic



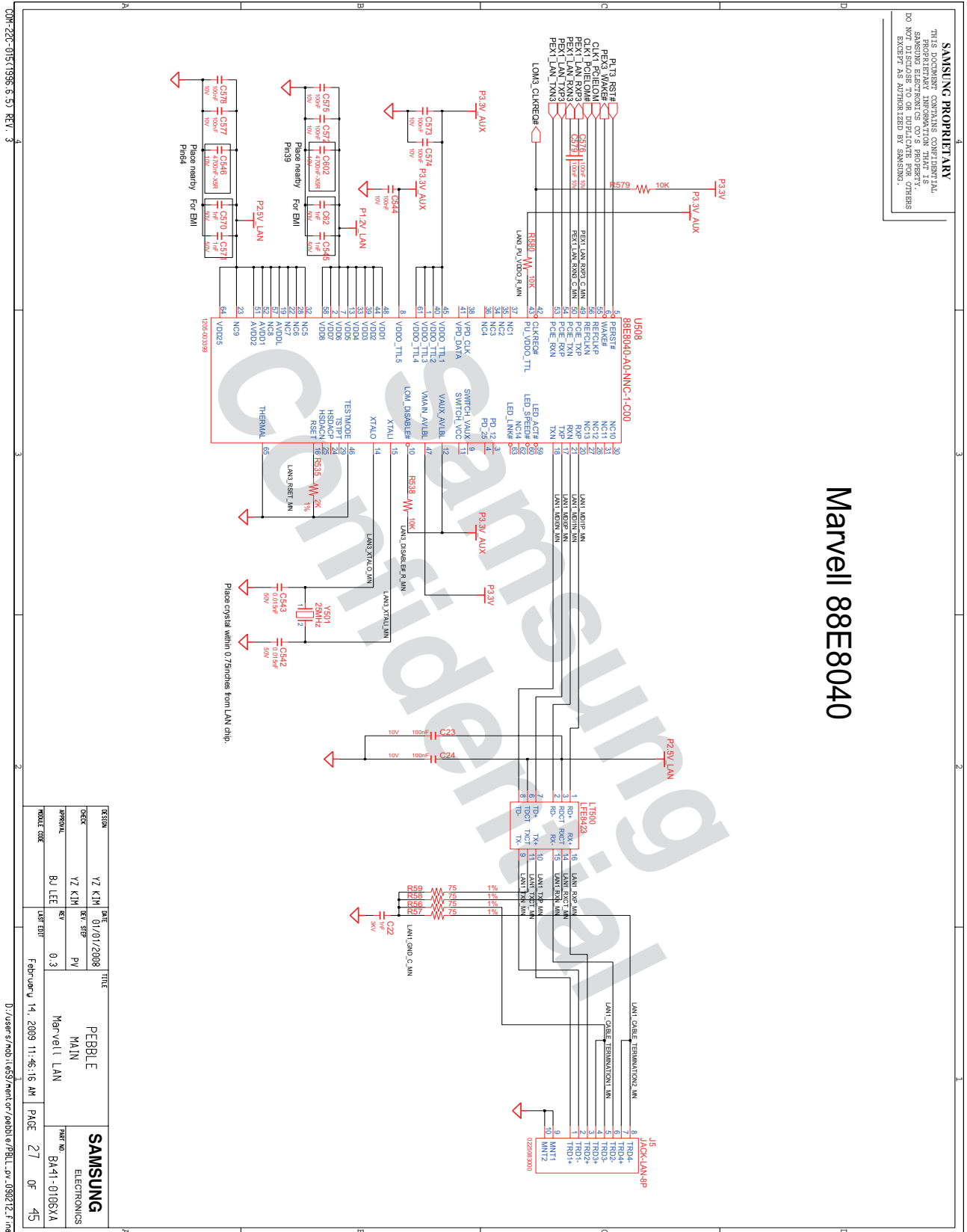
- 이 문서는 삼성전자의 기술 자산으로 승인자만이 사용할 수 있습니다 -  
- This Document can not be used without Samsung's authorization -

## 8. Block Diagram and Schematic

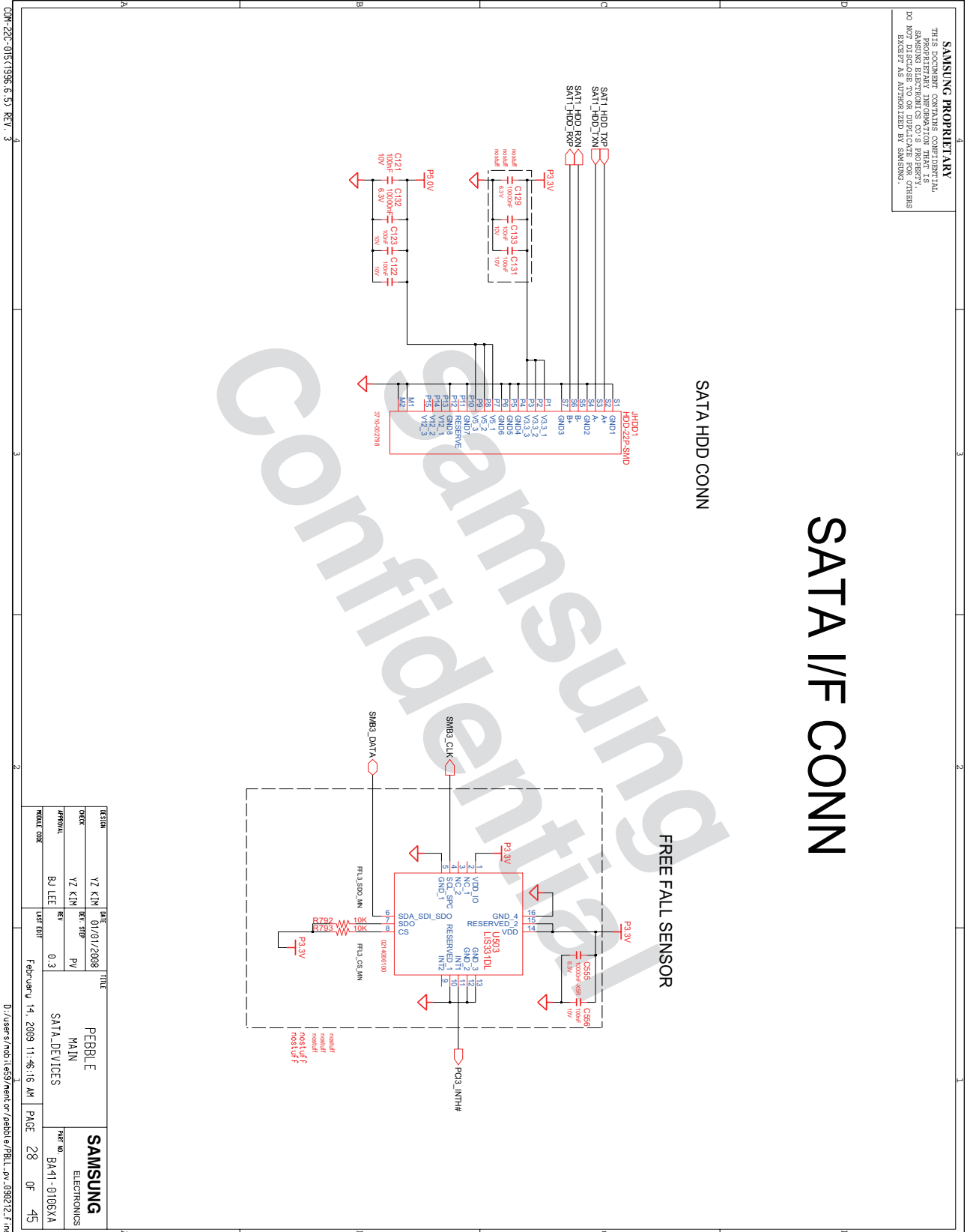


- 이 문서는 삼성전자의 기술 자산으로 승인자만이 사용할 수 있습니다 -
- This Document can not be used without Samsung's authorization -

## 8. Block Diagram and Schematic



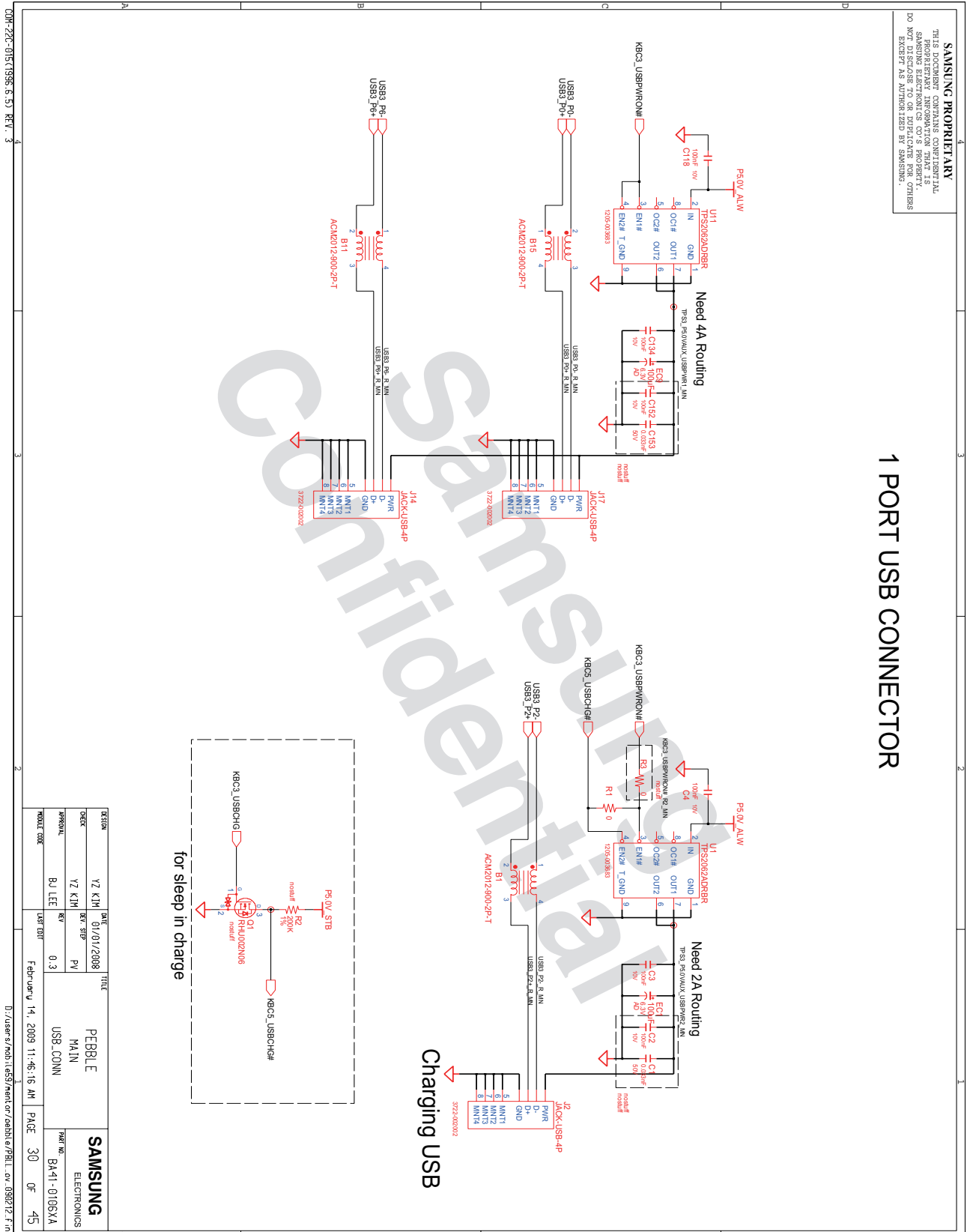
8. Block Diagram and Schematic





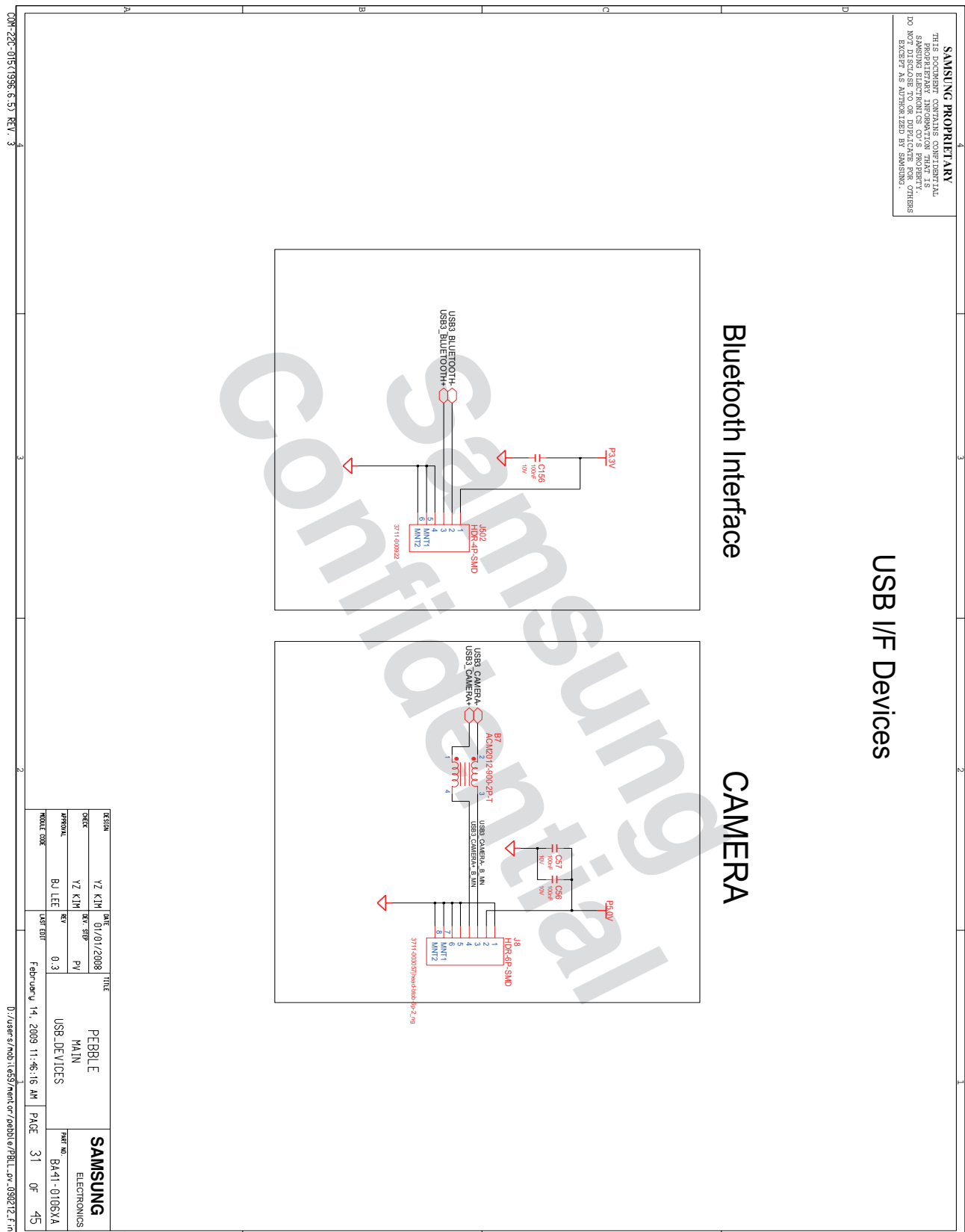
- 이 문서는 삼성전자의 기술 자산으로 승인자만이 사용할 수 있습니다 -
- This Document can not be used without Samsung's authorization -

## 8. Block Diagram and Schematic



- 이 문서는 삼성전자의 기술 자산으로 승인자만이 사용할 수 있습니다 -  
- This Document can not be used without Samsung's authorization -

## 8. Block Diagram and Schematic



- ## 8. Block Diagram and Schematic

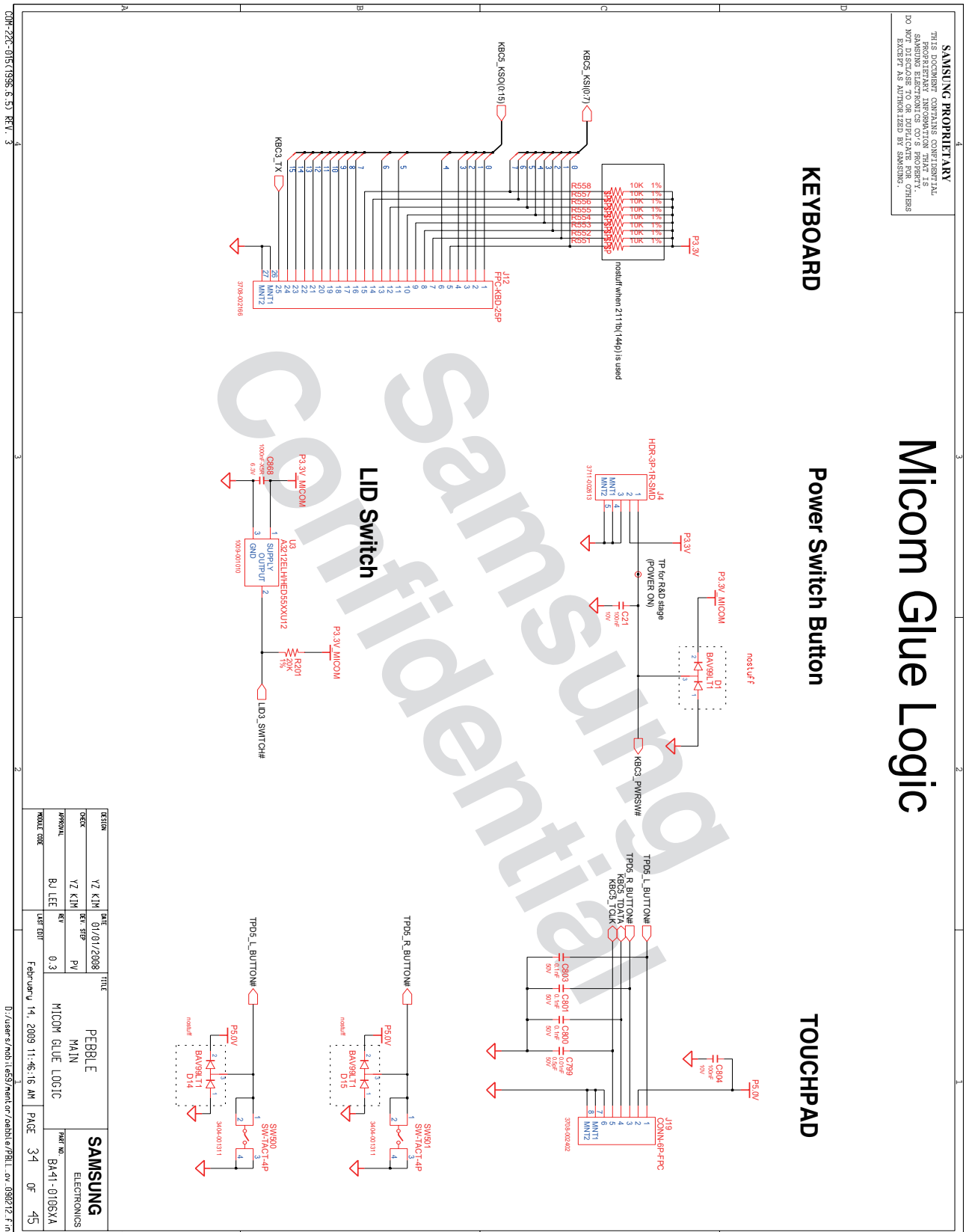






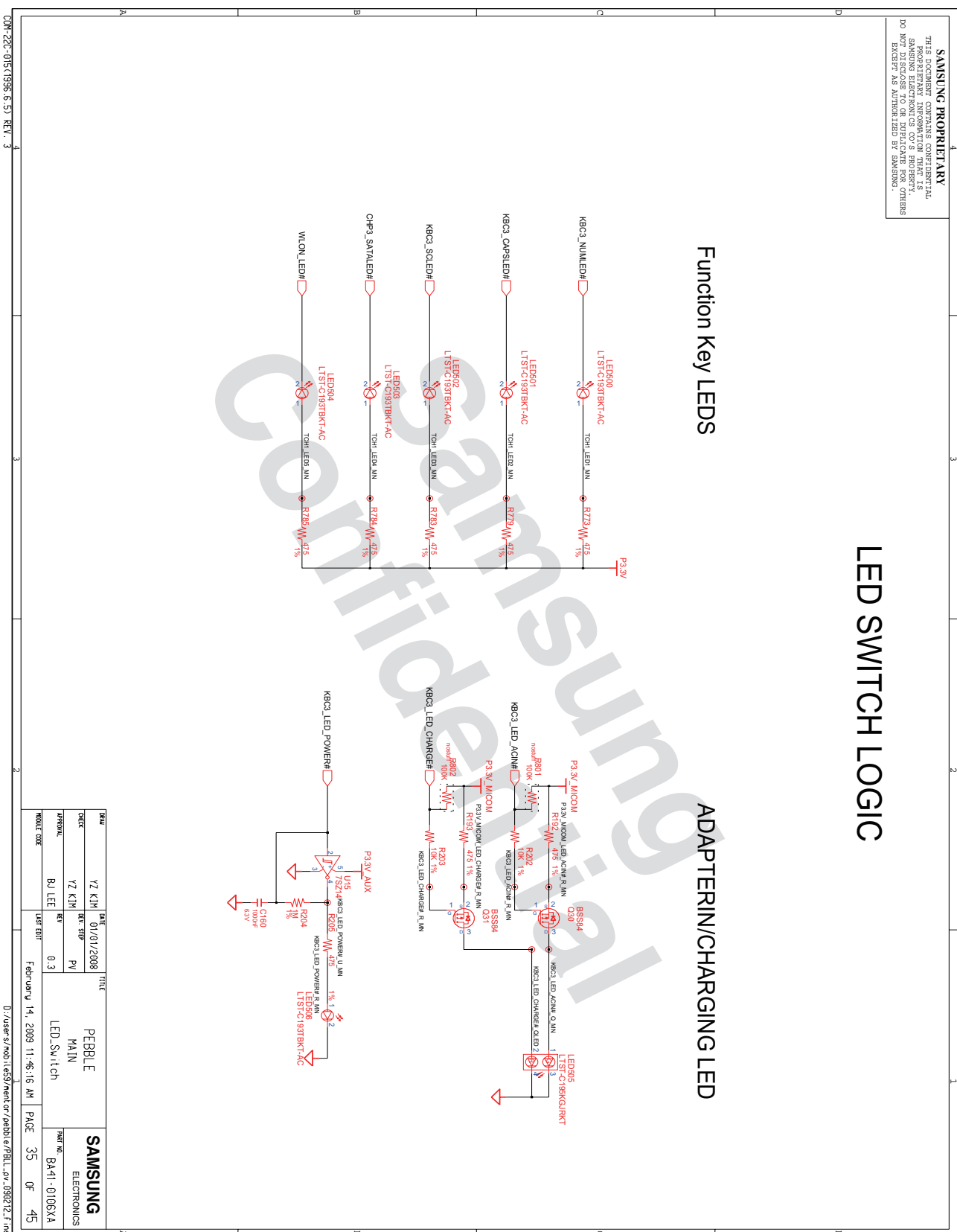
- 이 문서는 삼성전자의 기술 자산으로 승인자만이 사용할 수 있습니다 -
- This Document can not be used without Samsung's authorization -

## 8. Block Diagram and Schematic



- 이 문서는 삼성전자의 기술 자산으로 승인자만이 사용할 수 있습니다 -  
- This Document can not be used without Samsung's authorization -

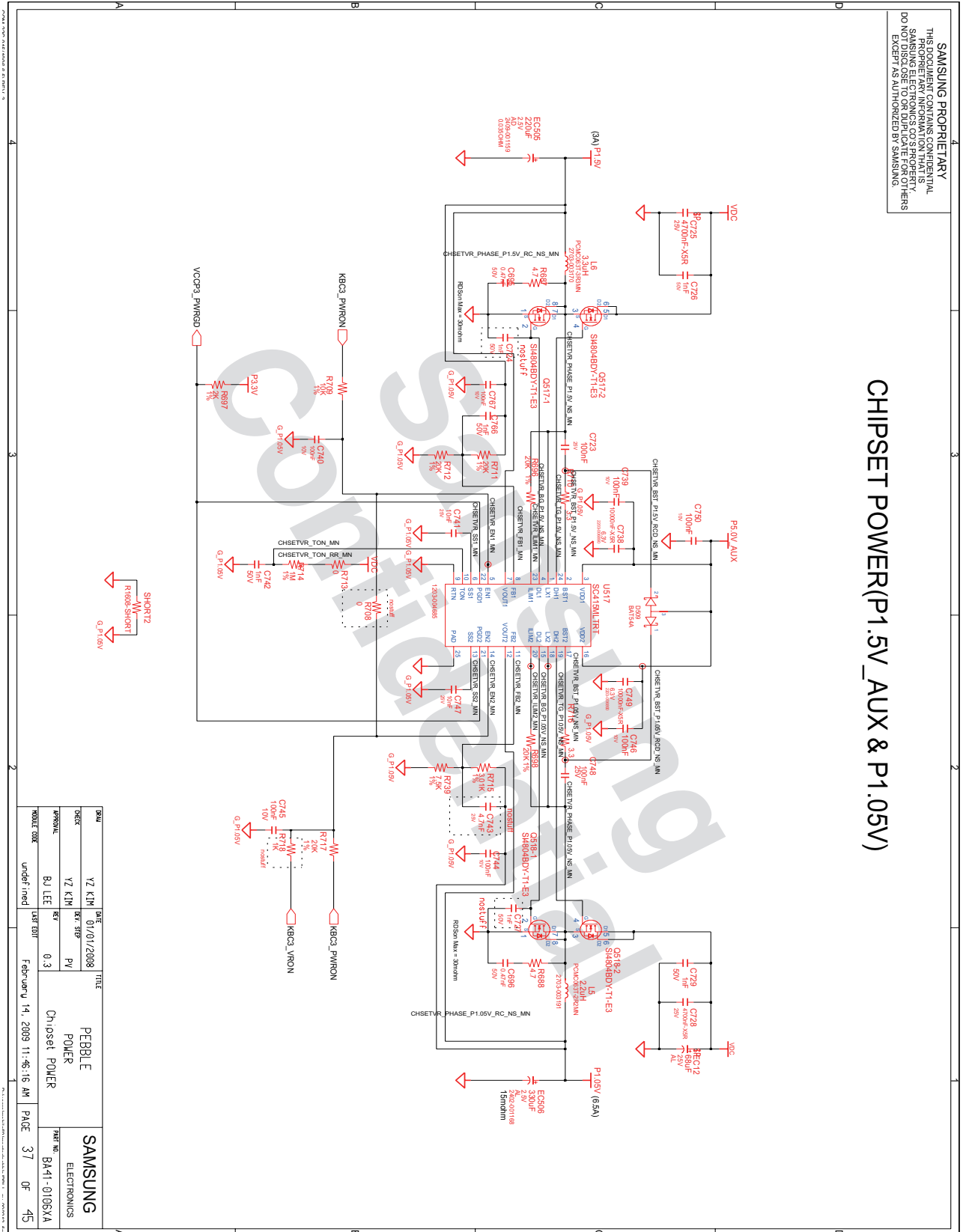
## 8. Block Diagram and Schematic



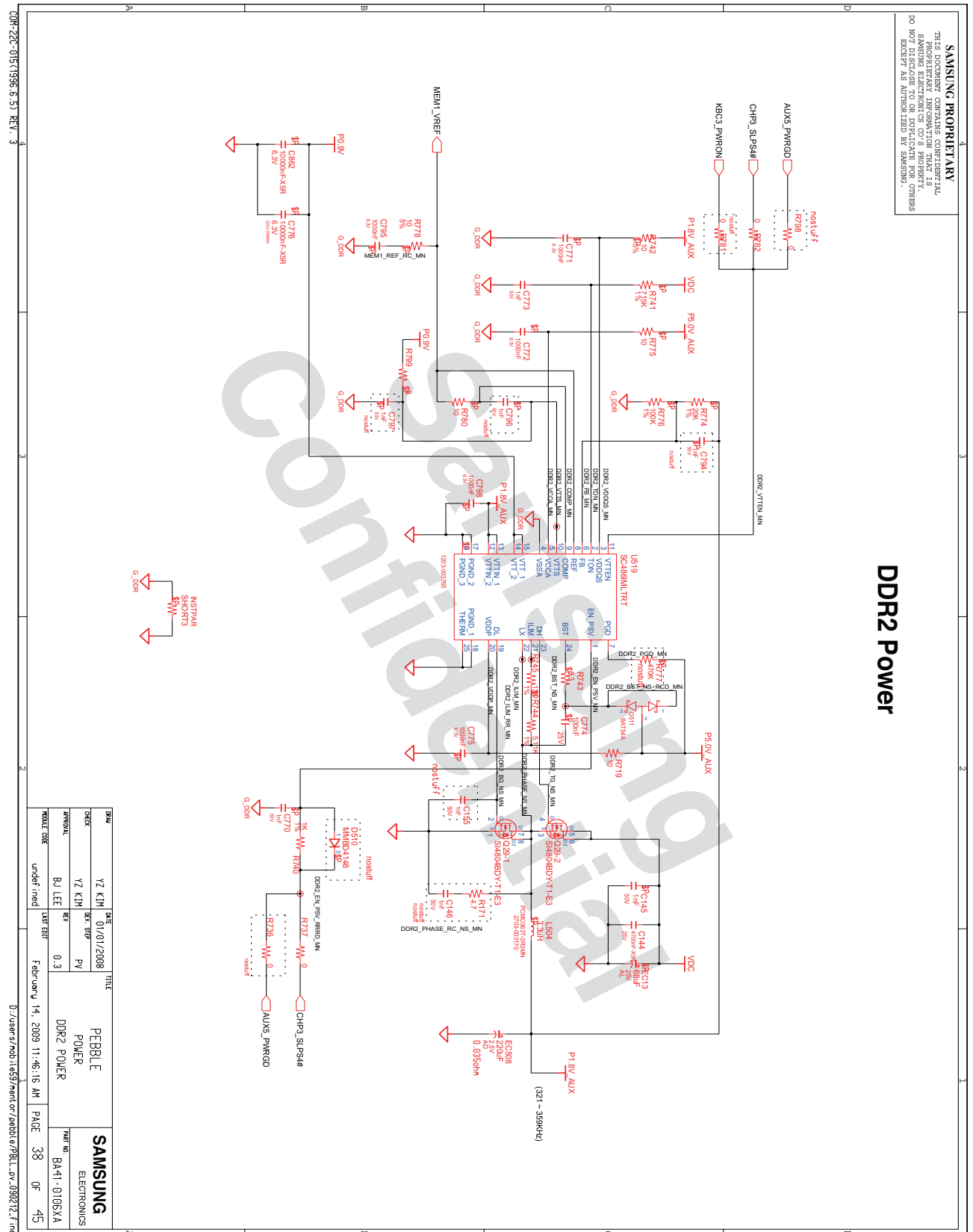


- 이 문서는 삼성전자의 기술 자산으로 승인자만이 사용할 수 있습니다 -
- This Document can not be used without Samsung's authorization -

## 8. Block Diagram and Schematic

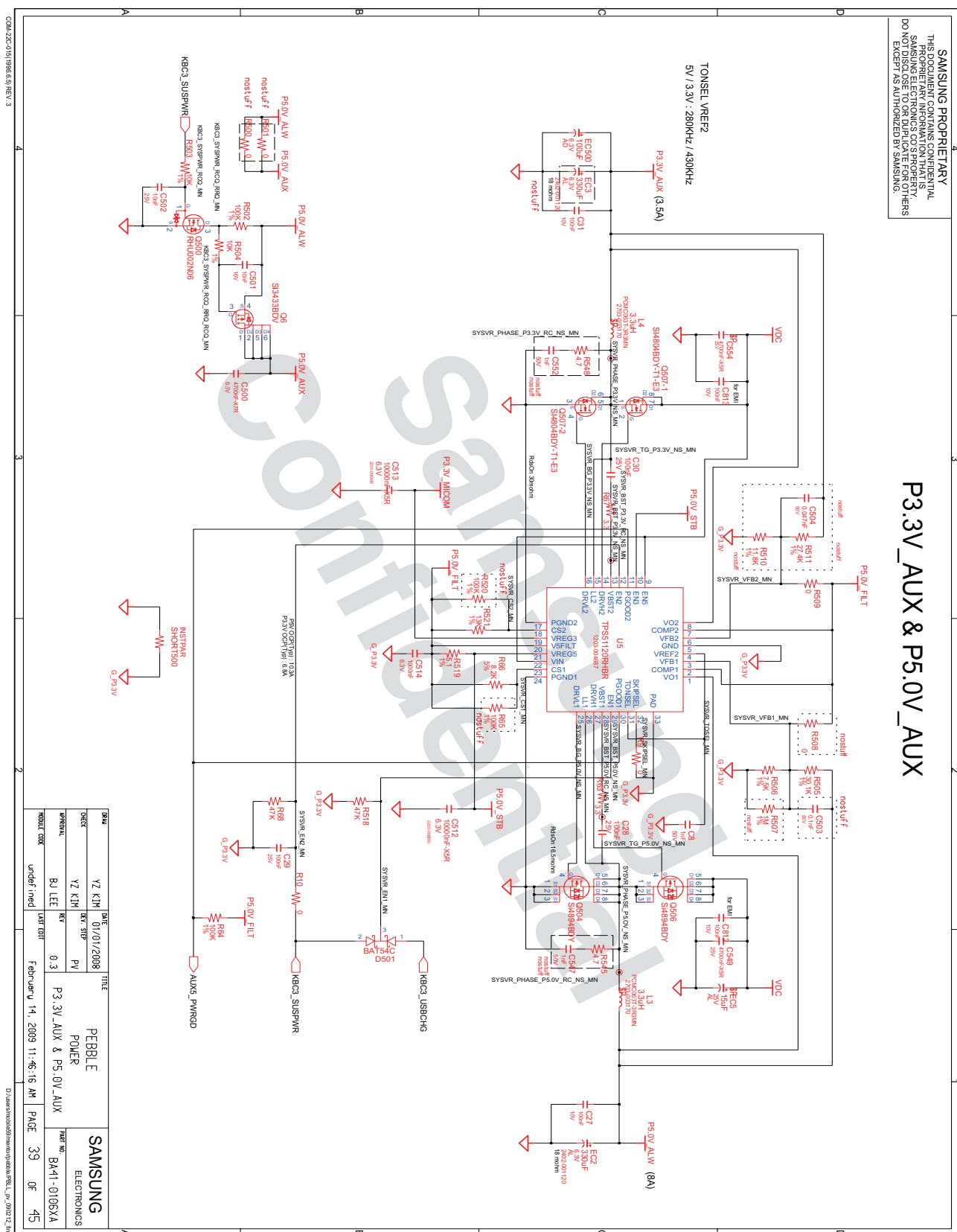


## 8. Block Diagram and Schematic



- 이 문서는 삼성전자의 기술 자산으로 승인자만이 사용할 수 있습니다 -  
- This Document can not be used without Samsung's authorization -

## 8. Block Diagram and Schematic



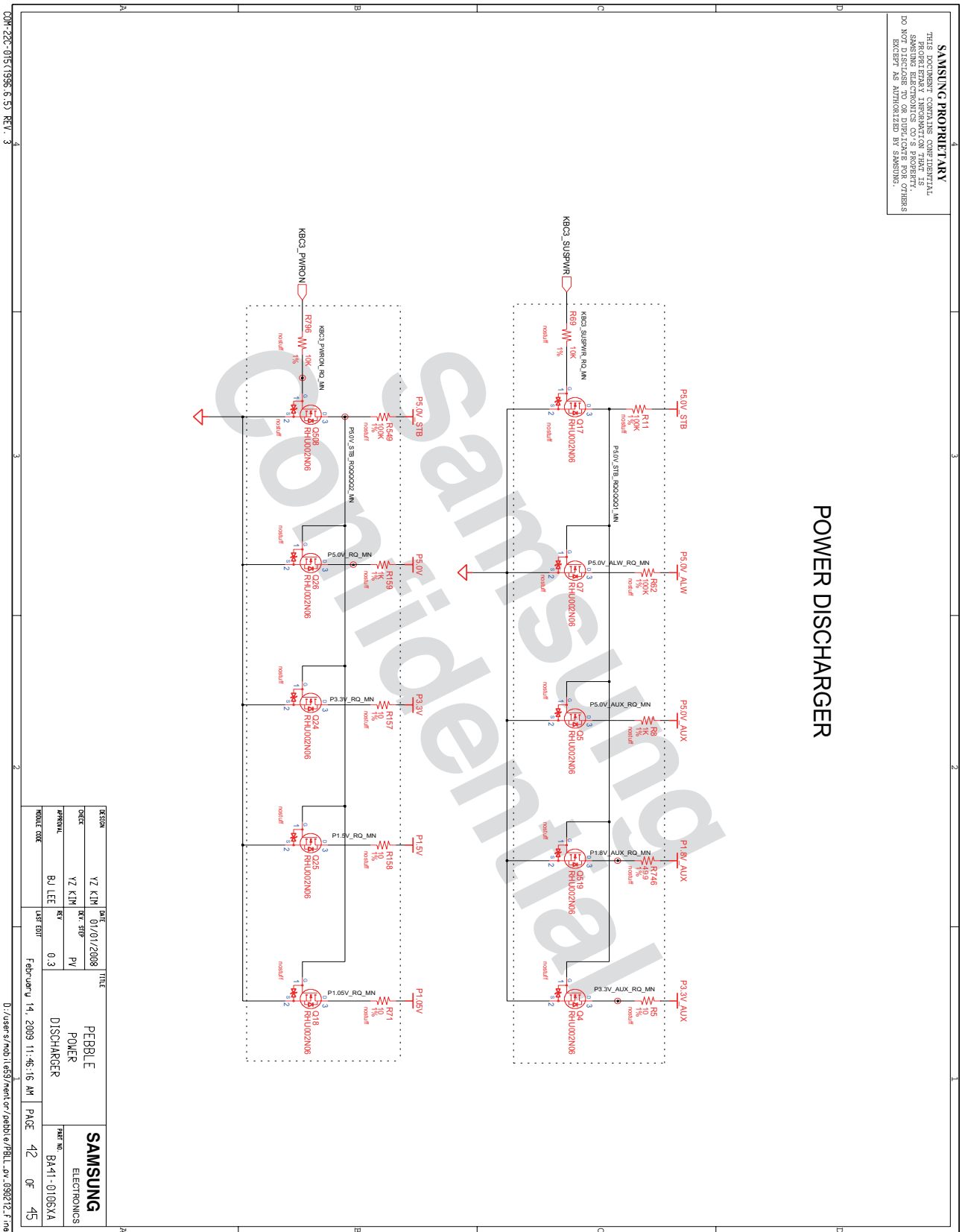




- ## 8. Block Diagram and Schematic

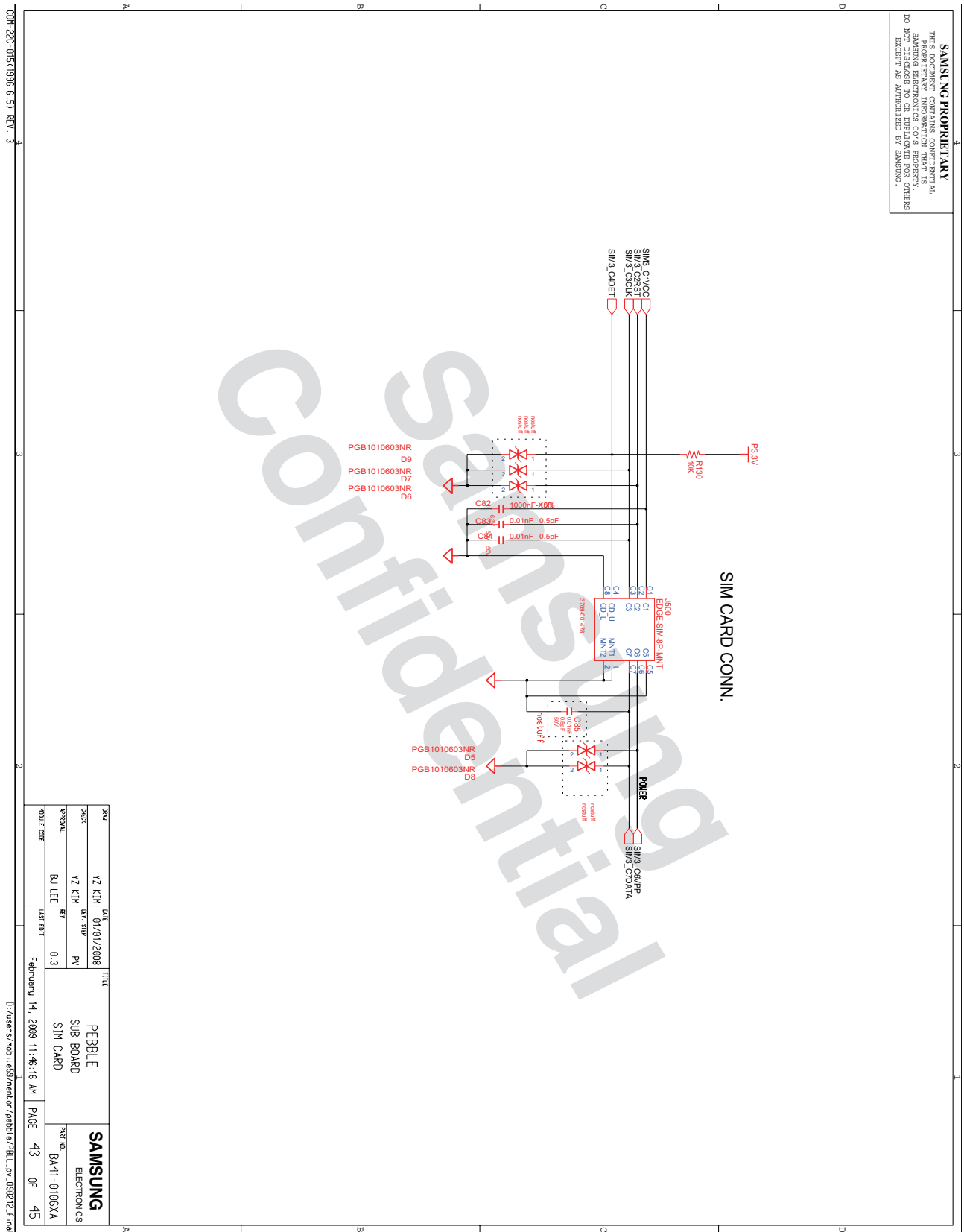


8. Block Diagram and Schematic



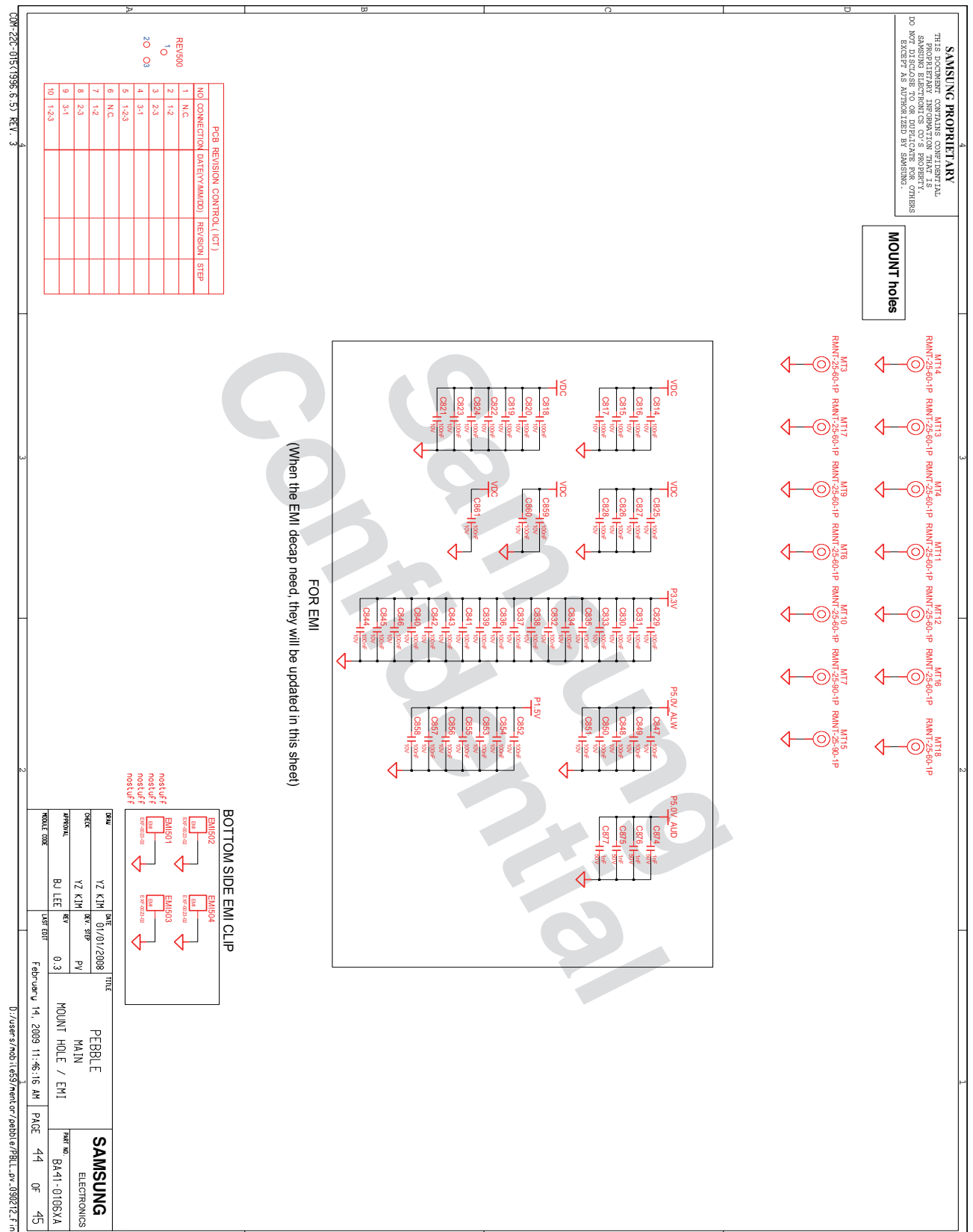
- 이 문서는 삼성전자의 기술 자산으로 승인자만이 사용할 수 있습니다 -
- This Document can not be used without Samsung's authorization -

## 8. Block Diagram and Schematic



- 이 문서는 삼성전자의 기술 자산으로 승인자만이 사용할 수 있습니다 -  
- This Document can not be used without Samsung's authorization -

## 8. Block Diagram and Schematic



- ## 8. Block Diagram and Schematic

N310

---

## 8. Block Diagram and Schematic

---