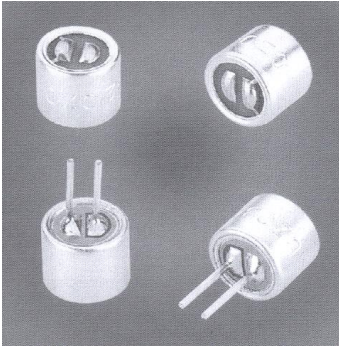


# Soberton Inc.

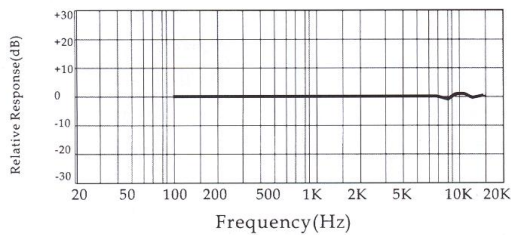
## EM6050, EM6050P

*Omnidirectional Electret Condenser Microphone*

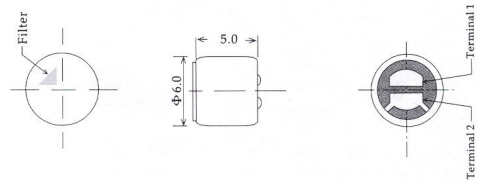


Sensitivity	0dB = 1V/Pa. 1KHz
Directivity	Omnidirectional
Impedance	Low Impedance
Current Consumption	Max. 0.5mA
Standard Operation Voltage	2.0V
Sensitivity Reduction	Within -3dB at 1.5V
S/N Ratio	More than 60dB
<b>Sensitivity Range</b>	<b>-38 ± 3dB, -40 ± 3dB, -42 ± 3dB, -44 ± 3dB, -46 ± 3dB, -48 ± 3dB</b>

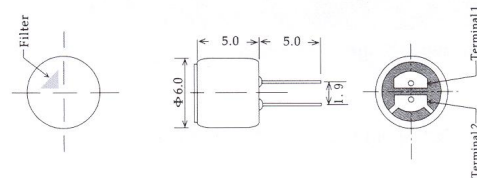
### Typical Frequency Response Curve:



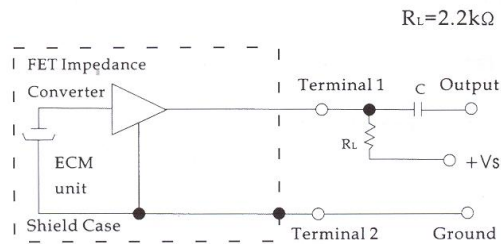
### EM6050



### EM6050P



### Schematic Diagram:



Unit: mm