

Data Restore

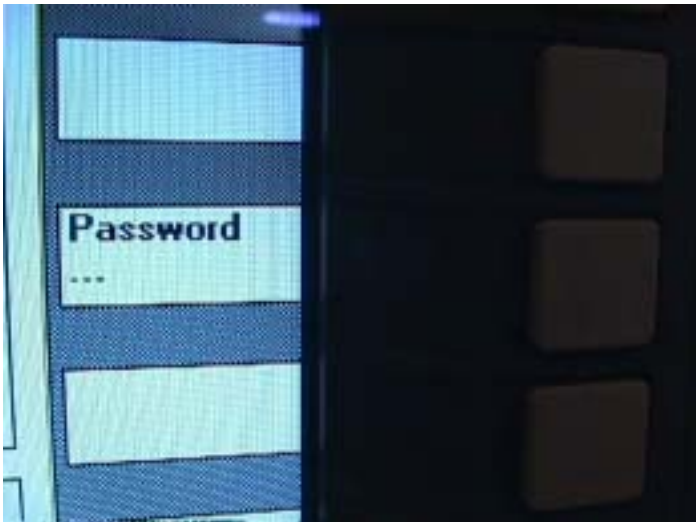
1. Press Menu select button



2. Press Start-up key.



3. Press password to in password set



4. Connect USB interface for user keyboard.



5. Or open Cover behind of operate box to connect.



6. Key in SUNRISE



7. Press OK key, If key in wrong Secret code can press Abort.



8. Press Services key.



9. Press arrow side>.



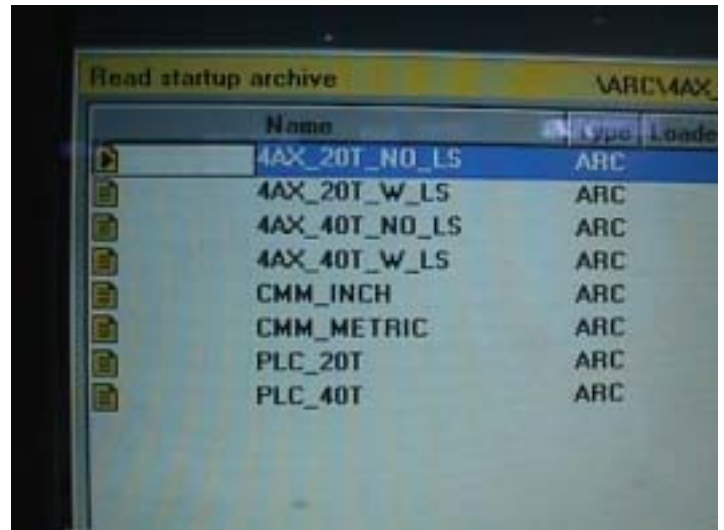
10. Press Series start-up key.



11. Press select down key



12. To choose 4AX-20T-NO-LS location.



13. Press Start key



14. Press Make start up archive.



15. Press NCK Reset key to finish parameter return.



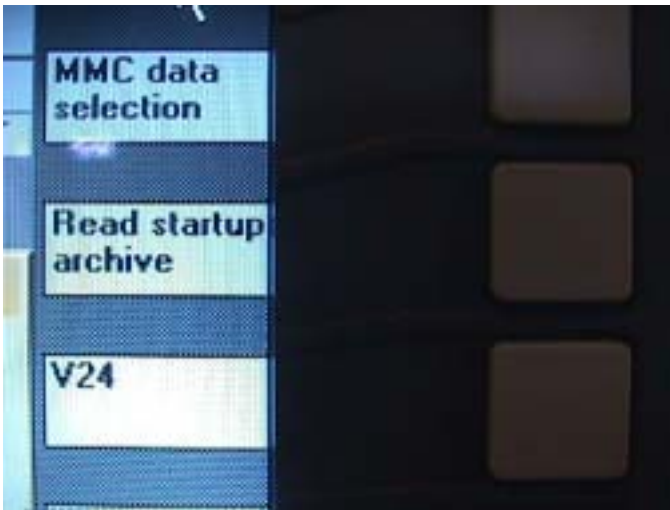
16. Press Menu select button



17. Press Start up key.



18. Press Read startup archive key



19. Press select down key.



20. To choose PLC-20T



21. Press Start key



22. Press Make startup archive



23. Press NCK reset key for finish PLC Return.



24. PLC 復原作業結束 Finish work of return PLC