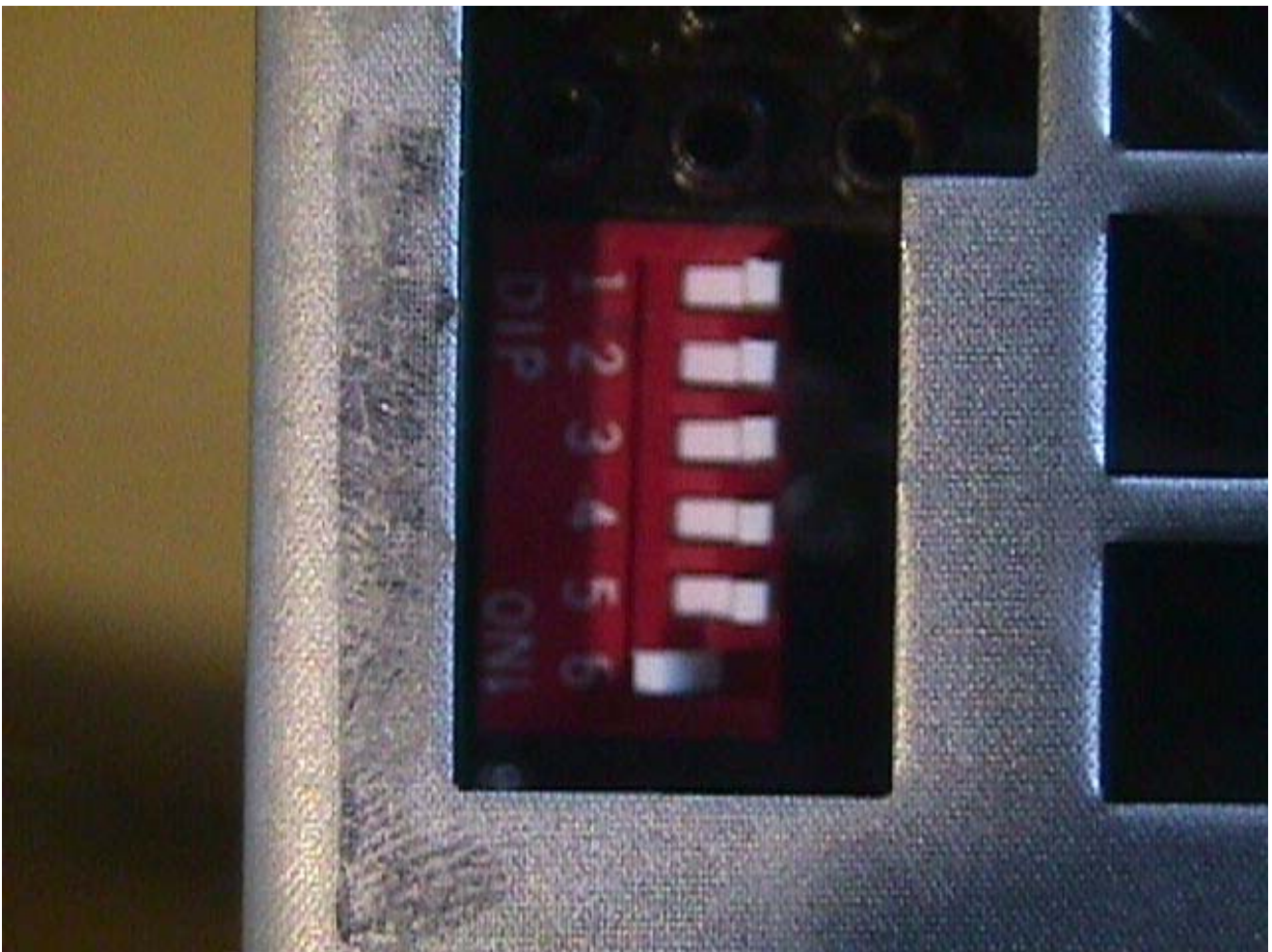


Require of Power

1. Power voltage 460V/50HZ for Siemens.
2. Control 220V/50/60HZ for Hardinge.
3. Maximum kilowatts are 25KW.
4. Maximum 75A for no fuse breaker.
5. User 22mm² wire.
6. User copper bar of 15mm diameter and 1 meter long for grounding.
7. The Transformer is 40 KVA. Output Voltage is 460 V
Input Voltage is 220 V
8. For adjust voltage switch.



9. Instruct make.



10. Voltage must be balanced for grounding.



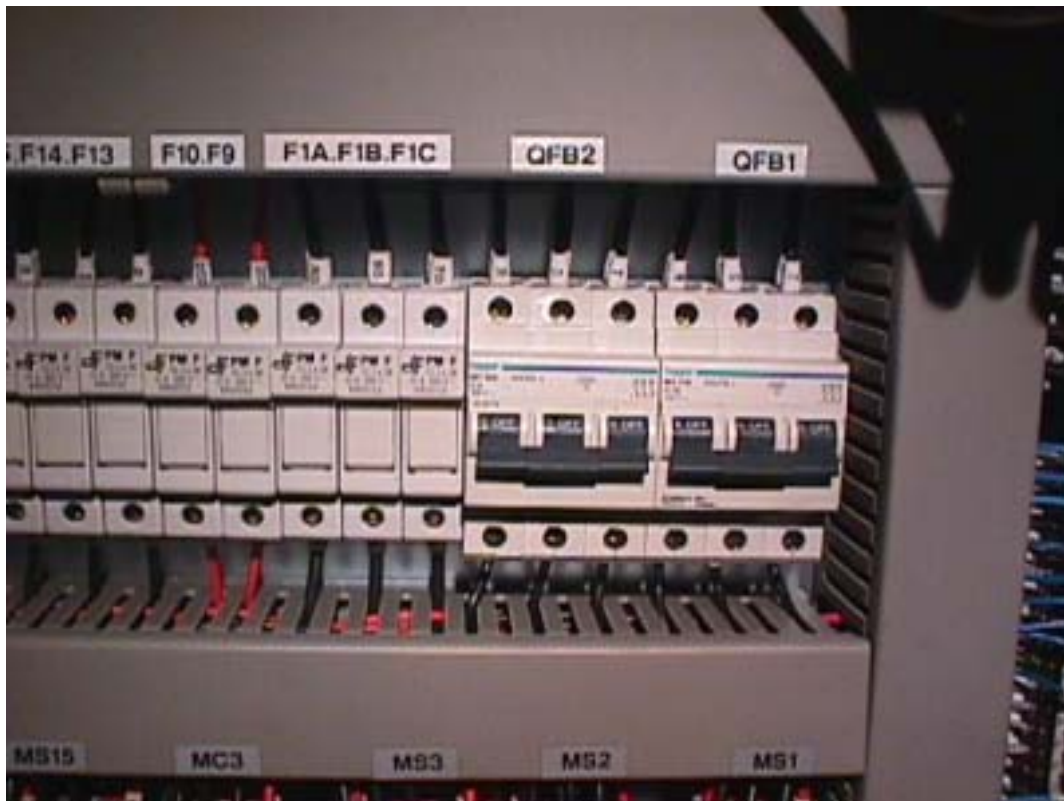
11. If voltage not balanced don't Connect grounding bar.



12. User base or column to grounding.

13. To drilling a hole on ground near machine, and to Knock copper bar and connect wire.

14. To open control box and to push up the switch.



15. Open behind of operate box turn left To operating location.



16. Turn non-operating location before shipping.



17. Maximum temperature are 55°C in the control box.

18. Turn off power after 3 minutes can connect ground bar.