

Revise Tool Magazine Memory

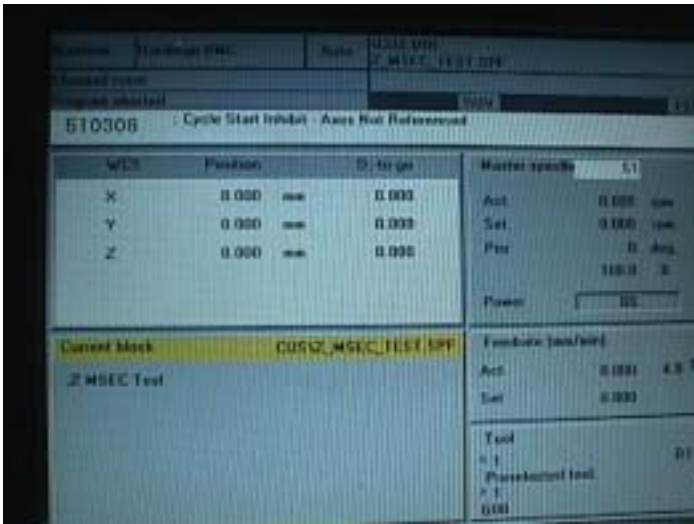
1. Press auto button



2. Press Menu select key.



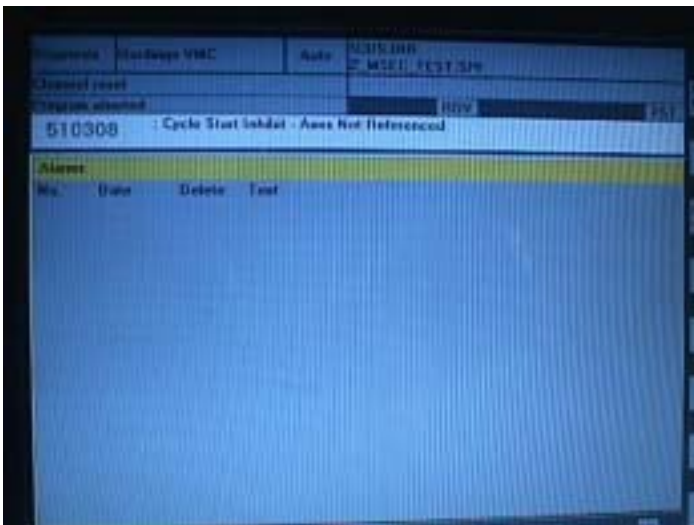
3. Show this page on monitor



4. Press Diagnosis key.



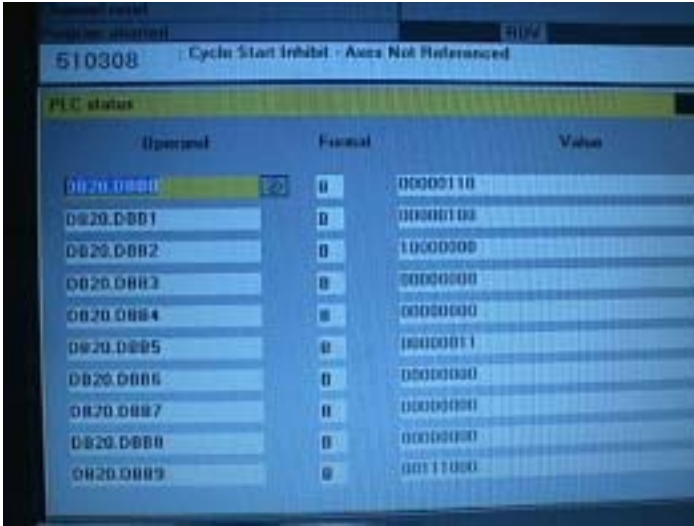
5. Show this page on monitor



6. Press PLC key.



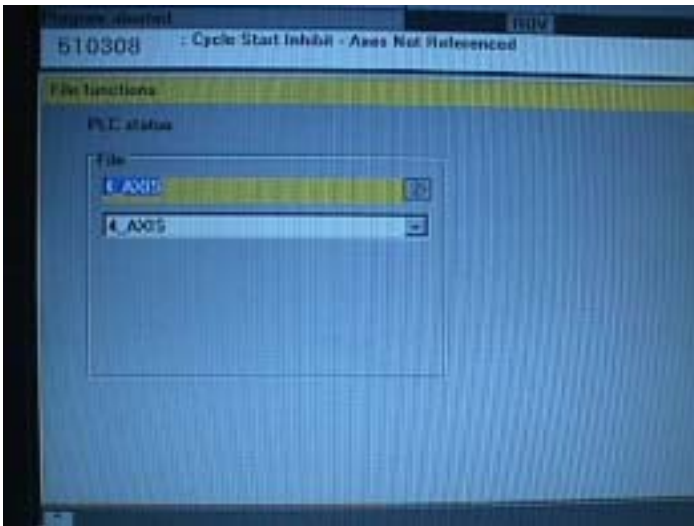
7 Show PLC status on monitor



8. Press File function.



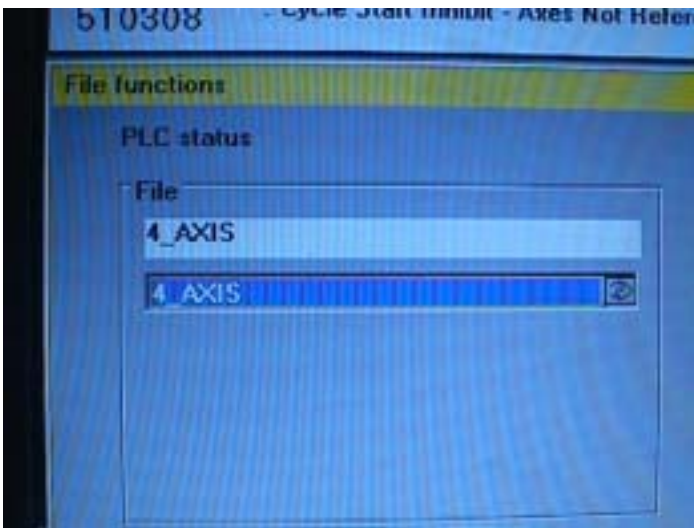
9. Show File functions on monitor



10. Press down select key.



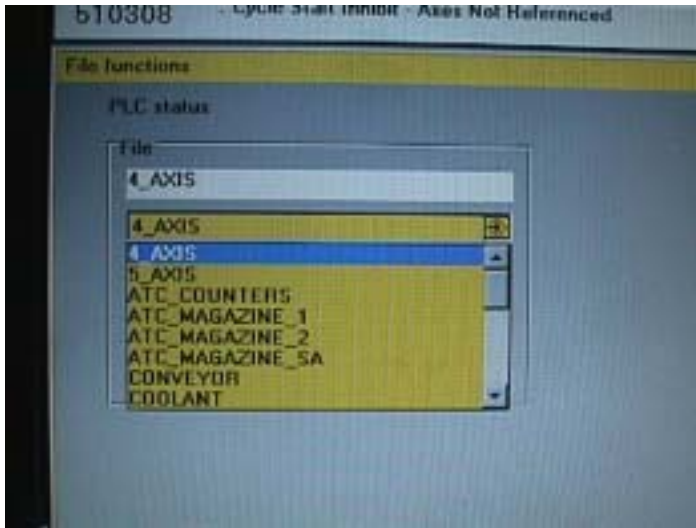
11. Show File function on monitor



12. Press input.



13. Show this page on monitor



14. Press select down key.



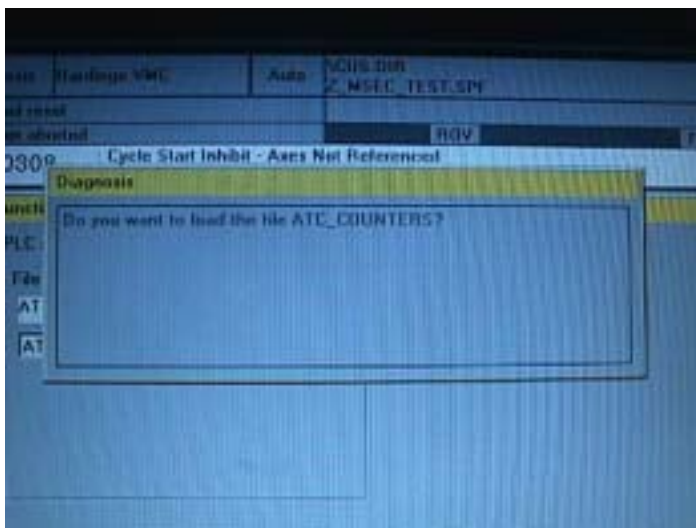
15. To choose ATC-counters location



16. Press Load key.



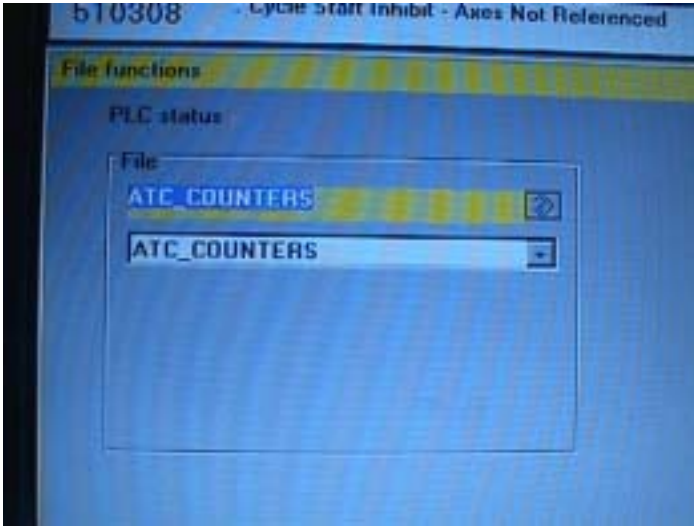
17. Show this page on monitor



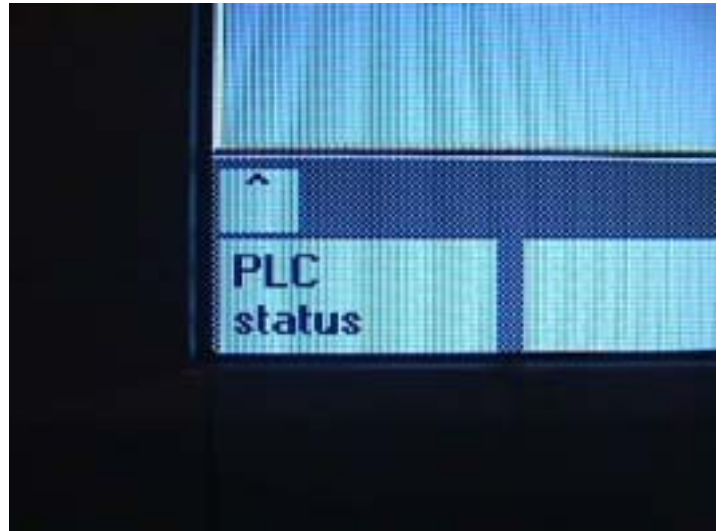
18. Press Yes key .



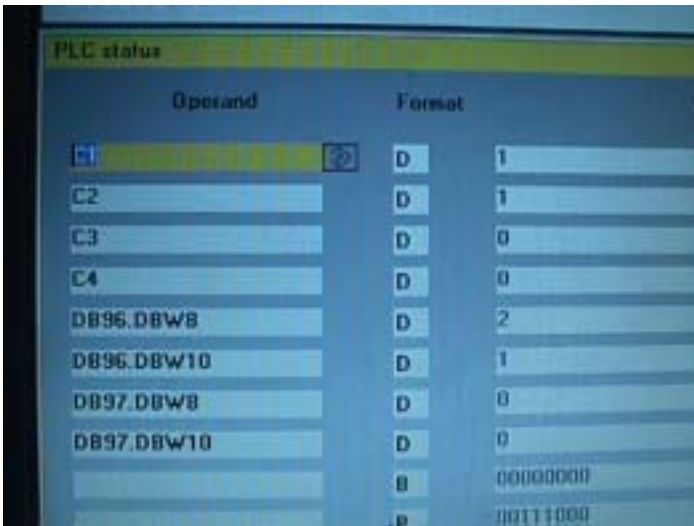
19. Show this page on monitor



20. Press PLC status key.



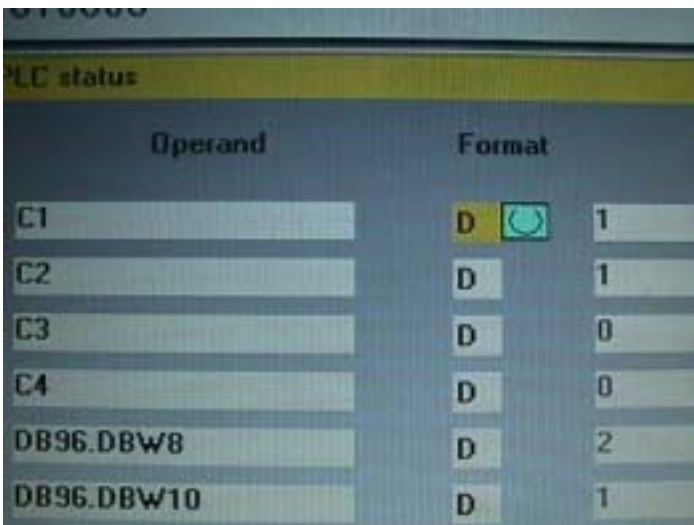
21. Show PLC status on monitor



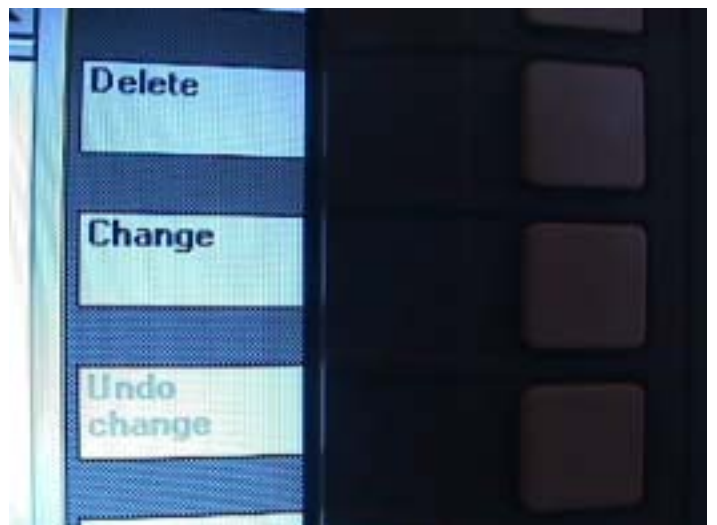
22. Press select right key.



23. Move cursor to right side



24. Press Change key.



25 Press Accept key to change finish



26. Press reset button For finish the work

