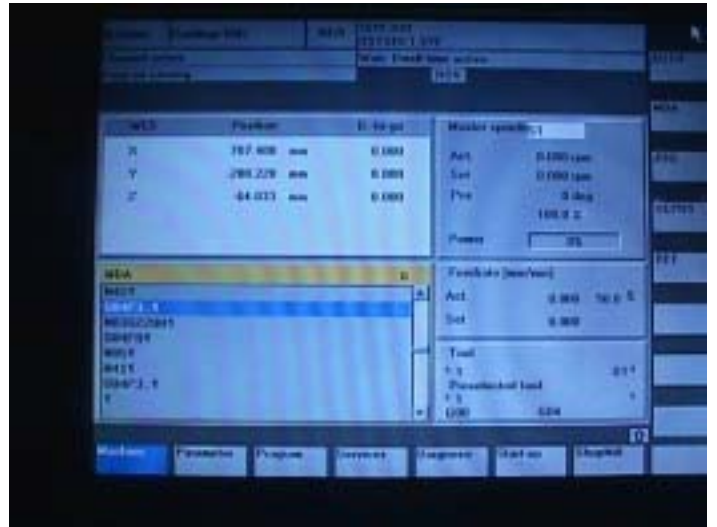


Setting Password

1. Press Menu select key



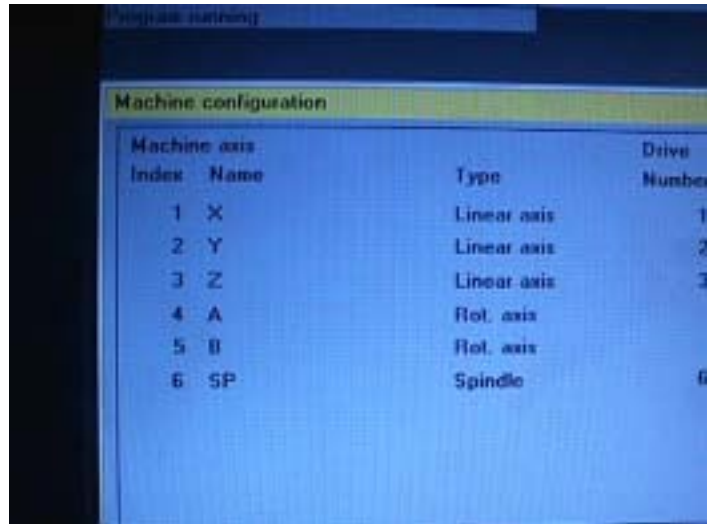
2. Show this page on monitor.



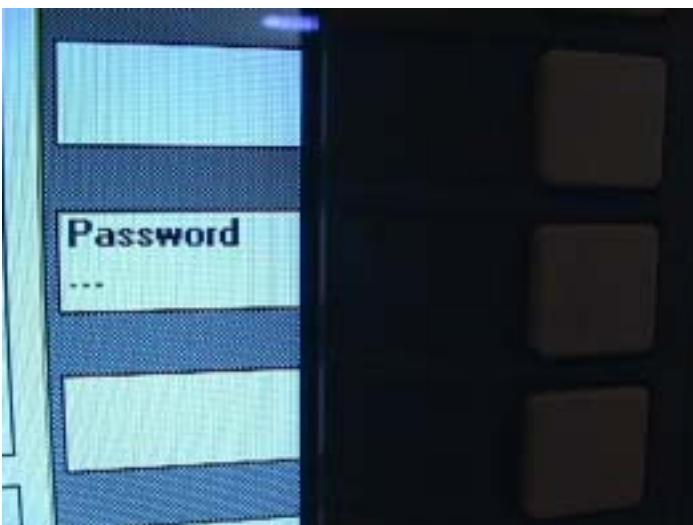
3. Press Start Up key



4. Show Machine configuration on monitor.



5. Press Password key



6. Press Set Password key.



7. Show Define password on monitor



8. Open behind of Operate box and connect another keyboard.



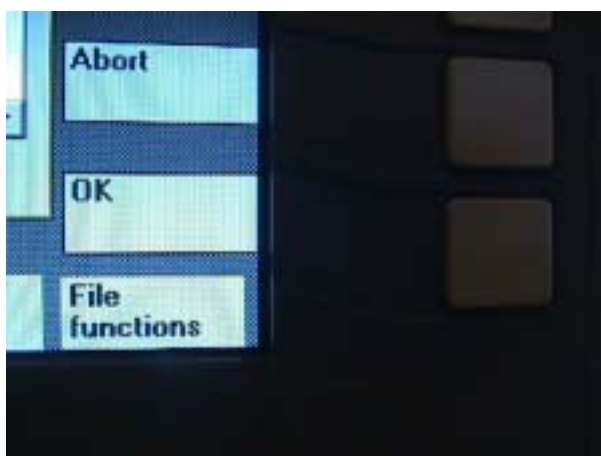
9. Or user USB link



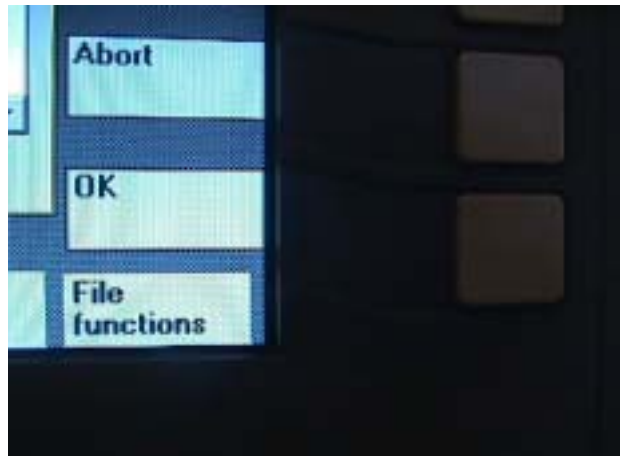
10. Key in SUNRISE.



11. Press OK key



12. Passable key in again if wrong password



13. Setting password finish