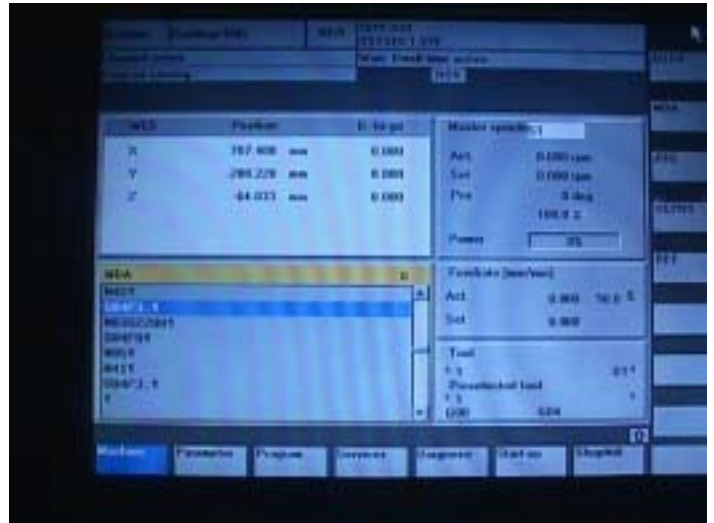


# Setting Of Tool Change Point By Z Axis

1. Press Menu select button



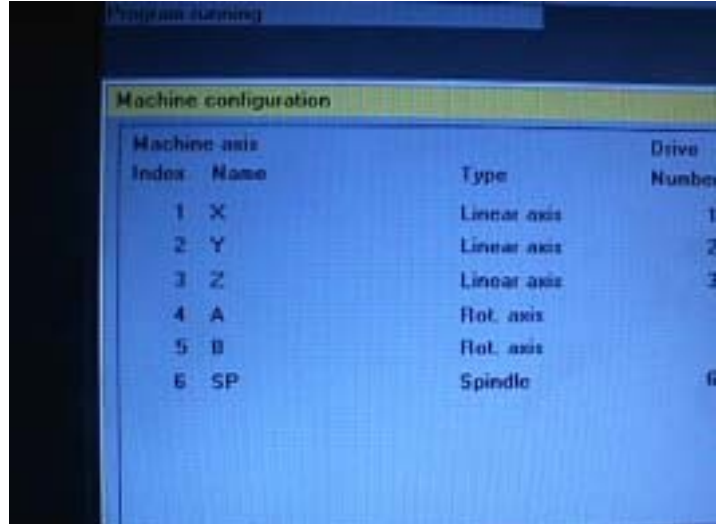
2. Show this page on monitor.



3. Machine Configuration, Press Start-up key



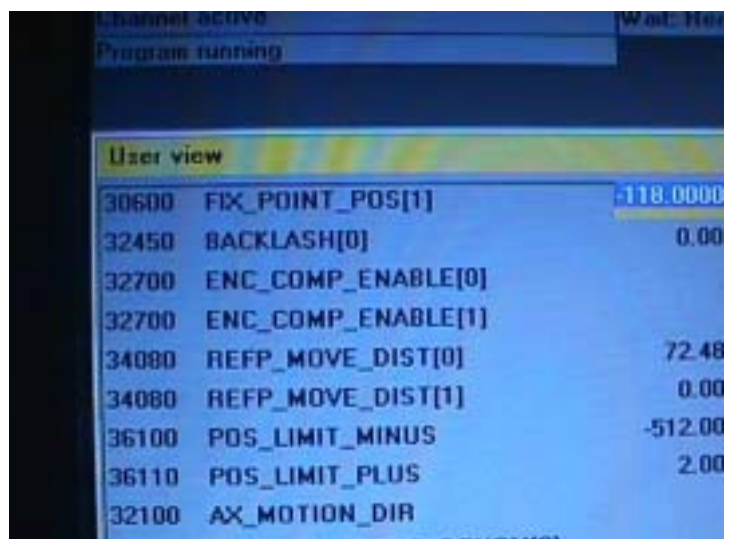
4. Show Machine Configuration on monitor.



5. Press User views button



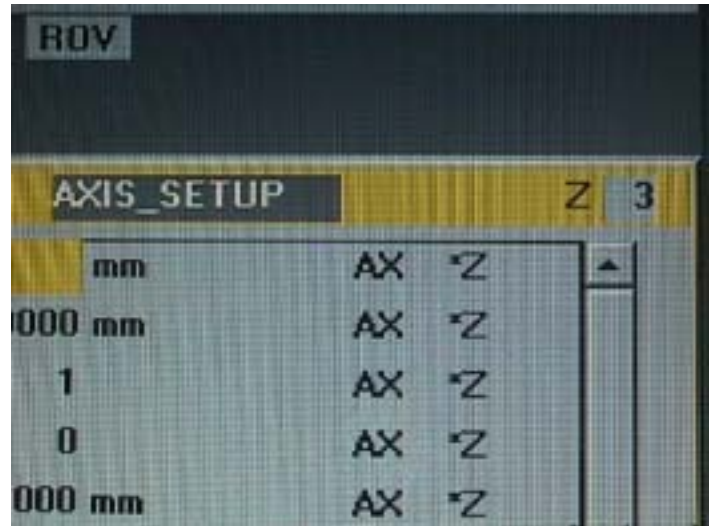
6. Show User view on Monitor.



7. Press Axis with drive



8. Show Axis-setup on Monitor.



9. Press Select down key



10. To choose 30600 Location.



11. To adjust data and press input key.



12. Finish work