

# Data Transmission

A To make reserve data(NC and PLC)

1. Press Menu select key



2. Press services key.



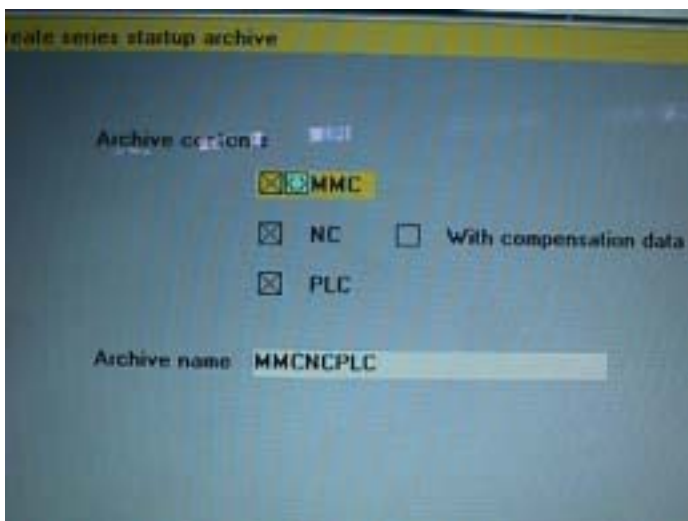
3. Press arrow right key



4. Press service start up key.



5. Show this page on monitor



6. Press Select down key to choose Archive name Location and key in MMCNPLC



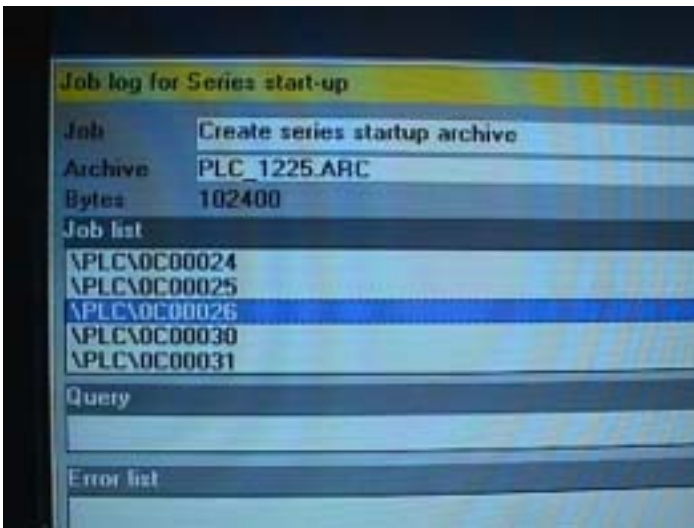
7. Press input key



8. Press Archive key.



9. Show this page on monitor



10. Show carry out in monitor.



11. Finish make reserve data of NC and PLC

**B. From 3.5 disk copy to H D**

**1. Press Menu select key**



**2. Press Services key.**



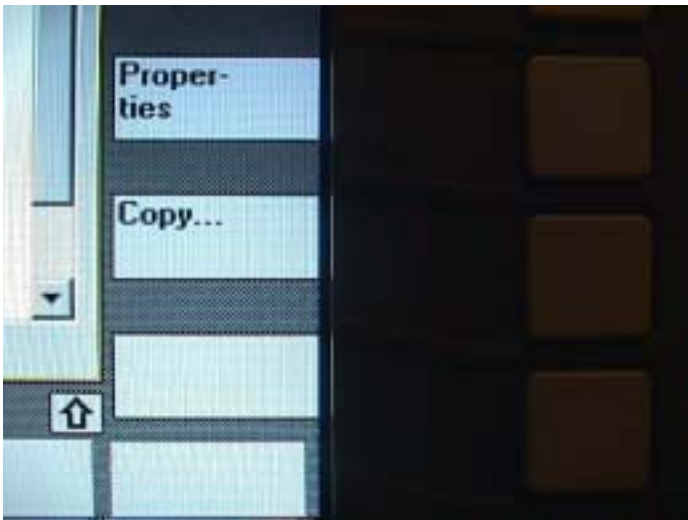
**3. Press Disk key**



**4. Press Select key.**



**5. Press copy key**



**6. Press archive key.**



7. Press input key



8. Press insert key.



9. Copt finish

### C. From HD copy to 3.5 disk

1. Press Menu select key



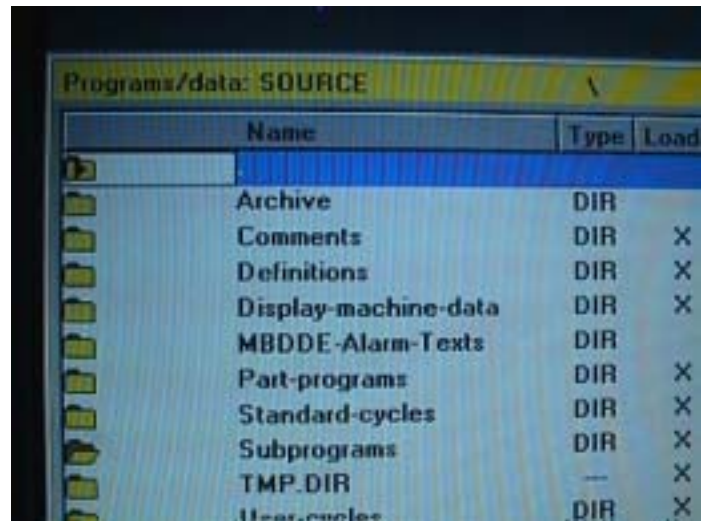
2. Press Services key.



3. Press Manage data key



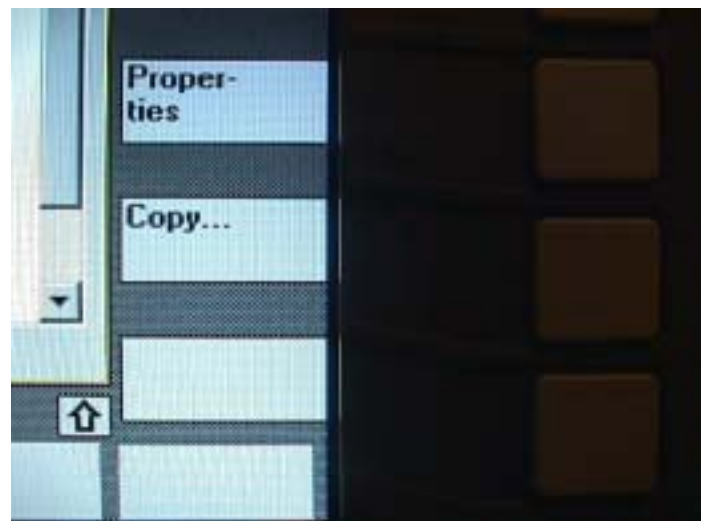
4. Show this page on Monitor.



5. Press select down key



6. Press copy key.



**7. Press Disk key**



**8. Press insert key.**



**9. Transmission finish from HD to 3.5**

## D Form PC to Siemens PC

1. To connection RS 232C interface



2. Press menu select key.



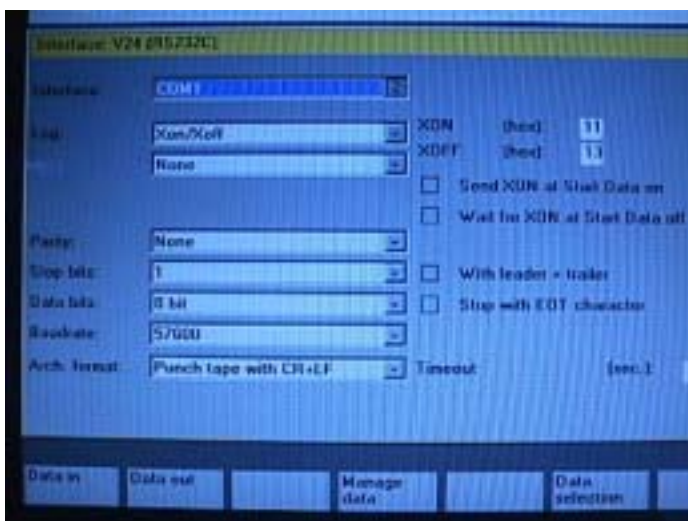
3. Press Service key



4. Press Interface key .



5. Show Interface on monitor



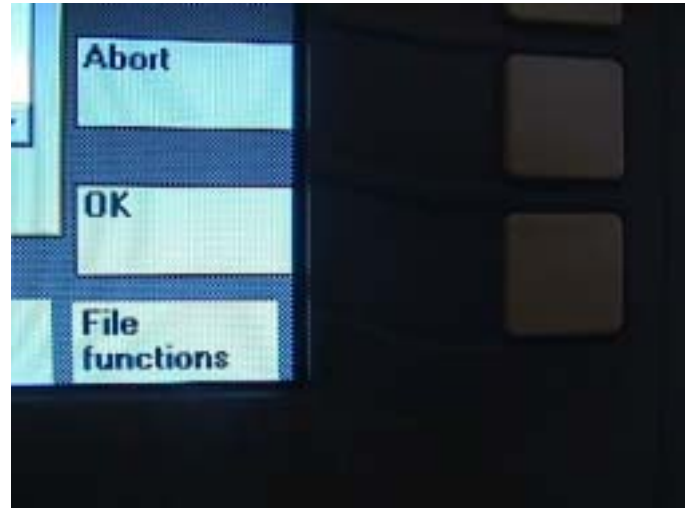
6. Press Select key to Choose location.



7. After revise data press input key



8. And after Revise all data press OK key .



9. Press Data in key



10. Or data out for Transmission



11. Finish work