

FUHO CMS Quick Installation Guide

FCW-SE064 V1.0

Table of Contents

| | |
|--|----|
| Terms and Conditions | 3 |
| System Requirements | 5 |
| Installation | 6 |
| Running the software in Windows Vista or Windows 7 | 10 |
| Using the Configuration Wizard | 11 |
| Configuration Wizard - Add Cameras | 13 |
| Configuration Wizard - Remove Cameras | 18 |

Terms and conditions

This End-user License Agreement is a legally binding agreement between you (either an individual or a single entity) and our company for the software product, which may include associated software components, media, printed materials, and online or electronic documentation.

By installing, copying, or otherwise using the product covered by this EULA, you agree to be bound by the terms of this EULA. If you do not agree to the terms of this EULA, do not install

or use the product, instead you may return it, within 30 days, along with all associated material to your place of purchase for a full refund. The product is protected by copyright laws and international copyright treaties, as well as other intellectual property laws and treaties. Note that the product is licensed to you, not sold. The license you have been granted is identified by the Software License Code on the License Certificate.

*** Installation and Use ***

The company hereby grants you the right to install and use the software product with the following restrictions:

1. The product may be installed on as many computers that meet the hardware and software requirements.
2. The product may only be used on computers running operating systems for which the product was designed.
3. You can and may only use the product in connection with video hardware equipment for which you have rightfully obtained the corresponding Device License Keys from our authorized dealer or from our company's web site

*** Copyright ***

All titles, including but not limited to copyrights, in and to the software product and any copies thereof are owned by our company. All rights not expressly granted are reserved by our company.

*** No Warranties ***

The company expressly disclaims any warranty for the product. The software product and any related documentation is provided as is without warranty of any kind, either express or implied, including, without limitation, the implied warranties or merchantability, fitness for a particular purpose, or non-infringement.

Terms and conditions

The entire risk arising out of use or performance of the software product remains with you as the user. You are notified that the product, when used with certain equipment or other software, may enable you to perform surveillance actions and data processing which are likely to be restricted by or contrary to applicable law, including without limitation data privacy and criminal law. The sole responsibility for verification of your use against compliance with applicable law lies with you as the user.

*** Limitation of Liability ***

The provisions of this paragraph are in effect to the maximum extent permitted by applicable law. In no event shall Seenergy or its suppliers be liable for any special, incidental, indirect, or consequential damages whatsoever (including, without limitation, damages for loss of business profits, business interruption, loss of business information, or any other pecuniary loss) arising out of the use of or inability to use the software product or the provision of or failure to provide proper support, even if our company has been advised of the possibility of such damages. Absent any willful misconduct or gross negligence, Seenergy's entire liability under any provision of this agreement shall be limited to the amount actually paid by you for the product.

*** Miscellaneous ***

- (a) You may make as many copies of the software product as may be necessary for backup and archival purposes.
- (b) You may distribute copies of the software product to third parties.
- (c) You may not reverse engineer, decompile, or disassemble any of the software product's components except to the extent permitted by applicable law which cannot be contractually waived.
- (d) You may permanently transfer all of your rights for this product, provided the recipient agrees to the terms of this agreement.

*** Termination ***

Without prejudice to any other rights, our company may terminate this license agreement if you fail to comply with its terms and conditions. In such event you must destroy all copies of the software product.

*** Governing Law ***

These License Terms and the contract between you and our company are governed by Taiwanese law and the sole and proper forum for the settlement of disputes hereunder shall be the Taiwan Shihlin District Court.

System Requirements

Minimum System Requirements

Hardware requirement:

- CPU: Intel Core 2 Duo or above
- RAM: Minimum 1 GB, 2GB or above is recommended
- HDD: SATA 200GB or above is recommended
- Display card: Independent display card suggested
 - **Make sure your display dPi setting is set to default at 96dPi**
 - **To set dPi value, right-click on desktop, choose "Settings" tab >> "Advanced" >> "general"**
- Ethernet interface: 10/100Mb Ethernet card or above

Software requirement:

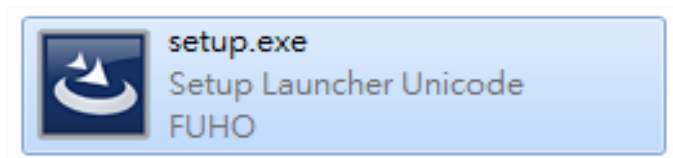
- OS: Windows 2000(SP4), Windows XP, Windows 2003, Windows Vista, and Windows 7

Installation CD Contents

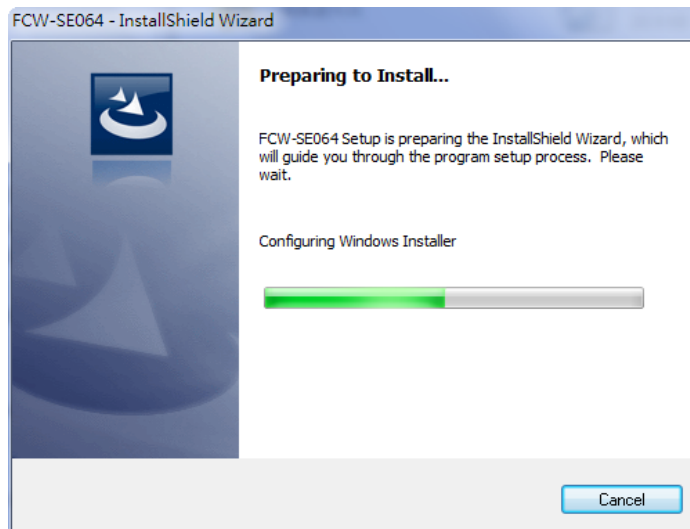
- Installation File
- Quick Installation Guide
- User's Manual
- Datasheet

Installation

1. Double-click on the setup executable file to initiate the installation:

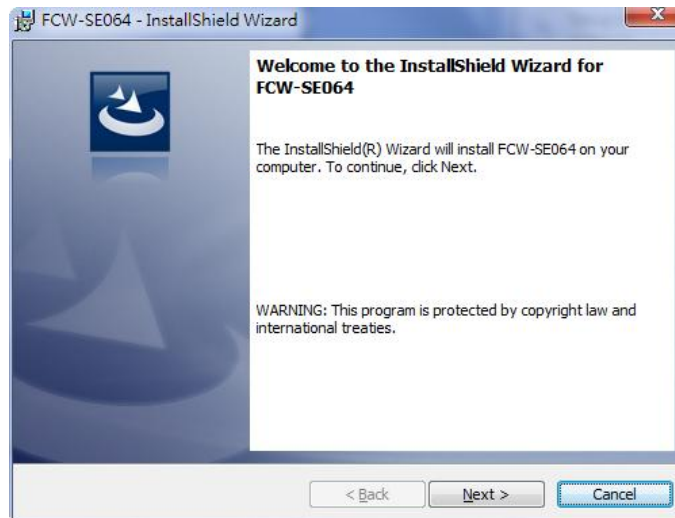


2. The setup wizard will be initialized and preparing to install:

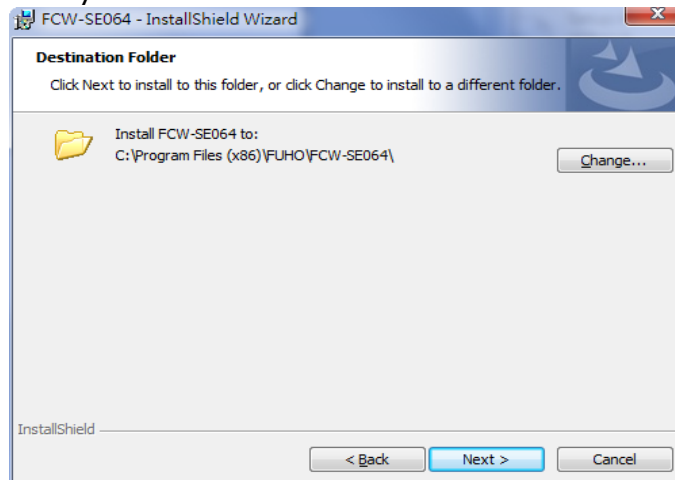


Installation

3. Click "Next" to start:

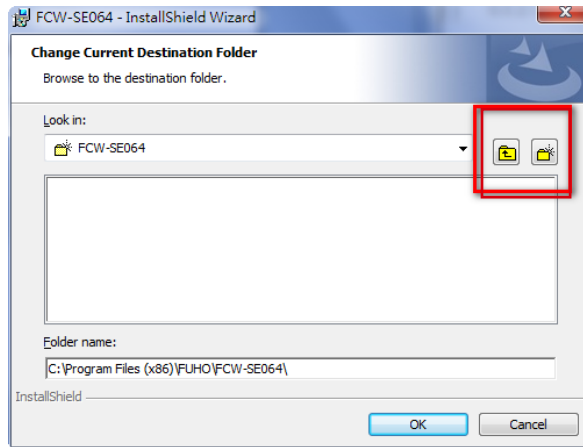


4. Click "Next" to continue, or click "Change" if you wish change the installation directory:

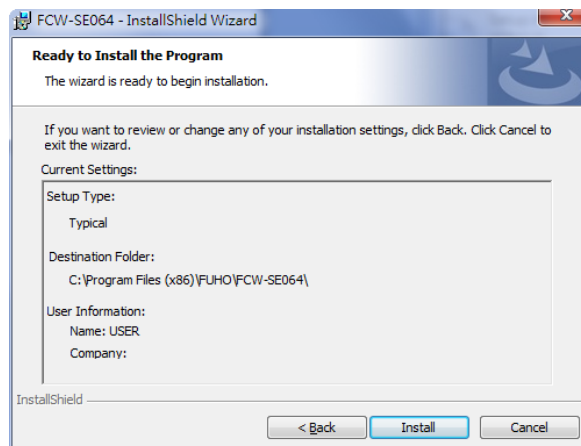


Installation

5. Enter a new valid path in the "Folder name" field for new installation directory, or click the icons highlighted below to switch to a desired directory and create a new folder if desire. Afterwards, click "OK" to continue:

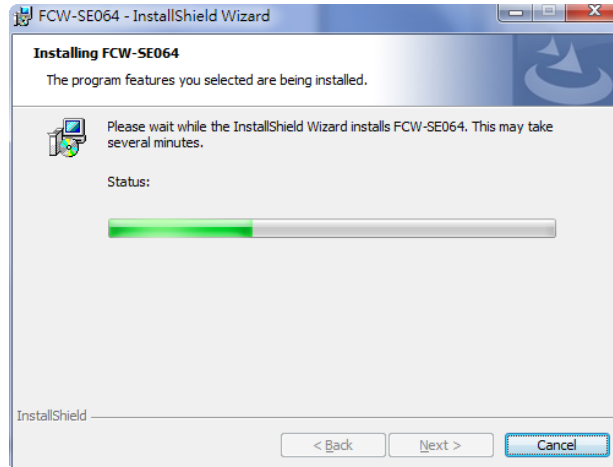


6. Click "Install" to start the installation, or click "Back" to go back and make fur-ther changes:

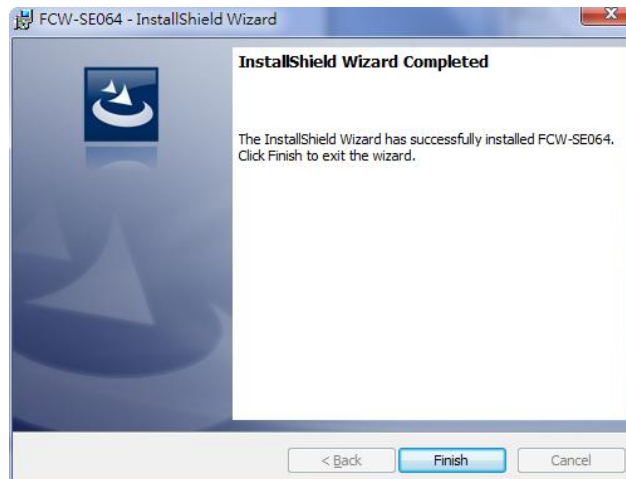


Installation

7. The installation process should be displayed:



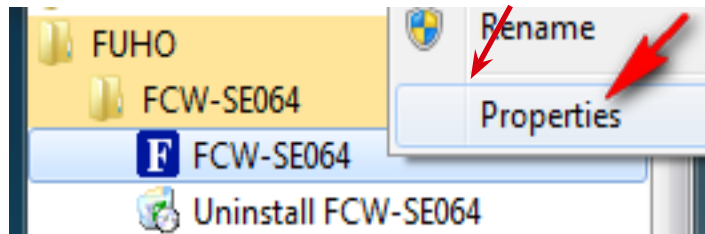
8. Simply click "Finish" to exit the setup wizard when installation finishes:



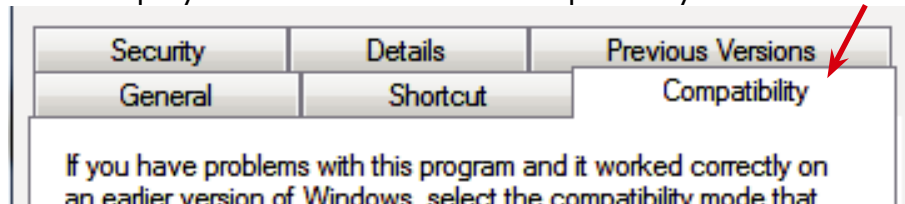
Running the software in Windows Vista or Windows 7

Due to the UAC (User Access Control) function in Windows Vista or Windows 7, the software would need to be run under the "Administrator" privilege. To run the Config Wizard or the main program with the "Administrator" privilege every-time you start the program, follow the instruction below:

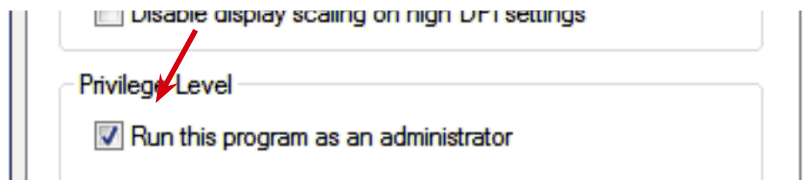
1. Go to "Start" >> "All Programs" >> "FUHO." >> "FCW-SE064", right-click either the config program or the main program and click on the "Properties" option:



A dialog will be displayed and click on the "Compatibility" tab:



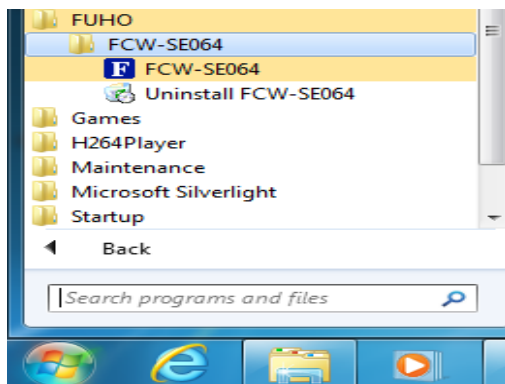
Check the "Run this program as an administrator". Do the same to the FCW-SE064 main program:



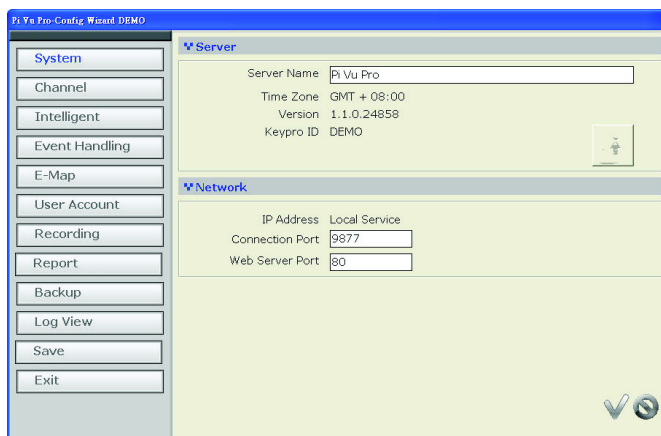
Using the Configuration Wizard

The software comes with two application, the “config” program, and the “main program”. The software needs to be configured with the config program before using the main program. Configurations such as adding new cameras, configuring e-map, or event notification are all done in the config program.

To access the config program or the main program, Click “Start” (or the Windows icon in Windows Vista or 7) >> “All Programs” >> “FUHO” >> “FCW-SE064”:



Upon the start of the configuration wizard, the “System” page should be displayed:



Using the Configuration Wizard

Server Name

Time Zone

Version

Keypro ID

Drop-down menu for multi-language
Time zone setting of the PC
Software Version

IP Address

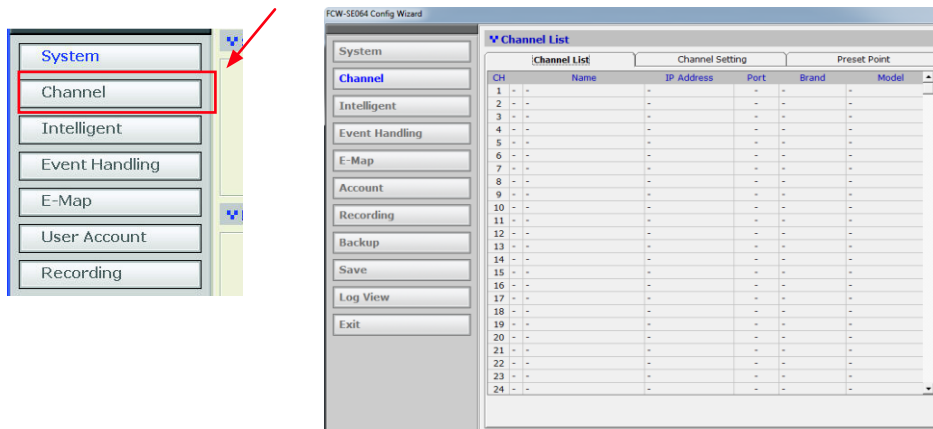
Connection Port

Web Server Port

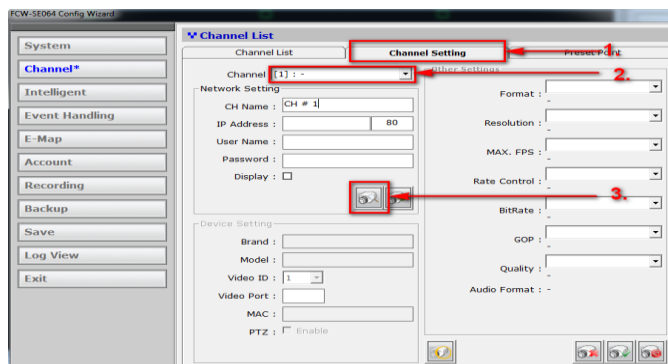
IP address of the PC
Connection port for video streaming
Port number used by the software's web server

Configuration Wizard -Adding cameras

To add cameras using the configuration wizard, go to "Channel" from the menu on the left. The "Channel List" page should display which is an overview page that displays a list of cameras currently added to the software.



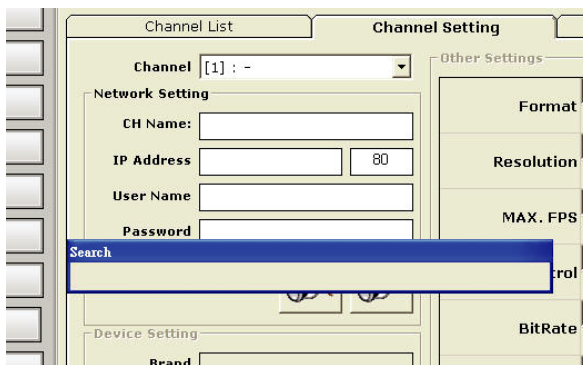
To add a new camera, click on the "Channel Setting" tab and select an available channel from the "Channel" drop-down menu, and then click on "Search" to begin:



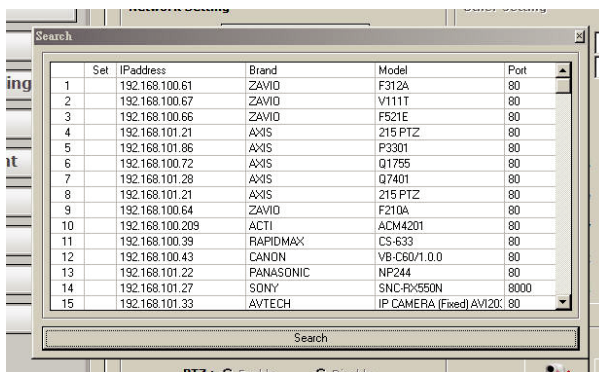
** The "Search" function only works when the cameras are installed in the same subnet as the PC in which the NVR software is installed*

Configuration Wizard - Adding cameras

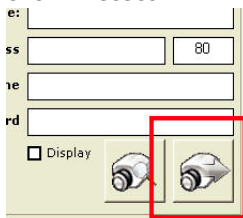
The NVR software will perform a search and locate the cameras available within the same subnet:



A new dialog should be prompted and displays a list of available cameras:



** For cameras located in different subnet (but within the same local network), enter its private IP, HTTP port, user- name and password manually and click "Detect".*



Configuration Wizard - Adding cameras

Double-click on a camera from the list and it should direct you back to the "Channel Setting" page. The camera's IP address and HTTP port should be automatically filled in the "Network Setting" section:

Channel [1] : -



Network Setting

CH Name:

IP Address

User Name

Password

☐ Display  

Fill in the camera's username and password (must be the root privilege account) in the corresponding fields shown below and click "Detect":

Channel [1] : -



Network Setting

CH Name: **1**

IP Address

User Name **2**

Password **2**

☐ Display   **3**

Configuration Wizard - Adding cameras

Upon a successful detection, the camera's information and its current settings should be detected: (as shown below)

The settings shown in the "Other Setting" section can be changed by using either the available drop-down menu or by clicking the corresponding cell box:

Use the drop-down to make changes

Clear settings and exit this page

Click to confirm adding the camera

Removing an existing camera

Configuration Wizard - Adding cameras

Click the "Add Camera" button to confirm the settings and you should be directed back to the "Channel List" page:

Confirm adding camera

You can click the "Cancel" button to cancel the configuration and you should be directed back to the "Channel List" page:

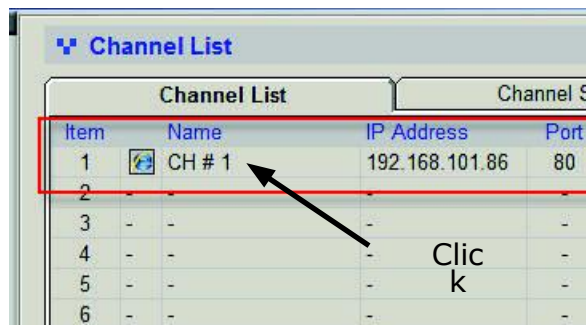
Cancel adding camera

You should now see a list of cameras you've been added to the software from the "Channel List" page:

| Channel List | | | | | | |
|--------------|--------|----------------|-----------------|-------|-------------|-----------------|
| Channel List | | | Channel Setting | | PTZ Setting | |
| Item | Name | IP Address | Port | Brand | Model | MAC Address |
| 1 | CH # 1 | 192.168.101.86 | 80 | | P3301 | 00:40:8C:93:FC: |
| 2 | - | - | - | - | - | - |
| 3 | - | - | - | - | - | - |
| 4 | - | - | - | - | - | - |
| 5 | - | - | - | - | - | - |
| 6 | - | - | - | - | - | - |

Configuration Wizard - Remove cameras

To remove a camera, simply click on a camera from the list under the "Channel List" page, it should direct you to the "Channel Setting" page:



and all settings of the camera you just clicked on will be displayed. Click on the "Remove camera" button to remove the camera:

